

# Converting Colors

Android(4287128910)

Have a look what the booklet for  
Android(4287128910) contains.

<b>Android(4287128910)</b> .....	3
<b><i>Conversions</i></b> .....	4
<b><i>Details</i></b> .....	6
<b><i>Harmonies</i></b> .....	11
<b><i>Previews</i></b> .....	23
<b><i>Color Blindness Simulation</i></b> .....	26
<b><i>CSS Examples</i></b> .....	29

# Color

**Android(4287128910)**

# Conversions

## Conversions Part 1

<b>Format</b>	<b>Color</b>
Hex	88654E
RGB	136, 101, 78
RGB Percent	53%, 40%, 31%
CMY	0.4667, 0.6039, 0.6941
CMYK	0.00, 0.26, 0.43, 0.47
HSL	24°, 27%, 42%
HSV	24°, 43%, 53%
XYZ	16.1822, 15.0917, 9.2678
YIQ	108.8430, 28.2430, 0.2670

# Conversions

## Conversions Part 2

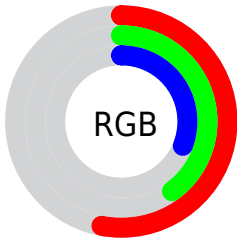
<b>Format</b>	<b>Color</b>
<b>R<sub>YB</sub></b>	136, 116, 78
Decimal	8938830
CIE <sub>Lab</sub>	45.76, 10.92, 18.50
CIE <sub>LCh</sub>	46, 21.485, 59.463
Yxy	15.0917, 0.3991, 0.3723
Android (android.graphics.Color)	4287128910 (0xFF88654E)
YUV	108.8430, -15.2056, 23.8167
Hunter-Lab	38.8480, 6.3704, 13.0490

# Details

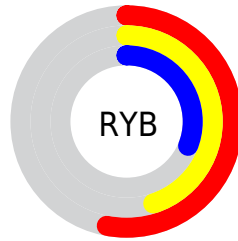
The Android color `4287128910` is a dark color, and the websafe version is hex `996666`, and the color name is `dark brown-tangelo`. A complement of this color would be `4283330952`, and the grayscale version is `4285361517`.

A 20% lighter version of the original color is `4290746495`, and `4283708961` is the 20% darker color. If you saturate the color by 10%, you get `4287126848`, and if you desaturate by 10%, it is `4287130972`.

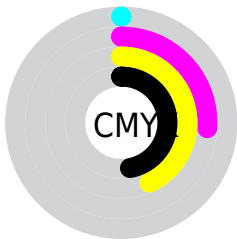
# Distribution



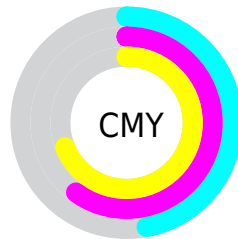
- Red (53%)
- Green (40%)
- Blue (31%)



- Red (53%)
- Yellow (45%)
- Blue (31%)



- Cyan (0%)
- Magenta (26%)
- Yellow (43%)
- Black (47%)



- Cyan (47%)
- Magenta (60%)
- Yellow (69%)

# Brightness & Saturation Gradients

These gradients show how the Android color 4287128910 changes by changing the brightness by 10 percent. The first figure shows a shift by +10% for each color and the second figure -10%.

Similar to the brightness gradients but the following saturation gradients show a change of the Android color 4287128910 by changing the saturation by 10% instead.





4287128910



4287128910

4294967295



4285418807



4290746495



4283708961



4292588441



4282130700



4294495924



4280617728



4294961872



4278190080



4294967276



4287128910



4287128910



4287126848



4287130972



4287124787



4287133033

■ 4287122469

■ 4287135351

■ 4287120408

■ 4287137412

■ 4287118346

■ 4287139474

■ 4287116800

■ 4287141536

■ 4287143597

■ 4287145915

■ 4287147976

# Harmonies

## Analogous

The Analogous color harmony consists of three colors that are next to each other on the color wheel.



4287651932



4287128910



4286147400

# Triad

The Triadic color harmony groups three colors that are evenly spaced from another and form a triangle on the color wheel.



4287128910



4282283627



4285425804

# Complementary

The Complementary color scheme is a pair of colors which are on the opposite of each other on the color wheel.



4287128910



4283330952

# Split Complementary

Split-complementary colors differ from the complementary color scheme. The scheme consists of three colors, the original color and two neighbors of the complement color.



4283723408



4287128910



4281562749

# Square

The Square scheme is like the rectangle color scheme, but the four colors are evenly spaced on the color wheel.



4287128910



4283528282



4282151819



4286800511

# Rectangle

The Rectangle color scheme consists of four colors that form a rectangle on the color wheel.



4287128910



4285361994



4282151819



4284902030



# Sweetspot

The Sweet Spot groups the original color and five complimentary colors.



4287128910



4289766041



4287123058



4284043595



4292467161



4284045657



# Same Dimension

The Same Dimension uses a secret algorithm to generate beautiful new colors.



4287128910



4289755734



4287136078



4282728766



4286919936



4278518272



# Inverse Universe

The Inverse Universe completely reimagines the original color for something new.



4283330952



4283862192



4283323784



4282270277



4278210693

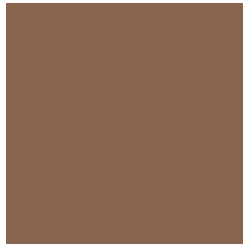


4278190853



# Previews

## White Background



This preview shows how the Android color 4287128910 looks on a white background.

## Color Contrast Check

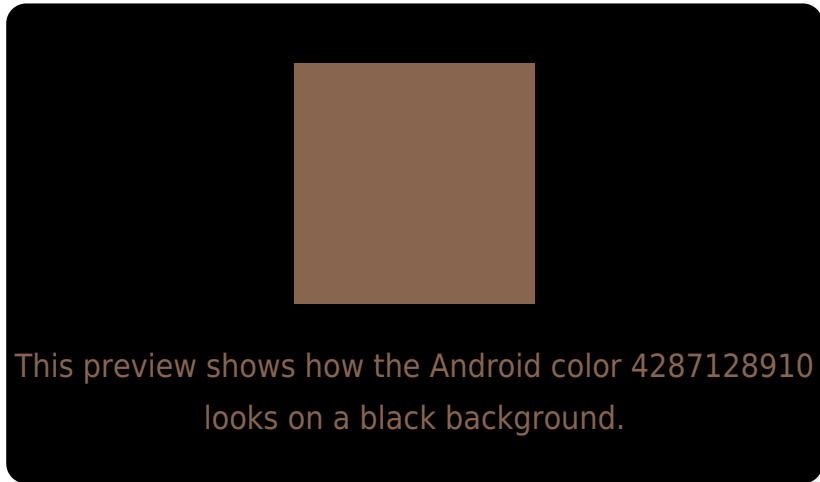
Large Text (above 18pt) WCAG AA ✓ Pass

Any Text WCAG AA ✓ Pass

Large Text (above 18pt) WCAG AAA ✓ Pass

Any Text WCAG AAA × Fail

# Black Background



## Color Contrast Check

Large Text (above 18pt) WCAG AA ✓ Pass

Any Text WCAG AA × Fail

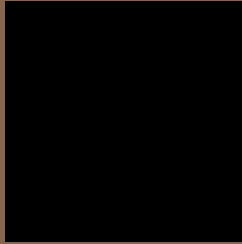
Large Text (above 18pt) WCAG AAA × Fail

Any Text WCAG AAA × Fail

If you want to check with other color combinations, try the [Color Contrast Checker](#).



# Android 4287128910 Background



This preview shows how black text looks on a background with the Android color 4287128910.



This preview shows how white text looks on a background with the Android color 4287128910.

# Color Blindness Simulation

Color vision deficiency is a very complex topic, and I could not describe the different causes any better than Wikipedia does, so if you want to learn more, you should check out their [article about color blindness](#).

## Dichromacy



**Original Color**

4287128910

**Protanopia**

4285819985

**Deuteranopia**

4286670925



**Tritanopia**  
4287324521

# Trichromacy



**Original Color**  
4287128910

**Protanomaly**  
4286277968

**Deuteranomaly**  
4286867277

**Tritanomaly**  
4287259231

# Monochromacy



**Original Color**  
4287128910

**Achromatopsia**  
4285361517

**Achromatomaly**  
4286016098

# CSS Examples

## Text

The CSS property to change the color of the text to Android 4287128910 is called "color". The color property can be set on classes, ids or directly on the HTML element.

This example shows how text in the color `rgb(136, 101, 78)` looks like.

```
.text, #text, p{  
    color:rgb(136, 101, 78)  
}
```

If you want to add a text shadow in that color use the text-shadow property, you can generate a text shadow directly with our [CSS Text Shadow Generator](#).

Here you see how black text with a 4 pixel rgb(136, 101, 78) colored shadow looks like.

```
.shadow{ text-shadow: 4px 4px 2px rgb(136, 101, 78) }
```

## Border

The CSS property to change the border of an element to Android 4287128910 is called "border". The border property can be set on classes, ids or directly on the HTML element.

This example shows the color as border, it can be applied via the CSS property "border" or "border-color".

```
.border, #border, table{ border:4px solid rgb(136, 101, 78) }
```

If only the border color should be changed use the property `border-color`.

```
.border{ border-color:rgb(136, 101, 78) }
```

If you want to add a box shadow in that color use:

Here you see how a box with a 4 pixel `rgb(136, 101, 78)` colored shadow looks like.

```
.boxshadow{ -moz-box-shadow:4px 4px 4px  
4px rgb(136, 101, 78); -webkit-box-  
shadow:4px 4px 4px 4px rgb(136, 101, 78);  
box-shadow:4px 4px 4px 4px rgb(136, 101,  
78) }
```

# Background

The CSS property to change the background color of an element to Android 4287128910 is called "background". The background property can be set on classes, ids or directly on the HTML element.

```
.background, #background, body{  
background: rgb(136, 101, 78) }
```

If only the background color should be changed can be used:

```
.background{ background-color: rgb(136,  
101, 78) }
```

This example shows the color as background, it is applied via the CSS property "background".

To optimize and compress your CSS code, you can use our [online CSS compressor and optimizer](#) based on csstidy. If you want to create a linear or radial gradient as background or border, check our [CSS Gradient Generator](#).



Hey! You found this booklet interesting? Support Converting Colors with the new Membership Option!

The pro membership hides all ads, plus gives you double the colors in the color bucket, and more awesome pro features!

**[Learn more, Memberships starting at \\$2.50/m!](#)**

**Follow me  
on Twitter!**

@ConvertingColor