

Converting Colors

Android(4287328864)

Have a look what the booklet for
Android(4287328864) contains.

Android(4287328864)	3
<i>Conversions</i>	4
<i>Details</i>	6
<i>Harmonies</i>	11
<i>Previews</i>	23
<i>Color Blindness Simulation</i>	26
<i>CSS Examples</i>	29

Color

Android(4287328864)

Conversions

Conversions Part 1

Format	Color
Hex	8B7260
RGB	139, 114, 96
RGB Percent	55%, 45%, 38%
CMY	0.4549, 0.5529, 0.6235
CMYK	0.00, 0.18, 0.31, 0.45
HSL	25°, 18%, 46%
HSV	25°, 31%, 55%
XYZ	18.7761, 18.3681, 13.6221
YIQ	119.4230, 20.6780, -0.2980

Conversions

Conversions Part 2

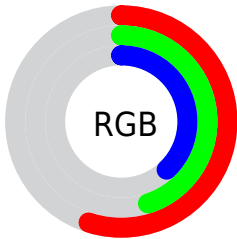
Format	Color
R_{YB}	139, 127, 96
Decimal	9138784
CIE _{Lab}	49.94, 6.98, 13.66
CIE _{LCh}	50, 15.339, 62.940
Yxy	18.3681, 0.3699, 0.3618
Android (android.graphics.Color)	4287328864 (0xFF8B7260)
YUV	119.4230, -11.5475, 17.1690
Hunter-Lab	42.8580, 3.1992, 11.1557

Details

The Android color `4287328864` is a dark color, and the websafe version is hex `996666`. A complement of this color would be `4284512651`, and the grayscale version is `4286085240`.

A 20% lighter version of the original color is `4290881171`, and `4283974194` is the 20% darker color. If you saturate the color by 10%, you get `4287326802`, and if you desaturate by 10%, it is `4287330926`.

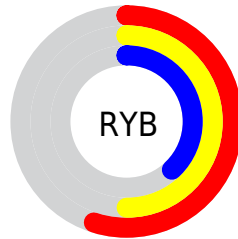
Distribution



Red (55%)

Green (45%)

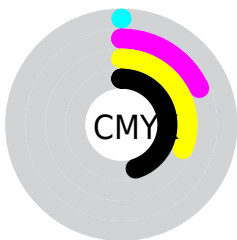
Blue (38%)



Red (55%)

Yellow (50%)

Blue (38%)

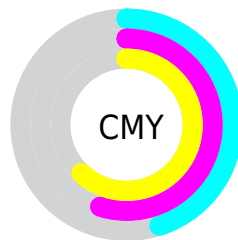


Cyan (0%)

Magenta (18%)

Yellow (31%)

Black (45%)



Cyan (45%)

Magenta (55%)

Yellow (62%)

Brightness & Saturation Gradients

These gradients show how the Android color 4287328864 changes by changing the brightness by 10 percent. The first figure shows a shift by +10% for each color and the second figure -10%.

Similar to the brightness gradients but the following saturation gradients show a change of the Android color 4287328864 by changing the saturation by 10% instead.

 4287328864

 4287328864

4294967295

 4285618504

 4290881171

 4283974194

 4292723117

 4282395676

 4294630857

 4280948483

 4294965733

 4279238656

 4278190080

 4287328864

 4287328864

 4287326802

 4287330926

 4287324740

 4287332988

■ 4287322678

■ 4287335050

■ 4287320616

■ 4287337112

■ 4287318554

■ 4287339174

■ 4287316493

■ 4287341235

■ 4287314432

■ 4287343553

■ 4287345615

■ 4287347677

Harmonies

Analogous

The Analogous color harmony consists of three colors that are next to each other on the color wheel.



4287721321



4287328864



4286608989

Triad

The Triadic color harmony groups three colors that are evenly spaced from another and form a triangle on the color wheel.



4287328864



4283924088



4286280589

Complementary

The Complementary color scheme is a pair of colors which are on the opposite of each other on the color wheel.



4287328864



4284512651

Split Complementary

Split-complementary colors differ from the complementary color scheme. The scheme consists of three colors, the original color and two neighbors of the complement color.



4285101969



4287328864



4283661956

Square

The Square scheme is like the rectangle color scheme, but the four colors are evenly spaced on the color wheel.



4287328864



4284644715



4284119950



4287197059

Rectangle

The Rectangle color scheme consists of four colors that form a rectangle on the color wheel.



4287328864



4285954399



4284119950



4285887887

Sweetspot

The Sweet Spot groups the original color and five complimentary colors.



4287328864



4290096293



4287324281



4284241490



4292598747



4284243036

Same Dimension

The Same Dimension uses a secret algorithm to generate beautiful new colors.



4287328864



4290088562



4287334240



4282728766



4286920704



4278518272

Inverse Universe

The Inverse Universe completely reimagines the original color for something new.



4284512651



4285700533



4284507275



4282270277



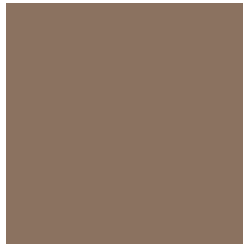
4278209925



4278190853

Previews

White Background



This preview shows how the Android color 4287328864 looks on a white background.

Color Contrast Check

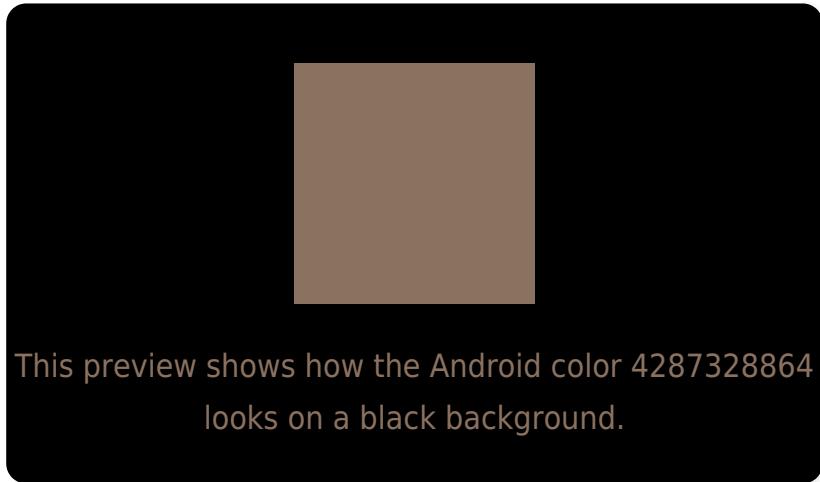
Large Text (above 18pt) WCAG AA ✓ Pass

Any Text WCAG AA ✗ Fail

Large Text (above 18pt) WCAG AAA ✗ Fail

Any Text WCAG AAA ✗ Fail

Black Background



Color Contrast Check

Large Text (above 18pt) WCAG AA ✓ Pass

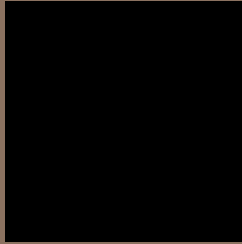
Any Text WCAG AA ✓ Pass

Large Text (above 18pt) WCAG AAA ✓ Pass

Any Text WCAG AAA × Fail

If you want to check with other color combinations, try the [Color Contrast Checker](#).

Android 4287328864 Background



This preview shows how black text looks on a background with the Android color 4287328864.



This preview shows how white text looks on a background with the Android color 4287328864.

Color Blindness Simulation

Color vision deficiency is a very complex topic, and I could not describe the different causes any better than Wikipedia does, so if you want to learn more, you should check out their [article about color blindness](#).

Dichromacy



Original Color
4287328864

Protanopia
4286478178

Deuteranopia
4287263328

Trichromacy



Original Color
4287328864

Protanomaly
4286805345

Deuteranomaly
4287263328

Tritanomaly
4287459439

Monochromacy



Original Color
4287328864

Achromatopsia
4286019447

Achromatomaly
4286477679

CSS Examples

Text

The CSS property to change the color of the text to Android 4287328864 is called "color". The color property can be set on classes, ids or directly on the HTML element.

This example shows how text in the color `rgb(139, 114, 96)` looks like.

```
.text, #text, p{  
    color:rgb(139, 114, 96)  
}
```

If you want to add a text shadow in that color use the text-shadow property, you can generate a text shadow directly with our [CSS Text Shadow Generator](#).

Here you see how black text with a 4 pixel rgb(139, 114, 96) colored shadow looks like.

```
.shadow{ text-shadow: 4px 4px 2px rgb(139, 114, 96) }
```

Border

The CSS property to change the border of an element to Android 4287328864 is called "border". The border property can be set on classes, ids or directly on the HTML element.

This example shows the color as border, it can be applied via the CSS property "border" or "border-color".

```
.border, #border, table{ border:4px solid rgb(139, 114, 96) }
```

If only the border color should be changed use the property `border-color`.

```
.border{ border-color:rgb(139, 114, 96) }
```

If you want to add a box shadow in that color use:

Here you see how a box with a 4 pixel `rgb(139, 114, 96)` colored shadow looks like.

```
.boxshadow{ -moz-box-shadow:4px 4px 4px  
4px rgb(139, 114, 96); -webkit-box-  
shadow:4px 4px 4px 4px rgb(139, 114, 96);  
box-shadow:4px 4px 4px 4px rgb(139, 114,  
96) }
```

Background

The CSS property to change the background color of an element to Android 4287328864 is called "background". The background property can be set on classes, ids or directly on the HTML element.

```
.background, #background, body{  
background: rgb(139, 114, 96) }
```

If only the background color should be changed can be used:

```
.background{ background-color: rgb(139,  
114, 96) }
```

This example shows the color as background, it is applied via the CSS property "background".

To optimize and compress your CSS code, you can use our [online CSS compressor and optimizer](#) based on csstidy. If you want to create a linear or radial gradient as background or border, check our [CSS Gradient Generator](#).

Hey! You found this booklet interesting? Support Converting Colors with the new Membership Option!

The pro membership hides all ads, plus gives you double the colors in the color bucket, and more awesome pro features!

[Learn more, Memberships starting at \\$2.50/m!](#)

**Follow me
on Twitter!**

@ConvertingColor