

Converting Colors

Android(4287392596)

Have a look what the booklet for
Android(4287392596) contains.

Android(4287392596)	3
<i>Conversions</i>	4
<i>Details</i>	6
<i>Harmonies</i>	11
<i>Previews</i>	23
<i>Color Blindness Simulation</i>	26
<i>CSS Examples</i>	29

Color

Android(4287392596)

Conversions

Conversions Part 1

Format	Color
Hex	8C6B54
RGB	140, 107, 84
RGB Percent	55%, 42%, 33%
CMY	0.4510, 0.5804, 0.6706
CMYK	0.00, 0.24, 0.40, 0.45
HSL	25°, 25%, 44%
HSV	25°, 40%, 55%
XYZ	17.6731, 16.7309, 10.6854
YIQ	114.2450, 27.0510, -0.1570

Conversions

Conversions Part 2

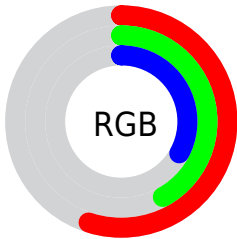
Format	Color
R_{YB}	140, 123, 84
Decimal	9202516
CIE _{Lab}	47.92, 9.87, 17.95
CIE _{LCh}	48, 20.488, 61.202
Yxy	16.7309, 0.3920, 0.3711
Android (android.graphics.Color)	4287392596 (0xFF8C6B54)
YUV	114.2450, -14.9108, 22.5871
Hunter-Lab	40.9035, 5.5434, 13.1438

Details

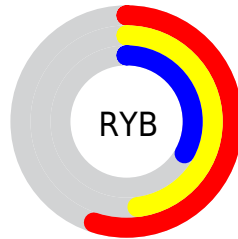
The Android color **4287392596** is a dark color, and the websafe version is hex **996666**. A complement of this color would be **4283725196**, and the grayscale version is **4285690482**.

A 20% lighter version of the original color is **4291010182**, and **4283972647** is the 20% darker color. If you saturate the color by 10%, you get **4287390534**, and if you desaturate by 10%, it is **4287394658**.

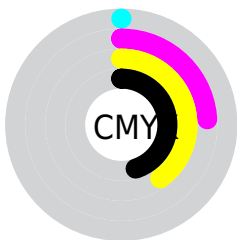
Distribution



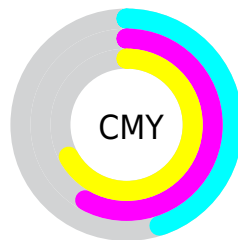
- Red (55%)
- Green (42%)
- Blue (33%)



- Red (55%)
- Yellow (48%)
- Blue (33%)



- Cyan (0%)
- Magenta (24%)
- Yellow (40%)
- Black (45%)



- Cyan (45%)
- Magenta (58%)
- Yellow (67%)

Brightness & Saturation Gradients

These gradients show how the Android color 4287392596 changes by changing the brightness by 10 percent. The first figure shows a shift by +10% for each color and the second figure -10%.

Similar to the brightness gradients but the following saturation gradients show a change of the Android color 4287392596 by changing the saturation by 10% instead.



4287392596



4287392596

4294967295



4285682493



4291010182



4283972647



4292852128



4282394130



4294759867



4280881408



4294963671



4278321152



4294967283



4278190080



4287392596



4287392596



4287390534



4287394658



4287388472



4287396976

■ 4287386154

■ 4287399038

■ 4287384092

■ 4287401100

■ 4287382030

■ 4287403162

■ 4287379968

■ 4287405480

■ 4287407542

■ 4287409604

■ 4287411666

Harmonies

Analogous

The Analogous color harmony consists of three colors that are next to each other on the color wheel.



4287915617



4287392596



4286411087

Triad

The Triadic color harmony groups three colors that are evenly spaced from another and form a triangle on the color wheel.



4287392596



4282743666



4285885839

Complementary

The Complementary color scheme is a pair of colors which are on the opposite of each other on the color wheel.



4287392596



4283725196

Split Complementary

Split-complementary colors differ from the complementary color scheme. The scheme consists of three colors, the original color and two neighbors of the complement color.



4284314516



4287392596



4282219395

Square

The Square scheme is like the rectangle color scheme, but the four colors are evenly spaced on the color wheel.



4287392596



4283923041



4282808463



4287129731

Rectangle

The Rectangle color scheme consists of four colors that form a rectangle on the color wheel.



4287392596



4285625425



4282808463



4285362066

Sweetspot

The Sweet Spot groups the original color and five complimentary colors.



4287392596



4290095263



4287386742



4284240975



4292598747



4284243036

Same Dimension

The Same Dimension uses a secret algorithm to generate beautiful new colors.



4287392596



4290085470



4287399508



4282728766



4286920192



4278518272

Inverse Universe

The Inverse Universe completely reimagines the original color for something new.



4283725196



4284387765



4283718284



4282270277



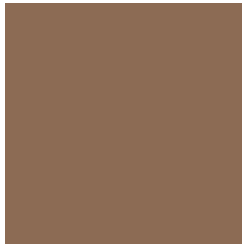
4278210181



4278190853

Previews

White Background



This preview shows how the Android color 4287392596 looks on a white background.

Color Contrast Check

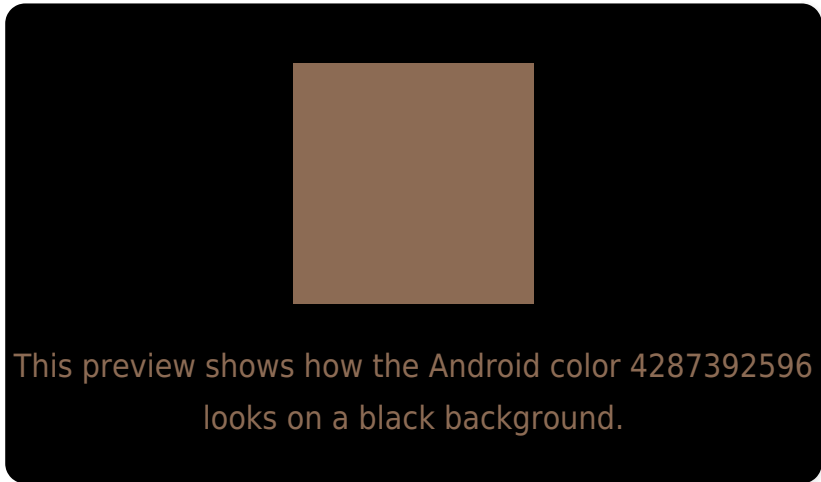
Large Text (above 18pt) WCAG AA ✓ Pass

Any Text WCAG AA ✓ Pass

Large Text (above 18pt) WCAG AAA ✓ Pass

Any Text WCAG AAA × Fail

Black Background



Color Contrast Check

Large Text (above 18pt) WCAG AA ✓ Pass

Any Text WCAG AA × Fail

Large Text (above 18pt) WCAG AAA × Fail

Any Text WCAG AAA × Fail

If you want to check with other color combinations, try the [Color Contrast Checker](#).

Android 4287392596 Background



This preview shows how black text looks on a background with the Android color 4287392596.



This preview shows how white text looks on a background with the Android color 4287392596.

Color Blindness Simulation

Color vision deficiency is a very complex topic, and I could not describe the different causes any better than Wikipedia does, so if you want to learn more, you should check out their [article about color blindness](#).

Dichromacy



Original Color

4287392596

Protanopia

4286214743

Deuteranopia

4287065428

Trichromacy



Original Color
4287392596

Protanomaly
4286672726

Deuteranomaly
4287196244

Tritanomaly
4287522917

Monochromacy



Original Color
4287392596

Achromatopsia
4285690482

Achromatomaly
4286279527

CSS Examples

Text

The CSS property to change the color of the text to Android 4287392596 is called "color". The color property can be set on classes, ids or directly on the HTML element.

This example shows how text in the color `rgb(140, 107, 84)` looks like.

```
.text, #text, p{  
    color:rgb(140, 107, 84)  
}
```

If you want to add a text shadow in that color use the text-shadow property, you can generate a text shadow directly with our [CSS Text Shadow Generator](#).

Here you see how black text with a 4 pixel rgb(140, 107, 84) colored shadow looks like.

```
.shadow{ text-shadow: 4px 4px 2px rgb(140, 107, 84) }
```

Border

The CSS property to change the border of an element to Android 4287392596 is called "border". The border property can be set on classes, ids or directly on the HTML element.

This example shows the color as border, it can be applied via the CSS property "border" or "border-color".

```
.border, #border, table{ border:4px solid rgb(140, 107, 84) }
```

If only the border color should be changed use the property `border-color`.

```
.border{ border-color:rgb(140, 107, 84) }
```

If you want to add a box shadow in that color use:

Here you see how a box with a 4 pixel `rgb(140, 107, 84)` colored shadow looks like.

```
.boxshadow{ -moz-box-shadow:4px 4px 4px  
4px rgb(140, 107, 84); -webkit-box-  
shadow:4px 4px 4px 4px rgb(140, 107, 84);  
box-shadow:4px 4px 4px 4px rgb(140, 107,  
84) }
```

Background

The CSS property to change the background color of an element to Android 4287392596 is called "background". The background property can be set on classes, ids or directly on the HTML element.

```
.background, #background, body{  
background: rgb(140, 107, 84) }
```

If only the background color should be changed can be used:

```
.background{ background-color: rgb(140,  
107, 84) }
```

This example shows the color as background, it is applied via the CSS property "background".

To optimize and compress your CSS code, you can use our [online CSS compressor and optimizer](#) based on csstidy. If you want to create a linear or radial gradient as background or border, check our [CSS Gradient Generator](#).

Hey! You found this booklet interesting? Support Converting Colors with the new Membership Option!

The pro membership hides all ads, plus gives you double the colors in the color bucket, and more awesome pro features!

[Learn more, Memberships starting at \\$2.50/m!](#)

**Follow me
on Twitter!**

@ConvertingColor