

# Converting Colors

Android(4287523154)

Have a look what the booklet for  
Android(4287523154) contains.

<b>Android(4287523154)</b> .....	3
<b><i>Conversions</i></b> .....	4
<b><i>Details</i></b> .....	6
<b><i>Harmonies</i></b> .....	11
<b><i>Previews</i></b> .....	23
<b><i>Color Blindness Simulation</i></b> .....	26
<b><i>CSS Examples</i></b> .....	29

# Color

**Android(4287523154)**

# Conversions

## Conversions Part 1

<b>Format</b>	<b>Color</b>
Hex	8E6952
RGB	142, 105, 82
RGB Percent	56%, 41%, 32%
CMY	0.4431, 0.5882, 0.6784
CMYK	0.00, 0.26, 0.42, 0.44
HSL	23°, 27%, 44%
HSV	23°, 42%, 56%
XYZ	17.7299, 16.4631, 10.2259
YIQ	113.4410, 29.4350, 0.6910

# Conversions

## Conversions Part 2

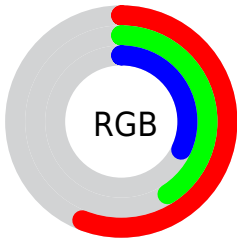
<b>Format</b>	<b>Color</b>
<b>R<sub>YB</sub></b>	142, 119, 82
Decimal	9333074
CIE <sub>Lab</sub>	47.58, 11.65, 18.70
CIE <sub>LCh</sub>	48, 22.037, 58.078
Yxy	16.4631, 0.3992, 0.3706
Android (android.graphics.Color)	4287523154 (0xFF8E6952)
YUV	113.4410, -15.5004, 25.0462
Hunter-Lab	40.5748, 6.9930, 13.4598

# Details

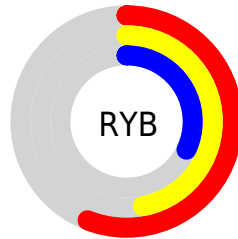
The Android color `4287523154` is a dark color, and the websafe version is hex `996666`. A complement of this color would be `4283594638`, and the grayscale version is `4285690482`.

A 20% lighter version of the original color is `4291140740`, and `4284103205` is the 20% darker color. If you saturate the color by 10%, you get `4287520836`, and if you desaturate by 10%, it is `4287525472`.

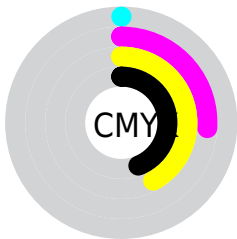
# Distribution



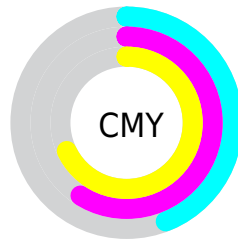
- Red (56%)
- Green (41%)
- Blue (32%)



- Red (56%)
- Yellow (47%)
- Blue (32%)



- Cyan (0%)
- Magenta (26%)
- Yellow (42%)
- Black (44%)



- Cyan (44%)
- Magenta (59%)
- Yellow (68%)

# Brightness & Saturation Gradients

These gradients show how the Android color 4287523154 changes by changing the brightness by 10 percent. The first figure shows a shift by +10% for each color and the second figure -10%.

Similar to the brightness gradients but the following saturation gradients show a change of the Android color 4287523154 by changing the saturation by 10% instead.





4287523154



4287523154

4294967295



4285813051



4291140740



4284103205



4293048222



4282459152



4294955961



4280946688



4294963156



4278386688



4294967281



4278190080



4287523154



4287523154



4287520836



4287525472



4287518518



4287527790

 4287516455

 4287529853

 4287514137

 4287532171

 4287511819

 4287534489

 4287510016

 4287536807

 4287538869

 4287541188

 4287543506

# Harmonies

## Analogous

The Analogous color harmony consists of three colors that are next to each other on the color wheel.



4288046176



4287523154



4286541644

# Triad

The Triadic color harmony groups three colors that are evenly spaced from another and form a triangle on the color wheel.



4287523154



4282547055



4285689234

# Complementary

The Complementary color scheme is a pair of colors which are on the opposite of each other on the color wheel.



4287523154



4283594638

# Split Complementary

Split-complementary colors differ from the complementary color scheme. The scheme consists of three colors, the original color and two neighbors of the complement color.



4283921302



4287523154



4281760642

# Square

The Square scheme is like the rectangle color scheme, but the four colors are evenly spaced on the color wheel.



4287523154



4283857245



4282284176



4287063685

# Rectangle

The Rectangle color scheme consists of four colors that form a rectangle on the color wheel.



4287523154



4285690701



4282284176



4285099924



# Sweetspot

The Sweet Spot groups the original color and five complimentary colors.



4287523154



4290292128



4287517303



4284240717



4292598747



4284243036



# Same Dimension

The Same Dimension uses a secret algorithm to generate beautiful new colors.



4287523154



4290281050



4287530578



4282860352



4287050752



4278715136



# Inverse Universe

The Inverse Universe completely reimagines the original color for something new.



4283594638



4284126392



4283586958



4282402119



4278211463

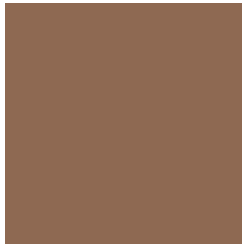


4278191368



# Previews

## White Background



This preview shows how the Android color 4287523154 looks on a white background.

## Color Contrast Check

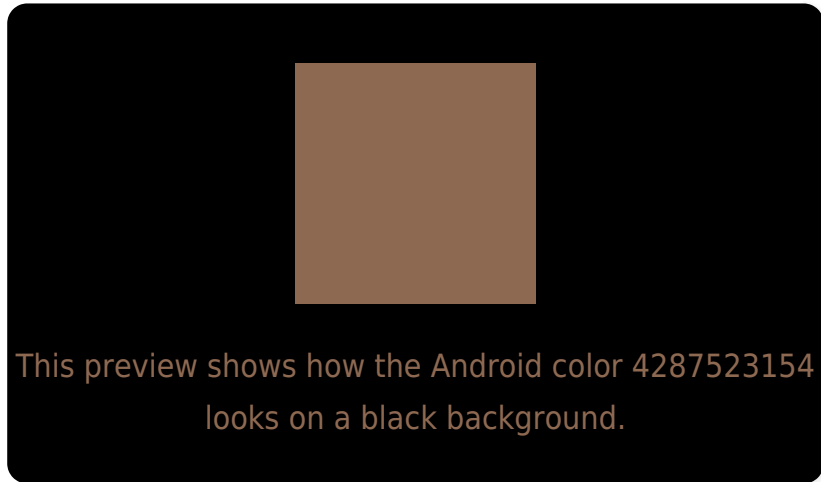
Large Text (above 18pt) WCAG AA ✓ Pass

Any Text WCAG AA ✓ Pass

Large Text (above 18pt) WCAG AAA ✓ Pass

Any Text WCAG AAA × Fail

# Black Background



## Color Contrast Check

Large Text (above 18pt) WCAG AA ✓ Pass

Any Text WCAG AA × Fail

Large Text (above 18pt) WCAG AAA × Fail

Any Text WCAG AAA × Fail

If you want to check with other color combinations, try the [Color Contrast Checker](#).



# Android 4287523154 Background



This preview shows how black text looks on a background with the Android color 4287523154.



This preview shows how white text looks on a background with the Android color 4287523154.

# Color Blindness Simulation

Color vision deficiency is a very complex topic, and I could not describe the different causes any better than Wikipedia does, so if you want to learn more, you should check out their [article about color blindness](#).

## Dichromacy



**Original Color**


4287523154

**Protanopia**

4286148950

**Deuteranopia**

4286999633



**Tritanopia**  
4287718765

# Trichromacy



**Original Color**  
4287523154

**Protanomaly**  
4286672469

**Deuteranomaly**  
4287195985

**Tritanomaly**  
4287653475

# Monochromacy



**Original Color**  
4287523154

**Achromatopsia**  
4285624689

**Achromatomaly**  
4286344806

# CSS Examples

## Text

The CSS property to change the color of the text to Android 4287523154 is called "color". The color property can be set on classes, ids or directly on the HTML element.

This example shows how text in the color `rgb(142, 105, 82)` looks like.

```
.text, #text, p{  
    color:rgb(142, 105, 82)  
}
```

If you want to add a text shadow in that color use the text-shadow property, you can generate a text shadow directly with our [CSS Text Shadow Generator](#).

Here you see how black text with a 4 pixel rgb(142, 105, 82) colored shadow looks like.

```
.shadow{ text-shadow: 4px 4px 2px rgb(142, 105, 82) }
```

## Border

The CSS property to change the border of an element to Android 4287523154 is called "border". The border property can be set on classes, ids or directly on the HTML element.

This example shows the color as border, it can be applied via the CSS property "border" or "border-color".

```
.border, #border, table{ border:4px solid rgb(142, 105, 82) }
```

If only the border color should be changed use the property `border-color`.

```
.border{ border-color:rgb(142, 105, 82) }
```

If you want to add a box shadow in that color use:

Here you see how a box with a 4 pixel `rgb(142, 105, 82)` colored shadow looks like.

```
.boxshadow{ -moz-box-shadow:4px 4px 4px  
4px rgb(142, 105, 82); -webkit-box-  
shadow:4px 4px 4px 4px rgb(142, 105, 82);  
box-shadow:4px 4px 4px 4px rgb(142, 105,  
82) }
```

# Background

The CSS property to change the background color of an element to Android 4287523154 is called "background". The background property can be set on classes, ids or directly on the HTML element.

```
.background, #background, body{  
background: rgb(142, 105, 82) }
```

If only the background color should be changed can be used:

```
.background{ background-color: rgb(142,  
105, 82) }
```

This example shows the color as background, it is applied via the CSS property "background".

To optimize and compress your CSS code, you can use our [online CSS compressor and optimizer](#) based on csstidy. If you want to create a linear or radial gradient as background or border, check our [CSS Gradient Generator](#).



Hey! You found this booklet interesting? Support Converting Colors with the new Membership Option!

The pro membership hides all ads, plus gives you double the colors in the color bucket, and more awesome pro features!

**[Learn more, Memberships starting at \\$2.50/m!](#)**

**Follow me  
on Twitter!**

@ConvertingColor