

Converting Colors

Android(4287589981)

Have a look what the booklet for
Android(4287589981) contains.

Android(4287589981)	3
<i>Conversions</i>	4
<i>Details</i>	6
<i>Harmonies</i>	11
<i>Previews</i>	23
<i>Color Blindness Simulation</i>	26
<i>CSS Examples</i>	29

Color

Android(4287589981)

Conversions

Conversions Part 1

Format	Color
Hex	8F6E5D
RGB	143, 110, 93
RGB Percent	56%, 43%, 36%
CMY	0.4392, 0.5686, 0.6353
CMYK	0.00, 0.23, 0.35, 0.44
HSL	20°, 21%, 46%
HSV	20°, 35%, 56%
XYZ	18.8794, 17.7818, 12.7931
YIQ	117.9290, 25.1250, 1.7090

Conversions

Conversions Part 2

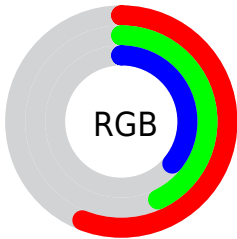
Format	Color
R_{YB}	143, 119, 93
Decimal	9399901
CIE _{Lab}	49.23, 10.57, 14.51
CIE _{LCh}	49, 17.950, 53.931
Yxy	17.7818, 0.3818, 0.3596
Android (android.graphics.Color)	4287589981 (0xFF8F6E5D)
YUV	117.9290, -12.2900, 21.9873
Hunter-Lab	42.1685, 6.1220, 11.5305

Details

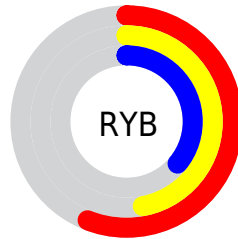
The Android color `4287589981` is a dark color, and the websafe version is hex `996666`. A complement of this color would be `4284317327`, and the grayscale version is `4285953654`.

A 20% lighter version of the original color is `4291207823`, and `4284169775` is the 20% darker color. If you saturate the color by 10%, you get `4287587663`, and if you desaturate by 10%, it is `4287592299`.

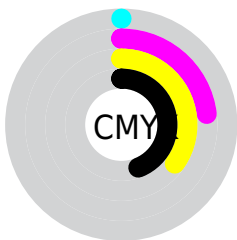
Distribution



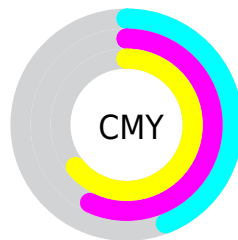
- Red (56%)
- Green (43%)
- Blue (36%)



- Red (56%)
- Yellow (47%)
- Blue (36%)



- Cyan (0%)
- Magenta (23%)
- Yellow (35%)
- Black (44%)



- Cyan (44%)
- Magenta (57%)
- Yellow (64%)

Brightness & Saturation Gradients

These gradients show how the Android color 4287589981 changes by changing the brightness by 10 percent. The first figure shows a shift by +10% for each color and the second figure -10%.

Similar to the brightness gradients but the following saturation gradients show a change of the Android color 4287589981 by changing the saturation by 10% instead.



4287589981



4287589981

4294967295



4285879877



4291207823



4284169775



4293049770



4282591258



4294957253



4281078784



4294964705



4279304192

4294967294



4278190080



4287589981



4287589981



4287587663



4287592299



4287585088



4287594874

■ 4287582770

■ 4287597192

■ 4287580196

■ 4287599766

■ 4287577878

■ 4287602085

■ 4287575303

■ 4287604659

■ 4287574272

■ 4287606977

■ 4287609551

■ 4287611870

Harmonies

Analogous

The Analogous color harmony consists of three colors that are next to each other on the color wheel.



4287916905



4287589981



4286804823

Triad

The Triadic color harmony groups three colors that are evenly spaced from another and form a triangle on the color wheel.



4287589981



4283596145



4285756049

Complementary

The Complementary color scheme is a pair of colors which are on the opposite of each other on the color wheel.



4287589981



4284317327

Split Complementary

Split-complementary colors differ from the complementary color scheme. The scheme consists of three colors, the original color and two neighbors of the complement color.



4284381075



4287589981



4283006337

Square

The Square scheme is like the rectangle color scheme, but the four colors are evenly spaced on the color wheel.



4287589981



4284644451



4283333517



4286999943

Rectangle

The Rectangle color scheme consists of four colors that form a rectangle on the color wheel.



4287589981



4286150231



4283333517



4285297810

Sweetspot

The Sweet Spot groups the original color and five complimentary colors.



4287589981



4290424488



4287585662



4284372819



4292796126



4284374622

Same Dimension

The Same Dimension uses a secret algorithm to generate beautiful new colors.



4287589981



4290414444



4287596381



4282860352



4287049216



4278715136

Inverse Universe

The Inverse Universe completely reimagines the original color for something new.



4284317327



4285309114



4284310927



4282402119



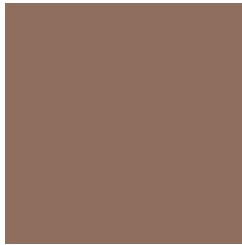
4278212999



4278191368

Previews

White Background



This preview shows how the Android color 4287589981 looks on a white background.

Color Contrast Check

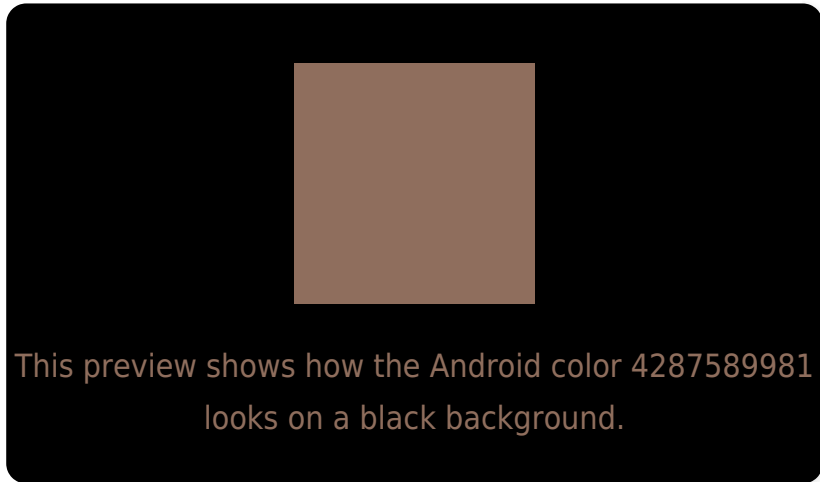
Large Text (above 18pt) WCAG AA ✓ Pass

Any Text WCAG AA ✓ Pass

Large Text (above 18pt) WCAG AAA ✓ Pass

Any Text WCAG AAA × Fail

Black Background



Color Contrast Check

Large Text (above 18pt) WCAG AA ✓ Pass

Any Text WCAG AA ✓ Pass

Large Text (above 18pt) WCAG AAA ✓ Pass

Any Text WCAG AAA × Fail

If you want to check with other color combinations, try the [Color Contrast Checker](#).

Android 4287589981 Background



This preview shows how black text looks on a background with the Android color 4287589981.



This preview shows how white text looks on a background with the Android color 4287589981.

Color Blindness Simulation

Color vision deficiency is a very complex topic, and I could not describe the different causes any better than Wikipedia does, so if you want to learn more, you should check out their [article about color blindness](#).

Dichromacy



Original Color
4287589981

Protanopia
4286346592

Deuteranopia
4287197533

Trichromacy



Original Color
4287589981

Protanomaly
4286804575

Deuteranomaly
4287328349

Tritanomaly
4287655019

Monochromacy



Original Color
4287589981

Achromatopsia
4285953654

Achromatomaly
4286542701

CSS Examples

Text

The CSS property to change the color of the text to Android 4287589981 is called "color". The color property can be set on classes, ids or directly on the HTML element.

This example shows how text in the color `rgb(143, 110, 93)` looks like.

```
.text, #text, p{  
    color:rgb(143, 110, 93)  
}
```

If you want to add a text shadow in that color use the text-shadow property, you can generate a text shadow directly with our [CSS Text Shadow Generator](#).

Here you see how black text with a 4 pixel rgb(143, 110, 93) colored shadow looks like.

```
.shadow{ text-shadow: 4px 4px 2px rgb(143, 110, 93) }
```

Border

The CSS property to change the border of an element to Android 4287589981 is called "border". The border property can be set on classes, ids or directly on the HTML element.

This example shows the color as border, it can be applied via the CSS property "border" or "border-color".

```
.border, #border, table{ border:4px solid rgb(143, 110, 93) }
```

If only the border color should be changed use the property `border-color`.

```
.border{ border-color:rgb(143, 110, 93) }
```

If you want to add a box shadow in that color use:

Here you see how a box with a 4 pixel `rgb(143, 110, 93)` colored shadow looks like.

```
.boxshadow{ -moz-box-shadow:4px 4px 4px  
4px rgb(143, 110, 93); -webkit-box-  
shadow:4px 4px 4px 4px rgb(143, 110, 93);  
box-shadow:4px 4px 4px 4px rgb(143, 110,  
93) }
```

Background

The CSS property to change the background color of an element to Android 4287589981 is called "background". The background property can be set on classes, ids or directly on the HTML element.

```
.background, #background, body{  
background: rgb(143, 110, 93) }
```

If only the background color should be changed can be used:

```
.background{ background-color: rgb(143,  
110, 93) }
```

This example shows the color as background, it is applied via the CSS property "background".

To optimize and compress your CSS code, you can use our [online CSS compressor and optimizer](#) based on csstidy. If you want to create a linear or radial gradient as background or border, check our [CSS Gradient Generator](#).

Hey! You found this booklet interesting? Support Converting Colors with the new Membership Option!

The pro membership hides all ads, plus gives you double the colors in the color bucket, and more awesome pro features!

[Learn more, Memberships starting at \\$2.50/m!](#)

**Follow me
on Twitter!**

@ConvertingColor