

Converting Colors

Android(4287589983)

Have a look what the booklet for
Android(4287589983) contains.

Android(4287589983)	3
<i>Conversions</i>	4
<i>Details</i>	6
<i>Harmonies</i>	11
<i>Previews</i>	23
<i>Color Blindness Simulation</i>	26
<i>CSS Examples</i>	29

Color

Android(4287589983)

Conversions

Conversions Part 1

Format	Color
Hex	8F6E5F
RGB	143, 110, 95
RGB Percent	56%, 43%, 37%
CMY	0.4392, 0.5686, 0.6275
CMYK	0.00, 0.23, 0.34, 0.44
HSL	19°, 20%, 47%
HSV	19°, 34%, 56%
XYZ	18.9692, 17.8177, 13.2659
YIQ	118.1570, 24.4830, 2.3310

Conversions

Conversions Part 2

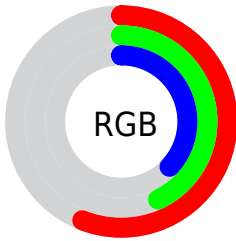
Format	Color
R_{YB}	143, 117, 95
Decimal	9399903
CIE _{Lab}	49.27, 10.84, 13.39
CIE _{LCh}	49, 17.231, 51.012
Yxy	17.8177, 0.3790, 0.3560
Android (android.graphics.Color)	4287589983 (0xFF8F6E5F)
YUV	118.1570, -11.4164, 21.7873
Hunter-Lab	42.2110, 6.3466, 10.9144

Details

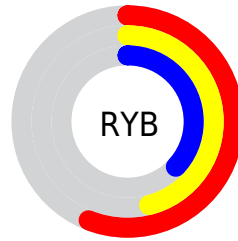
The Android color `4287589983` is a dark color, and the websafe version is hex `996666`. A complement of this color would be `4284448911`, and the grayscale version is `4285953654`.

A 20% lighter version of the original color is `4291207825`, and `4284169777` is the 20% darker color. If you saturate the color by 10%, you get `4287587409`, and if you desaturate by 10%, it is `4287592557`.

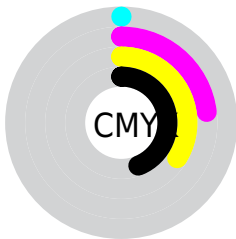
Distribution



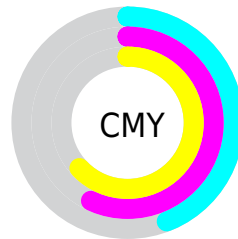
- Red (56%)
- Green (43%)
- Blue (37%)



- Red (56%)
- Yellow (46%)
- Blue (37%)



- Cyan (0%)
- Magenta (23%)
- Yellow (34%)
- Black (44%)



- Cyan (44%)
- Magenta (57%)
- Yellow (63%)

Brightness & Saturation Gradients

These gradients show how the Android color 4287589983 changes by changing the brightness by 10 percent. The first figure shows a shift by +10% for each color and the second figure -10%.

Similar to the brightness gradients but the following saturation gradients show a change of the Android color 4287589983 by changing the saturation by 10% instead.



4287589983



4287589983

4294967295



4285879879



4291207825



4284169777



4293049772



4282591260



4294957255



4281078786



4294964707



4279369728



4287190080



4287589983



4287589983



4287587409



4287592557



4287584834



4287595132

■ 4287582516

■ 4287597450

■ 4287579942

■ 4287600024

■ 4287577367

■ 4287602599

■ 4287574793

■ 4287605173

■ 4287573248

■ 4287607747

■ 4287610321

■ 4287612640

Harmonies

Analogous

The Analogous color harmony consists of three colors that are next to each other on the color wheel.



4287851371



4287589983



4286870361

Triad

The Triadic color harmony groups three colors that are evenly spaced from another and form a triangle on the color wheel.



4287589983



4283792752



4285690768

Complementary

The Complementary color scheme is a pair of colors which are on the opposite of each other on the color wheel.



4287589983



4284448911

Split Complementary

Split-complementary colors differ from the complementary color scheme. The scheme consists of three colors, the original color and two neighbors of the complement color.



4284381330



4287589983



4283202943

Square

The Square scheme is like the rectangle color scheme, but the four colors are evenly spaced on the color wheel.



4287589983



4284840802



4283399051



4286869128

Rectangle

The Rectangle color scheme consists of four colors that form a rectangle on the color wheel.



4287589983



4286281304



4283399051



4285232530

Sweetspot

The Sweet Spot groups the original color and five complimentary colors.



4287589983



4290424232



4287586177



4284372819



4292796126



4284374622

Same Dimension

The Same Dimension uses a secret algorithm to generate beautiful new colors.



4287589983



4290414448



4287595871



4282860096



4287048192



4278714880

Inverse Universe

The Inverse Universe completely reimagines the original color for something new.



4284448911



4285572026



4284443023



4282402119



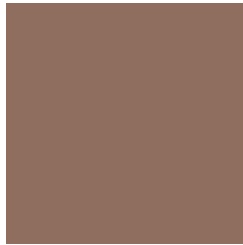
4278214023



4278191368

Previews

White Background



This preview shows how the Android color 4287589983 looks on a white background.

Color Contrast Check

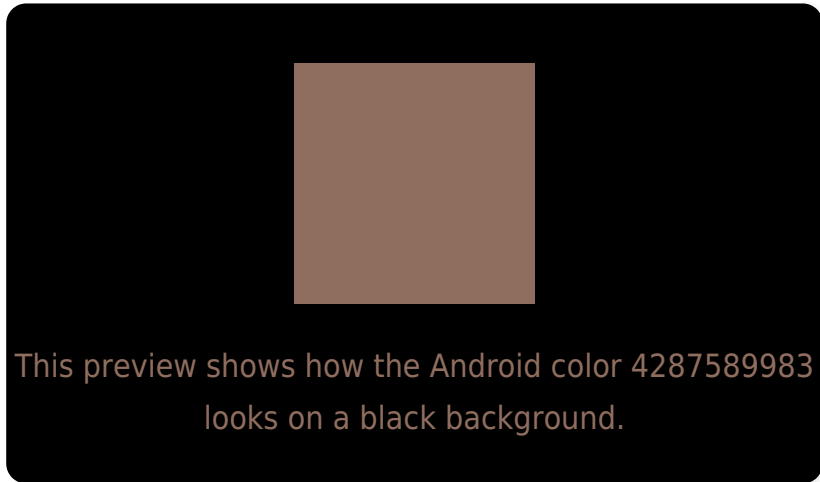
Large Text (above 18pt) WCAG AA ✓ Pass

Any Text WCAG AA ✓ Pass

Large Text (above 18pt) WCAG AAA ✓ Pass

Any Text WCAG AAA × Fail

Black Background



Color Contrast Check

Large Text (above 18pt) WCAG AA ✓ Pass

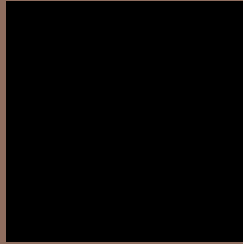
Any Text WCAG AA ✓ Pass

Large Text (above 18pt) WCAG AAA ✓ Pass

Any Text WCAG AAA × Fail

If you want to check with other color combinations, try the [Color Contrast Checker](#).

Android 4287589983 Background



This preview shows how black text looks on a background with the Android color 4287589983.



This preview shows how white text looks on a background with the Android color 4287589983.

Color Blindness Simulation

Color vision deficiency is a very complex topic, and I could not describe the different causes any better than Wikipedia does, so if you want to learn more, you should check out their [article about color blindness](#).

Dichromacy



Original Color

4287589983

Protanopia

4286346594

Deuteranopia

4287197534



Tritanopia
4287720307

Trichromacy



Original Color
4287589983

Protanomaly
4286804577

Deuteranomaly
4287328350

Tritanomaly
4287655020

Monochromacy



Original Color
4287589983

Achromatopsia
4285953654

Achromatomaly
4286542702

CSS Examples

Text

The CSS property to change the color of the text to Android 4287589983 is called "color". The color property can be set on classes, ids or directly on the HTML element.

This example shows how text in the color `rgb(143, 110, 95)` looks like.

```
.text, #text, p{  
    color:rgb(143, 110, 95)  
}
```

If you want to add a text shadow in that color use the text-shadow property, you can generate a text shadow directly with our [CSS Text Shadow Generator](#).

Here you see how black text with a 4 pixel rgb(143, 110, 95) colored shadow looks like.

```
.shadow{ text-shadow: 4px 4px 2px rgb(143, 110, 95) }
```

Border

The CSS property to change the border of an element to Android 4287589983 is called "border". The border property can be set on classes, ids or directly on the HTML element.

This example shows the color as border, it can be applied via the CSS property "border" or "border-color".

```
.border, #border, table{ border:4px solid rgb(143, 110, 95) }
```

If only the border color should be changed use the property border-color.

```
.border{ border-color:rgb(143, 110, 95) }
```

If you want to add a box shadow in that color use:

Here you see how a box with a 4 pixel rgb(143, 110, 95) colored shadow looks like.

```
.boxshadow{ -moz-box-shadow:4px 4px 4px  
4px rgb(143, 110, 95); -webkit-box-  
shadow:4px 4px 4px 4px rgb(143, 110, 95);  
box-shadow:4px 4px 4px 4px rgb(143, 110,  
95) }
```

Background

The CSS property to change the background color of an element to Android 4287589983 is called "background". The background property can be set on classes, ids or directly on the HTML element.

```
.background, #background, body{  
background: rgb(143, 110, 95) }
```

If only the background color should be changed can be used:

```
.background{ background-color: rgb(143,  
110, 95) }
```

This example shows the color as background, it is applied via the CSS property "background".

To optimize and compress your CSS code, you can use our [online CSS compressor and optimizer](#) based on csstidy. If you want to create a linear or radial gradient as background or border, check our [CSS Gradient Generator](#).

Hey! You found this booklet interesting? Support Converting Colors with the new Membership Option!

The pro membership hides all ads, plus gives you double the colors in the color bucket, and more awesome pro features!

[Learn more, Memberships starting at \\$2.50/m!](#)

**Follow me
on Twitter!**

@ConvertingColor