

Converting Colors

Android(4287653708)

Have a look what the booklet for
Android(4287653708) contains.

| | |
|--|----|
| Android(4287653708) | 3 |
| <i>Conversions</i> | 4 |
| <i>Details</i> | 6 |
| <i>Harmonies</i> | 11 |
| <i>Previews</i> | 23 |
| <i>Color Blindness Simulation</i> | 26 |
| <i>CSS Examples</i> | 29 |

Color

Android(4287653708)

Conversions

Conversions Part 1

| Format | Color |
|---------------|---------------------------|
| Hex | 90674C |
| RGB | 144, 103, 76 |
| RGB Percent | 56%, 40%, 30% |
| CMY | 0.4353, 0.5961, 0.7020 |
| CMYK | 0.00, 0.28, 0.47, 0.44 |
| HSL | 24°, 31%, 43% |
| HSV | 24°, 47%, 56% |
| XYZ | 17.6564, 16.1516, 9.0245 |
| YIQ | 112.1810, 33.1030, 0.2950 |

Conversions

Conversions Part 2

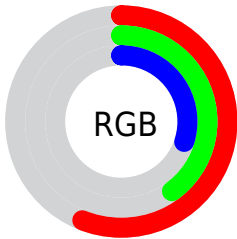
| Format | Color |
|-------------------------------------|---|
| RYB | 144, 121, 76 |
| Decimal | 9463628 |
| CIELab | 47.17, 13.00, 21.72 |
| CIELCh | 47, 25.310, 59.103 |
| Yxy | 16.1516, 0.4122, 0.3771 |
| Android (android.graphics.Color) | 4287653708 (0xFF90674C) |
| YUV | 112.1810, -17.8372, 27.9053 |
| Hunter-Lab | 40.1890, 8.0900, 14.8188 |

Details

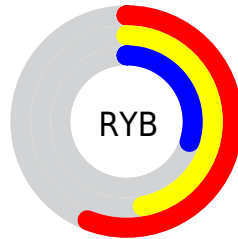
The Android color **4287653708** is a dark color, and the websafe version is hex **996633**. A complement of this color would be **4283200912**, and the grayscale version is **4285558896**.

A 20% lighter version of the original color is **4291336829**, and **4284168223** is the 20% darker color. If you saturate the color by 10%, you get **4287651390**, and if you desaturate by 10%, it is **4287656026**.

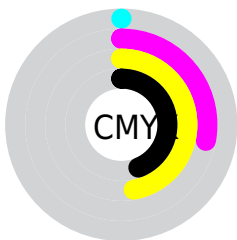
Distribution



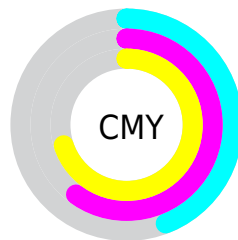
- Red (56%)
- Green (40%)
- Blue (30%)



- Red (56%)
- Yellow (47%)
- Blue (30%)



- Cyan (0%)
- Magenta (28%)
- Yellow (47%)
- Black (44%)



- Cyan (44%)
- Magenta (60%)
- Yellow (70%)

Brightness & Saturation Gradients

These gradients show how the Android color 4287653708 changes by changing the brightness by 10 percent. The first figure shows a shift by +10% for each color and the second figure -10%.

Similar to the brightness gradients but the following saturation gradients show a change of the Android color 4287653708 by changing the saturation by 10% instead.



4287653708



4287653708

4294967295



4285878069



4291336829



4284168223



4293178775



4282524169



4294955442



4280946176



4294962638



4278321152



4294967274



4278190080



4287653708



4287653708



4287651390



4287656026



4287649327



4287658089

■ 4287647009

■ 4287660407

■ 4287644690

■ 4287662726

■ 4287642628

■ 4287664788

■ 4287641856

■ 4287667106

■ 4287669425

■ 4287671487

■ 4287673806

Harmonies

Analogous

The Analogous color harmony consists of three colors that are next to each other on the color wheel.



4288242012



4287653708



4286541381

Triad

The Triadic color harmony groups three colors that are evenly spaced from another and form a triangle on the color wheel.



4287653708



4281760622



4285688725

Complementary

The Complementary color scheme is a pair of colors which are on the opposite of each other on the color wheel.



4287653708



4283200912

Split Complementary

Split-complementary colors differ from the complementary color scheme. The scheme consists of three colors, the original color and two neighbors of the complement color.



4283527834



4287653708



4280515460

Square

The Square scheme is like the rectangle color scheme, but the four colors are evenly spaced on the color wheel.



4287653708



4283464025



4281366676



4287259526

Rectangle

The Rectangle color scheme consists of four colors that form a rectangle on the color wheel.



4287653708



4285559623



4281366676



4284968344

Sweetspot

The Sweet Spot groups the original color and five complimentary colors.



4287653708



4290423456



4287646838



4284372302



4292796126



4284374622

Same Dimension

The Same Dimension uses a secret algorithm to generate beautiful new colors.



4287653708



4290411088



4287662156



4282860352



4287051264



4278715136

Inverse Universe

The Inverse Universe completely reimagines the original color for something new.



4283200912



4283470010



4283192464



4282402119



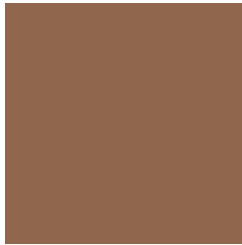
4278210951



4278191368

Previews

White Background



This preview shows how the Android color 4287653708 looks on a white background.

Color Contrast Check

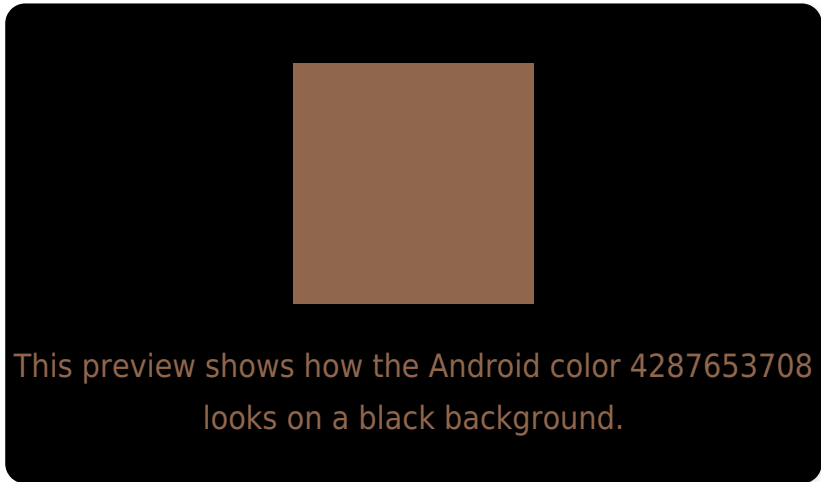
Large Text (above 18pt) WCAG AA ✓ Pass

Any Text WCAG AA ✓ Pass

Large Text (above 18pt) WCAG AAA ✓ Pass

Any Text WCAG AAA × Fail

Black Background



Color Contrast Check

Large Text (above 18pt) WCAG AA ✓ Pass

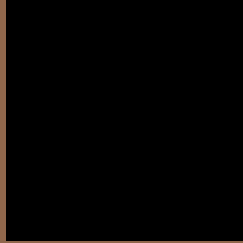
Any Text WCAG AA × Fail

Large Text (above 18pt) WCAG AAA × Fail

Any Text WCAG AAA × Fail

If you want to check with other color combinations, try the [Color Contrast Checker](#).

Android 4287653708 Background



This preview shows how black text looks on a background with the Android color 4287653708.



This preview shows how white text looks on a background with the Android color 4287653708.

Color Blindness Simulation

Color vision deficiency is a very complex topic, and I could not describe the different causes any better than Wikipedia does, so if you want to learn more, you should check out their [article about color blindness](#).

Dichromacy



Original Color
4287653708

Protanopia
4286148688

Deuteranopia
4286999371

Trichromacy



Original Color
4287653708

Protanomaly
4286672207

Deuteranomaly
4287261259

Tritanomaly
4287784031

Monochromacy



Original Color
4287653708

Achromatopsia
4285558896

Achromatomaly
4286344547

CSS Examples

Text

The CSS property to change the color of the text to Android 4287653708 is called "color". The color property can be set on classes, ids or directly on the HTML element.

This example shows how text in the color `rgb(144, 103, 76)` looks like.

```
.text, #text, p{  
    color:rgb(144, 103, 76)  
}
```

If you want to add a text shadow in that color use the text-shadow property, you can generate a text shadow directly with our [CSS Text Shadow Generator](#).

Here you see how black text with a 4 pixel rgb(144, 103, 76) colored shadow looks like.

```
.shadow{ text-shadow: 4px 4px 2px rgb(144, 103, 76) }
```

Border

The CSS property to change the border of an element to Android 4287653708 is called "border". The border property can be set on classes, ids or directly on the HTML element.

This example shows the color as border, it can be applied via the CSS property "border" or "border-color".

```
.border, #border, table{ border:4px solid rgb(144, 103, 76) }
```

If only the border color should be changed use the property border-color.

```
.border{ border-color:rgb(144, 103, 76) }
```

If you want to add a box shadow in that color use:

Here you see how a box with a 4 pixel rgb(144, 103, 76) colored shadow looks like.

```
.boxshadow{ -moz-box-shadow:4px 4px 4px  
4px rgb(144, 103, 76); -webkit-box-  
shadow:4px 4px 4px 4px rgb(144, 103, 76);  
box-shadow:4px 4px 4px 4px rgb(144, 103,  
76) }
```

Background

The CSS property to change the background color of an element to Android 4287653708 is called "background". The background property can be set on classes, ids or directly on the HTML element.

```
.background, #background, body{  
background: rgb(144, 103, 76) }
```

If only the background color should be changed can be used:

```
.background{ background-color: rgb(144,  
103, 76) }
```

This example shows the color as background, it is applied via the CSS property "background".

To optimize and compress your CSS code, you can use our [online CSS compressor and optimizer](#) based on csstidy. If you want to create a linear or radial gradient as background or border, check our [CSS Gradient Generator](#).

Hey! You found this booklet interesting? Support Converting Colors with the new Membership Option!

The pro membership hides all ads, plus gives you double the colors in the color bucket, and more awesome pro features!

[Learn more, Memberships starting at \\$2.50/m!](#)

**Follow me
on Twitter!**

@ConvertingColor