

Converting Colors

Android(4287657838)

Have a look what the booklet for
Android(4287657838) contains.

Android(4287657838)	3
<i>Conversions</i>	4
<i>Details</i>	6
<i>Harmonies</i>	11
<i>Previews</i>	23
<i>Color Blindness Simulation</i>	26
<i>CSS Examples</i>	29

Color

Android(4287657838)

Conversions

Conversions Part 1

Format	Color
Hex	90776E
RGB	144, 119, 110
RGB Percent	56%, 47%, 43%
CMY	0.4353, 0.5333, 0.5686
CMYK	0.00, 0.17, 0.24, 0.44
HSL	16°, 13%, 50%
HSV	16°, 24%, 56%
XYZ	20.9129, 20.2487, 17.5580
YIQ	125.4490, 17.7890, 2.5010

Conversions

Conversions Part 2

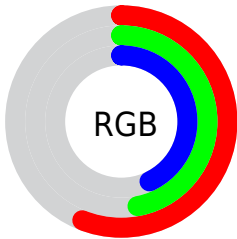
Format	Color
R_{YB}	144, 122, 110
Decimal	9467758
CIE Lab	52.12, 8.24, 8.58
CIE LCh	52, 11.901, 46.156
Yxy	20.2487, 0.3561, 0.3448
Android (android.graphics.Color)	4287657838 (0xFF90776E)
YUV	125.4490, -7.6164, 16.2692
Hunter-Lab	44.9986, 4.2096, 8.3646

Details

The Android color `4287657838` is a dark color, and the websafe version is hex `996666`. A complement of this color would be `4285433744`, and the grayscale version is `4286479998`.

A 20% lighter version of the original color is `4291210146`, and `4284303166` is the 20% darker color. If you saturate the color by 10%, you get `4287655008`, and if you desaturate by 10%, it is `4287660668`.

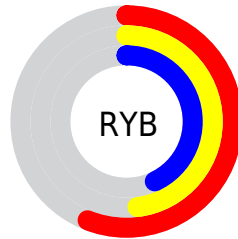
Distribution



Red (56%)

Green (47%)

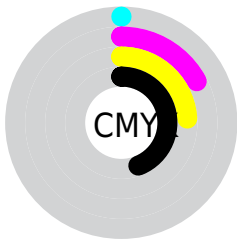
Blue (43%)



Red (56%)

Yellow (48%)

Blue (43%)

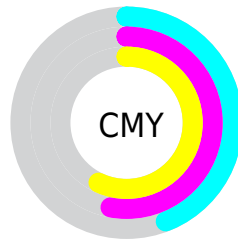


Cyan (0%)

Magenta (17%)

Yellow (24%)

Black (44%)



Cyan (44%)

Magenta (53%)

Yellow (57%)

Brightness & Saturation Gradients

These gradients show how the Android color 4287657838 changes by changing the brightness by 10 percent. The first figure shows a shift by +10% for each color and the second figure -10%.


Similar to the brightness gradients but the following saturation gradients show a change of the Android color 4287657838 by changing the saturation by 10% instead.

 4287657838

 4287657838

4294967295

 4285947478

 4291210146

 4284303166

 4293052349

 4282724393

 4294960088

 4281211668

 4294967285

 4279894272

 4278190080

 4287657838

 4287657838

 4287655008

 4287660668

 4287652433

 4287663243

 4287649603

 4287666073

 4287647028

 4287668648

 4287644198

 4287671478

 4287641368

 4287674308

 4287638793

 4287676883

 4287636992

 4287679713

 4287682288

Harmonies

Analogous

The Analogous color harmony consists of three colors that are next to each other on the color wheel.



4287788407



4287657838



4287199849

Triad

The Triadic color harmony groups three colors that are evenly spaced from another and form a triangle on the color wheel.



4287657838



4285039223



4286086032

Complementary

The Complementary color scheme is a pair of colors which are on the opposite of each other on the color wheel.



4287657838



4285433744

Split Complementary

Split-complementary colors differ from the complementary color scheme. The scheme consists of three colors, the original color and two neighbors of the complement color.



4285300624



4287657838



4284646018

Square

The Square scheme is like the rectangle color scheme, but the four colors are evenly spaced on the color wheel.



4287657838



4285759598



4284711307



4286937226

Rectangle

The Rectangle color scheme consists of four colors that form a rectangle on the color wheel.



4287657838



4286741608



4284711307



4285824144

Sweetspot

The Sweet Spot groups the original color and five complimentary colors.



4287657838



4290425261



4287655560



4284373335



4292796126



4284374622

Same Dimension

The Same Dimension uses a secret algorithm to generate beautiful new colors.



4287657838



4290417798



4287662190



4282860096



4287046656



4278714880

Inverse Universe

The Inverse Universe completely reimagines the original color for something new.



4285433744



4287016122



4285429648



4282402375



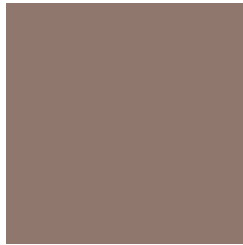
4278215559



4278191624

Previews

White Background



This preview shows how the Android color 4287657838 looks on a white background.

Color Contrast Check

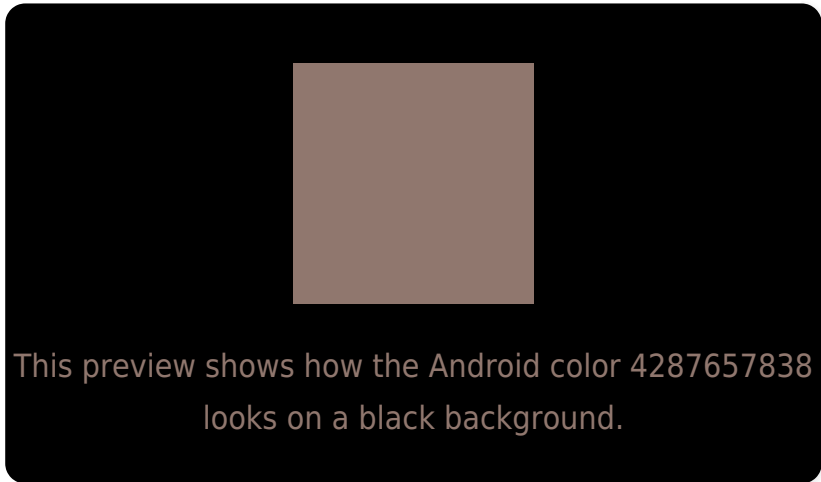
Large Text (above 18pt) WCAG AA ✓ Pass

Any Text WCAG AA ✗ Fail

Large Text (above 18pt) WCAG AAA ✗ Fail

Any Text WCAG AAA ✗ Fail

Black Background



Color Contrast Check

Large Text (above 18pt) WCAG AA ✓ Pass

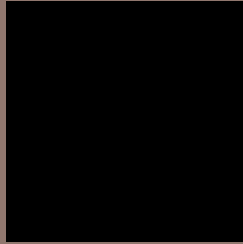
Any Text WCAG AA ✓ Pass

Large Text (above 18pt) WCAG AAA ✓ Pass

Any Text WCAG AAA × Fail

If you want to check with other color combinations, try the [Color Contrast Checker](#).

Android 4287657838 Background



This preview shows how black text looks on a background with the Android color 4287657838.



This preview shows how white text looks on a background with the Android color 4287657838.

Color Blindness Simulation

Color vision deficiency is a very complex topic, and I could not describe the different causes any better than Wikipedia does, so if you want to learn more, you should check out their [article about color blindness](#).

Dichromacy



Original Color
[4287657838](#)

Protanopia
[4286676081](#)

Deuteranopia
[4287527022](#)



Tritanopia
4287788414

Trichromacy



Original Color
4287657838

Protanomaly
4287003248

Deuteranomaly
4287592558

Tritanomaly
4287723128

Monochromacy



Original Color
4287657838

Achromatopsia
4286414205

Achromatomaly
4286872440

CSS Examples

Text

The CSS property to change the color of the text to Android 4287657838 is called "color". The color property can be set on classes, ids or directly on the HTML element.

This example shows how text in the color `rgb(144, 119, 110)` looks like.

```
.text, #text, p{  
    color:rgb(144, 119, 110)  
}
```

If you want to add a text shadow in that color use the text-shadow property, you can generate a text shadow directly with our [CSS Text Shadow Generator](#).

Here you see how black text with a 4 pixel rgb(144, 119, 110) colored shadow looks like.

```
.shadow{ text-shadow: 4px 4px 2px rgb(144, 119, 110) }
```

Border

The CSS property to change the border of an element to Android 4287657838 is called "border". The border property can be set on classes, ids or directly on the HTML element.

This example shows the color as border, it can be applied via the CSS property "border" or "border-color".

```
.border, #border, table{ border:4px solid rgb(144, 119, 110) }
```

If only the border color should be changed use the property `border-color`.

```
.border{ border-color:rgb(144, 119, 110) }
```

If you want to add a box shadow in that color use:

Here you see how a box with a 4 pixel `rgb(144, 119, 110)` colored shadow looks like.

```
.boxshadow{ -moz-box-shadow:4px 4px 4px  
4px rgb(144, 119, 110); -webkit-box-  
shadow:4px 4px 4px 4px rgb(144, 119, 110);  
box-shadow:4px 4px 4px 4px rgb(144, 119,  
110) }
```

Background

The CSS property to change the background color of an element to Android 4287657838 is called "background". The background property can be set on classes, ids or directly on the HTML element.

```
.background, #background, body{  
background: rgb(144, 119, 110) }
```

If only the background color should be changed can be used:

```
.background{ background-color: rgb(144,  
119, 110) }
```

This example shows the color as background, it is applied via the CSS property "background".

To optimize and compress your CSS code, you can use our [online CSS compressor and optimizer](#) based on csstidy. If you want to create a linear or radial gradient as background or border, check our [CSS Gradient Generator](#).

Hey! You found this booklet interesting? Support Converting Colors with the new Membership Option!

The pro membership hides all ads, plus gives you double the colors in the color bucket, and more awesome pro features!

[Learn more, Memberships starting at \\$2.50/m!](#)

**Follow me
on Twitter!**

@ConvertingColor