

Converting Colors

Android(4287786585)

Have a look what the booklet for
Android(4287786585) contains.

Android(4287786585)	3
<i>Conversions</i>	4
<i>Details</i>	6
<i>Harmonies</i>	11
<i>Previews</i>	23
<i>Color Blindness Simulation</i>	26
<i>CSS Examples</i>	29

Color

Android(4287786585)

Conversions

Conversions Part 1

Format	Color
Hex	926E59
RGB	146, 110, 89
RGB Percent	57%, 43%, 35%
CMY	0.4275, 0.5686, 0.6510
CMYK	0.00, 0.25, 0.39, 0.43
HSL	22°, 24%, 46%
HSV	22°, 39%, 57%
XYZ	19.2332, 17.9841, 11.9088
YIQ	118.3700, 28.1970, 1.1010

Conversions

Conversions Part 2

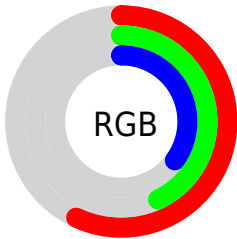
Format	Color
R_{YB}	146, 122, 89
Decimal	9596505
CIE _{Lab}	49.48, 11.32, 17.25
CIE _{LCh}	49, 20.627, 56.726
Yxy	17.9841, 0.3915, 0.3661
Android (android.graphics.Color)	4287786585 (0xFF926E59)
YUV	118.3700, -14.4794, 24.2315
Hunter-Lab	42.4077, 6.7417, 13.0358

Details

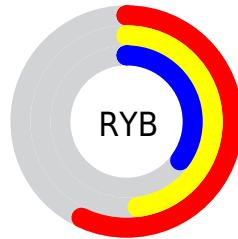
The Android color `4287786585` is a dark color, and the websafe version is hex `996666`. A complement of this color would be `4284054930`, and the grayscale version is `4285953654`.

A 20% lighter version of the original color is `4291404427`, and `4284366379` is the 20% darker color. If you saturate the color by 10%, you get `4287784266`, and if you desaturate by 10%, it is `4287788904`.

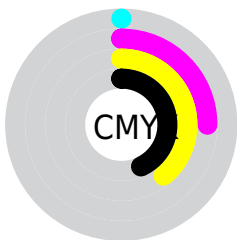
Distribution



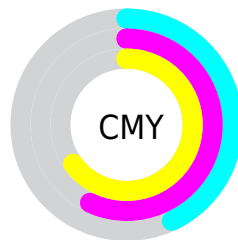
- Red (57%)
- Green (43%)
- Blue (35%)



- Red (57%)
- Yellow (48%)
- Blue (35%)



- Cyan (0%)
- Magenta (25%)
- Yellow (39%)
- Black (43%)



- Cyan (43%)
- Magenta (57%)
- Yellow (65%)

Brightness & Saturation Gradients

These gradients show how the Android color 4287786585 changes by changing the brightness by 10 percent. The first figure shows a shift by +10% for each color and the second figure -10%.

Similar to the brightness gradients but the following saturation gradients show a change of the Android color 4287786585 by changing the saturation by 10% instead.



4287786585



4287786585

4294967295



4286076482



4291404427



4284366379



4293311909



4282722326



4294957249



4281209856



4294964701



4279500800



4294967289



4278190080



4287786585



4287786585



4287784266



4287788904



4287781948



4287791222

■ 4287779373

■ 4287793797

■ 4287777055

■ 4287796115

■ 4287774736

■ 4287798434

■ 4287772417

■ 4287800753

■ 4287772160

■ 4287803327

■ 4287805646

■ 4287807964

Harmonies

Analogous

The Analogous color harmony consists of three colors that are next to each other on the color wheel.



4288244327



4287786585



4286870611

Triad

The Triadic color harmony groups three colors that are evenly spaced from another and form a triangle on the color wheel.



4287786585



4283137907



4285952661

Complementary

The Complementary color scheme is a pair of colors which are on the opposite of each other on the color wheel.



4287786585



4284054930

Split Complementary

Split-complementary colors differ from the complementary color scheme. The scheme consists of three colors, the original color and two neighbors of the complement color.



4284315800



4287786585



4282482565

Square

The Square scheme is like the rectangle color scheme, but the four colors are evenly spaced on the color wheel.



4287786585



4284382562



4282940562



4287261833

Rectangle

The Rectangle color scheme consists of four colors that form a rectangle on the color wheel.



4287786585



4286085204



4282940562



4285428887

Sweetspot

The Sweet Spot groups the original color and five complimentary colors.



4287786585



4290621094



4287781245



4284372561



4292796126



4284374622

Same Dimension

The Same Dimension uses a secret algorithm to generate beautiful new colors.



4287786585



4290610532



4287793753



4283057475



4287247104



4278846464

Inverse Universe

The Inverse Universe completely reimagines the original color for something new.



4284054930



4284783805



4284047762



4282599242



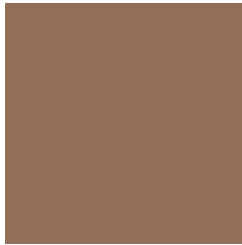
4278212490



4278191626

Previews

White Background



This preview shows how the Android color 4287786585 looks on a white background.

Color Contrast Check

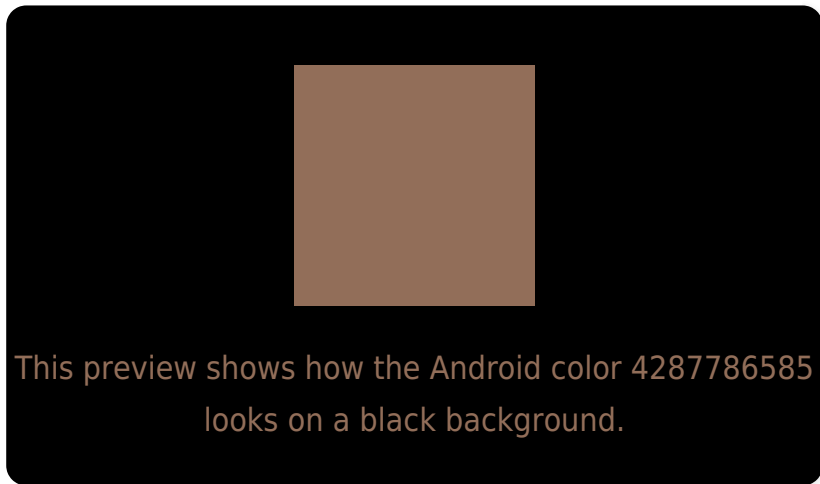
Large Text (above 18pt) WCAG AA ✓ Pass

Any Text WCAG AA ✓ Pass

Large Text (above 18pt) WCAG AAA ✓ Pass

Any Text WCAG AAA × Fail

Black Background



Color Contrast Check

Large Text (above 18pt) WCAG AA ✓ Pass

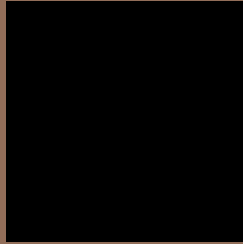
Any Text WCAG AA ✓ Pass

Large Text (above 18pt) WCAG AAA ✓ Pass

Any Text WCAG AAA × Fail

If you want to check with other color combinations, try the [Color Contrast Checker](#).

Android 4287786585 Background



This preview shows how black text looks on a background with the Android color 4287786585.



This preview shows how white text looks on a background with the Android color 4287786585.

Color Blindness Simulation

Color vision deficiency is a very complex topic, and I could not describe the different causes any better than Wikipedia does, so if you want to learn more, you should check out their [article about color blindness](#).

Dichromacy



Original Color
4287786585

Protanopia
4286477916

Deuteranopia
4287328600

Trichromacy



Original Color

4287786585

Protanomaly

4286935899

Deuteranomaly

4287524952

Tritanomaly

4287851370

Monochromacy



Original Color

4287786585

Achromatopsia

4285953654

Achromatomaly

4286608235

CSS Examples

Text

The CSS property to change the color of the text to Android 4287786585 is called "color". The color property can be set on classes, ids or directly on the HTML element.

This example shows how text in the color `rgb(146, 110, 89)` looks like.

```
.text, #text, p{  
    color:rgb(146, 110, 89)  
}
```

If you want to add a text shadow in that color use the text-shadow property, you can generate a text shadow directly with our [CSS Text Shadow Generator](#).

Here you see how black text with a 4 pixel rgb(146, 110, 89) colored shadow looks like.

```
.shadow{ text-shadow: 4px 4px 2px rgb(146, 110, 89) }
```

Border

The CSS property to change the border of an element to Android 4287786585 is called "border". The border property can be set on classes, ids or directly on the HTML element.

This example shows the color as border, it can be applied via the CSS property "border" or "border-color".

```
.border, #border, table{ border:4px solid rgb(146, 110, 89) }
```

If only the border color should be changed use the property `border-color`.

```
.border{ border-color:rgb(146, 110, 89) }
```

If you want to add a box shadow in that color use:

Here you see how a box with a 4 pixel `rgb(146, 110, 89)` colored shadow looks like.

```
.boxshadow{ -moz-box-shadow:4px 4px 4px  
4px rgb(146, 110, 89); -webkit-box-  
shadow:4px 4px 4px 4px rgb(146, 110, 89);  
box-shadow:4px 4px 4px 4px rgb(146, 110,  
89) }
```

Background

The CSS property to change the background color of an element to Android 4287786585 is called "background". The background property can be set on classes, ids or directly on the HTML element.

```
.background, #background, body{  
background: rgb(146, 110, 89) }
```

If only the background color should be changed can be used:

```
.background{ background-color: rgb(146,  
110, 89) }
```

This example shows the color as background, it is applied via the CSS property "background".

To optimize and compress your CSS code, you can use our [online CSS compressor and optimizer](#) based on csstidy. If you want to create a linear or radial gradient as background or border, check our [CSS Gradient Generator](#).

Hey! You found this booklet interesting? Support Converting Colors with the new Membership Option!

The pro membership hides all ads, plus gives you double the colors in the color bucket, and more awesome pro features!

[Learn more, Memberships starting at \\$2.50/m!](#)

**Follow me
on Twitter!**

@ConvertingColor