

Converting Colors

Android(4287983185)

Have a look what the booklet for
Android(4287983185) contains.

Android(4287983185)	3
<i>Conversions</i>	4
<i>Details</i>	6
<i>Harmonies</i>	11
<i>Previews</i>	23
<i>Color Blindness Simulation</i>	26
<i>CSS Examples</i>	29

Color

Android(4287983185)

Conversions

Conversions Part 1

Format	Color
Hex	956E51
RGB	149, 110, 81
RGB Percent	58%, 43%, 32%
CMY	0.4157, 0.5686, 0.6824
CMYK	0.00, 0.26, 0.46, 0.42
HSL	26°, 30%, 45%
HSV	26°, 46%, 58%
XYZ	19.4556, 18.1355, 10.2597
YIQ	118.3550, 32.5530, -0.7510

Conversions

Conversions Part 2

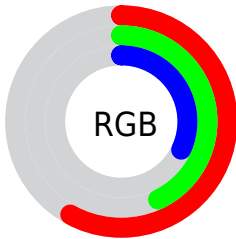
Format	Color
R_{YB}	149, 132, 81
Decimal	9793105
CIE Lab	49.66, 11.65, 22.20
CIE LCh	50, 25.071, 62.299
Yxy	18.1355, 0.4066, 0.3790
Android (android.graphics.Color)	4287983185 (0xFF956E51)
YUV	118.3550, -18.4160, 26.8757
Hunter-Lab	42.5858, 7.0236, 15.5261

Details

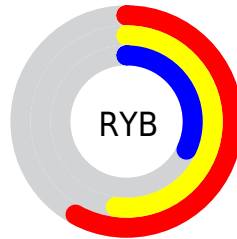
The Android color `4287983185` is a dark color, and the websafe version is hex `996633`. A complement of this color would be `4283529365`, and the grayscale version is `4286019447`.

A 20% lighter version of the original color is `4291666563`, and `4284497444` is the 20% darker color. If you saturate the color by 10%, you get `4287980866`, and if you desaturate by 10%, it is `4287985504`.

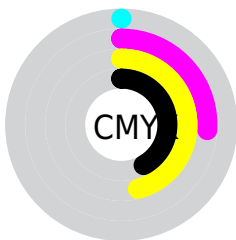
Distribution



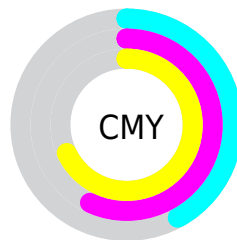
- Red (58%)
- Green (43%)
- Blue (32%)



- Red (58%)
- Yellow (52%)
- Blue (32%)



- Cyan (0%)
- Magenta (26%)
- Yellow (46%)
- Black (42%)



- Cyan (42%)
- Magenta (57%)
- Yellow (68%)

Brightness & Saturation Gradients

These gradients show how the Android color 4287983185 changes by changing the brightness by 10 percent. The first figure shows a shift by +10% for each color and the second figure -10%.

Similar to the brightness gradients but the following saturation gradients show a change of the Android color 4287983185 by changing the saturation by 10% instead.



4287983185



4287983185

4294967295



4286207546



4291666563



4284497444



4293508509



4282853391



4294957240



4281275392



4294964691



4279631872



4294967280



4278190080



4287983185



4287983185



4287980866



4287985504



4287978803



4287987567

■ 4287976484

■ 4287989886

■ 4287974421

■ 4287991949

■ 4287972102

■ 4287994268

■ 4287971328

■ 4287996330

■ 4287998649

■ 4288000712

■ 4288003031

Harmonies

Analogous

The Analogous color harmony consists of three colors that are next to each other on the color wheel.



4288637024



4287983185



4286805323

Triad

The Triadic color harmony groups three colors that are evenly spaced from another and form a triangle on the color wheel.



4287983185



4282090103



4286279834

Complementary

The Complementary color scheme is a pair of colors which are on the opposite of each other on the color wheel.



4287983185



4283529365

Split Complementary

Split-complementary colors differ from the complementary color scheme. The scheme consists of three colors, the original color and two neighbors of the complement color.



4284250272



4287983185



4281172364

Square

The Square scheme is like the rectangle color scheme, but the four colors are evenly spaced on the color wheel.



4287983185



4283662434



4282154651



4287850890

Rectangle

The Rectangle color scheme consists of four colors that form a rectangle on the color wheel.



4287983185



4285823566



4282154651



4285625245

Sweetspot

The Sweet Spot groups the original color and five complimentary colors.



4287983185



4290949799



4287975801



4284569424



4292927712



4284572001

Same Dimension

The Same Dimension uses a secret algorithm to generate beautiful new colors.



4287983185



4290938199



4287991633



4283057731



4287249152



4278846464

Inverse Universe

The Inverse Universe completely reimagines the original color for something new.



4283529365



4283929794



4283520917



4282599242



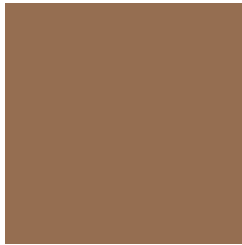
4278210442



4278191626

Previews

White Background



This preview shows how the Android color 4287983185 looks on a white background.

Color Contrast Check

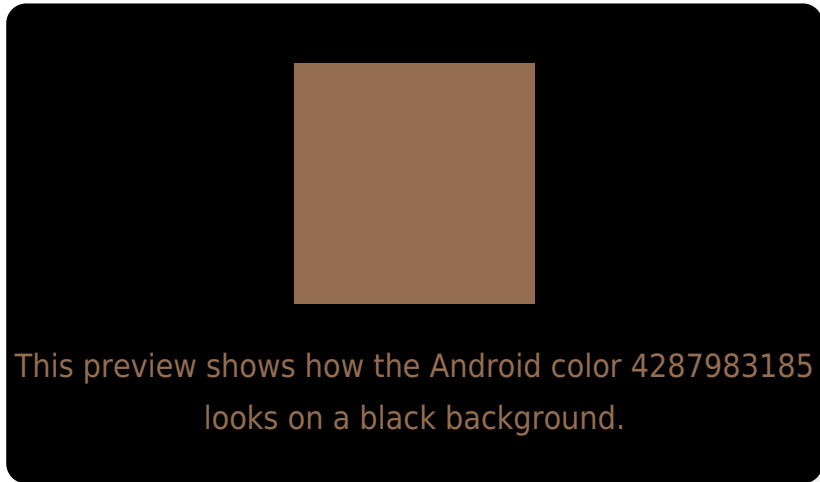
Large Text (above 18pt) WCAG AA ✓ Pass

Any Text WCAG AA ✓ Pass

Large Text (above 18pt) WCAG AAA ✓ Pass

Any Text WCAG AAA × Fail

Black Background



Color Contrast Check

Large Text (above 18pt) WCAG AA ✓ Pass

Any Text WCAG AA ✓ Pass

Large Text (above 18pt) WCAG AAA ✓ Pass

Any Text WCAG AAA × Fail

If you want to check with other color combinations, try the [Color Contrast Checker](#).

Android 4287983185 Background



This preview shows how black text looks on a background with the Android color 4287983185.



This preview shows how white text looks on a background with the Android color 4287983185.

Color Blindness Simulation

Color vision deficiency is a very complex topic, and I could not describe the different causes any better than Wikipedia does, so if you want to learn more, you should check out their [article about color blindness](#).


Dichromacy



Original Color
4287983185

Protanopia
4286608980

Deuteranopia
4287525200



Tritanopia
4288178802

Trichromacy



Original Color
4287983185

Protanomaly
4287132499

Deuteranomaly
4287721552

Tritanomaly
4288113510

Monochromacy



Original Color
4287983185

Achromatopsia
4285953654

Achromatomaly
4286673769

CSS Examples

Text

The CSS property to change the color of the text to Android 4287983185 is called "color". The color property can be set on classes, ids or directly on the HTML element.

This example shows how text in the color `rgb(149, 110, 81)` looks like.

```
.text, #text, p{  
    color:rgb(149, 110, 81)  
}
```

If you want to add a text shadow in that color use the text-shadow property, you can generate a text shadow directly with our [CSS Text Shadow Generator](#).

Here you see how black text with a 4 pixel rgb(149, 110, 81) colored shadow looks like.

```
.shadow{ text-shadow: 4px 4px 2px rgb(149, 110, 81) }
```

Border

The CSS property to change the border of an element to Android 4287983185 is called "border". The border property can be set on classes, ids or directly on the HTML element.

This example shows the color as border, it can be applied via the CSS property "border" or "border-color".

```
.border, #border, table{ border:4px solid rgb(149, 110, 81) }
```

If only the border color should be changed use the property `border-color`.

```
.border{ border-color:rgb(149, 110, 81) }
```

If you want to add a box shadow in that color use:

Here you see how a box with a 4 pixel `rgb(149, 110, 81)` colored shadow looks like.

```
.boxshadow{ -moz-box-shadow:4px 4px 4px  
4px rgb(149, 110, 81); -webkit-box-  
shadow:4px 4px 4px 4px rgb(149, 110, 81);  
box-shadow:4px 4px 4px 4px rgb(149, 110,  
81) }
```

Background

The CSS property to change the background color of an element to Android 4287983185 is called "background". The background property can be set on classes, ids or directly on the HTML element.

```
.background, #background, body{  
background: rgb(149, 110, 81) }
```

If only the background color should be changed can be used:

```
.background{ background-color: rgb(149,  
110, 81) }
```

This example shows the color as background, it is applied via the CSS property "background".

To optimize and compress your CSS code, you can use our [online CSS compressor and optimizer](#) based on csstidy. If you want to create a linear or radial gradient as background or border, check our [CSS Gradient Generator](#).

Hey! You found this booklet interesting? Support Converting Colors with the new Membership Option!

The pro membership hides all ads, plus gives you double the colors in the color bucket, and more awesome pro features!

[Learn more, Memberships starting at \\$2.50/m!](#)

**Follow me
on Twitter!**

@ConvertingColor