

Converting Colors

Android(4287984731)

Have a look what the booklet for
Android(4287984731) contains.

Android(4287984731)	3
<i>Conversions</i>	4
<i>Details</i>	6
<i>Harmonies</i>	11
<i>Previews</i>	23
<i>Color Blindness Simulation</i>	26
<i>CSS Examples</i>	29

Color

Android(4287984731)

Conversions

Conversions Part 1

Format	Color
Hex	95745B
RGB	149, 116, 91
RGB Percent	58%, 45%, 36%
CMY	0.4157, 0.5451, 0.6431
CMYK	0.00, 0.22, 0.39, 0.42
HSL	26°, 24%, 47%
HSV	26°, 39%, 58%
XYZ	20.5281, 19.6357, 12.6056
YIQ	123.0170, 27.6930, -0.7790

Conversions

Conversions Part 2

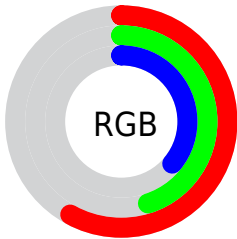
Format	Color
RYB	149, 135, 91
Decimal	9794651
CIELab	51.42, 9.37, 18.77
CIElCh	51, 20.981, 63.460
Yxy	19.6357, 0.3890, 0.3721
Android (android.graphics.Color)	4287984731 (0xFF95745B)
YUV	123.0170, -15.7844, 22.7871
Hunter-Lab	44.3122, 5.1460, 14.1521

Details

The Android color `4287984731` is a dark color, and the websafe version is hex `996666`. A complement of this color would be `4284185749`, and the grayscale version is `4286282619`.

A 20% lighter version of the original color is `4291602573`, and `4284564525` is the 20% darker color. If you saturate the color by 10%, you get `4287982668`, and if you desaturate by 10%, it is `4287986794`.

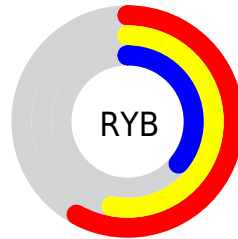
Distribution



Red (58%)

Green (45%)

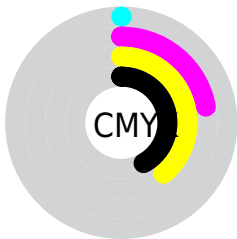
Blue (36%)



Red (58%)

Yellow (53%)

Blue (36%)

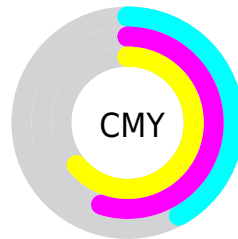


Cyan (0%)

Magenta (22%)

Yellow (39%)

Black (42%)



Cyan (42%)

Magenta (55%)

Yellow (64%)

Brightness & Saturation Gradients

These gradients show how the Android color 4287984731 changes by changing the brightness by 10 percent. The first figure shows a shift by +10% for each color and the second figure -10%.

Similar to the brightness gradients but the following saturation gradients show a change of the Android color 4287984731 by changing the saturation by 10% instead.



4287984731



4287984731

4294967295



4286208835



4291602573



4284564525



4293510056



4282920472



4294959043



4281407744



4294966495



4279828480



4294967292



4278190080



4287984731



4287984731



4287982668



4287986794



4287980349



4287989113

■ 4287978286

■ 4287991176

■ 4287975967

■ 4287993495

■ 4287973905

■ 4287995558

■ 4287971586

■ 4287997876

■ 4287971328

■ 4287999939

■ 4288002258

■ 4288004321

Harmonies

Analogous

The Analogous color harmony consists of three colors that are next to each other on the color wheel.



4288573288



4287984731



4286937687

Triad

The Triadic color harmony groups three colors that are evenly spaced from another and form a triangle on the color wheel.



4287984731



4283139452



4286608792

Complementary

The Complementary color scheme is a pair of colors which are on the opposite of each other on the color wheel.



4287984731



4284185749

Split Complementary

Split-complementary colors differ from the complementary color scheme. The scheme consists of three colors, the original color and two neighbors of the complement color.



4284971934



4287984731



4282680462

Square

The Square scheme is like the rectangle color scheme, but the four colors are evenly spaced on the color wheel.



4287984731



4284318570



4283466138



4287852683

Rectangle

The Rectangle color scheme consists of four colors that form a rectangle on the color wheel.



4287984731



4286152281



4283466138



4286085019

Sweetspot

The Sweet Spot groups the original color and five complimentary colors.



4287984731



4290950571



4287978365



4284569939



4292927712



4284572001

Same Dimension

The Same Dimension uses a secret algorithm to generate beautiful new colors.



4287984731



4290940519



4287991899



4283057731



4287249152



4278846464

Inverse Universe

The Inverse Universe completely reimagines the original color for something new.



4284185749



4284980162



4284178581



4282599242



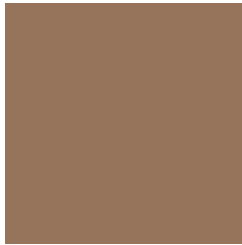
4278210186



4278191626

Previews

White Background



This preview shows how the Android color 4287984731 looks on a white background.

Color Contrast Check

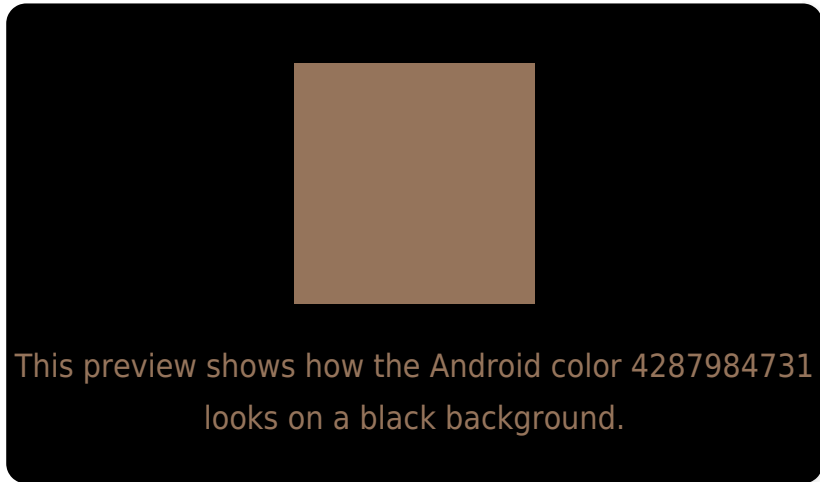
Large Text (above 18pt) WCAG AA ✓ Pass

Any Text WCAG AA ✗ Fail

Large Text (above 18pt) WCAG AAA ✗ Fail

Any Text WCAG AAA ✗ Fail

Black Background



Color Contrast Check

Large Text (above 18pt) WCAG AA ✓ Pass

Any Text WCAG AA ✓ Pass

Large Text (above 18pt) WCAG AAA ✓ Pass

Any Text WCAG AAA × Fail

If you want to check with other color combinations, try the [Color Contrast Checker](#).

Android 4287984731 Background



This preview shows how black text looks on a background with the Android color 4287984731.



This preview shows how white text looks on a background with the Android color 4287984731.

Color Blindness Simulation

Color vision deficiency is a very complex topic, and I could not describe the different causes any better than Wikipedia does, so if you want to learn more, you should check out their [article about color blindness](#).


Dichromacy



Original Color
4287984731

Protanopia
4286806878

Deuteranopia
4287723099



Tritanopia
4288180345

Trichromacy



Original Color
4287984731

Protanomaly
4287264861

Deuteranomaly
4287788379

Tritanomaly
4288115054

Monochromacy



Original Color
4287984731

Achromatopsia
4286282619

Achromatomaly
4286871663

CSS Examples

Text

The CSS property to change the color of the text to Android 4287984731 is called "color". The color property can be set on classes, ids or directly on the HTML element.

This example shows how text in the color `rgb(149, 116, 91)` looks like.

```
.text, #text, p{  
    color:rgb(149, 116, 91)  
}
```

If you want to add a text shadow in that color use the text-shadow property, you can generate a text shadow directly with our [CSS Text Shadow Generator](#).

Here you see how black text with a 4 pixel rgb(149, 116, 91) colored shadow looks like.

```
.shadow{ text-shadow: 4px 4px 2px rgb(149, 116, 91) }
```

Border

The CSS property to change the border of an element to Android 4287984731 is called "border". The border property can be set on classes, ids or directly on the HTML element.

This example shows the color as border, it can be applied via the CSS property "border" or "border-color".

```
.border, #border, table{ border:4px solid rgb(149, 116, 91) }
```

If only the border color should be changed use the property `border-color`.

```
.border{ border-color:rgb(149, 116, 91) }
```

If you want to add a box shadow in that color use:

Here you see how a box with a 4 pixel `rgb(149, 116, 91)` colored shadow looks like.

```
.boxshadow{ -moz-box-shadow:4px 4px 4px  
4px rgb(149, 116, 91); -webkit-box-  
shadow:4px 4px 4px 4px rgb(149, 116, 91);  
box-shadow:4px 4px 4px 4px rgb(149, 116,  
91) }
```

Background

The CSS property to change the background color of an element to Android 4287984731 is called "background". The background property can be set on classes, ids or directly on the HTML element.

```
.background, #background, body{  
background: rgb(149, 116, 91) }
```

If only the background color should be changed can be used:

```
.background{ background-color: rgb(149,  
116, 91) }
```

This example shows the color as background, it is applied via the CSS property "background".

To optimize and compress your CSS code, you can use our [online CSS compressor and optimizer](#) based on csstidy. If you want to create a linear or radial gradient as background or border, check our [CSS Gradient Generator](#).

Hey! You found this booklet interesting? Support Converting Colors with the new Membership Option!

The pro membership hides all ads, plus gives you double the colors in the color bucket, and more awesome pro features!

[Learn more, Memberships starting at \\$2.50/m!](#)

**Follow me
on Twitter!**

@ConvertingColor