

Converting Colors

Android(4288048722)

Have a look what the booklet for
Android(4288048722) contains.

Android(4288048722)	3
<i>Conversions</i>	4
<i>Details</i>	6
<i>Harmonies</i>	11
<i>Previews</i>	23
<i>Color Blindness Simulation</i>	26
<i>CSS Examples</i>	29

Color

Android(4288048722)

Conversions

Conversions Part 1

Format	Color
Hex	966E52
RGB	150, 110, 82
RGB Percent	59%, 43%, 32%
CMY	0.4118, 0.5686, 0.6784
CMYK	0.00, 0.27, 0.45, 0.41
HSL	25°, 29%, 45%
HSV	25°, 45%, 59%
XYZ	19.6766, 18.2451, 10.4672
YIQ	118.7680, 32.8280, -0.2280

Conversions

Conversions Part 2

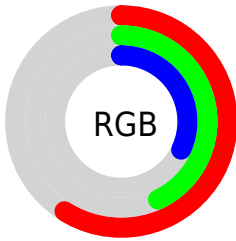
Format	Color
R_{YB}	150, 130, 82
Decimal	9858642
CIE _{Lab}	49.79, 12.20, 21.82
CIE _{LCh}	50, 24.993, 60.790
Yxy	18.2451, 0.4066, 0.3771
Android (android.graphics.Color)	4288048722 (0xFF966E52)
YUV	118.7680, -18.1266, 27.3905
Hunter-Lab	42.7143, 7.4772, 15.3708

Details

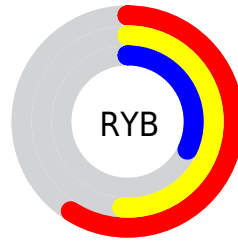
The Android color `4288048722` is a dark color, and the websafe version is hex `996633`. A complement of this color would be `4283595414`, and the grayscale version is `4286019447`.

A 20% lighter version of the original color is `4291732100`, and `4284562981` is the 20% darker color. If you saturate the color by 10%, you get `4288046403`, and if you desaturate by 10%, it is `4288051041`.

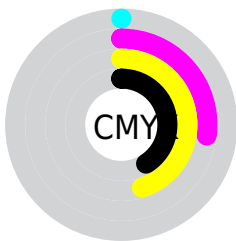
Distribution



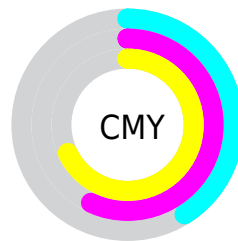
- Red (59%)
- Green (43%)
- Blue (32%)



- Red (59%)
- Yellow (51%)
- Blue (32%)



- Cyan (0%)
- Magenta (27%)
- Yellow (45%)
- Black (41%)



- Cyan (41%)
- Magenta (57%)
- Yellow (68%)

Brightness & Saturation Gradients

These gradients show how the Android color 4288048722 changes by changing the brightness by 10 percent. The first figure shows a shift by +10% for each color and the second figure -10%.

Similar to the brightness gradients but the following saturation gradients show a change of the Android color 4288048722 by changing the saturation by 10% instead.



4288048722



4288048722

4294967295



4286273083



4291732100



4284562981



4293639582



4282918928



4294957241



4281340928



4294964693



4279762945



4294967281



4278190080



4288048722



4288048722



4288046403



4288051041



4288044084



4288053360

■ 4288042021

■ 4288055423

■ 4288039702

■ 4288057742

■ 4288037383

■ 4288060061

■ 4288036352

■ 4288062380

■ 4288064699

■ 4288067018

■ 4288069081

Harmonies

Analogous

The Analogous color harmony consists of three colors that are next to each other on the color wheel.



4288702562



4288048722



4286870860

Triad

The Triadic color harmony groups three colors that are evenly spaced from another and form a triangle on the color wheel.



4288048722



4282155638



4286214555

Complementary

The Complementary color scheme is a pair of colors which are on the opposite of each other on the color wheel.



4288048722



4283595414

Split Complementary

Split-complementary colors differ from the complementary color scheme. The scheme consists of three colors, the original color and two neighbors of the complement color.



4284184737



4288048722



4281237899

Square

The Square scheme is like the rectangle color scheme, but the four colors are evenly spaced on the color wheel.



4288048722



4283793505



4282089115



4287785611

Rectangle

The Rectangle color scheme consists of four colors that form a rectangle on the color wheel.



4288048722



4285954638



4282089115



4285559710

Sweetspot

The Sweet Spot groups the original color and five complimentary colors.



4288048722



4290949799



4288041595



4284569424



4292927712



4284572001

Same Dimension

The Same Dimension uses a secret algorithm to generate beautiful new colors.



4288048722



4290937945



4288057170



4283057731



4287248640



4278846464

Inverse Universe

The Inverse Universe completely reimagines the original color for something new.



4283595414



4284061634



4283586966



4282599242



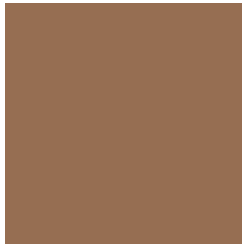
4278210954



4278191626

Previews

White Background



This preview shows how the Android color 4288048722 looks on a white background.

Color Contrast Check

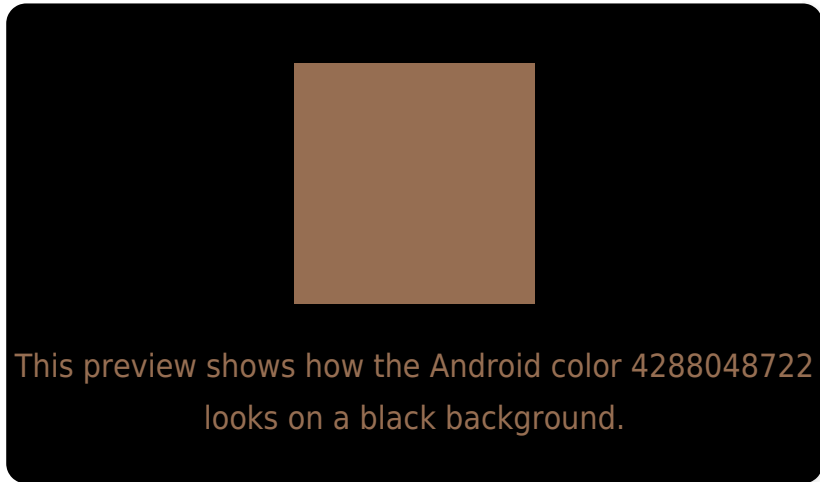
Large Text (above 18pt) WCAG AA ✓ Pass

Any Text WCAG AA ✓ Pass

Large Text (above 18pt) WCAG AAA ✓ Pass

Any Text WCAG AAA × Fail

Black Background



Color Contrast Check

Large Text (above 18pt) WCAG AA ✓ Pass

Any Text WCAG AA ✓ Pass

Large Text (above 18pt) WCAG AAA ✓ Pass

Any Text WCAG AAA × Fail

If you want to check with other color combinations, try the [Color Contrast Checker](#).

Android 4288048722 Background



This preview shows how black text looks on a background with the Android color 4288048722.



This preview shows how white text looks on a background with the Android color 4288048722.

Color Blindness Simulation

Color vision deficiency is a very complex topic, and I could not describe the different causes any better than Wikipedia does, so if you want to learn more, you should check out their [article about color blindness](#).


Dichromacy



Original Color
4288048722

Protanopia
4286609238

Deuteranopia
4287525457



Tritanopia
4288244338

Trichromacy



Original Color
4288048722

Protanomaly
4287132757

Deuteranomaly
4287721809

Tritanomaly
4288179046

Monochromacy



Original Color
4288048722

Achromatopsia
4286019447

Achromatomaly
4286739562

CSS Examples

Text

The CSS property to change the color of the text to Android 4288048722 is called "color". The color property can be set on classes, ids or directly on the HTML element.

This example shows how text in the color `rgb(150, 110, 82)` looks like.

```
.text, #text, p{  
    color:rgb(150, 110, 82)  
}
```

If you want to add a text shadow in that color use the text-shadow property, you can generate a text shadow directly with our [CSS Text Shadow Generator](#).

Here you see how black text with a 4 pixel rgb(150, 110, 82) colored shadow looks like.

```
.shadow{ text-shadow: 4px 4px 2px rgb(150, 110, 82) }
```

Border

The CSS property to change the border of an element to Android 4288048722 is called "border". The border property can be set on classes, ids or directly on the HTML element.

This example shows the color as border, it can be applied via the CSS property "border" or "border-color".

```
.border, #border, table{ border:4px solid rgb(150, 110, 82) }
```

If only the border color should be changed use the property `border-color`.

```
.border{ border-color:rgb(150, 110, 82) }
```

If you want to add a box shadow in that color use:

Here you see how a box with a 4 pixel `rgb(150, 110, 82)` colored shadow looks like.

```
.boxshadow{ -moz-box-shadow:4px 4px 4px  
4px rgb(150, 110, 82); -webkit-box-  
shadow:4px 4px 4px 4px rgb(150, 110, 82);  
box-shadow:4px 4px 4px 4px rgb(150, 110,  
82) }
```

Background

The CSS property to change the background color of an element to Android 4288048722 is called "background". The background property can be set on classes, ids or directly on the HTML element.

```
.background, #background, body{  
background: rgb(150, 110, 82) }
```

If only the background color should be changed can be used:

```
.background{ background-color: rgb(150,  
110, 82) }
```

This example shows the color as background, it is applied via the CSS property "background".

To optimize and compress your CSS code, you can use our [online CSS compressor and optimizer](#) based on csstidy. If you want to create a linear or radial gradient as background or border, check our [CSS Gradient Generator](#).

Hey! You found this booklet interesting? Support Converting Colors with the new Membership Option!

The pro membership hides all ads, plus gives you double the colors in the color bucket, and more awesome pro features!

[Learn more, Memberships starting at \\$2.50/m!](#)

**Follow me
on Twitter!**

@ConvertingColor