

Converting Colors

Android(4288048983)

Have a look what the booklet for
Android(4288048983) contains.

Android(4288048983)	3
<i>Conversions</i>	4
<i>Details</i>	6
<i>Harmonies</i>	11
<i>Previews</i>	23
<i>Color Blindness Simulation</i>	26
<i>CSS Examples</i>	29

Color

Android(4288048983)

Conversions

Conversions Part 1

Format	Color
Hex	966F57
RGB	150, 111, 87
RGB Percent	59%, 44%, 34%
CMY	0.4118, 0.5647, 0.6588
CMYK	0.00, 0.26, 0.42, 0.41
HSL	23°, 27%, 46%
HSV	23°, 42%, 59%
XYZ	19.9824, 18.5410, 11.5424
YIQ	119.9250, 30.9480, 0.8040

Conversions

Conversions Part 2

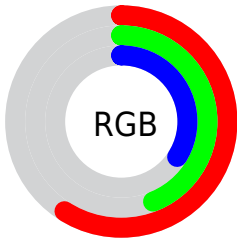
Format	Color
R_{YB}	150, 126, 87
Decimal	9858903
CIE _{Lab}	50.15, 12.20, 19.39
CIE _{LCh}	50, 22.907, 57.829
Yxy	18.5410, 0.3991, 0.3703
Android (android.graphics.Color)	4288048983 (0xFF966F57)
YUV	119.9250, -16.2320, 26.3758
Hunter-Lab	43.0593, 7.4823, 14.2483

Details

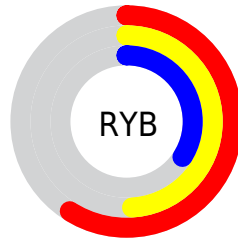
The Android color `4288048983` is a dark color, and the websafe version is hex `996666`. A complement of this color would be `4283924118`, and the grayscale version is `4286085240`.

A 20% lighter version of the original color is `4291732361`, and `4284563241` is the 20% darker color. If you saturate the color by 10%, you get `4288046664`, and if you desaturate by 10%, it is `4288051302`.

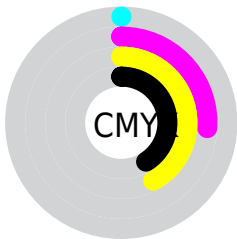
Distribution



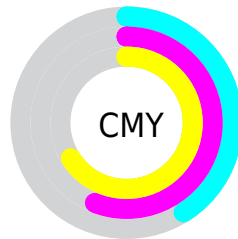
- Red (59%)
- Green (44%)
- Blue (34%)



- Red (59%)
- Yellow (49%)
- Blue (34%)



- Cyan (0%)
- Magenta (26%)
- Yellow (42%)
- Black (41%)



- Cyan (41%)
- Magenta (56%)
- Yellow (66%)

Brightness & Saturation Gradients

These gradients show how the Android color 4288048983 changes by changing the brightness by 10 percent. The first figure shows a shift by +10% for each color and the second figure -10%.

Similar to the brightness gradients but the following saturation gradients show a change of the Android color 4288048983 by changing the saturation by 10% instead.



4288048983



4288048983

4294967295



4286273344



4291732361



4284563241



4293574307



4282919188



4294957758



4281406464



4294964954



4279828480



4294967287



4278190080



4288048983



4288048983



4288046664



4288051302



4288044089



4288053877

 4288041770

 4288056196

 4288039451

 4288058515

 4288037132

 4288060834

 4288035072

 4288063409

 4288065728

 4288068047

 4288070622

Harmonies

Analogous

The Analogous color harmony consists of three colors that are next to each other on the color wheel.



4288572006



4288048983



4287002192

Triad

The Triadic color harmony groups three colors that are evenly spaced from another and form a triangle on the color wheel.



4288048983



4282810997



4286083994

Complementary

The Complementary color scheme is a pair of colors which are on the opposite of each other on the color wheel.



4288048983



4283924118

Split Complementary

Split-complementary colors differ from the complementary color scheme. The scheme consists of three colors, the original color and two neighbors of the complement color.



4284250782



4288048983



4281959049

Square

The Square scheme is like the rectangle color scheme, but the four colors are evenly spaced on the color wheel.



4288048983



4284186722



4282548120



4287589516

Rectangle

The Rectangle color scheme consists of four colors that form a rectangle on the color wheel.



4288048983



4286151250



4282548120



4285494684

Sweetspot

The Sweet Spot groups the original color and five complimentary colors.



4288048983



4290949801



4288042879



4284569425



4292927712



4284572001

Same Dimension

The Same Dimension uses a secret algorithm to generate beautiful new colors.



4288048983



4290938465



4288056919



4283057475



4287247360



4278846464

Inverse Universe

The Inverse Universe completely reimagines the original color for something new.



4283924118



4284587458



4283916182



4282599242



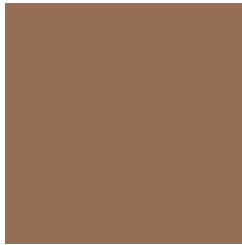
4278211978



4278191626

Previews

White Background



This preview shows how the Android color 4288048983 looks on a white background.

Color Contrast Check

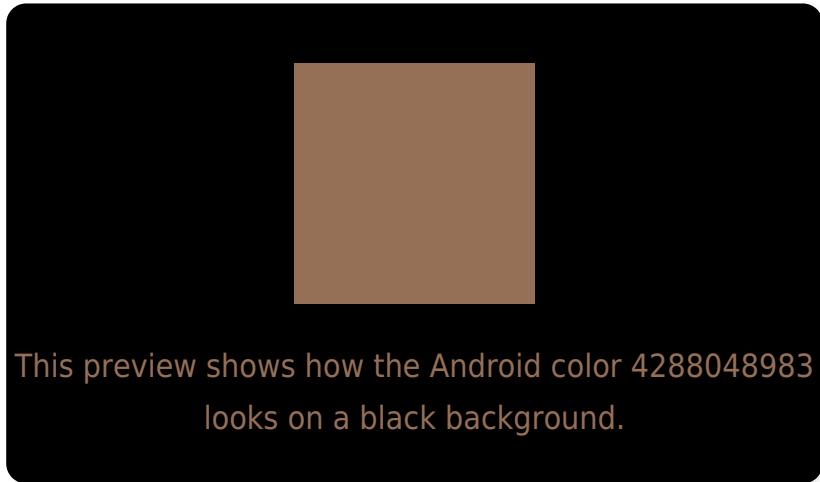
Large Text (above 18pt) WCAG AA ✓ Pass

Any Text WCAG AA ✗ Fail

Large Text (above 18pt) WCAG AAA ✗ Fail

Any Text WCAG AAA ✗ Fail

Black Background



Color Contrast Check

Large Text (above 18pt) WCAG AA ✓ Pass

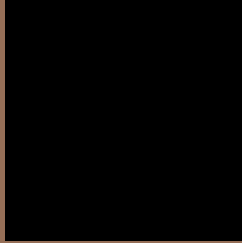
Any Text WCAG AA ✓ Pass

Large Text (above 18pt) WCAG AAA ✓ Pass

Any Text WCAG AAA × Fail

If you want to check with other color combinations, try the [Color Contrast Checker](#).

Android 4288048983 Background



This preview shows how black text looks on a background with the Android color 4288048983.



This preview shows how white text looks on a background with the Android color 4288048983.

Color Blindness Simulation

Color vision deficiency is a very complex topic, and I could not describe the different causes any better than Wikipedia does, so if you want to learn more, you should check out their [article about color blindness](#).

Dichromacy



Original Color
4288048983

Protanopia
4286609243

Deuteranopia
4287525718

Trichromacy



Original Color
4288048983

Protanomaly
4287132762

Deuteranomaly
4287722070

Tritanomaly
4288179305

Monochromacy



Original Color
4288048983

Achromatopsia
4286085240

Achromatomaly
4286805356

CSS Examples

Text

The CSS property to change the color of the text to Android 4288048983 is called "color". The color property can be set on classes, ids or directly on the HTML element.

This example shows how text in the color `rgb(150, 111, 87)` looks like.

```
.text, #text, p{  
    color:rgb(150, 111, 87)  
}
```

If you want to add a text shadow in that color use the text-shadow property, you can generate a text shadow directly with our [CSS Text Shadow Generator](#).

Here you see how black text with a 4 pixel rgb(150, 111, 87) colored shadow looks like.

```
.shadow{ text-shadow: 4px 4px 2px rgb(150, 111, 87) }
```

Border

The CSS property to change the border of an element to Android 4288048983 is called "border". The border property can be set on classes, ids or directly on the HTML element.

This example shows the color as border, it can be applied via the CSS property "border" or "border-color".

```
.border, #border, table{ border:4px solid rgb(150, 111, 87) }
```

If only the border color should be changed use the property `border-color`.

```
.border{ border-color:rgb(150, 111, 87) }
```

If you want to add a box shadow in that color use:

Here you see how a box with a 4 pixel `rgb(150, 111, 87)` colored shadow looks like.

```
.boxshadow{ -moz-box-shadow:4px 4px 4px  
4px rgb(150, 111, 87); -webkit-box-  
shadow:4px 4px 4px 4px rgb(150, 111, 87);  
box-shadow:4px 4px 4px 4px rgb(150, 111,  
87) }
```

Background

The CSS property to change the background color of an element to Android 4288048983 is called "background". The background property can be set on classes, ids or directly on the HTML element.

```
.background, #background, body{  
background: rgb(150, 111, 87) }
```

If only the background color should be changed can be used:

```
.background{ background-color: rgb(150,  
111, 87) }
```

This example shows the color as background, it is applied via the CSS property "background".

To optimize and compress your CSS code, you can use our [online CSS compressor and optimizer](#) based on csstidy. If you want to create a linear or radial gradient as background or border, check our [CSS Gradient Generator](#).

Hey! You found this booklet interesting? Support Converting Colors with the new Membership Option!

The pro membership hides all ads, plus gives you double the colors in the color bucket, and more awesome pro features!

[Learn more, Memberships starting at \\$2.50/m!](#)

**Follow me
on Twitter!**

@ConvertingColor