

# Converting Colors

Android(4288048984)

Have a look what the booklet for  
Android(4288048984) contains.

<b>Android(4288048984)</b> .....	3
<i><b>Conversions</b></i> .....	4
<i><b>Details</b></i> .....	6
<i><b>Harmonies</b></i> .....	11
<i><b>Previews</b></i> .....	23
<i><b>Color Blindness Simulation</b></i> .....	26
<i><b>CSS Examples</b></i> .....	29

# Color

**Android(4288048984)**

# Conversions

## Conversions Part 1

<b>Format</b>	<b>Color</b>
Hex	966F58
RGB	150, 111, 88
RGB Percent	59%, 44%, 35%
CMY	0.4118, 0.5647, 0.6549
CMYK	0.00, 0.26, 0.41, 0.41
HSL	22°, 26%, 47%
HSV	22°, 41%, 59%
XYZ	20.0236, 18.5575, 11.7591
YIQ	120.0390, 30.6270, 1.1150

# Conversions

## Conversions Part 2

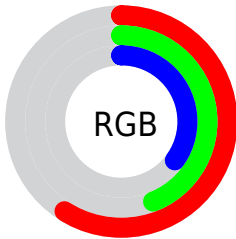
<b>Format</b>	<b>Color</b>
<b>R<sub>YB</sub></b>	150, 125, 88
Decimal	9858904
CIE Lab	50.17, 12.32, 18.83
CIE LCh	50, 22.504, 56.819
Yxy	18.5575, 0.3978, 0.3686
Android (android.graphics.Color)	4288048984 (0xFF966F58)
YUV	120.0390, -15.7952, 26.2758
Hunter-Lab	43.0784, 7.5826, 13.9705

# Details

The Android color `4288048984` is a dark color, and the websafe version is hex `996666`. A complement of this color would be `4283989910`, and the grayscale version is `4286085240`.

A 20% lighter version of the original color is `4291732362`, and `4284563242` is the 20% darker color. If you saturate the color by 10%, you get `4288046665`, and if you desaturate by 10%, it is `4288051303`.

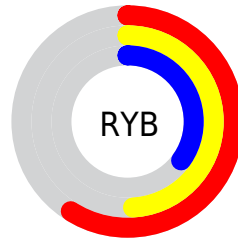
# Distribution



Red (59%)

Green (44%)

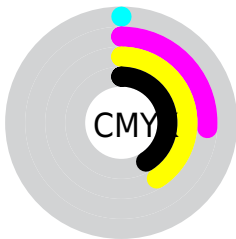
Blue (35%)



Red (59%)

Yellow (49%)

Blue (35%)

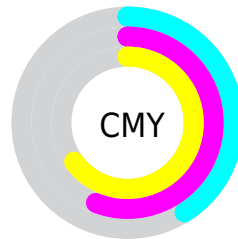


Cyan (0%)

Magenta (26%)

Yellow (41%)

Black (41%)



Cyan (41%)

Magenta (56%)

Yellow (65%)

# Brightness & Saturation Gradients

These gradients show how the Android color 4288048984 changes by changing the brightness by 10 percent. The first figure shows a shift by +10% for each color and the second figure -10%.

Similar to the brightness gradients but the following saturation gradients show a change of the Android color 4288048984 by changing the saturation by 10% instead.





4288048984



4288048984

4294967295



4286273345



4291732362



4284563242



4293574308



4282919189



4294957760



4281406464



4294964955



4279894016



4294967288



4278190080



4288048984



4288048984



4288046665



4288051303



4288044090



4288053878

■ 4288041771

■ 4288056197

■ 4288039196

■ 4288058772

■ 4288036877

■ 4288061091

■ 4288034816

■ 4288063666

■ 4288065985

■ 4288068304

■ 4288070879

# Harmonies

## Analogous

The Analogous color harmony consists of three colors that are next to each other on the color wheel.



4288572007



4288048984



4287067473

# Triad

The Triadic color harmony groups three colors that are evenly spaced from another and form a triangle on the color wheel.



4288048984



4282942069



4286018457

# Complementary

The Complementary color scheme is a pair of colors which are on the opposite of each other on the color wheel.



4288048984



4283989910

# Split Complementary

Split-complementary colors differ from the complementary color scheme. The scheme consists of three colors, the original color and two neighbors of the complement color.



4284250781



4288048984



4282090120

# Square

The Square scheme is like the rectangle color scheme, but the four colors are evenly spaced on the color wheel.



4288048984



4284317794



4282613655



4287524237

# Rectangle

The Rectangle color scheme consists of four colors that form a rectangle on the color wheel.



4288048984



4286216786



4282613655



4285429148



# Sweetspot

The Sweet Spot groups the original color and five complimentary colors.



4288048984



4290950059



4288043135



4284569683



4292927712



4284572001



# Same Dimension

The Same Dimension uses a secret algorithm to generate beautiful new colors.



4288048984



4290938209



4288056920



4283057475



4287247104



4278846464



# Inverse Universe

The Inverse Universe completely reimagines the original color for something new.



4283989910



4284587714



4283981974



4282599242



4278212490

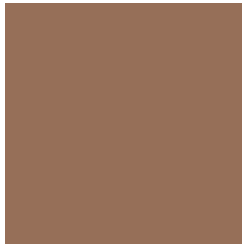


4278191626



# Previews

## White Background



This preview shows how the Android color 4288048984 looks on a white background.

## Color Contrast Check

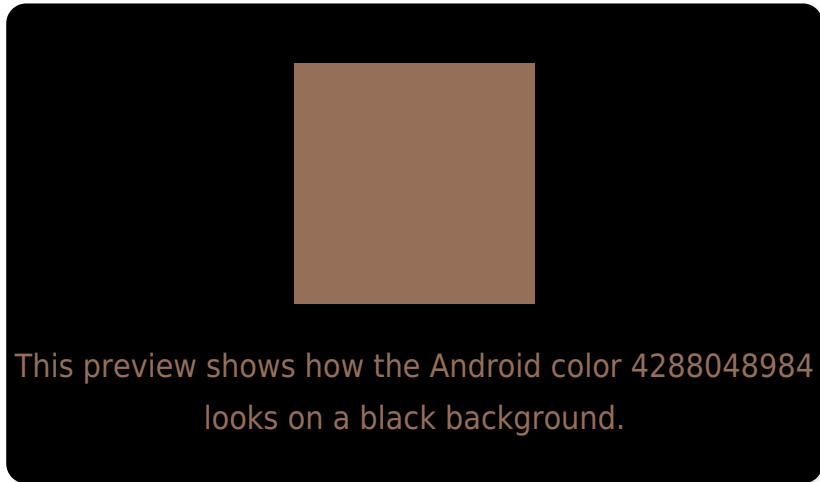
Large Text (above 18pt) WCAG AA ✓ Pass

Any Text WCAG AA ✗ Fail

Large Text (above 18pt) WCAG AAA ✗ Fail

Any Text WCAG AAA ✗ Fail

# Black Background



## Color Contrast Check

Large Text (above 18pt) WCAG AA ✓ Pass

Any Text WCAG AA ✓ Pass

Large Text (above 18pt) WCAG AAA ✓ Pass

Any Text WCAG AAA × Fail

If you want to check with other color combinations, try the [Color Contrast Checker](#).



# Android 4288048984 Background



This preview shows how black text looks on a background with the Android color 4288048984.



This preview shows how white text looks on a background with the Android color 4288048984.

# Color Blindness Simulation

Color vision deficiency is a very complex topic, and I could not describe the different causes any better than Wikipedia does, so if you want to learn more, you should check out their [article about color blindness](#).

## Dichromacy



**Original Color**  
4288048984

**Protanopia**  
4286609244

**Deuteranopia**  
4287525719



# Trichromacy



**Original Color**  
4288048984

**Protanomaly**  
4287132763

**Deuteranomaly**  
4287722071

**Tritanomaly**  
4288179305

# Monochromacy



**Original Color**  
4288048984

**Achromatopsia**  
4286085240

**Achromatomaly**  
4286805356

# CSS Examples

## Text

The CSS property to change the color of the text to Android 4288048984 is called "color". The color property can be set on classes, ids or directly on the HTML element.

This example shows how text in the color `rgb(150, 111, 88)` looks like.

```
.text, #text, p{  
    color:rgb(150, 111, 88)  
}
```

If you want to add a text shadow in that color use the text-shadow property, you can generate a text shadow directly with our [CSS Text Shadow Generator](#).

Here you see how black text with a 4 pixel rgb(150, 111, 88) colored shadow looks like.

```
.shadow{ text-shadow: 4px 4px 2px rgb(150, 111, 88) }
```

## Border

The CSS property to change the border of an element to Android 4288048984 is called "border". The border property can be set on classes, ids or directly on the HTML element.

This example shows the color as border, it can be applied via the CSS property "border" or "border-color".

```
.border, #border, table{ border:4px solid rgb(150, 111, 88) }
```

If only the border color should be changed use the property `border-color`.

```
.border{ border-color:rgb(150, 111, 88) }
```

If you want to add a box shadow in that color use:

Here you see how a box with a 4 pixel `rgb(150, 111, 88)` colored shadow looks like.

```
.boxshadow{ -moz-box-shadow:4px 4px 4px  
4px rgb(150, 111, 88); -webkit-box-  
shadow:4px 4px 4px 4px rgb(150, 111, 88);  
box-shadow:4px 4px 4px 4px rgb(150, 111,  
88) }
```

# Background

The CSS property to change the background color of an element to Android 4288048984 is called "background". The background property can be set on classes, ids or directly on the HTML element.

```
.background, #background, body{  
background: rgb(150, 111, 88) }
```

If only the background color should be changed can be used:

```
.background{ background-color: rgb(150,  
111, 88) }
```

This example shows the color as background, it is applied via the CSS property "background".

To optimize and compress your CSS code, you can use our [online CSS compressor and optimizer](#) based on csstidy. If you want to create a linear or radial gradient as background or border, check our [CSS Gradient Generator](#).



Hey! You found this booklet interesting? Support Converting Colors with the new Membership Option!

The pro membership hides all ads, plus gives you double the colors in the color bucket, and more awesome pro features!

**[Learn more, Memberships starting at \\$2.50/m!](#)**

**Follow me  
on Twitter!**

@ConvertingColor