

Converting Colors

Android(4288050012)

Have a look what the booklet for
Android(4288050012) contains.

Android(4288050012)	3
<i>Conversions</i>	4
<i>Details</i>	6
<i>Harmonies</i>	11
<i>Previews</i>	23
<i>Color Blindness Simulation</i>	26
<i>CSS Examples</i>	29

Color

Android(4288050012)

Conversions

Conversions Part 1

Format	Color
Hex	96735C
RGB	150, 115, 92
RGB Percent	59%, 45%, 36%
CMY	0.4118, 0.5490, 0.6392
CMYK	0.00, 0.23, 0.39, 0.41
HSL	24°, 24%, 47%
HSV	24°, 39%, 59%
XYZ	20.6402, 19.5182, 12.8047
YIQ	122.8430, 28.2430, 0.2670

Conversions

Conversions Part 2

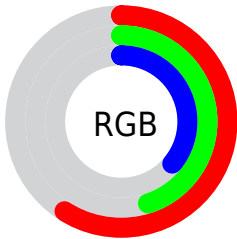
Format	Color
RYB	150, 130, 92
Decimal	9859932
CIELab	51.29, 10.50, 18.03
CIELCh	51, 20.862, 59.781
Yxy	19.5182, 0.3897, 0.3685
Android (android.graphics.Color)	4288050012 (0xFF96735C)
YUV	122.8430, -15.2056, 23.8167
Hunter-Lab	44.1794, 6.0794, 13.7413

Details

The Android color `4288050012` is a dark color, and the websafe version is hex `996666`. A complement of this color would be `4284252054`, and the grayscale version is `4286282619`.

A 20% lighter version of the original color is `4291667854`, and `4284629806` is the 20% darker color. If you saturate the color by 10%, you get `4288047693`, and if you desaturate by 10%, it is `4288052331`.

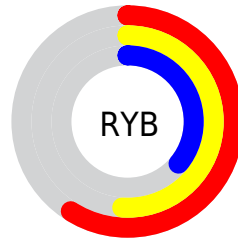
Distribution



Red (59%)

Green (45%)

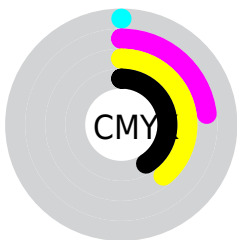
Blue (36%)



Red (59%)

Yellow (51%)

Blue (36%)

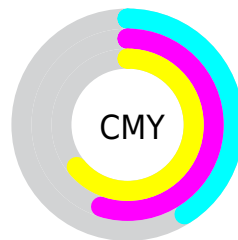


Cyan (0%)

Magenta (23%)

Yellow (39%)

Black (41%)



Cyan (41%)

Magenta (55%)

Yellow (64%)

Brightness & Saturation Gradients

These gradients show how the Android color 4288050012 changes by changing the brightness by 10 percent. The first figure shows a shift by +10% for each color and the second figure -10%.

Similar to the brightness gradients but the following saturation gradients show a change of the Android color 4288050012 by changing the saturation by 10% instead.



4288050012



4288050012

4294967295



4286274116



4291667854



4284629806



4293575337



4282985753



4294958788



4281473024



4294966240



4279894016

4294967293



4278190080



4288050012



4288050012



4288047693



4288052331



4288045374



4288054650

■ 4288043055

■ 4288056969

■ 4288040736

■ 4288059288

■ 4288038417

■ 4288061607

■ 4288036098

■ 4288063926

■ 4288035584

■ 4288066245

■ 4288068564

■ 4288070883

Harmonies

Analogous

The Analogous color harmony consists of three colors that are next to each other on the color wheel.



4288573033



4288050012



4287068503

Triad

The Triadic color harmony groups three colors that are evenly spaced from another and form a triangle on the color wheel.



4288050012



4283270265



4286412441

Complementary

The Complementary color scheme is a pair of colors which are on the opposite of each other on the color wheel.



4288050012



4284252054

Split Complementary

Split-complementary colors differ from the complementary color scheme. The scheme consists of three colors, the original color and two neighbors of the complement color.



4284775581



4288050012



4282680459

Square

The Square scheme is like the rectangle color scheme, but the four colors are evenly spaced on the color wheel.



4288050012



4284514920



4283269528



4287721612

Rectangle

The Rectangle color scheme consists of four colors that form a rectangle on the color wheel.



4288050012



4286283096



4283269528



4285888668

Sweetspot

The Sweet Spot groups the original color and five complimentary colors.



4288050012



4290950315



4288044160



4284569939



4292927712



4284572001

Same Dimension

The Same Dimension uses a secret algorithm to generate beautiful new colors.



4288050012



4290940009



4288057180



4283057475



4287248128



4278846464

Inverse Universe

The Inverse Universe completely reimagines the original color for something new.



4284252054



4285112002



4284244886



4282599242



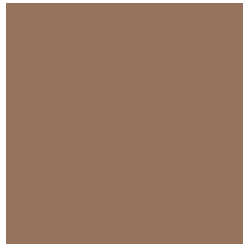
4278211466



4278191626

Previews

White Background



This preview shows how the Android color 4288050012 looks on a white background.

Color Contrast Check

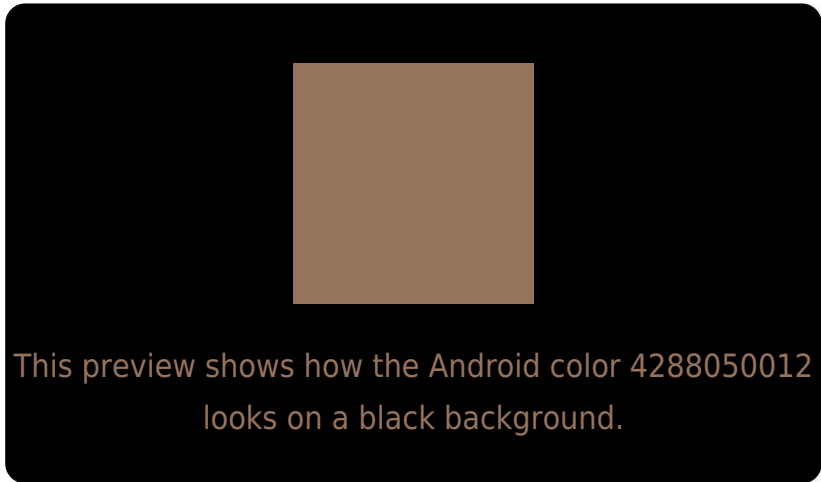
Large Text (above 18pt) WCAG AA ✓ Pass

Any Text WCAG AA ✗ Fail

Large Text (above 18pt) WCAG AAA ✗ Fail

Any Text WCAG AAA ✗ Fail

Black Background



Color Contrast Check

Large Text (above 18pt) WCAG AA ✓ Pass

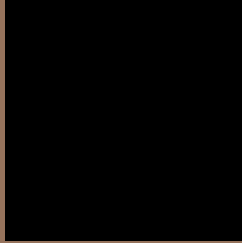
Any Text WCAG AA ✓ Pass

Large Text (above 18pt) WCAG AAA ✓ Pass

Any Text WCAG AAA × Fail

If you want to check with other color combinations, try the [Color Contrast Checker](#).

Android 4288050012 Background



This preview shows how black text looks on a background with the Android color 4288050012.



This preview shows how white text looks on a background with the Android color 4288050012.

Color Blindness Simulation

Color vision deficiency is a very complex topic, and I could not describe the different causes any better than Wikipedia does, so if you want to learn more, you should check out their [article about color blindness](#).

Dichromacy



Original Color

4288050012

Protanopia

4286806623

Deuteranopia

4287657308

Trichromacy



Original Color
4288050012

Protanomaly
4287264606

Deuteranomaly
4287788124

Tritanomaly
4288180334

Monochromacy



Original Color
4288050012

Achromatopsia
4286282619

Achromatomaly
4286937200

CSS Examples

Text

The CSS property to change the color of the text to Android 4288050012 is called "color". The color property can be set on classes, ids or directly on the HTML element.

This example shows how text in the color `rgb(150, 115, 92)` looks like.

```
.text, #text, p{  
    color:rgb(150, 115, 92)  
}
```

If you want to add a text shadow in that color use the text-shadow property, you can generate a text shadow directly with our [CSS Text Shadow Generator](#).

Here you see how black text with a 4 pixel rgb(150, 115, 92) colored shadow looks like.

```
.shadow{ text-shadow: 4px 4px 2px rgb(150, 115, 92) }
```

Border

The CSS property to change the border of an element to Android 4288050012 is called "border". The border property can be set on classes, ids or directly on the HTML element.

This example shows the color as border, it can be applied via the CSS property "border" or "border-color".

```
.border, #border, table{ border:4px solid rgb(150, 115, 92) }
```

If only the border color should be changed use the property `border-color`.

```
.border{ border-color:rgb(150, 115, 92) }
```

If you want to add a box shadow in that color use:

Here you see how a box with a 4 pixel `rgb(150, 115, 92)` colored shadow looks like.

```
.boxshadow{ -moz-box-shadow:4px 4px 4px  
4px rgb(150, 115, 92); -webkit-box-  
shadow:4px 4px 4px 4px rgb(150, 115, 92);  
box-shadow:4px 4px 4px 4px rgb(150, 115,  
92) }
```

Background

The CSS property to change the background color of an element to Android 4288050012 is called "background". The background property can be set on classes, ids or directly on the HTML element.

```
.background, #background, body{  
background: rgb(150, 115, 92) }
```

If only the background color should be changed can be used:

```
.background{ background-color: rgb(150,  
115, 92) }
```

This example shows the color as background, it is applied via the CSS property "background".

To optimize and compress your CSS code, you can use our [online CSS compressor and optimizer](#) based on csstidy. If you want to create a linear or radial gradient as background or border, check our [CSS Gradient Generator](#).

Hey! You found this booklet interesting? Support Converting Colors with the new Membership Option!

The pro membership hides all ads, plus gives you double the colors in the color bucket, and more awesome pro features!

[Learn more, Memberships starting at \\$2.50/m!](#)

**Follow me
on Twitter!**

@ConvertingColor