

Converting Colors

Android(4288052331)

Have a look what the booklet for
Android(4288052331) contains.

Android(4288052331)	3
<i>Conversions</i>	4
<i>Details</i>	6
<i>Harmonies</i>	11
<i>Previews</i>	23
<i>Color Blindness Simulation</i>	26
<i>CSS Examples</i>	29

Color

Android(4288052331)

Conversions

Conversions Part 1

Format	Color
Hex	967C6B
RGB	150, 124, 107
RGB Percent	59%, 49%, 42%
CMY	0.4118, 0.5137, 0.5804
CMYK	0.00, 0.17, 0.29, 0.41
HSL	24°, 17%, 50%
HSV	24°, 29%, 59%
XYZ	22.4392, 21.9609, 16.9661
YIQ	129.8360, 20.9530, 0.2250

Conversions

Conversions Part 2

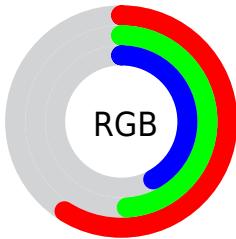
Format	Color
RYB	150, 135, 107
Decimal	9862251
CIELab	53.99, 7.36, 13.04
CIELCh	54, 14.977, 60.553
Yxy	21.9609, 0.3657, 0.3579
Android (android.graphics.Color)	4288052331 (0xFF967C6B)
YUV	129.8360, -11.2581, 17.6838
Hunter-Lab	46.8624, 3.4620, 11.3383

Details

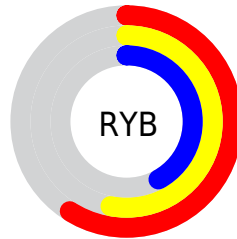
The Android color `4288052331` is a dark color, and the websafe version is hex `996666`. A complement of this color would be `4285236630`, and the grayscale version is `4286743170`.

A 20% lighter version of the original color is `4291670430`, and `4284631868` is the 20% darker color. If you saturate the color by 10%, you get `4288050012`, and if you desaturate by 10%, it is `4288054650`.

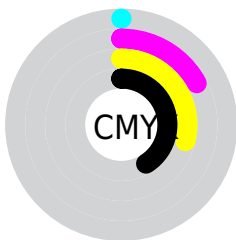
Distribution



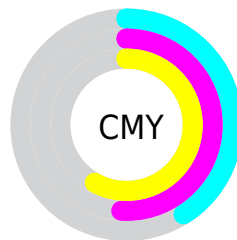
- Red (59%)
- Green (49%)
- Blue (42%)



- Red (59%)
- Yellow (53%)
- Blue (42%)



- Cyan (0%)
- Magenta (17%)
- Yellow (29%)
- Black (41%)



- Cyan (41%)
- Magenta (51%)
- Yellow (58%)

Brightness & Saturation Gradients

These gradients show how the Android color 4288052331 changes by changing the brightness by 10 percent. The first figure shows a shift by +10% for each color and the second figure -10%.

Similar to the brightness gradients but the following saturation gradients show a change of the Android color 4288052331 by changing the saturation by 10% instead.



4288052331



4288052331

4294967295



4286341971



4291670430



4284631868



4293512377



4283053350



4294961365



4281474833



4294967281



4280158208



4278190080



4288052331



4288052331



4288050012



4288054650



4288047693



4288056969

■ 4288045374

■ 4288059288

■ 4288043055

■ 4288061607

■ 4288040736

■ 4288063926

■ 4288038417

■ 4288066245

■ 4288036098

■ 4288068564

■ 4288035584

■ 4288071139

■ 4288073458

Harmonies

Analogous

The Analogous color harmony consists of three colors that are next to each other on the color wheel.



4288444788



4288052331



4287332455

Triad

The Triadic color harmony groups three colors that are evenly spaced from another and form a triangle on the color wheel.



4288052331



4284647809



4286873239

Complementary

The Complementary color scheme is a pair of colors which are on the opposite of each other on the color wheel.



4288052331



4285236630

Split Complementary

Split-complementary colors differ from the complementary color scheme. The scheme consists of three colors, the original color and two neighbors of the complement color.



4285760155



4288052331



4284385422

Square

The Square scheme is like the rectangle color scheme, but the four colors are evenly spaced on the color wheel.



4288052331



4285433716



4284778135



4287789710

Rectangle

The Rectangle color scheme consists of four colors that form a rectangle on the color wheel.



4288052331



4286743401



4284778135



4286480281

Sweetspot

The Sweet Spot groups the original color and five complimentary colors.



4288052331



4290951088



4288048006



4284570198



4292927712



4284572001

Same Dimension

The Same Dimension uses a secret algorithm to generate beautiful new colors.



4288052331



4290943616



4288057707



4283057475



4287247872



4278846464

Inverse Universe

The Inverse Universe completely reimagines the original color for something new.



4285236630



4286621890



4285231254



4282599242



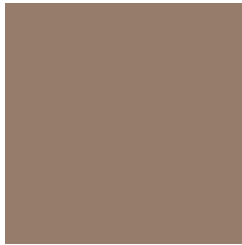
4278211466



4278191626

Previews

White Background



This preview shows how the Android color 4288052331 looks on a white background.

Color Contrast Check

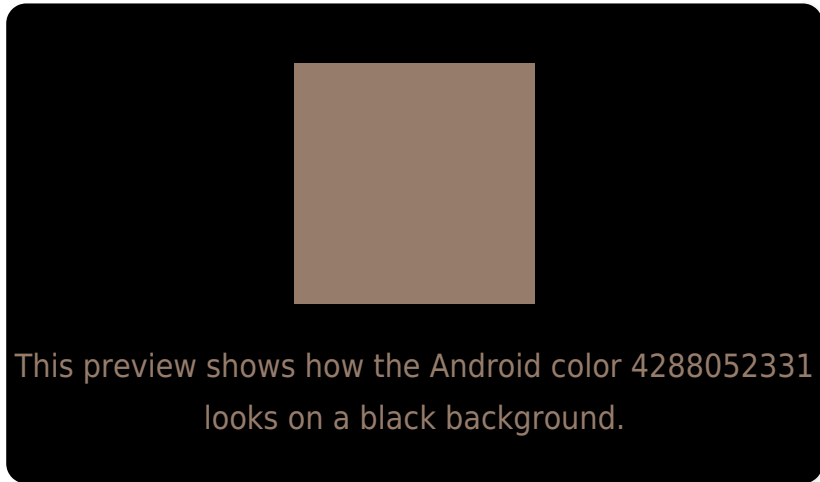
Large Text (above 18pt) WCAG AA ✓ Pass

Any Text WCAG AA ✗ Fail

Large Text (above 18pt) WCAG AAA ✗ Fail

Any Text WCAG AAA ✗ Fail

Black Background



Color Contrast Check

Large Text (above 18pt) WCAG AA ✓ Pass

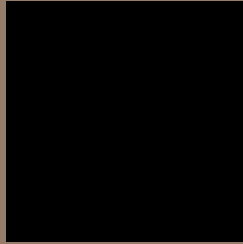
Any Text WCAG AA ✓ Pass

Large Text (above 18pt) WCAG AAA ✓ Pass

Any Text WCAG AAA × Fail

If you want to check with other color combinations, try the [Color Contrast Checker](#).

Android 4288052331 Background



This preview shows how black text looks on a background with the Android color 4288052331.



This preview shows how white text looks on a background with the Android color 4288052331.

Color Blindness Simulation

Color vision deficiency is a very complex topic, and I could not describe the different causes any better than Wikipedia does, so if you want to learn more, you should check out their [article about color blindness](#).


Dichromacy



Original Color
4288052331

Protanopia
4287136109

Deuteranopia
4287986795



Tritanopia
4288248194

Trichromacy



Original Color
4288052331

Protanomaly
4287463276

Deuteranomaly
4287986795

Tritanomaly
4288182906

Monochromacy



Original Color
4288052331

Achromatopsia
4286743170

Achromatomaly
4287201402

CSS Examples

Text

The CSS property to change the color of the text to Android 4288052331 is called "color". The color property can be set on classes, ids or directly on the HTML element.

This example shows how text in the color `rgb(150, 124, 107)` looks like.

```
.text, #text, p{  
    color:rgb(150, 124, 107)  
}
```

If you want to add a text shadow in that color use the text-shadow property, you can generate a text shadow directly with our [CSS Text Shadow Generator](#).

Here you see how black text with a 4 pixel rgb(150, 124, 107) colored shadow looks like.

```
.shadow{ text-shadow: 4px 4px 2px rgb(150, 124, 107) }
```

Border

The CSS property to change the border of an element to Android 4288052331 is called "border". The border property can be set on classes, ids or directly on the HTML element.

This example shows the color as border, it can be applied via the CSS property "border" or "border-color".

```
.border, #border, table{ border:4px solid rgb(150, 124, 107) }
```

If only the border color should be changed use the property border-color.

```
.border{ border-color:rgb(150, 124, 107) }
```

If you want to add a box shadow in that color use:

Here you see how a box with a 4 pixel rgb(150, 124, 107) colored shadow looks like.

```
.boxshadow{ -moz-box-shadow:4px 4px 4px  
4px rgb(150, 124, 107); -webkit-box-  
shadow:4px 4px 4px 4px rgb(150, 124, 107);  
box-shadow:4px 4px 4px 4px rgb(150, 124,  
107) }
```

Background

The CSS property to change the background color of an element to Android 4288052331 is called "background". The background property can be set on classes, ids or directly on the HTML element.

```
.background, #background, body{  
background: rgb(150, 124, 107) }
```

If only the background color should be changed can be used:

```
.background{ background-color: rgb(150,  
124, 107) }
```

This example shows the color as background, it is applied via the CSS property "background".

To optimize and compress your CSS code, you can use our [online CSS compressor and optimizer](#) based on csstidy. If you want to create a linear or radial gradient as background or border, check our [CSS Gradient Generator](#).

Hey! You found this booklet interesting? Support Converting Colors with the new Membership Option!

The pro membership hides all ads, plus gives you double the colors in the color bucket, and more awesome pro features!

[Learn more, Memberships starting at \\$2.50/m!](#)

**Follow me
on Twitter!**

@ConvertingColor