

# Converting Colors

Android(4288112209)

Have a look what the booklet for  
Android(4288112209) contains.

<b>Android(4288112209)</b> .....	3
<b><i>Conversions</i></b> .....	4
<b><i>Details</i></b> .....	6
<b><i>Harmonies</i></b> .....	11
<b><i>Previews</i></b> .....	23
<b><i>Color Blindness Simulation</i></b> .....	26
<b><i>CSS Examples</i></b> .....	29

**Color**

**Android(4288112209)**

# Conversions

## Conversions Part 1

<b>Format</b>	<b>Color</b>
Hex	976651
RGB	151, 102, 81
RGB Percent	59%, 40%, 32%
CMY	0.4078, 0.6000, 0.6824
CMYK	0.00, 0.32, 0.46, 0.41
HSL	18°, 30%, 45%
HSV	18°, 46%, 59%
XYZ	18.9991, 16.6761, 10.0020
YIQ	114.2570, 35.9450, 3.8570

# Conversions

## Conversions Part 2

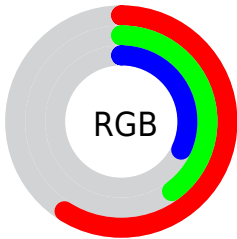
Format	Color
<b>RYB</b>	151, 111, 81
Decimal	9922129
CIELab	47.85, 17.14, 19.84
CIELCh	48, 26.219, 49.187
Yxy	16.6761, 0.4159, 0.3651
Android (android.graphics.Color)	4288112209 (0xFF976651)
YUV	114.2570, -16.3957, 32.2236
Hunter-Lab	40.8364, 11.5831, 14.0636

# Details

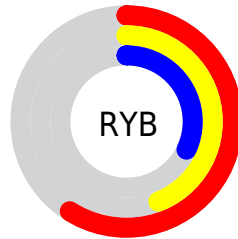
The Android color **4288112209** is a dark color, and the websafe version is hex **996666**. A complement of this color would be **4283531927**, and the grayscale version is **4285690482**.

A 20% lighter version of the original color is **4291795330**, and **4284626724** is the 20% darker color. If you saturate the color by 10%, you get **4288109378**, and if you desaturate by 10%, it is **4288115040**.

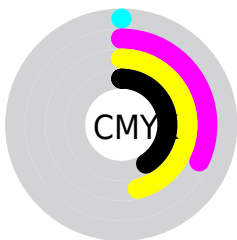
# Distribution



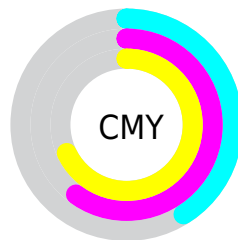
- Red (59%)
- Green (40%)
- Blue (32%)



- Red (59%)
- Yellow (44%)
- Blue (32%)



- Cyan (0%)
- Magenta (32%)
- Yellow (46%)
- Black (41%)



- Cyan (41%)
- Magenta (60%)
- Yellow (68%)

# Brightness & Saturation Gradients

These gradients show how the Android color 4288112209 changes by changing the brightness by 10 percent. The first figure shows a shift by +10% for each color and the second figure -10%.

Similar to the brightness gradients but the following saturation gradients show a change of the Android color 4288112209 by changing the saturation by 10% instead.





4288112209



4288112209

4294967295



4286336570



4291795330



4284626724



4293702813



4282917135



4294955192



4281338880



4294962387



4279369728



4294967280



4278190080



4288112209



4288112209



4288109378



4288115040



4288106803



4288117615

■ 4288103972

■ 4288120446

■ 4288101397

■ 4288123021

■ 4288098565

■ 4288125852

■ 4288097536

■ 4288128428

■ 4288131259

■ 4288134090

■ 4288136665

# Harmonies

## Analogous

The Analogous color harmony consists of three colors that are next to each other on the color wheel.



4288504164



4288112209



4287130950

# Triad

The Triadic color harmony groups three colors that are evenly spaced from another and form a triangle on the color wheel.



4288112209



4282219881



4285099931

# Complementary

The Complementary color scheme is a pair of colors which are on the opposite of each other on the color wheel.



4288112209



4283531927

# Split Complementary

Split-complementary colors differ from the complementary color scheme. The scheme consists of three colors, the original color and two neighbors of the complement color.



4282742429



4288112209



4280581503

# Square

The Square scheme is like the rectangle color scheme, but the four colors are evenly spaced on the color wheel.



4288112209



4284054100



4280646546



4286998415

# Rectangle

The Rectangle color scheme consists of four colors that form a rectangle on the color wheel.



4288112209



4286214725



4280646546



4284314013



# Sweetspot

The Sweet Spot groups the original color and five complimentary colors.



4288112209



4291080617



4288106882



4284700755



4293125091



4284703587



# Same Dimension

The Same Dimension uses a secret algorithm to generate beautiful new colors.



4288112209



4291065686



4288121169



4283254597



4287375872



4279043072



# Inverse Universe

The Inverse Universe completely reimagines the original color for something new.



4283531927



4283868100



4283522967



4282731085



4278215308

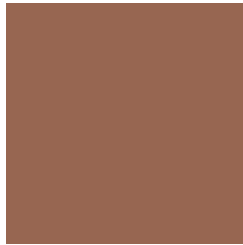


4278192397



# Previews

## White Background



This preview shows how the Android color 4288112209 looks on a white background.

## Color Contrast Check

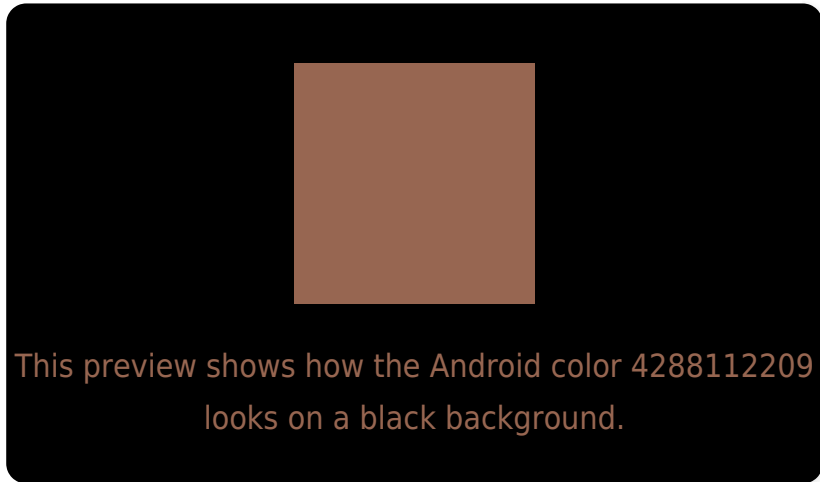
Large Text (above 18pt) WCAG AA ✓ Pass

Any Text WCAG AA ✓ Pass

Large Text (above 18pt) WCAG AAA ✓ Pass

Any Text WCAG AAA × Fail

# Black Background



## Color Contrast Check

Large Text (above 18pt) WCAG AA ✓ Pass

Any Text WCAG AA × Fail

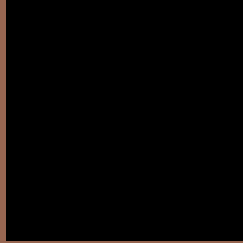
Large Text (above 18pt) WCAG AAA × Fail

Any Text WCAG AAA × Fail

If you want to check with other color combinations, try the [Color Contrast Checker](#).



# Android 4288112209 Background



This preview shows how black text looks on a background with the Android color 4288112209.



This preview shows how white text looks on a background with the Android color 4288112209.

# Color Blindness Simulation

Color vision deficiency is a very complex topic, and I could not describe the different causes any better than Wikipedia does, so if you want to learn more, you should check out their [article about color blindness](#).

## Dichromacy



**Original Color**

4288112209

**Protanopia**

4286214742

**Deuteranopia**

4287130960



# Trichromacy



**Original Color**  
4288112209

**Protanomaly**  
4286934612

**Deuteranomaly**  
4287457872

**Tritanomaly**  
4288177249

# Monochromacy



**Original Color**  
4288112209

**Achromatopsia**  
4285690482

**Achromatomaly**  
4286541414

# CSS Examples

## Text

The CSS property to change the color of the text to Android 4288112209 is called "color". The color property can be set on classes, ids or directly on the HTML element.

This example shows how text in the color `rgb(151, 102, 81)` looks like.

```
.text, #text, p{  
    color:rgb(151, 102, 81)  
}
```

If you want to add a text shadow in that color use the text-shadow property, you can generate a text shadow directly with our [CSS Text Shadow Generator](#).

Here you see how black text with a 4 pixel rgb(151, 102, 81) colored shadow looks like.

```
.shadow{ text-shadow: 4px 4px 2px rgb(151, 102, 81) }
```

## Border

The CSS property to change the border of an element to Android 4288112209 is called "border". The border property can be set on classes, ids or directly on the HTML element.

This example shows the color as border, it can be applied via the CSS property "border" or "border-color".

```
.border, #border, table{ border:4px solid rgb(151, 102, 81) }
```

If only the border color should be changed use the property `border-color`.

```
.border{ border-color:rgb(151, 102, 81) }
```

If you want to add a box shadow in that color use:

Here you see how a box with a 4 pixel `rgb(151, 102, 81)` colored shadow looks like.

```
.boxshadow{ -moz-box-shadow:4px 4px 4px  
4px rgb(151, 102, 81); -webkit-box-  
shadow:4px 4px 4px 4px rgb(151, 102, 81);  
box-shadow:4px 4px 4px 4px rgb(151, 102,  
81) }
```

# Background

The CSS property to change the background color of an element to Android 4288112209 is called "background". The background property can be set on classes, ids or directly on the HTML element.

```
.background, #background, body{  
background: rgb(151, 102, 81) }
```

If only the background color should be changed can be used:

```
.background{ background-color: rgb(151,  
102, 81) }
```

This example shows the color as background, it is applied via the CSS property "background".

To optimize and compress your CSS code, you can use our [online CSS compressor and optimizer](#) based on csstidy. If you want to create a linear or radial gradient as background or border, check our [CSS Gradient Generator](#).



Hey! You found this booklet interesting? Support Converting Colors with the new Membership Option!

The pro membership hides all ads, plus gives you double the colors in the color bucket, and more awesome pro features!

**[Learn more, Memberships starting at \\$2.50/m!](#)**

**Follow me  
on Twitter!**

@ConvertingColor