

Converting Colors

Android(4288114264)

Have a look what the booklet for
Android(4288114264) contains.

Android(4288114264)	3
<i>Conversions</i>	4
<i>Details</i>	6
<i>Harmonies</i>	11
<i>Previews</i>	23
<i>Color Blindness Simulation</i>	26
<i>CSS Examples</i>	29

Color

Android(4288114264)

Conversions

Conversions Part 1

Format	Color
Hex	976E58
RGB	151, 110, 88
RGB Percent	59%, 43%, 35%
CMY	0.4078, 0.5686, 0.6549
CMYK	0.00, 0.27, 0.42, 0.41
HSL	21°, 26%, 47%
HSV	21°, 42%, 59%
XYZ	20.0999, 18.4358, 11.7316
YIQ	119.7510, 31.4980, 1.8500

Conversions

Conversions Part 2

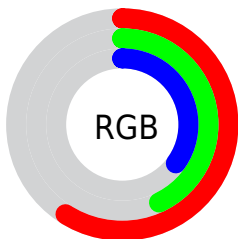
Format	Color
RYB	151, 122, 88
Decimal	9924184
CIELab	50.02, 13.32, 18.66
CIELCh	50, 22.925, 54.482
Yxy	18.4358, 0.3999, 0.3668
Android (android.graphics.Color)	4288114264 (0xFF976E58)
YUV	119.7510, -15.6532, 27.4054
Hunter-Lab	42.9369, 8.4210, 13.8561

Details

The Android color `4288114264` is a dark color, and the websafe version is hex `996666`. A complement of this color would be `4283990423`, and the grayscale version is `4286085240`.

A 20% lighter version of the original color is `4291797642`, and `4284628522` is the 20% darker color. If you saturate the color by 10%, you get `4288111689`, and if you desaturate by 10%, it is `4288116839`.

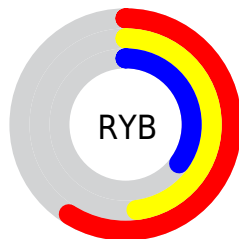
Distribution



Red (59%)

Green (43%)

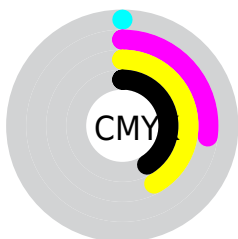
Blue (35%)



Red (59%)

Yellow (48%)

Blue (35%)

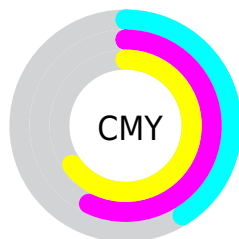


Cyan (0%)

Magenta (27%)

Yellow (42%)

Black (41%)



Cyan (41%)

Magenta (57%)

Yellow (65%)

Brightness & Saturation Gradients

These gradients show how the Android color 4288114264 changes by changing the brightness by 10 percent. The first figure shows a shift by +10% for each color and the second figure -10%.


Similar to the brightness gradients but the following saturation gradients show a change of the Android color 4288114264 by changing the saturation by 10% instead.

 4288114264

 4288114264

4294967295

 4286338625

 4291797642

 4284628522

 4293639588

 4282984469

 4294957504

 4281471744

 4294964699

 4279894017

 4294967288

 4278190080

 4288114264

 4288114264

 4288111689

 4288116839

 4288109114

 4288119414

■ 4288106795

■ 4288121733

■ 4288104220

■ 4288124308

■ 4288101644

■ 4288126884

■ 4288099584

■ 4288129459

■ 4288132034

■ 4288134609

■ 4288136928

Harmonies

Analogous

The Analogous color harmony consists of three colors that are next to each other on the color wheel.



4288571752



4288114264



4287133008

Triad

The Triadic color harmony groups three colors that are evenly spaced from another and form a triangle on the color wheel.



4288114264



4282942067



4285887386

Complementary

The Complementary color scheme is a pair of colors which are on the opposite of each other on the color wheel.



4288114264



4283990423

Split Complementary

Split-complementary colors differ from the complementary color scheme. The scheme consists of three colors, the original color and two neighbors of the complement color.



4283988637



4288114264



4281958790

Square

The Square scheme is like the rectangle color scheme, but the four colors are evenly spaced on the color wheel.



4288114264



4284383072



4282417046



4287393166

Rectangle

The Rectangle color scheme consists of four colors that form a rectangle on the color wheel.



4288114264



4286282065



4282417046



4285298333

Sweetspot

The Sweet Spot groups the original color and five complimentary colors.



4288114264



4291081387



4288108674



4284701012



4293125091



4284703587

Same Dimension

The Same Dimension uses a secret algorithm to generate beautiful new colors.



4288114264



4291069026



4288122200



4283254853



4287377664



4279043072

Inverse Universe

The Inverse Universe completely reimagines the original color for something new.



4283990423



4284654276



4283982743



4282731085



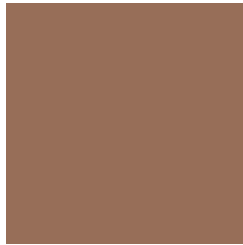
4278213516



4278192141

Previews

White Background



This preview shows how the Android color 4288114264 looks on a white background.

Color Contrast Check

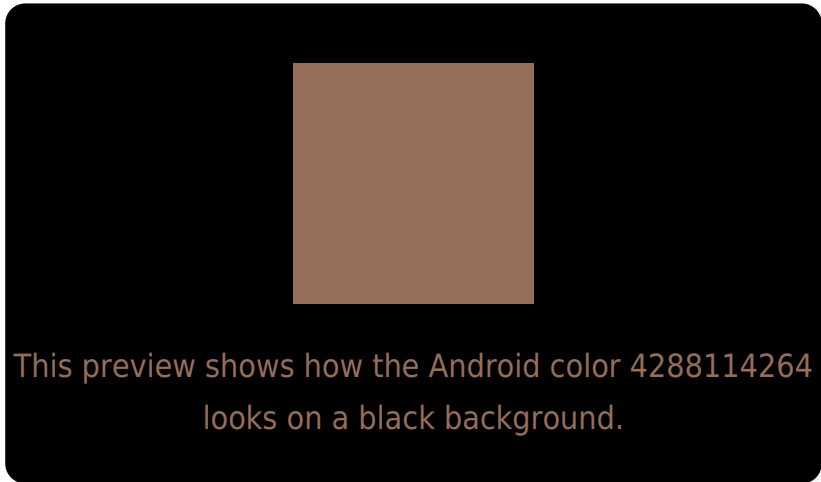
Large Text (above 18pt) WCAG AA ✓ Pass

Any Text WCAG AA ✗ Fail

Large Text (above 18pt) WCAG AAA ✗ Fail

Any Text WCAG AAA ✗ Fail

Black Background



Color Contrast Check

Large Text (above 18pt) WCAG AA ✓ Pass

Any Text WCAG AA ✓ Pass

Large Text (above 18pt) WCAG AAA ✓ Pass

Any Text WCAG AAA × Fail

If you want to check with other color combinations, try the [Color Contrast Checker](#).

Android 4288114264 Background



This preview shows how black text looks on a background with the Android color 4288114264.



This preview shows how white text looks on a background with the Android color 4288114264.

Color Blindness Simulation

Color vision deficiency is a very complex topic, and I could not describe the different causes any better than Wikipedia does, so if you want to learn more, you should check out their [article about color blindness](#).

Dichromacy



Original Color


4288114264

Protanopia

4286543708

Deuteranopia

4287459927



Tritanopia
4288244338

Trichromacy



Original Color
4288114264

Protanomaly
4287132763

Deuteranomaly
4287721815

Tritanomaly
4288179049

Monochromacy



Original Color
4288114264

Achromatopsia
4286085240

Achromatomaly
4286805100

CSS Examples

Text

The CSS property to change the color of the text to Android 4288114264 is called "color". The color property can be set on classes, ids or directly on the HTML element.

This example shows how text in the color `rgb(151, 110, 88)` looks like.

```
.text, #text, p{  
    color:rgb(151, 110, 88)  
}
```

If you want to add a text shadow in that color use the text-shadow property, you can generate a text shadow directly with our [CSS Text Shadow Generator](#).

Here you see how black text with a 4 pixel rgb(151, 110, 88) colored shadow looks like.

```
.shadow{ text-shadow: 4px 4px 2px rgb(151, 110, 88) }
```

Border

The CSS property to change the border of an element to Android 4288114264 is called "border". The border property can be set on classes, ids or directly on the HTML element.

This example shows the color as border, it can be applied via the CSS property "border" or "border-color".

```
.border, #border, table{ border:4px solid rgb(151, 110, 88) }
```

If only the border color should be changed use the property `border-color`.

```
.border{ border-color:rgb(151, 110, 88) }
```

If you want to add a box shadow in that color use:

Here you see how a box with a 4 pixel `rgb(151, 110, 88)` colored shadow looks like.

```
.boxshadow{ -moz-box-shadow:4px 4px 4px  
4px rgb(151, 110, 88); -webkit-box-  
shadow:4px 4px 4px 4px rgb(151, 110, 88);  
box-shadow:4px 4px 4px 4px rgb(151, 110,  
88) }
```

Background

The CSS property to change the background color of an element to Android 4288114264 is called "background". The background property can be set on classes, ids or directly on the HTML element.

```
.background, #background, body{  
background: rgb(151, 110, 88) }
```

If only the background color should be changed can be used:

```
.background{ background-color: rgb(151,  
110, 88) }
```

This example shows the color as background, it is applied via the CSS property "background".

To optimize and compress your CSS code, you can use our [online CSS compressor and optimizer](#) based on csstidy. If you want to create a linear or radial gradient as background or border, check our [CSS Gradient Generator](#).

Hey! You found this booklet interesting? Support Converting Colors with the new Membership Option!

The pro membership hides all ads, plus gives you double the colors in the color bucket, and more awesome pro features!

[Learn more, Memberships starting at \\$2.50/m!](#)

**Follow me
on Twitter!**

@ConvertingColor