

# Converting Colors

Android(4288246349)

Have a look what the booklet for  
Android(4288246349) contains.

<b>Android(4288246349)</b> .....	3
<b><i>Conversions</i></b> .....	4
<b><i>Details</i></b> .....	6
<b><i>Harmonies</i></b> .....	11
<b><i>Previews</i></b> .....	23
<b><i>Color Blindness Simulation</i></b> .....	26
<b><i>CSS Examples</i></b> .....	29

# Color

**Android(4288246349)**

# Conversions

## Conversions Part 1

<b>Format</b>	<b>Color</b>
Hex	99724D
RGB	153, 114, 77
RGB Percent	60%, 45%, 30%
CMY	0.4000, 0.5529, 0.6980
CMYK	0.00, 0.25, 0.50, 0.40
HSL	29°, 33%, 45%
HSV	29°, 50%, 60%
XYZ	20.4937, 19.3428, 9.6746
YIQ	121.4430, 35.1210, -3.2390

# Conversions

## Conversions Part 2

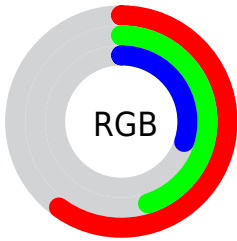
<b>Format</b>	<b>Color</b>
<a href="#">RYB</a>	<a href="#">153, 149, 77</a>
Decimal	<a href="#">10056269</a>
CIELab	<a href="#">51.09, 10.66, 26.42</a>
CIELCh	<a href="#">51, 28.489, 68.027</a>
Yxy	<a href="#">19.3428, 0.4139, 0.3907</a>
Android (android.graphics.Color)	<a href="#">4288246349</a> ( <a href="#">0xFF99724D</a> )
YUV	<a href="#">121.4430, -21.9104, 27.6755</a>
Hunter-Lab	<a href="#">43.9804, 6.2107, 17.7440</a>

# Details

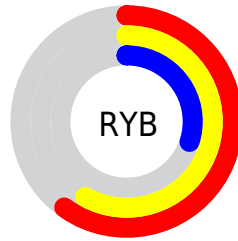
The Android color `4288246349` is a dark color, and the websafe version is hex `996633`. A complement of this color would be `4283266201`, and the grayscale version is `4286216826`.

A 20% lighter version of the original color is `4291929727`, and `4284760608` is the 20% darker color. If you saturate the color by 10%, you get `4288244286`, and if you desaturate by 10%, it is `4288248412`.

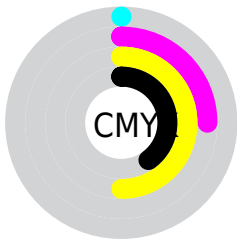
# Distribution



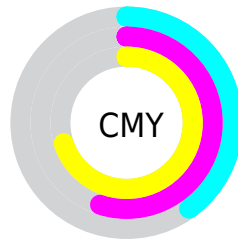
- Red (60%)
- Green (45%)
- Blue (30%)



- Red (60%)
- Yellow (58%)
- Blue (30%)



- Cyan (0%)
- Magenta (25%)
- Yellow (50%)
- Black (40%)



- Cyan (40%)
- Magenta (55%)
- Yellow (70%)

# Brightness & Saturation Gradients

These gradients show how the Android color 4288246349 changes by changing the brightness by 10 percent. The first figure shows a shift by +10% for each color and the second figure -10%.

Similar to the brightness gradients but the following saturation gradients show a change of the Android color 4288246349 by changing the saturation by 10% instead.





4288246349



4288246349

4294967295



4286470454



4291929727



4284760608



4293837209



4283051017



4294958516



4281472768



4294965711



4279894016



4294967276



4278190080



4288246349



4288246349



4288244286



4288248412



4288242222



4288250476

■ 4288240159

■ 4288252539

■ 4288238352

■ 4288254346

■ 4288236289

■ 4288256410

■ 4288236032

■ 4288258473

■ 4288260536

■ 4288262599

■ 4288264663

# Harmonies

## Analogous

The Analogous color harmony consists of three colors that are next to each other on the color wheel.



4289161821



4288246349



4286806601

# Triad

The Triadic color harmony groups three colors that are evenly spaced from another and form a triangle on the color wheel.



4288246349



4281042816



4286935456

# Complementary

The Complementary color scheme is a pair of colors which are on the opposite of each other on the color wheel.



4288246349



4283266201

# Split Complementary

Split-complementary colors differ from the complementary color scheme. The scheme consists of three colors, the original color and two neighbors of the complement color.



4284644010



4288246349



4279862679

# Square

The Square scheme is like the rectangle color scheme, but the four colors are evenly spaced on the color wheel.



4288246349



4283139431



4281958822



4288571788

# Rectangle

The Rectangle color scheme consists of four colors that form a rectangle on the color wheel.



4288246349



4285693774



4281958822



4286215333



# Sweetspot

The Sweet Spot groups the original color and five complimentary colors.



4288246349



4291279017



4288236916



4284701266



4293125091



4284703587



# Same Dimension

The Same Dimension uses a secret algorithm to generate beautiful new colors.



4288246349



4291267152



4288256077



4283255109



4287382528



4279043584



# Inverse Universe

The Inverse Universe completely reimagines the original color for something new.



4283266201



4283469255



4283256473



4282730829



4278208652

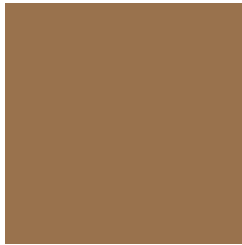


4278191885



# Previews

## White Background



This preview shows how the Android color 4288246349 looks on a white background.

## Color Contrast Check

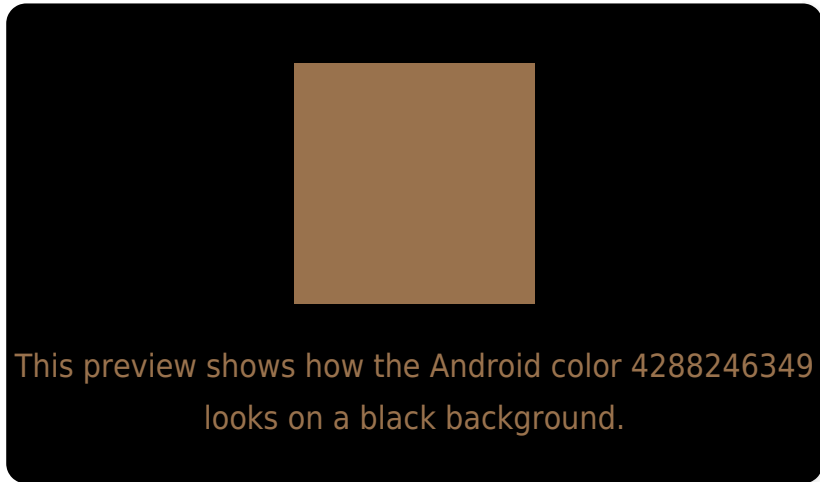
Large Text (above 18pt) WCAG AA ✓ Pass

Any Text WCAG AA ✗ Fail

Large Text (above 18pt) WCAG AAA ✗ Fail

Any Text WCAG AAA ✗ Fail

# Black Background



## Color Contrast Check

Large Text (above 18pt) WCAG AA ✓ Pass

Any Text WCAG AA ✓ Pass

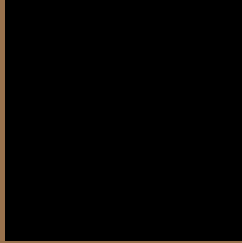
Large Text (above 18pt) WCAG AAA ✓ Pass

Any Text WCAG AAA × Fail

If you want to check with other color combinations, try the [Color Contrast Checker](#).



# Android 4288246349 Background



This preview shows how black text looks on a background with the Android color 4288246349.



This preview shows how white text looks on a background with the Android color 4288246349.

# Color Blindness Simulation

Color vision deficiency is a very complex topic, and I could not describe the different causes any better than Wikipedia does, so if you want to learn more, you should check out their [article about color blindness](#).


## Dichromacy



**Original Color**  
4288246349

**Protanopia**  
4286872144

**Deuteranopia**  
4287853900



**Tritanopia**  
4288441717

# Trichromacy



**Original Color**  
4288246349

**Protanomaly**  
4287395663

**Deuteranomaly**  
4287984716

**Tritanomaly**  
4288376678

# Monochromacy



**Original Color**  
4288246349

**Achromatopsia**  
4286151033

**Achromatomaly**  
4286936681

# CSS Examples

## Text

The CSS property to change the color of the text to Android 4288246349 is called "color". The color property can be set on classes, ids or directly on the HTML element.

This example shows how text in the color `rgb(153, 114, 77)` looks like.

```
.text, #text, p{  
    color:rgb(153, 114, 77)  
}
```

If you want to add a text shadow in that color use the text-shadow property, you can generate a text shadow directly with our [CSS Text Shadow Generator](#).

Here you see how black text with a 4 pixel rgb(153, 114, 77) colored shadow looks like.

```
.shadow{ text-shadow: 4px 4px 2px rgb(153, 114, 77) }
```

## Border

The CSS property to change the border of an element to Android 4288246349 is called "border". The border property can be set on classes, ids or directly on the HTML element.

This example shows the color as border, it can be applied via the CSS property "border" or "border-color".

```
.border, #border, table{ border:4px solid rgb(153, 114, 77) }
```

If only the border color should be changed use the property border-color.

```
.border{ border-color:rgb(153, 114, 77) }
```

If you want to add a box shadow in that color use:

Here you see how a box with a 4 pixel rgb(153, 114, 77) colored shadow looks like.

```
.boxshadow{ -moz-box-shadow:4px 4px 4px  
4px rgb(153, 114, 77); -webkit-box-  
shadow:4px 4px 4px 4px rgb(153, 114, 77);  
box-shadow:4px 4px 4px 4px rgb(153, 114,  
77) }
```

# Background

The CSS property to change the background color of an element to Android 4288246349 is called "background". The background property can be set on classes, ids or directly on the HTML element.

```
.background, #background, body{  
background: rgb(153, 114, 77) }
```

If only the background color should be changed can be used:

```
.background{ background-color: rgb(153,  
114, 77) }
```

This example shows the color as background, it is applied via the CSS property "background".

To optimize and compress your CSS code, you can use our [online CSS compressor and optimizer](#) based on csstidy. If you want to create a linear or radial gradient as background or border, check our [CSS Gradient Generator](#).



Hey! You found this booklet interesting? Support Converting Colors with the new Membership Option!

The pro membership hides all ads, plus gives you double the colors in the color bucket, and more awesome pro features!

**[Learn more, Memberships starting at \\$2.50/m!](#)**

**Follow me  
on Twitter!**

@ConvertingColor