

Converting Colors

Android(4288247124)

Have a look what the booklet for
Android(4288247124) contains.

Android(4288247124)	3
<i>Conversions</i>	4
<i>Details</i>	6
<i>Harmonies</i>	11
<i>Previews</i>	23
<i>Color Blindness Simulation</i>	26
<i>CSS Examples</i>	29

Color

Android(4288247124)

Conversions

Conversions Part 1

Format	Color
Hex	997554
RGB	153, 117, 84
RGB Percent	60%, 46%, 33%
CMY	0.4000, 0.5412, 0.6706
CMYK	0.00, 0.24, 0.45, 0.40
HSL	29°, 29%, 46%
HSV	29°, 45%, 60%
XYZ	21.0984, 20.1350, 11.1619
YIQ	124.0020, 32.0490, -2.6310

Conversions

Conversions Part 2

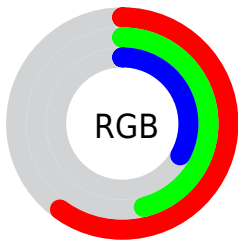
Format	Color
R_{YB}	153, 147, 84
Decimal	10057044
CIE _{Lab}	51.99, 9.68, 23.62
CIE _{LCh}	52, 25.529, 67.706
Yxy	20.1350, 0.4027, 0.3843
Android (android.graphics.Color)	4288247124 (0xFF997554)
YUV	124.0020, -19.7210, 25.4312
Hunter-Lab	44.8720, 5.4030, 16.6620

Details

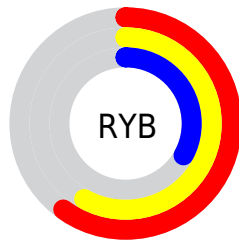
The Android color `4288247124` is a dark color, and the websafe version is hex `996633`. A complement of this color would be `4283725977`, and the grayscale version is `4286348412`.

A 20% lighter version of the original color is `4291930502`, and `4284761382` is the 20% darker color. If you saturate the color by 10%, you get `4288245061`, and if you desaturate by 10%, it is `4288249187`.

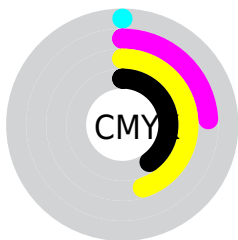
Distribution



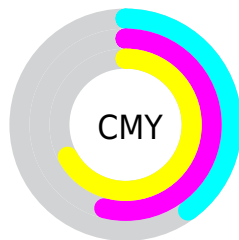
- Red (60%)
- Green (46%)
- Blue (33%)



- Red (60%)
- Yellow (58%)
- Blue (33%)



- Cyan (0%)
- Magenta (24%)
- Yellow (45%)
- Black (40%)



- Cyan (40%)
- Magenta (54%)
- Yellow (67%)

Brightness & Saturation Gradients

These gradients show how the Android color 4288247124 changes by changing the brightness by 10 percent. The first figure shows a shift by +10% for each color and the second figure -10%.

Similar to the brightness gradients but the following saturation gradients show a change of the Android color 4288247124 by changing the saturation by 10% instead.



4288247124



4288247124

4294967295



4286471229



4291930502



4284761382



4293837984



4283117073



4294959291



4281539072



4294966743



4279959552



4294967284



4278190080



4288247124



4288247124



4288245061



4288249187



4288242997



4288251251

■ 4288240934

■ 4288253314

■ 4288238871

■ 4288255377

■ 4288236808

■ 4288257441

■ 4288235776

■ 4288259504

■ 4288261567

■ 4288263630

■ 4288265694

Harmonies

Analogous

The Analogous color harmony consists of three colors that are next to each other on the color wheel.



4289031778



4288247124



4286938192

Triad

The Triadic color harmony groups three colors that are evenly spaced from another and form a triangle on the color wheel.



4288247124



4282091649



4287001759

Complementary

The Complementary color scheme is a pair of colors which are on the opposite of each other on the color wheel.



4288247124



4283725977

Split Complementary

Split-complementary colors differ from the complementary color scheme. The scheme consists of three colors, the original color and two neighbors of the complement color.



4284972199



4288247124



4281501590

Square

The Square scheme is like the rectangle color scheme, but the four colors are evenly spaced on the color wheel.



4288247124



4283729771



4282811300



4288441997

Rectangle

The Rectangle color scheme consists of four colors that form a rectangle on the color wheel.



4288247124



4285956437



4282811300



4286412707

Sweetspot

The Sweet Spot groups the original color and five complimentary colors.



4288247124



4291279019



4288238713



4284701523



4293125091



4284703587

Same Dimension

The Same Dimension uses a secret algorithm to generate beautiful new colors.



4288247124



4291268443



4288255828



4283255109



4287382272



4279043584

Inverse Universe

The Inverse Universe completely reimagines the original color for something new.



4283725977



4284191943



4283717273



4282730829



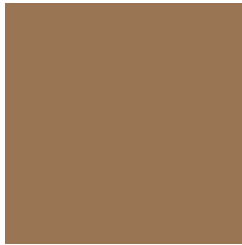
4278208908



4278191885

Previews

White Background



This preview shows how the Android color 4288247124 looks on a white background.

Color Contrast Check

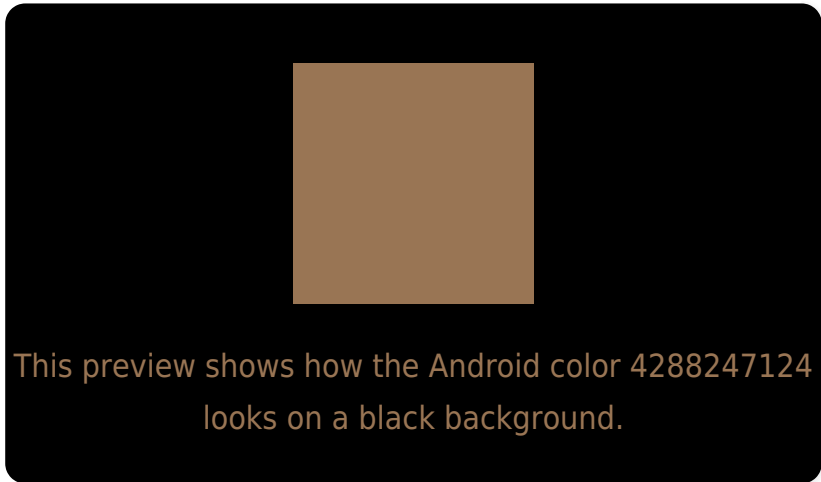
Large Text (above 18pt) WCAG AA ✓ Pass

Any Text WCAG AA ✗ Fail

Large Text (above 18pt) WCAG AAA ✗ Fail

Any Text WCAG AAA ✗ Fail

Black Background



Color Contrast Check

Large Text (above 18pt) WCAG AA ✓ Pass

Any Text WCAG AA ✓ Pass

Large Text (above 18pt) WCAG AAA ✓ Pass

Any Text WCAG AAA × Fail

If you want to check with other color combinations, try the [Color Contrast Checker](#).

Android 4288247124 Background



This preview shows how black text looks on a background with the Android color 4288247124.



This preview shows how white text looks on a background with the Android color 4288247124.

Color Blindness Simulation

Color vision deficiency is a very complex topic, and I could not describe the different causes any better than Wikipedia does, so if you want to learn more, you should check out their [article about color blindness](#).

Dichromacy



Original Color
4288247124

Protanopia
4287003735

Deuteranopia
4287985492



Tritanopia
4288442489

Trichromacy



Original Color
4288247124

Protanomaly
4287461718

Deuteranomaly
4288050772

Tritanomaly
4288377452

Monochromacy



Original Color
4288247124

Achromatopsia
4286348412

Achromatomaly
4287068525

CSS Examples

Text

The CSS property to change the color of the text to Android 4288247124 is called "color". The color property can be set on classes, ids or directly on the HTML element.

This example shows how text in the color `rgb(153, 117, 84)` looks like.

```
.text, #text, p{  
    color:rgb(153, 117, 84)  
}
```

If you want to add a text shadow in that color use the text-shadow property, you can generate a text shadow directly with our [CSS Text Shadow Generator](#).

Here you see how black text with a 4 pixel rgb(153, 117, 84) colored shadow looks like.

```
.shadow{ text-shadow: 4px 4px 2px rgb(153, 117, 84) }
```

Border

The CSS property to change the border of an element to Android 4288247124 is called "border". The border property can be set on classes, ids or directly on the HTML element.

This example shows the color as border, it can be applied via the CSS property "border" or "border-color".

```
.border, #border, table{ border:4px solid rgb(153, 117, 84) }
```

If only the border color should be changed use the property `border-color`.

```
.border{ border-color:rgb(153, 117, 84) }
```

If you want to add a box shadow in that color use:

Here you see how a box with a 4 pixel `rgb(153, 117, 84)` colored shadow looks like.

```
.boxshadow{ -moz-box-shadow:4px 4px 4px  
4px rgb(153, 117, 84); -webkit-box-  
shadow:4px 4px 4px 4px rgb(153, 117, 84);  
box-shadow:4px 4px 4px 4px rgb(153, 117,  
84) }
```

Background

The CSS property to change the background color of an element to Android 4288247124 is called "background". The background property can be set on classes, ids or directly on the HTML element.

```
.background, #background, body{  
background: rgb(153, 117, 84) }
```

If only the background color should be changed can be used:

```
.background{ background-color: rgb(153,  
117, 84) }
```

This example shows the color as background, it is applied via the CSS property "background".

To optimize and compress your CSS code, you can use our [online CSS compressor and optimizer](#) based on csstidy. If you want to create a linear or radial gradient as background or border, check our [CSS Gradient Generator](#).

Hey! You found this booklet interesting? Support Converting Colors with the new Membership Option!

The pro membership hides all ads, plus gives you double the colors in the color bucket, and more awesome pro features!

[Learn more, Memberships starting at \\$2.50/m!](#)

**Follow me
on Twitter!**

@ConvertingColor