

Converting Colors

Android(4288311370)

Have a look what the booklet for
Android(4288311370) contains.

Android(4288311370)	3
<i>Conversions</i>	4
<i>Details</i>	6
<i>Harmonies</i>	11
<i>Previews</i>	23
<i>Color Blindness Simulation</i>	26
<i>CSS Examples</i>	29

Color

Android(4288311370)

Conversions

Conversions Part 1

Format	Color
Hex	9A704A
RGB	154, 112, 74
RGB Percent	60%, 44%, 29%
CMY	0.3961, 0.5608, 0.7098
CMYK	0.00, 0.27, 0.52, 0.40
HSL	28°, 35%, 45%
HSV	28°, 52%, 60%
XYZ	20.3566, 18.9528, 9.0639
YIQ	120.2260, 37.2300, -2.9140

Conversions

Conversions Part 2

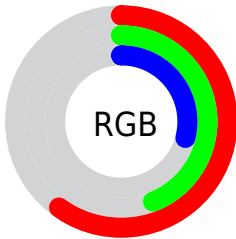
Format	Color
RYB	154, 146, 74
Decimal	10121290
CIELab	50.63, 11.95, 27.56
CIElCh	51, 30.034, 66.562
Yxy	18.9528, 0.4208, 0.3918
Android (android.graphics.Color)	4288311370 (0xFF9A704A)
YUV	120.2260, -22.7894, 29.6198
Hunter-Lab	43.5348, 7.2797, 18.1302

Details

The Android color **4288311370** is a dark color, and the websafe version is hex **996633**. A complement of this color would be **4283069594**, and the grayscale version is **4286085240**.

A 20% lighter version of the original color is **4291994747**, and **4284760093** is the 20% darker color. If you saturate the color by 10%, you get **4288309307**, and if you desaturate by 10%, it is **4288313433**.

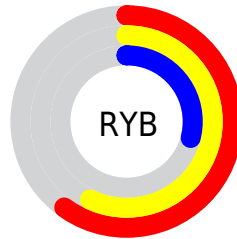
Distribution



Red (60%)

Green (44%)

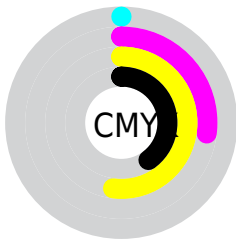
Blue (29%)



Red (60%)

Yellow (57%)

Blue (29%)

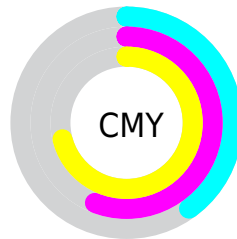


Cyan (0%)

Magenta (27%)

Yellow (52%)

Black (40%)



Cyan (40%)

Magenta (56%)

Yellow (71%)

Brightness & Saturation Gradients

These gradients show how the Android color 4288311370 changes by changing the brightness by 10 percent. The first figure shows a shift by +10% for each color and the second figure -10%.

Similar to the brightness gradients but the following saturation gradients show a change of the Android color 4288311370 by changing the saturation by 10% instead.



4288311370



4288311370

4294967295



4286535731



4291994747



4284760093



4293902229



4283116037



4294958000



4281472256



4294965196



4279894016



4294967272



4278190080



4288311370



4288311370



4288309307



4288313433



4288307243



4288315497

 4288305180

 4288317560

 4288303116

 4288319624

 4288301312

 4288321687

 4288324006

 4288326070

 4288328133

 4288330197

Harmonies

Analogous

The Analogous color harmony consists of three colors that are next to each other on the color wheel.



4289226843



4288311370



4286871877

Triad

The Triadic color harmony groups three colors that are evenly spaced from another and form a triangle on the color wheel.



4288311370



4280452733



4286804130

Complementary

The Complementary color scheme is a pair of colors which are on the opposite of each other on the color wheel.



4288311370



4283069594

Split Complementary

Split-complementary colors differ from the complementary color scheme. The scheme consists of three colors, the original color and two neighbors of the complement color.



4284250539



4288311370



4278224278

Square

The Square scheme is like the rectangle color scheme, but the four colors are evenly spaced on the color wheel.



4288311370



4283008355



4281172391



4288505997

Rectangle

The Rectangle color scheme consists of four colors that form a rectangle on the color wheel.



4288311370



4285693514



4281172391



4286018470

Sweetspot

The Sweet Spot groups the original color and five complimentary colors.



4288311370



4291410345



4288301685



4284898387



4293322470



4284900966

Same Dimension

The Same Dimension uses a secret algorithm to generate beautiful new colors.



4288311370



4291397709



4288321354



4283254853



4287382272



4279043584

Inverse Universe

The Inverse Universe completely reimagines the original color for something new.



4283069594



4283272905



4283059610



4282730829



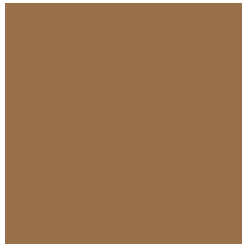
4278209164



4278191885

Previews

White Background



This preview shows how the Android color 4288311370 looks on a white background.

Color Contrast Check

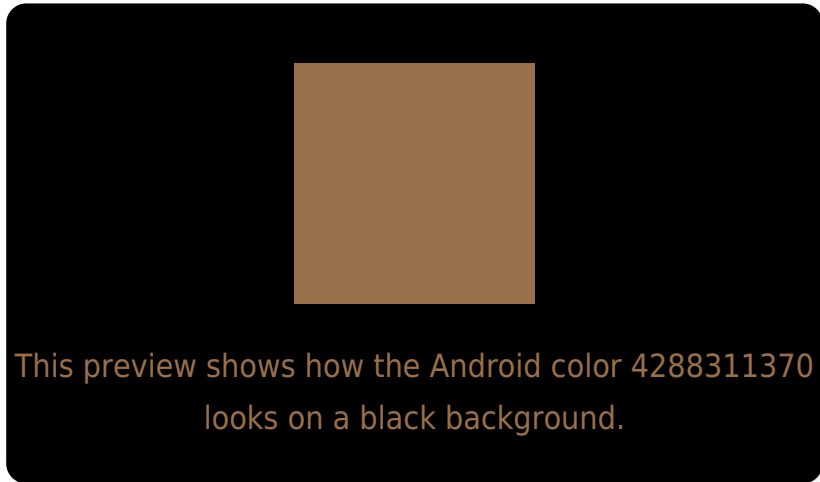
Large Text (above 18pt) WCAG AA ✓ Pass

Any Text WCAG AA ✗ Fail

Large Text (above 18pt) WCAG AAA ✗ Fail

Any Text WCAG AAA ✗ Fail

Black Background



Color Contrast Check

Large Text (above 18pt) WCAG AA ✓ Pass

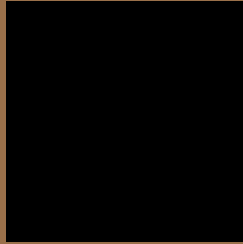
Any Text WCAG AA ✓ Pass

Large Text (above 18pt) WCAG AAA ✓ Pass

Any Text WCAG AAA × Fail

If you want to check with other color combinations, try the [Color Contrast Checker](#).

Android 4288311370 Background



This preview shows how black text looks on a background with the Android color 4288311370.



This preview shows how white text looks on a background with the Android color 4288311370.

Color Blindness Simulation

Color vision deficiency is a very complex topic, and I could not describe the different causes any better than Wikipedia does, so if you want to learn more, you should check out their [article about color blindness](#).

Dichromacy



Original Color
4288311370

Protanopia
4286871885

Deuteranopia
4287787849

Trichromacy



Original Color
4288311370

Protanomaly
4287395404

Deuteranomaly
4287984201

Tritanomaly
4288441700

Monochromacy



Original Color
4288311370

Achromatopsia
4286085240

Achromatomaly
4286870887

CSS Examples

Text

The CSS property to change the color of the text to Android 4288311370 is called "color". The color property can be set on classes, ids or directly on the HTML element.

This example shows how text in the color `rgb(154, 112, 74)` looks like.

```
.text, #text, p{  
    color:rgb(154, 112, 74)  
}
```

If you want to add a text shadow in that color use the text-shadow property, you can generate a text shadow directly with our [CSS Text Shadow Generator](#).

Here you see how black text with a 4 pixel rgb(154, 112, 74) colored shadow looks like.

```
.shadow{ text-shadow: 4px 4px 2px rgb(154, 112, 74) }
```

Border

The CSS property to change the border of an element to Android 4288311370 is called "border". The border property can be set on classes, ids or directly on the HTML element.

This example shows the color as border, it can be applied via the CSS property "border" or "border-color".

```
.border, #border, table{ border:4px solid rgb(154, 112, 74) }
```

If only the border color should be changed use the property `border-color`.

```
.border{ border-color:rgb(154, 112, 74) }
```

If you want to add a box shadow in that color use:

Here you see how a box with a 4 pixel `rgb(154, 112, 74)` colored shadow looks like.

```
.boxshadow{ -moz-box-shadow:4px 4px 4px 4px rgb(154, 112, 74); -webkit-box-shadow:4px 4px 4px 4px rgb(154, 112, 74); box-shadow:4px 4px 4px 4px rgb(154, 112, 74) }
```

Background

The CSS property to change the background color of an element to Android 4288311370 is called "background". The background property can be set on classes, ids or directly on the HTML element.

```
.background, #background, body{  
background: rgb(154, 112, 74) }
```

If only the background color should be changed can be used:

```
.background{ background-color: rgb(154,  
112, 74) }
```

This example shows the color as background, it is applied via the CSS property "background".

To optimize and compress your CSS code, you can use our [online CSS compressor and optimizer](#) based on csstidy. If you want to create a linear or radial gradient as background or border, check our [CSS Gradient Generator](#).

Hey! You found this booklet interesting? Support Converting Colors with the new Membership Option!

The pro membership hides all ads, plus gives you double the colors in the color bucket, and more awesome pro features!

[Learn more, Memberships starting at \\$2.50/m!](#)

**Follow me
on Twitter!**

@ConvertingColor