

Converting Colors

Android(4288443744)

Have a look what the booklet for
Android(4288443744) contains.

Android(4288443744)	3
<i>Conversions</i>	4
<i>Details</i>	6
<i>Harmonies</i>	11
<i>Previews</i>	23
<i>Color Blindness Simulation</i>	26
<i>CSS Examples</i>	29

Color

Android(4288443744)

Conversions

Conversions Part 1

Format	Color
Hex	9C7560
RGB	156, 117, 96
RGB Percent	61%, 46%, 38%
CMY	0.3882, 0.5412, 0.6235
CMYK	0.00, 0.25, 0.38, 0.39
HSL	21°, 24%, 49%
HSV	21°, 38%, 61%
XYZ	22.1829, 20.6350, 13.8801
YIQ	126.2670, 29.9850, 1.7370

Conversions

Conversions Part 2

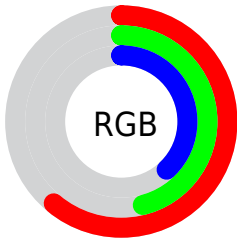
Format	Color
RYB	156, 128, 96
Decimal	10253664
CIELab	52.55, 12.38, 17.53
CIElCh	53, 21.460, 54.770
Yxy	20.6350, 0.3912, 0.3639
Android (android.graphics.Color)	4288443744 (0xFF9C7560)
YUV	126.2670, -14.9216, 26.0758
Hunter-Lab	45.4258, 7.6723, 13.6816

Details

The Android color `4288443744` is a dark color, and the websafe version is hex `996666`. A complement of this color would be `4284516252`, and the grayscale version is `4286479998`.

A 20% lighter version of the original color is `4292127123`, and `4284958002` is the 20% darker color. If you saturate the color by 10%, you get `4288441168`, and if you desaturate by 10%, it is `4288446320`.

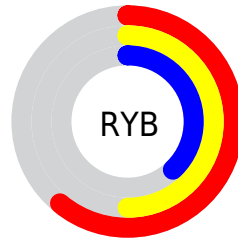
Distribution



Red (61%)

Green (46%)

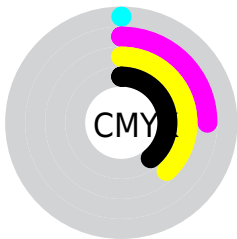
Blue (38%)



Red (61%)

Yellow (50%)

Blue (38%)

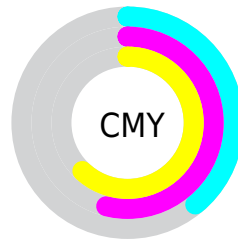


Cyan (0%)

Magenta (25%)

Yellow (38%)

Black (39%)



Cyan (39%)

Magenta (54%)

Yellow (62%)

Brightness & Saturation Gradients

These gradients show how the Android color 4288443744 changes by changing the brightness by 10 percent. The first figure shows a shift by +10% for each color and the second figure -10%.

Similar to the brightness gradients but the following saturation gradients show a change of the Android color 4288443744 by changing the saturation by 10% instead.



4288443744



4288443744

4294967295



4286667848



4292127123



4284958002



4294034605



4283313692



4294959305



4281735427



4294966757



4280287232



4278190080



4288443744



4288443744



4288441168



4288446320



4288438593



4288448895

 4288436017

 4288451471

 4288433186

 4288454302

 4288430610

 4288456878

 4288428034

 4288459454

 4288427776

 4288462029

 4288464605

 4288467180

Harmonies

Analogous

The Analogous color harmony consists of three colors that are next to each other on the color wheel.



4288901487



4288443744



4287527769

Triad

The Triadic color harmony groups three colors that are evenly spaced from another and form a triangle on the color wheel.



4288443744



4283598713



4286347935

Complementary

The Complementary color scheme is a pair of colors which are on the opposite of each other on the color wheel.



4288443744



4284516252

Split Complementary

Split-complementary colors differ from the complementary color scheme. The scheme consists of three colors, the original color and two neighbors of the complement color.



4284645538



4288443744



4282812300

Square

The Square scheme is like the rectangle color scheme, but the four colors are evenly spaced on the color wheel.



4288443744



4284843368



4283205019



4287788179

Rectangle

The Rectangle color scheme consists of four colors that form a rectangle on the color wheel.



4288443744



4286676826



4283205019



4285758625

Sweetspot

The Sweet Spot groups the original color and five complimentary colors.



4288443744



4291607732



4288438407



4284898648



4293322470



4284900966

Same Dimension

The Same Dimension uses a secret algorithm to generate beautiful new colors.



4288443744



4291596142



4288451168



4283386439



4287574528



4279174400

Inverse Universe

The Inverse Universe completely reimagines the original color for something new.



4284516252



4285443020



4284508572



4282862671



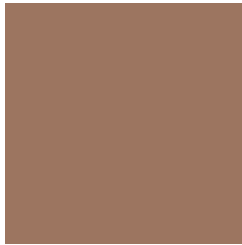
4278214031



4278192655

Previews

White Background



This preview shows how the Android color 4288443744 looks on a white background.

Color Contrast Check

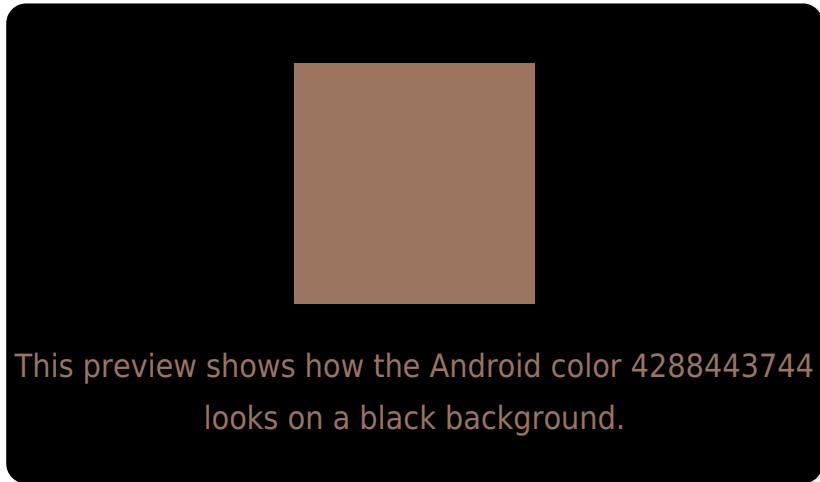
Large Text (above 18pt) WCAG AA ✓ Pass

Any Text WCAG AA ✗ Fail

Large Text (above 18pt) WCAG AAA ✗ Fail

Any Text WCAG AAA ✗ Fail

Black Background



Color Contrast Check

Large Text (above 18pt) WCAG AA ✓ Pass

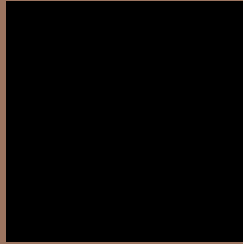
Any Text WCAG AA ✓ Pass

Large Text (above 18pt) WCAG AAA ✓ Pass

Any Text WCAG AAA × Fail

If you want to check with other color combinations, try the [Color Contrast Checker](#).

Android 4288443744 Background



This preview shows how black text looks on a background with the Android color 4288443744.



This preview shows how white text looks on a background with the Android color 4288443744.

Color Blindness Simulation

Color vision deficiency is a very complex topic, and I could not describe the different causes any better than Wikipedia does, so if you want to learn more, you should check out their [article about color blindness](#).

Dichromacy



Original Color

4288443744

Protanopia

4287004004

Deuteranopia

4287920479

Trichromacy



Original Color

4288443744

Protanomaly

4287527523

Deuteranomaly

4288116831

Tritanomaly

4288574065

Monochromacy



Original Color

4288443744

Achromatopsia

4286479998

Achromatomaly

4287200115

CSS Examples

Text

The CSS property to change the color of the text to Android 4288443744 is called "color". The color property can be set on classes, ids or directly on the HTML element.

This example shows how text in the color `rgb(156, 117, 96)` looks like.

```
.text, #text, p{  
    color:rgb(156, 117, 96)  
}
```

If you want to add a text shadow in that color use the text-shadow property, you can generate a text shadow directly with our [CSS Text Shadow Generator](#).

Here you see how black text with a 4 pixel rgb(156, 117, 96) colored shadow looks like.

```
.shadow{ text-shadow: 4px 4px 2px rgb(156, 117, 96) }
```

Border

The CSS property to change the border of an element to Android 4288443744 is called "border". The border property can be set on classes, ids or directly on the HTML element.

This example shows the color as border, it can be applied via the CSS property "border" or "border-color".

```
.border, #border, table{ border:4px solid rgb(156, 117, 96) }
```

If only the border color should be changed use the property `border-color`.

```
.border{ border-color:rgb(156, 117, 96) }
```

If you want to add a box shadow in that color use:

Here you see how a box with a 4 pixel `rgb(156, 117, 96)` colored shadow looks like.

```
.boxshadow{ -moz-box-shadow:4px 4px 4px  
4px rgb(156, 117, 96); -webkit-box-  
shadow:4px 4px 4px 4px rgb(156, 117, 96);  
box-shadow:4px 4px 4px 4px rgb(156, 117,  
96) }
```

Background

The CSS property to change the background color of an element to Android 4288443744 is called "background". The background property can be set on classes, ids or directly on the HTML element.

```
.background, #background, body{  
background: rgb(156, 117, 96) }
```

If only the background color should be changed can be used:

```
.background{ background-color: rgb(156,  
117, 96) }
```

This example shows the color as background, it is applied via the CSS property "background".

To optimize and compress your CSS code, you can use our [online CSS compressor and optimizer](#) based on csstidy. If you want to create a linear or radial gradient as background or border, check our [CSS Gradient Generator](#).

Hey! You found this booklet interesting? Support Converting Colors with the new Membership Option!

The pro membership hides all ads, plus gives you double the colors in the color bucket, and more awesome pro features!

[Learn more, Memberships starting at \\$2.50/m!](#)

**Follow me
on Twitter!**

@ConvertingColor