

Converting Colors

Android(4288444003)

Have a look what the booklet for
Android(4288444003) contains.

Android(4288444003)	3
<i>Conversions</i>	4
<i>Details</i>	6
<i>Harmonies</i>	11
<i>Previews</i>	23
<i>Color Blindness Simulation</i>	26
<i>CSS Examples</i>	29

Color

Android(4288444003)

Conversions

Conversions Part 1

Format	Color
Hex	9C7663
RGB	156, 118, 99
RGB Percent	61%, 46%, 39%
CMY	0.3882, 0.5373, 0.6118
CMYK	0.00, 0.24, 0.37, 0.39
HSL	20°, 22%, 50%
HSV	20°, 37%, 61%
XYZ	22.4409, 20.9256, 14.6607
YIQ	127.1960, 28.7470, 2.1470

Conversions

Conversions Part 2

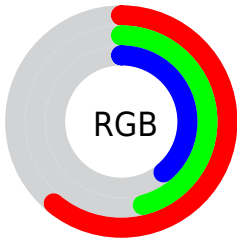
Format	Color
RYB	156, 128, 99
Decimal	10253923
CIELab	52.87, 12.19, 16.23
CIElCh	53, 20.296, 53.095
Yxy	20.9256, 0.3867, 0.3606
Android (android.graphics.Color)	4288444003 (0xFF9C7663)
YUV	127.1960, -13.9006, 25.2611
Hunter-Lab	45.7446, 7.5136, 13.0193

Details

The Android color `4288444003` is a dark color, and the websafe version is hex `996666`. A complement of this color would be `4284713372`, and the grayscale version is `4286545791`.

A 20% lighter version of the original color is `4292127382`, and `4284958260` is the 20% darker color. If you saturate the color by 10%, you get `4288441427`, and if you desaturate by 10%, it is `4288446579`.

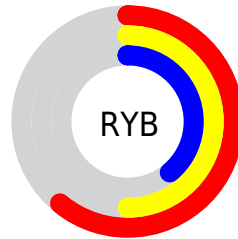
Distribution



Red (61%)

Green (46%)

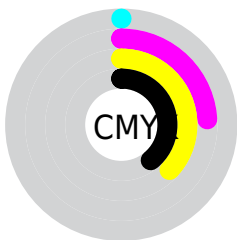
Blue (39%)



Red (61%)

Yellow (50%)

Blue (39%)

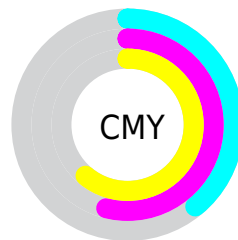


Cyan (0%)

Magenta (24%)

Yellow (37%)

Black (39%)



Cyan (39%)

Magenta (54%)

Yellow (61%)

Brightness & Saturation Gradients

These gradients show how the Android color 4288444003 changes by changing the brightness by 10 percent. The first figure shows a shift by +10% for each color and the second figure -10%.

Similar to the brightness gradients but the following saturation gradients show a change of the Android color 4288444003 by changing the saturation by 10% instead.



4288444003



4288444003

4294967295



4286668107



4292127382



4284958260



4293969585



4283313951



4294959820



4281735688



4294967016



4280287232



4278190080



4288444003



4288444003



4288441427



4288446579



4288438596



4288449410

 4288436020

 4288451986

 4288433189

 4288454817

 4288430613

 4288457393

 4288428037

 4288459969

 4288427008

 4288462800

 4288465376

 4288468207

Harmonies

Analogous

The Analogous color harmony consists of three colors that are next to each other on the color wheel.



4288836209



4288444003



4287593564

Triad

The Triadic color harmony groups three colors that are evenly spaced from another and form a triangle on the color wheel.



4288444003



4283861113



4286348190

Complementary

The Complementary color scheme is a pair of colors which are on the opposite of each other on the color wheel.



4288444003



4284713372

Split Complementary

Split-complementary colors differ from the complementary color scheme. The scheme consists of three colors, the original color and two neighbors of the complement color.



4284711328



4288444003



4283140235

Square

The Square scheme is like the rectangle color scheme, but the four colors are evenly spaced on the color wheel.



4288444003



4285105769



4283467417



4287722899

Rectangle

The Rectangle color scheme consists of four colors that form a rectangle on the color wheel.



4288444003



4286808156



4283467417



4285758880

Sweetspot

The Sweet Spot groups the original color and five complimentary colors.



4288444003



4291607990



4288439177



4284898649



4293322470



4284900966

Same Dimension

The Same Dimension uses a secret algorithm to generate beautiful new colors.



4288444003



4291596402



4288451427



4283386439



4287574016



4279174400

Inverse Universe

The Inverse Universe completely reimagines the original color for something new.



4284713372



4285705932



4284706204



4282862671



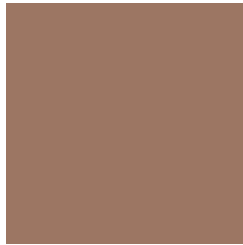
4278214543



4278192655

Previews

White Background



This preview shows how the Android color 4288444003 looks on a white background.

Color Contrast Check

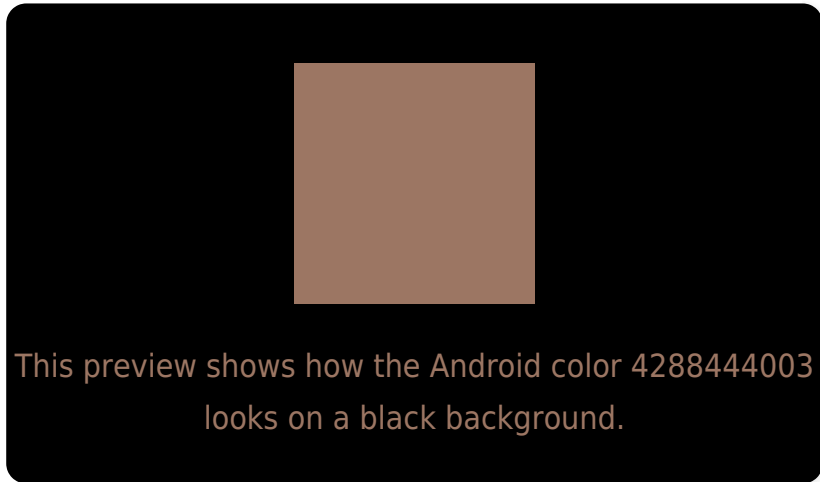
Large Text (above 18pt) WCAG AA ✓ Pass

Any Text WCAG AA ✗ Fail

Large Text (above 18pt) WCAG AAA ✗ Fail

Any Text WCAG AAA ✗ Fail

Black Background



Color Contrast Check

Large Text (above 18pt) WCAG AA ✓ Pass

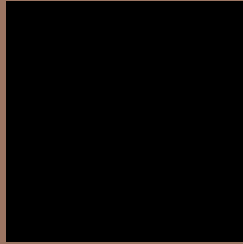
Any Text WCAG AA ✓ Pass

Large Text (above 18pt) WCAG AAA ✓ Pass

Any Text WCAG AAA × Fail

If you want to check with other color combinations, try the [Color Contrast Checker](#).

Android 4288444003 Background



This preview shows how black text looks on a background with the Android color 4288444003.



This preview shows how white text looks on a background with the Android color 4288444003.

Color Blindness Simulation

Color vision deficiency is a very complex topic, and I could not describe the different causes any better than Wikipedia does, so if you want to learn more, you should check out their [article about color blindness](#).


Dichromacy



Original Color
4288444003

Protanopia
4287004263

Deuteranopia
4287920482



Tritanopia
4288574331

Trichromacy



Original Color
4288444003

Protanomaly
4287527782

Deuteranomaly
4288116834

Tritanomaly
4288509042

Monochromacy



Original Color
4288444003

Achromatopsia
4286545791

Achromatomaly
4287265909

CSS Examples

Text

The CSS property to change the color of the text to Android 4288444003 is called "color". The color property can be set on classes, ids or directly on the HTML element.

This example shows how text in the color `rgb(156, 118, 99)` looks like.

```
.text, #text, p{  
    color:rgb(156, 118, 99)  
}
```

If you want to add a text shadow in that color use the text-shadow property, you can generate a text shadow directly with our [CSS Text Shadow Generator](#).

Here you see how black text with a 4 pixel rgb(156, 118, 99) colored shadow looks like.

```
.shadow{ text-shadow: 4px 4px 2px rgb(156, 118, 99) }
```

Border

The CSS property to change the border of an element to Android 4288444003 is called "border". The border property can be set on classes, ids or directly on the HTML element.

This example shows the color as border, it can be applied via the CSS property "border" or "border-color".

```
.border, #border, table{ border:4px solid rgb(156, 118, 99) }
```

If only the border color should be changed use the property `border-color`.

```
.border{ border-color:rgb(156, 118, 99) }
```

If you want to add a box shadow in that color use:

Here you see how a box with a 4 pixel `rgb(156, 118, 99)` colored shadow looks like.

```
.boxshadow{ -moz-box-shadow:4px 4px 4px  
4px rgb(156, 118, 99); -webkit-box-  
shadow:4px 4px 4px 4px rgb(156, 118, 99);  
box-shadow:4px 4px 4px 4px rgb(156, 118,  
99) }
```

Background

The CSS property to change the background color of an element to Android 4288444003 is called "background". The background property can be set on classes, ids or directly on the HTML element.

```
.background, #background, body{  
background: rgb(156, 118, 99) }
```

If only the background color should be changed can be used:

```
.background{ background-color: rgb(156,  
118, 99) }
```

This example shows the color as background, it is applied via the CSS property "background".

To optimize and compress your CSS code, you can use our [online CSS compressor and optimizer](#) based on csstidy. If you want to create a linear or radial gradient as background or border, check our [CSS Gradient Generator](#).

Hey! You found this booklet interesting? Support Converting Colors with the new Membership Option!

The pro membership hides all ads, plus gives you double the colors in the color bucket, and more awesome pro features!

[Learn more, Memberships starting at \\$2.50/m!](#)

**Follow me
on Twitter!**

@ConvertingColor