

Converting Colors

Android(4288445272)

Have a look what the booklet for
Android(4288445272) contains.

Android(4288445272)	3
<i>Conversions</i>	4
<i>Details</i>	6
<i>Harmonies</i>	11
<i>Previews</i>	23
<i>Color Blindness Simulation</i>	26
<i>CSS Examples</i>	29

Color

Android(4288445272)

Conversions

Conversions Part 1

Format	Color
Hex	9C7B58
RGB	156, 123, 88
RGB Percent	61%, 48%, 35%
CMY	0.3882, 0.5176, 0.6549
CMYK	0.00, 0.21, 0.44, 0.39
HSL	31°, 28%, 48%
HSV	31°, 44%, 61%
XYZ	22.5547, 21.9384, 12.2783
YIQ	128.8770, 30.9030, -3.8890

Conversions

Conversions Part 2

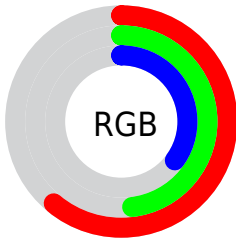
Format	Color
RYB	152, 156, 88
Decimal	10255192
CIELab	53.96, 8.00, 24.00
CIELCh	54, 25.295, 71.574
Yxy	21.9384, 0.3973, 0.3864
Android (android.graphics.Color)	4288445272 (0xFF9C7B58)
YUV	128.8770, -20.1524, 23.7869
Hunter-Lab	46.8385, 3.9880, 17.2446

Details

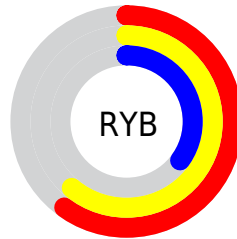
The Android color `4288445272` is a dark color, and the websafe version is hex `996633`. A complement of this color would be `4283988380`, and the grayscale version is `4286677377`.

A 20% lighter version of the original color is `4292128650`, and `4284959274` is the 20% darker color. If you saturate the color by 10%, you get `4288443208`, and if you desaturate by 10%, it is `4288447336`.

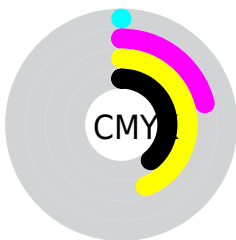
Distribution



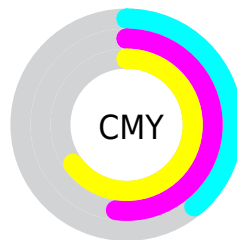
- Red (61%)
- Green (48%)
- Blue (35%)



- Red (60%)
- Yellow (61%)
- Blue (35%)



- Cyan (0%)
- Magenta (21%)
- Yellow (44%)
- Black (39%)



- Cyan (39%)
- Magenta (52%)
- Yellow (65%)

Brightness & Saturation Gradients

These gradients show how the Android color 4288445272 changes by changing the brightness by 10 percent. The first figure shows a shift by +10% for each color and the second figure -10%.

Similar to the brightness gradients but the following saturation gradients show a change of the Android color 4288445272 by changing the saturation by 10% instead.



4288445272



4288445272

4294967295



4286669376



4292128650



4284959274



4294036389



4283315220



4294961088



4281736704



4294967260



4280158208



4294967288



4278190080



4288445272



4288445272



4288443208



4288447336



4288441401



4288449143

 4288439337

 4288451207

 4288437530

 4288453014

 4288435466

 4288455078

 4288434176

 4288456886

 4288458949

 4288461013

 4288462820

Harmonies

Analogous

The Analogous color harmony consists of three colors that are next to each other on the color wheel.



4289295461



4288445272



4287136342

Triad

The Triadic color harmony groups three colors that are evenly spaced from another and form a triangle on the color wheel.



4288445272



4282355081



4287592610

Complementary

The Complementary color scheme is a pair of colors which are on the opposite of each other on the color wheel.



4288445272



4283988380

Split Complementary

Split-complementary colors differ from the complementary color scheme. The scheme consists of three colors, the original color and two neighbors of the complement color.



4285628587



4288445272



4282092445

Square

The Square scheme is like the rectangle color scheme, but the four colors are evenly spaced on the color wheel.



4288445272



4283862130



4283467690



4288901775

Rectangle

The Rectangle color scheme consists of four colors that form a rectangle on the color wheel.



4288445272



4286089051



4283467690



4286938022

Sweetspot

The Sweet Spot groups the original color and five complimentary colors.



4288445272



4291608497



4288436346



4284898902



4293322470



4284900966

Same Dimension

The Same Dimension uses a secret algorithm to generate beautiful new colors.



4288445272



4291598690



4288453720



4283386695



4287580672



4279175168

Inverse Universe

The Inverse Universe completely reimagines the original color for something new.



4283988380



4284650956



4283979932



4282862415



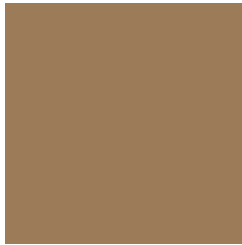
4278207887



4278191887

Previews

White Background



This preview shows how the Android color 4288445272 looks on a white background.

Color Contrast Check

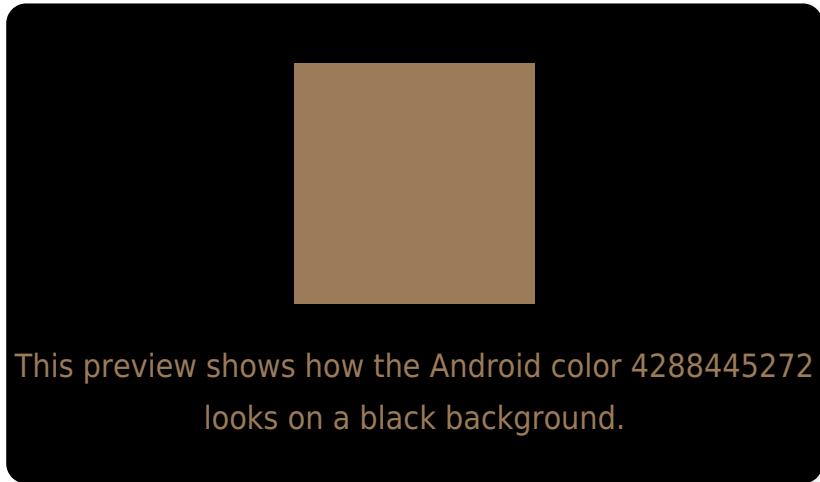
Large Text (above 18pt) WCAG AA ✓ Pass

Any Text WCAG AA ✗ Fail

Large Text (above 18pt) WCAG AAA ✗ Fail

Any Text WCAG AAA ✗ Fail

Black Background



Color Contrast Check

Large Text (above 18pt) WCAG AA ✓ Pass

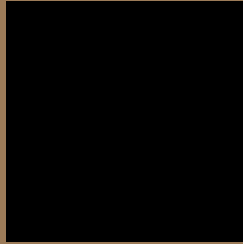
Any Text WCAG AA ✓ Pass

Large Text (above 18pt) WCAG AAA ✓ Pass

Any Text WCAG AAA × Fail

If you want to check with other color combinations, try the [Color Contrast Checker](#).

Android 4288445272 Background



This preview shows how black text looks on a background with the Android color 4288445272.



This preview shows how white text looks on a background with the Android color 4288445272.

Color Blindness Simulation

Color vision deficiency is a very complex topic, and I could not describe the different causes any better than Wikipedia does, so if you want to learn more, you should check out their [article about color blindness](#).

Dichromacy



Original Color
4288445272

Protanopia
4287332699

Deuteranopia
4288379992



Tritanopia
4288706175

Trichromacy



Original Color
4288445272

Protanomaly
4287725402

Deuteranomaly
4288379992

Tritanomaly
4288641137

Monochromacy



Original Color
4288445272

Achromatopsia
4286677377

Achromatomaly
4287332210

CSS Examples

Text

The CSS property to change the color of the text to Android 4288445272 is called "color". The color property can be set on classes, ids or directly on the HTML element.

This example shows how text in the color `rgb(156, 123, 88)` looks like.

```
.text, #text, p{  
    color:rgb(156, 123, 88)  
}
```

If you want to add a text shadow in that color use the text-shadow property, you can generate a text shadow directly with our [CSS Text Shadow Generator](#).

Here you see how black text with a 4 pixel rgb(156, 123, 88) colored shadow looks like.

```
.shadow{ text-shadow: 4px 4px 2px rgb(156, 123, 88) }
```

Border

The CSS property to change the border of an element to Android 4288445272 is called "border". The border property can be set on classes, ids or directly on the HTML element.

This example shows the color as border, it can be applied via the CSS property "border" or "border-color".

```
.border, #border, table{ border:4px solid rgb(156, 123, 88) }
```

If only the border color should be changed use the property `border-color`.

```
.border{ border-color:rgb(156, 123, 88) }
```

If you want to add a box shadow in that color use:

Here you see how a box with a 4 pixel `rgb(156, 123, 88)` colored shadow looks like.

```
.boxshadow{ -moz-box-shadow:4px 4px 4px  
4px rgb(156, 123, 88); -webkit-box-  
shadow:4px 4px 4px 4px rgb(156, 123, 88);  
box-shadow:4px 4px 4px 4px rgb(156, 123,  
88) }
```

Background

The CSS property to change the background color of an element to Android 4288445272 is called "background". The background property can be set on classes, ids or directly on the HTML element.

```
.background, #background, body{  
background: rgb(156, 123, 88) }
```

If only the background color should be changed can be used:

```
.background{ background-color: rgb(156,  
123, 88) }
```

This example shows the color as background, it is applied via the CSS property "background".

To optimize and compress your CSS code, you can use our [online CSS compressor and optimizer](#) based on csstidy. If you want to create a linear or radial gradient as background or border, check our [CSS Gradient Generator](#).

Hey! You found this booklet interesting? Support Converting Colors with the new Membership Option!

The pro membership hides all ads, plus gives you double the colors in the color bucket, and more awesome pro features!

[Learn more, Memberships starting at \\$2.50/m!](#)

**Follow me
on Twitter!**

@ConvertingColor