

Converting Colors

Android(4288507986)

Have a look what the booklet for
Android(4288507986) contains.

Android(4288507986)	3
<i>Conversions</i>	4
<i>Details</i>	6
<i>Harmonies</i>	11
<i>Previews</i>	23
<i>Color Blindness Simulation</i>	26
<i>CSS Examples</i>	29

Color

Android(4288507986)

Conversions

Conversions Part 1

Format	Color
Hex	9D7052
RGB	157, 112, 82
RGB Percent	62%, 44%, 32%
CMY	0.3843, 0.5608, 0.6784
CMYK	0.00, 0.29, 0.48, 0.38
HSL	24°, 31%, 47%
HSV	24°, 48%, 62%
XYZ	21.2218, 19.3656, 10.6021
YIQ	122.0350, 36.4500, 0.2100

Conversions

Conversions Part 2

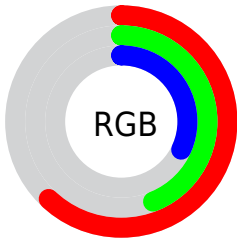
Format	Color
RYB	157, 132, 82
Decimal	10317906
CIELab	51.11, 14.05, 23.70
CIELCh	51, 27.554, 59.331
Yxy	19.3656, 0.4146, 0.3783
Android (android.graphics.Color)	4288507986 (0xFF9D7052)
YUV	122.0350, -19.7373, 30.6643
Hunter-Lab	44.0064, 9.0692, 16.5203

Details

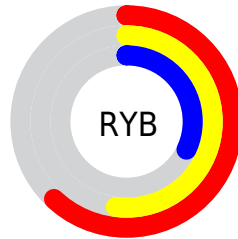
The Android color `4288507986` is a dark color, and the websafe version is hex `996633`. A complement of this color would be `4283596701`, and the grayscale version is `4286216826`.

A 20% lighter version of the original color is `4292191364`, and `4284956708` is the 20% darker color. If you saturate the color by 10%, you get `4288505666`, and if you desaturate by 10%, it is `4288510306`.

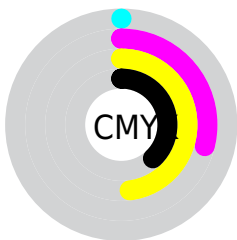
Distribution



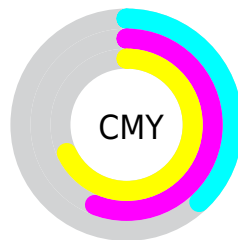
- Red (62%)
- Green (44%)
- Blue (32%)



- Red (62%)
- Yellow (52%)
- Blue (32%)



- Cyan (0%)
- Magenta (29%)
- Yellow (48%)
- Black (38%)



- Cyan (38%)
- Magenta (56%)
- Yellow (68%)

Brightness & Saturation Gradients

These gradients show how the Android color 4288507986 changes by changing the brightness by 10 percent. The first figure shows a shift by +10% for each color and the second figure -10%.

Similar to the brightness gradients but the following saturation gradients show a change of the Android color 4288507986 by changing the saturation by 10% instead.

 4288507986  4288507986


4294967295  4286732091

 4292191364  4284956708

 4294098846  4283247119

 4294958009  4281668864

 4294965205  4280156160

 4294967281  4278190080

 4288507986  4288507986

 4288505666  4288510306

 4288503091  4288512881

■ 4288500771

■ 4288515201

■ 4288498195

■ 4288517777

■ 4288495875

■ 4288520097

■ 4288495360

■ 4288522672

■ 4288524992

■ 4288527312

■ 4288529887

Harmonies

Analogous

The Analogous color harmony consists of three colors that are next to each other on the color wheel.



4289161828



4288507986



4287264842

Triad

The Triadic color harmony groups three colors that are evenly spaced from another and form a triangle on the color wheel.



4288507986



4281894520



4286346403

Complementary

The Complementary color scheme is a pair of colors which are on the opposite of each other on the color wheel.



4288507986



4283596701

Split Complementary

Split-complementary colors differ from the complementary color scheme. The scheme consists of three colors, the original color and two neighbors of the complement color.



4283989160



4288507986



4280452752

Square

The Square scheme is like the rectangle color scheme, but the four colors are evenly spaced on the color wheel.



4288507986



4283860065



4281500322



4288113810

Rectangle

The Rectangle color scheme consists of four colors that form a rectangle on the color wheel.



4288507986



4286217549



4281500322



4285626278

Sweetspot

The Sweet Spot groups the original color and five complimentary colors.



4288507986



4291607471



4288500351



4284898389



4293322470



4284900966

Same Dimension

The Same Dimension uses a secret algorithm to generate beautiful new colors.



4288507986



4291593816



4288517202



4283386439



4287576320



4279174656

Inverse Universe

The Inverse Universe completely reimagines the original color for something new.



4283596701



4283997644



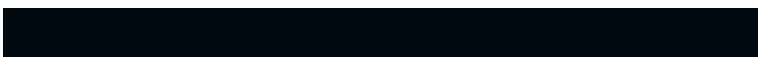
4283586973



4282862671



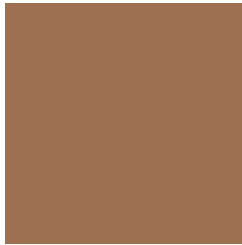
4278212239



4278192399

Previews

White Background



This preview shows how the Android color 4288507986 looks on a white background.

Color Contrast Check

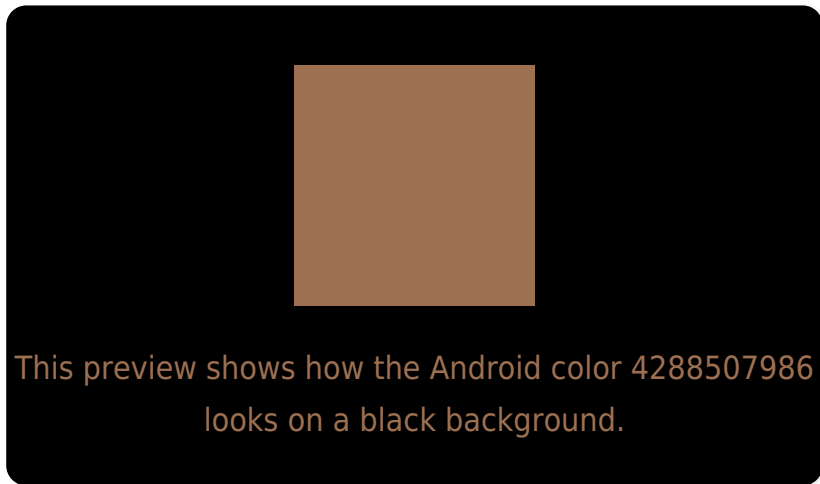
Large Text (above 18pt) WCAG AA ✓ Pass

Any Text WCAG AA ✗ Fail

Large Text (above 18pt) WCAG AAA ✗ Fail

Any Text WCAG AAA ✗ Fail

Black Background



Color Contrast Check

Large Text (above 18pt) WCAG AA ✓ Pass

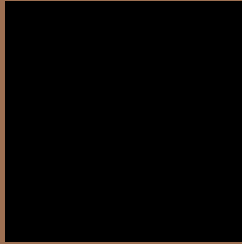
Any Text WCAG AA ✓ Pass

Large Text (above 18pt) WCAG AAA ✓ Pass

Any Text WCAG AAA × Fail

If you want to check with other color combinations, try the [Color Contrast Checker](#).

Android 4288507986 Background



This preview shows how black text looks on a background with the Android color 4288507986.



This preview shows how white text looks on a background with the Android color 4288507986.

Color Blindness Simulation

Color vision deficiency is a very complex topic, and I could not describe the different causes any better than Wikipedia does, so if you want to learn more, you should check out their [article about color blindness](#).

Dichromacy



Original Color
4288507986

Protanopia
4286872150

Deuteranopia
4287788369

Trichromacy



Original Color
4288507986

Protanomaly
4287460949

Deuteranomaly
4288050001

Tritanomaly
4288638312

Monochromacy



Original Color
4288507986

Achromatopsia
4286216826

Achromatomaly
4287067755

CSS Examples

Text

The CSS property to change the color of the text to Android 4288507986 is called "color". The color property can be set on classes, ids or directly on the HTML element.

This example shows how text in the color `rgb(157, 112, 82)` looks like.

```
.text, #text, p{  
    color:rgb(157, 112, 82)  
}
```

If you want to add a text shadow in that color use the text-shadow property, you can generate a text shadow directly with our [CSS Text Shadow Generator](#).

Here you see how black text with a 4 pixel rgb(157, 112, 82) colored shadow looks like.

```
.shadow{ text-shadow: 4px 4px 2px rgb(157, 112, 82) }
```

Border

The CSS property to change the border of an element to Android 4288507986 is called "border". The border property can be set on classes, ids or directly on the HTML element.

This example shows the color as border, it can be applied via the CSS property "border" or "border-color".

```
.border, #border, table{ border:4px solid rgb(157, 112, 82) }
```

If only the border color should be changed use the property `border-color`.

```
.border{ border-color:rgb(157, 112, 82) }
```

If you want to add a box shadow in that color use:

Here you see how a box with a 4 pixel `rgb(157, 112, 82)` colored shadow looks like.

```
.boxshadow{ -moz-box-shadow:4px 4px 4px  
4px rgb(157, 112, 82); -webkit-box-  
shadow:4px 4px 4px 4px rgb(157, 112, 82);  
box-shadow:4px 4px 4px 4px rgb(157, 112,  
82) }
```

Background

The CSS property to change the background color of an element to Android 4288507986 is called "background". The background property can be set on classes, ids or directly on the HTML element.

```
.background, #background, body{  
background: rgb(157, 112, 82) }
```

If only the background color should be changed can be used:

```
.background{ background-color: rgb(157,  
112, 82) }
```

This example shows the color as background, it is applied via the CSS property "background".

To optimize and compress your CSS code, you can use our [online CSS compressor and optimizer](#) based on csstidy. If you want to create a linear or radial gradient as background or border, check our [CSS Gradient Generator](#).

Hey! You found this booklet interesting? Support Converting Colors with the new Membership Option!

The pro membership hides all ads, plus gives you double the colors in the color bucket, and more awesome pro features!

[Learn more, Memberships starting at \\$2.50/m!](#)

**Follow me
on Twitter!**

@ConvertingColor