

# Converting Colors

Android(4288511588)

Have a look what the booklet for  
Android(4288511588) contains.

<b>Android(4288511588)</b> .....	3
<b><i>Conversions</i></b> .....	4
<b><i>Details</i></b> .....	6
<b><i>Harmonies</i></b> .....	11
<b><i>Previews</i></b> .....	23
<b><i>Color Blindness Simulation</i></b> .....	26
<b><i>CSS Examples</i></b> .....	29

# Color

**Android(4288511588)**

# Conversions

## Conversions Part 1

<b>Format</b>	<b>Color</b>
Hex	9D7E64
RGB	157, 126, 100
RGB Percent	62%, 49%, 39%
CMY	0.3843, 0.5059, 0.6078
CMYK	0.00, 0.20, 0.36, 0.38
HSL	27°, 23%, 50%
HSV	27°, 36%, 62%
XYZ	23.6657, 23.0099, 15.2506
YIQ	132.3050, 26.8220, -1.5140

# Conversions

## Conversions Part 2

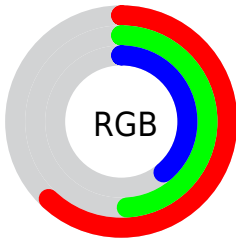
<b>Format</b>	<b>Color</b>
<b>R<sub>YB</sub></b>	157, 148, 100
Decimal	10321508
CIE <sub>Lab</sub>	55.08, 8.17, 18.69
CIE <sub>LCh</sub>	55, 20.396, 66.401
Yxy	23.0099, 0.3822, 0.3716
Android (android.graphics.Color)	4288511588 (0xFF9D7E64)
YUV	132.3050, -15.9264, 21.6575
Hunter-Lab	47.9686, 4.1193, 14.7280

# Details

The Android color **4288511588** is a dark color, and the websafe version is hex **996666**. A complement of this color would be **4284777373**, and the grayscale version is **4286874756**.

A 20% lighter version of the original color is **4292195223**, and **4285025589** is the 20% darker color. If you saturate the color by 10%, you get **4288509268**, and if you desaturate by 10%, it is **4288513908**.

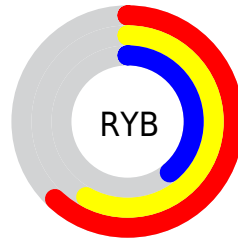
# Distribution



Red (62%)

Green (49%)

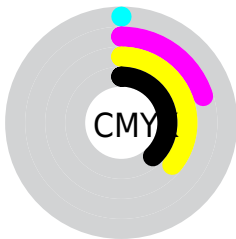
Blue (39%)



Red (62%)

Yellow (58%)

Blue (39%)

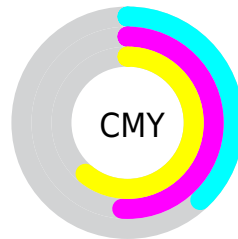


Cyan (0%)

Magenta (20%)

Yellow (36%)

Black (38%)



Cyan (38%)

Magenta (51%)

Yellow (61%)

# Brightness & Saturation Gradients

These gradients show how the Android color 4288511588 changes by changing the brightness by 10 percent. The first figure shows a shift by +10% for each color and the second figure -10%.

Similar to the brightness gradients but the following saturation gradients show a change of the Android color 4288511588 by changing the saturation by 10% instead.





4288511588



4288511588

4294967295



4286735692



4292195223



4285025589



4294037170



4283381279



4294961869



4281803017



4294967274



4280355584



4278190080



4288511588



4288511588



4288509268



4288513908



4288507205



4288515971

■ 4288504885

■ 4288518291

■ 4288502821

■ 4288520355

■ 4288500502

■ 4288522675

■ 4288498438

■ 4288524738

■ 4288497664

■ 4288527058

■ 4288529122

■ 4288531441

# Harmonies

## Analogous

The Analogous color harmony consists of three colors that are next to each other on the color wheel.



4289100144



4288511588



4287464545

# Triad

The Triadic color harmony groups three colors that are evenly spaced from another and form a triangle on the color wheel.



4288511588



4283797127



4287397536

# Complementary

The Complementary color scheme is a pair of colors which are on the opposite of each other on the color wheel.



4288511588



4284777373

# Split Complementary

Split-complementary colors differ from the complementary color scheme. The scheme consists of three colors, the original color and two neighbors of the complement color.



4285826215



4288511588



4283534744

# Square

The Square scheme is like the rectangle color scheme, but the four colors are evenly spaced on the color wheel.



4288511588



4284845429



4284320164



4288575890

# Rectangle

The Rectangle color scheme consists of four colors that form a rectangle on the color wheel.



4288511588



4286613604



4284320164



4286873763



# Sweetspot

The Sweet Spot groups the original color and five complimentary colors.



4288511588



4291608758



4288504963



4284899161



4293322470



4284900966



# Same Dimension

The Same Dimension uses a secret algorithm to generate beautiful new colors.



4288511588



4291599218



4288518756



4283386695



4287578368



4279174912



# Inverse Universe

The Inverse Universe completely reimagines the original color for something new.



4284777373



4285703116



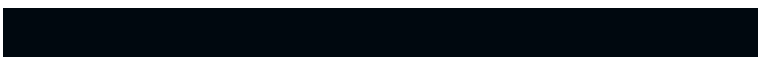
4284770205



4282862415



4278210191

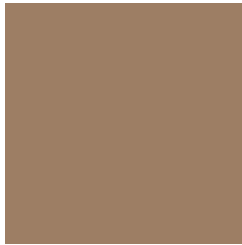


4278192143



# Previews

## White Background



This preview shows how the Android color 4288511588 looks on a white background.

## Color Contrast Check

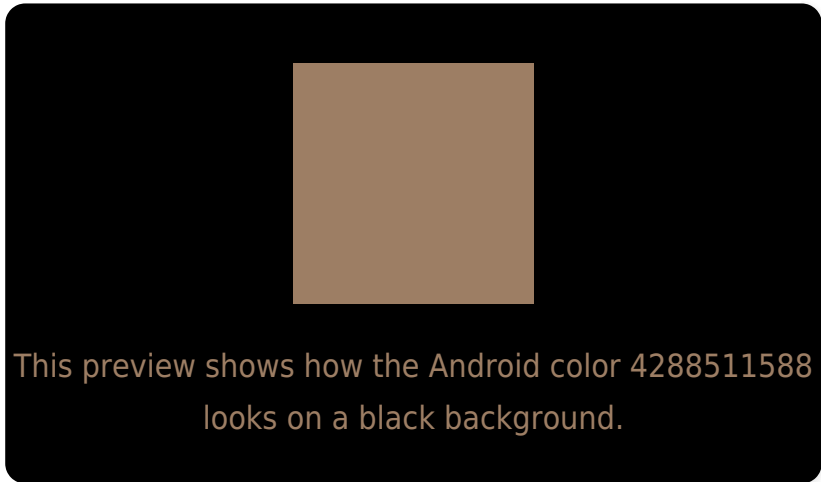
Large Text (above 18pt) WCAG AA ✓ Pass

Any Text WCAG AA ✗ Fail

Large Text (above 18pt) WCAG AAA ✗ Fail

Any Text WCAG AAA ✗ Fail

# Black Background



## Color Contrast Check

Large Text (above 18pt) WCAG AA ✓ Pass

Any Text WCAG AA ✓ Pass

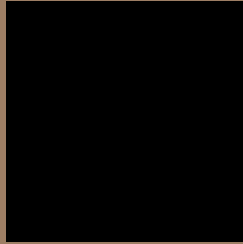
Large Text (above 18pt) WCAG AAA ✓ Pass

Any Text WCAG AAA × Fail

If you want to check with other color combinations, try the [Color Contrast Checker](#).



# Android 4288511588 Background



This preview shows how black text looks on a background with the Android color 4288511588.



This preview shows how white text looks on a background with the Android color 4288511588.

# Color Blindness Simulation

Color vision deficiency is a very complex topic, and I could not describe the different causes any better than Wikipedia does, so if you want to learn more, you should check out their [article about color blindness](#).

## Dichromacy



**Original Color**

[4288511588](#)

**Protanopia**

[4287464551](#)

**Deuteranopia**

[4288380772](#)



# Trichromacy



**Original Color**  
4288511588

**Protanomaly**  
4287857254

**Deuteranomaly**  
4288446308

**Tritanomaly**  
4288641912

# Monochromacy



**Original Color**  
4288511588

**Achromatopsia**  
4286874756

**Achromatomaly**  
4287464056

# CSS Examples

## Text

The CSS property to change the color of the text to Android 4288511588 is called "color". The color property can be set on classes, ids or directly on the HTML element.

This example shows how text in the color `rgb(157, 126, 100)` looks like.

```
.text, #text, p{  
    color:rgb(157, 126, 100)  
}
```

If you want to add a text shadow in that color use the text-shadow property, you can generate a text shadow directly with our [CSS Text Shadow Generator](#).

Here you see how black text with a 4 pixel rgb(157, 126, 100) colored shadow looks like.

```
.shadow{ text-shadow: 4px 4px 2px rgb(157, 126, 100) }
```

## Border

The CSS property to change the border of an element to Android 4288511588 is called "border". The border property can be set on classes, ids or directly on the HTML element.

This example shows the color as border, it can be applied via the CSS property "border" or "border-color".

```
.border, #border, table{ border:4px solid rgb(157, 126, 100) }
```

If only the border color should be changed use the property `border-color`.

```
.border{ border-color:rgb(157, 126, 100) }
```

If you want to add a box shadow in that color use:

Here you see how a box with a 4 pixel `rgb(157, 126, 100)` colored shadow looks like.

```
.boxshadow{ -moz-box-shadow:4px 4px 4px  
4px rgb(157, 126, 100); -webkit-box-  
shadow:4px 4px 4px 4px rgb(157, 126, 100);  
box-shadow:4px 4px 4px 4px rgb(157, 126,  
100) }
```

# Background

The CSS property to change the background color of an element to Android 4288511588 is called "background". The background property can be set on classes, ids or directly on the HTML element.

```
.background, #background, body{  
background: rgb(157, 126, 100) }
```

If only the background color should be changed can be used:

```
.background{ background-color: rgb(157,  
126, 100) }
```

This example shows the color as background, it is applied via the CSS property "background".

To optimize and compress your CSS code, you can use our [online CSS compressor and optimizer](#) based on csstidy. If you want to create a linear or radial gradient as background or border, check our [CSS Gradient Generator](#).



Hey! You found this booklet interesting? Support Converting Colors with the new Membership Option!

The pro membership hides all ads, plus gives you double the colors in the color bucket, and more awesome pro features!

**[Learn more, Memberships starting at \\$2.50/m!](#)**

**Follow me  
on Twitter!**

@ConvertingColor