

Converting Colors

Android(4288573775)

Have a look what the booklet for
Android(4288573775) contains.

Android(4288573775)	3
<i>Conversions</i>	4
<i>Details</i>	6
<i>Harmonies</i>	11
<i>Previews</i>	23
<i>Color Blindness Simulation</i>	26
<i>CSS Examples</i>	29

Color

Android(4288573775)

Conversions

Conversions Part 1

Format	Color
Hex	9E714F
RGB	158, 113, 79
RGB Percent	62%, 44%, 31%
CMY	0.3804, 0.5569, 0.6902
CMYK	0.00, 0.28, 0.50, 0.38
HSL	26°, 33%, 46%
HSV	26°, 50%, 62%
XYZ	21.4170, 19.6439, 10.0600
YIQ	122.5790, 37.7340, -1.0340

Conversions

Conversions Part 2

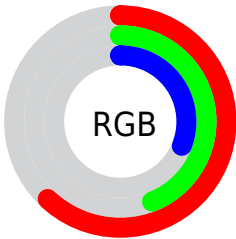
Format	Color
R_{YB}	158, 139, 79
Decimal	10383695
CIE _{Lab}	51.43, 13.60, 25.85
CIE _{LCh}	51, 29.208, 62.243
Yxy	19.6439, 0.4189, 0.3843
Android (android.graphics.Color)	4288573775 (0xFF9E714F)
YUV	122.5790, -21.4844, 31.0642
Hunter-Lab	44.3214, 8.6922, 17.5675

Details

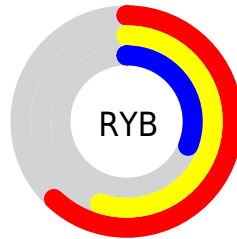
The Android color `4288573775` is a dark color, and the websafe version is hex `996633`. A complement of this color would be `4283399326`, and the grayscale version is `4286282619`.

A 20% lighter version of the original color is `4292322689`, and `4285022498` is the 20% darker color. If you saturate the color by 10%, you get `4288571455`, and if you desaturate by 10%, it is `4288576095`.

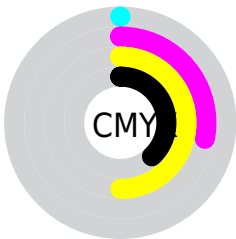
Distribution



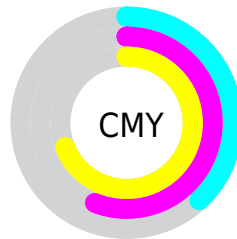
- Red (62%)
- Green (44%)
- Blue (31%)



- Red (62%)
- Yellow (55%)
- Blue (31%)



- Cyan (0%)
- Magenta (28%)
- Yellow (50%)
- Black (38%)



- Cyan (38%)
- Magenta (56%)
- Yellow (69%)

Brightness & Saturation Gradients

These gradients show how the Android color 4288573775 changes by changing the brightness by 10 percent. The first figure shows a shift by +10% for each color and the second figure -10%.

Similar to the brightness gradients but the following saturation gradients show a change of the Android color 4288573775 by changing the saturation by 10% instead.



4288573775



4288573775

4294967295



4286797880



4292322689



4285022498



4294230171



4283312908



4294958262



4281669120



4294965457



4280156160



4294967278



4278190080



4288573775



4288573775



4288571455



4288576095



4288569135



4288578415

 4288566816

 4288580734

 4288564496

 4288583054

 4288562176

 4288585374

 4288587694

 4288590014

 4288592333

 4288594653

Harmonies

Analogous

The Analogous color harmony consists of three colors that are next to each other on the color wheel.



4289358433



4288573775



4287199816

Triad

The Triadic color harmony groups three colors that are evenly spaced from another and form a triangle on the color wheel.



4288573775



4281305212



4286608293

Complementary

The Complementary color scheme is a pair of colors which are on the opposite of each other on the color wheel.



4288573775



4283399326

Split Complementary

Split-complementary colors differ from the complementary color scheme. The scheme consists of three colors, the original color and two neighbors of the complement color.



4284120236



4288573775



4279404436

Square

The Square scheme is like the rectangle color scheme, but the four colors are evenly spaced on the color wheel.



4288573775



4283532898



4281238438



4288441234

Rectangle

The Rectangle color scheme consists of four colors that form a rectangle on the color wheel.



4288573775



4286086988



4281238438



4285822633

Sweetspot

The Sweet Spot groups the original color and five complimentary colors.



4288573775



4291804592



4288565117



4285095510



4293454056



4285098345

Same Dimension

The Same Dimension uses a secret algorithm to generate beautiful new colors.



4288573775



4291790931



4288583503



4283386695



4287577344



4279174912

Inverse Universe

The Inverse Universe completely reimagines the original color for something new.



4283399326



4283668943



4283389598



4282862671



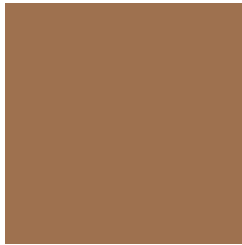
4278210959



4278192399

Previews

White Background



This preview shows how the Android color 4288573775 looks on a white background.

Color Contrast Check

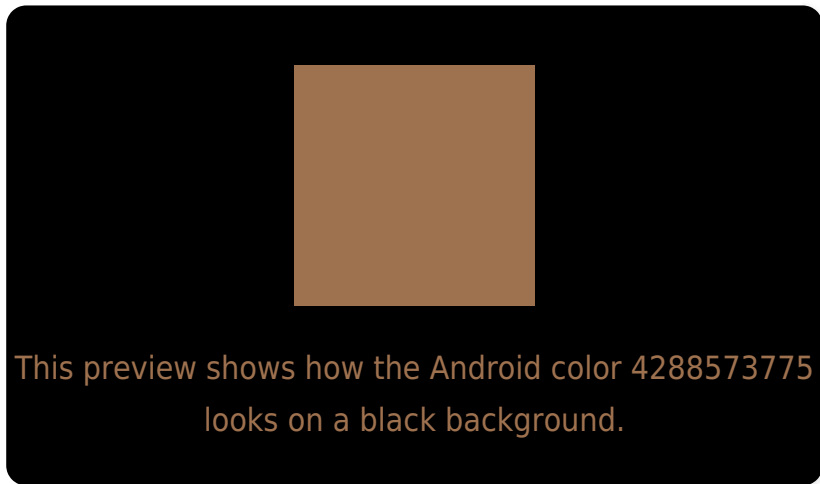
Large Text (above 18pt) WCAG AA ✓ Pass

Any Text WCAG AA ✗ Fail

Large Text (above 18pt) WCAG AAA ✗ Fail

Any Text WCAG AAA ✗ Fail

Black Background



Color Contrast Check

Large Text (above 18pt) WCAG AA ✓ Pass

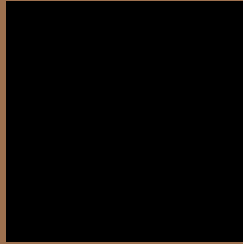
Any Text WCAG AA ✓ Pass

Large Text (above 18pt) WCAG AAA ✓ Pass

Any Text WCAG AAA × Fail

If you want to check with other color combinations, try the [Color Contrast Checker](#).

Android 4288573775 Background



This preview shows how black text looks on a background with the Android color 4288573775.



This preview shows how white text looks on a background with the Android color 4288573775.

Color Blindness Simulation

Color vision deficiency is a very complex topic, and I could not describe the different causes any better than Wikipedia does, so if you want to learn more, you should check out their [article about color blindness](#).

Dichromacy



Original Color


4288573775

Protanopia

4286937939

Deuteranopia

4287919438



Tritanopia
4288769140

Trichromacy



Original Color
4288573775

Protanomaly
4287526738

Deuteranomaly
4288181326

Tritanomaly
4288704103

Monochromacy



Original Color
4288573775

Achromatopsia
4286282619

Achromatomaly
4287133547

CSS Examples

Text

The CSS property to change the color of the text to Android 4288573775 is called "color". The color property can be set on classes, ids or directly on the HTML element.

This example shows how text in the color `rgb(158, 113, 79)` looks like.

```
.text, #text, p{  
    color:rgb(158, 113, 79)  
}
```

If you want to add a text shadow in that color use the text-shadow property, you can generate a text shadow directly with our [CSS Text Shadow Generator](#).

Here you see how black text with a 4 pixel rgb(158, 113, 79) colored shadow looks like.

```
.shadow{ text-shadow: 4px 4px 2px rgb(158, 113, 79) }
```

Border

The CSS property to change the border of an element to Android 4288573775 is called "border". The border property can be set on classes, ids or directly on the HTML element.

This example shows the color as border, it can be applied via the CSS property "border" or "border-color".

```
.border, #border, table{ border:4px solid rgb(158, 113, 79) }
```

If only the border color should be changed use the property `border-color`.

```
.border{ border-color:rgb(158, 113, 79) }
```

If you want to add a box shadow in that color use:

Here you see how a box with a 4 pixel `rgb(158, 113, 79)` colored shadow looks like.

```
.boxshadow{ -moz-box-shadow:4px 4px 4px  
4px rgb(158, 113, 79); -webkit-box-  
shadow:4px 4px 4px 4px rgb(158, 113, 79);  
box-shadow:4px 4px 4px 4px rgb(158, 113,  
79) }
```

Background

The CSS property to change the background color of an element to Android 4288573775 is called "background". The background property can be set on classes, ids or directly on the HTML element.

```
.background, #background, body{  
background: rgb(158, 113, 79) }
```

If only the background color should be changed can be used:

```
.background{ background-color: rgb(158,  
113, 79) }
```

This example shows the color as background, it is applied via the CSS property "background".

To optimize and compress your CSS code, you can use our [online CSS compressor and optimizer](#) based on csstidy. If you want to create a linear or radial gradient as background or border, check our [CSS Gradient Generator](#).

Hey! You found this booklet interesting? Support Converting Colors with the new Membership Option!

The pro membership hides all ads, plus gives you double the colors in the color bucket, and more awesome pro features!

[Learn more, Memberships starting at \\$2.50/m!](#)

**Follow me
on Twitter!**

@ConvertingColor