

Converting Colors

Android(4288575319)

Have a look what the booklet for
Android(4288575319) contains.

Android(4288575319)	3
<i>Conversions</i>	4
<i>Details</i>	6
<i>Harmonies</i>	11
<i>Previews</i>	23
<i>Color Blindness Simulation</i>	26
<i>CSS Examples</i>	29

Color

Android(4288575319)

Conversions

Conversions Part 1

Format	Color
Hex	9E7757
RGB	158, 119, 87
RGB Percent	62%, 47%, 34%
CMY	0.3804, 0.5333, 0.6588
CMYK	0.00, 0.25, 0.45, 0.38
HSL	27°, 29%, 48%
HSV	27°, 45%, 62%
XYZ	22.4177, 21.1509, 11.9178
YIQ	127.0130, 33.5160, -1.6840

Conversions

Conversions Part 2

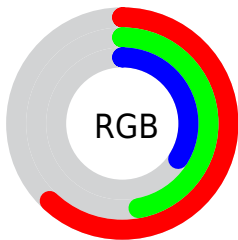
Format	Color
RYB	158, 145, 87
Decimal	10385239
CIELab	53.11, 11.02, 23.49
CIELCh	53, 25.949, 64.870
Yxy	21.1509, 0.4040, 0.3812
Android (android.graphics.Color)	4288575319 (0xFF9E7757)
YUV	127.0130, -19.7264, 27.1756
Hunter-Lab	45.9901, 6.5265, 16.8287

Details

The Android color **4288575319** is a dark color, and the websafe version is hex **996633**. A complement of this color would be **4283924126**, and the grayscale version is **4286545791**.

A 20% lighter version of the original color is **4292258697**, and **4285089577** is the 20% darker color. If you saturate the color by 10%, you get **4288572999**, and if you desaturate by 10%, it is **4288577639**.

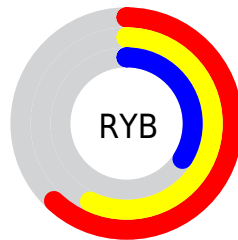
Distribution



Red (62%)

Green (47%)

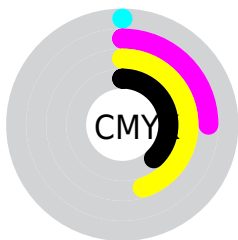
Blue (34%)



Red (62%)

Yellow (57%)

Blue (34%)

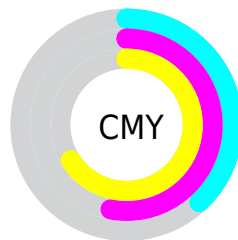


Cyan (0%)

Magenta (25%)

Yellow (45%)

Black (38%)



Cyan (38%)

Magenta (53%)

Yellow (66%)

Brightness & Saturation Gradients

These gradients show how the Android color 4288575319 changes by changing the brightness by 10 percent. The first figure shows a shift by +10% for each color and the second figure -10%.

Similar to the brightness gradients but the following saturation gradients show a change of the Android color 4288575319 by changing the saturation by 10% instead.



4288575319



4288575319

4294967295



4286799423



4292258697



4285089577



4294166436



4283379732



4294960063



4281801472



4294967259



4280222208



4294967287



4278190080



4288575319



4288575319



4288572999



4288577639



4288570935



4288579703

 4288568616

 4288582022

 4288566296

 4288584342

 4288564232

 4288586406

 4288562944

 4288588726

 4288591046

 4288593109

 4288595429

Harmonies

Analogous

The Analogous color harmony consists of three colors that are next to each other on the color wheel.



4289294438



4288575319



4287332178

Triad

The Triadic color harmony groups three colors that are evenly spaced from another and form a triangle on the color wheel.



4288575319



4282354562



4287068323

Complementary

The Complementary color scheme is a pair of colors which are on the opposite of each other on the color wheel.



4288575319



4283924126

Split Complementary

Split-complementary colors differ from the complementary color scheme. The scheme consists of three colors, the original color and two neighbors of the complement color.



4284907691



4288575319



4281567896

Square

The Square scheme is like the rectangle color scheme, but the four colors are evenly spaced on the color wheel.



4288575319



4283992427



4282746535



4288573842

Rectangle

The Rectangle color scheme consists of four colors that form a rectangle on the color wheel.



4288575319



4286284630



4282746535



4286413479

Sweetspot

The Sweet Spot groups the original color and five complimentary colors.



4288575319



4291805364



4288567166



4285095768



4293454056



4285098345

Same Dimension

The Same Dimension uses a secret algorithm to generate beautiful new colors.



4288575319



4291793247



4288584279



4283386695



4287578112



4279174912

Inverse Universe

The Inverse Universe completely reimagines the original color for something new.



4283924126



4284456143



4283915166



4282862415



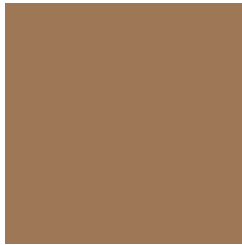
4278210191



4278192143

Previews

White Background



This preview shows how the Android color 4288575319 looks on a white background.

Color Contrast Check

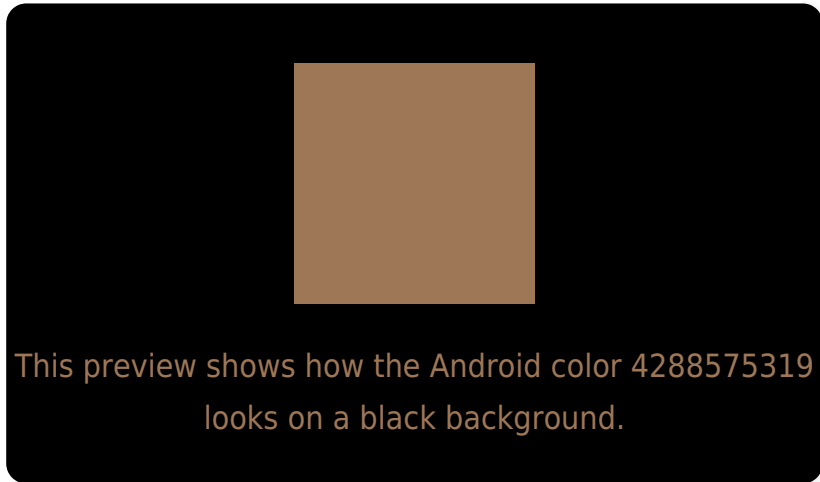
Large Text (above 18pt) WCAG AA ✓ Pass

Any Text WCAG AA ✗ Fail

Large Text (above 18pt) WCAG AAA ✗ Fail

Any Text WCAG AAA ✗ Fail

Black Background



Color Contrast Check

Large Text (above 18pt) WCAG AA ✓ Pass

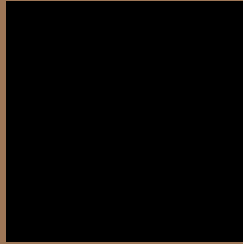
Any Text WCAG AA ✓ Pass

Large Text (above 18pt) WCAG AAA ✓ Pass

Any Text WCAG AAA × Fail

If you want to check with other color combinations, try the [Color Contrast Checker](#).

Android 4288575319 Background



This preview shows how black text looks on a background with the Android color 4288575319.



This preview shows how white text looks on a background with the Android color 4288575319.

Color Blindness Simulation

Color vision deficiency is a very complex topic, and I could not describe the different causes any better than Wikipedia does, so if you want to learn more, you should check out their [article about color blindness](#).

Dichromacy



Original Color
4288575319

Protanopia
4287201114

Deuteranopia
4288182870



Tritanopia
4288770683

Trichromacy



Original Color

4288575319

Protanomaly

4287724633

Deuteranomaly

4288313686

Tritanomaly

4288705646

Monochromacy



Original Color

4288575319

Achromatopsia

4286545791

Achromatomaly

4287265904

CSS Examples

Text

The CSS property to change the color of the text to Android 4288575319 is called "color". The color property can be set on classes, ids or directly on the HTML element.

This example shows how text in the color `rgb(158, 119, 87)` looks like.

```
.text, #text, p{  
    color:rgb(158, 119, 87)  
}
```

If you want to add a text shadow in that color use the text-shadow property, you can generate a text shadow directly with our [CSS Text Shadow Generator](#).

Here you see how black text with a 4 pixel rgb(158, 119, 87) colored shadow looks like.

```
.shadow{ text-shadow: 4px 4px 2px rgb(158, 119, 87) }
```

Border

The CSS property to change the border of an element to Android 4288575319 is called "border". The border property can be set on classes, ids or directly on the HTML element.

This example shows the color as border, it can be applied via the CSS property "border" or "border-color".

```
.border, #border, table{ border:4px solid rgb(158, 119, 87) }
```

If only the border color should be changed use the property `border-color`.

```
.border{ border-color:rgb(158, 119, 87) }
```

If you want to add a box shadow in that color use:

Here you see how a box with a 4 pixel `rgb(158, 119, 87)` colored shadow looks like.

```
.boxshadow{ -moz-box-shadow:4px 4px 4px  
4px rgb(158, 119, 87); -webkit-box-  
shadow:4px 4px 4px 4px rgb(158, 119, 87);  
box-shadow:4px 4px 4px 4px rgb(158, 119,  
87) }
```

Background

The CSS property to change the background color of an element to Android 4288575319 is called "background". The background property can be set on classes, ids or directly on the HTML element.

```
.background, #background, body{  
background: rgb(158, 119, 87) }
```

If only the background color should be changed can be used:

```
.background{ background-color: rgb(158,  
119, 87) }
```

This example shows the color as background, it is applied via the CSS property "background".

To optimize and compress your CSS code, you can use our [online CSS compressor and optimizer](#) based on csstidy. If you want to create a linear or radial gradient as background or border, check our [CSS Gradient Generator](#).

Hey! You found this booklet interesting? Support Converting Colors with the new Membership Option!

The pro membership hides all ads, plus gives you double the colors in the color bucket, and more awesome pro features!

[Learn more, Memberships starting at \\$2.50/m!](#)

**Follow me
on Twitter!**

@ConvertingColor