

Converting Colors

Android(4288577895)

Have a look what the booklet for
Android(4288577895) contains.

Android(4288577895)	3
<i>Conversions</i>	4
<i>Details</i>	6
<i>Harmonies</i>	11
<i>Previews</i>	23
<i>Color Blindness Simulation</i>	26
<i>CSS Examples</i>	29

Color

Android(4288577895)

Conversions

Conversions Part 1

Format	Color
Hex	9E8167
RGB	158, 129, 103
RGB Percent	62%, 51%, 40%
CMY	0.3804, 0.4941, 0.5961
CMYK	0.00, 0.18, 0.35, 0.38
HSL	28°, 22%, 51%
HSV	28°, 35%, 62%
XYZ	24.3990, 23.9489, 16.1686
YIQ	134.7070, 25.6300, -1.9380

Conversions

Conversions Part 2

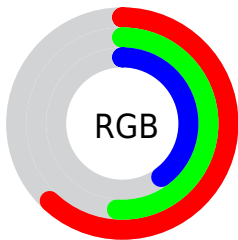
Format	Color
RYB	158, 152, 103
Decimal	10387815
CIELab	56.04, 7.27, 18.29
CIELCh	56, 19.683, 68.328
Yxy	23.9489, 0.3782, 0.3712
Android (android.graphics.Color)	4288577895 (0xFF9E8167)
YUV	134.7070, -15.6316, 20.4280
Hunter-Lab	48.9376, 3.3546, 14.6674

Details

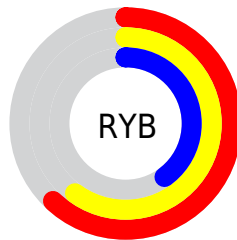
The Android color `4288577895` is a dark color, and the websafe version is hex `996666`. A complement of this color would be `4284974238`, and the grayscale version is `4287072135`.

A 20% lighter version of the original color is `4292261530`, and `4285091896` is the 20% darker color. If you saturate the color by 10%, you get `4288575831`, and if you desaturate by 10%, it is `4288579959`.

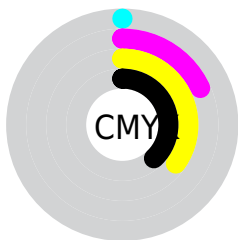
Distribution



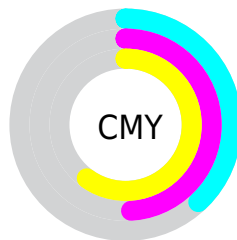
- Red (62%)
- Green (51%)
- Blue (40%)



- Red (62%)
- Yellow (60%)
- Blue (40%)



- Cyan (0%)
- Magenta (18%)
- Yellow (35%)
- Black (38%)



- Cyan (38%)
- Magenta (49%)
- Yellow (60%)

Brightness & Saturation Gradients

These gradients show how the Android color 4288577895 changes by changing the brightness by 10 percent. The first figure shows a shift by +10% for each color and the second figure -10%.

Similar to the brightness gradients but the following saturation gradients show a change of the Android color 4288577895 by changing the saturation by 10% instead.



4288577895



4288577895

4294967295



4286801999



4292261530



4285091896



4294103477



4283447586



4294962897



4281869069



4294967277



4280422144



4278190080



4288577895



4288577895



4288575831



4288579959



4288573511



4288582279

 4288571448

 4288584342

 4288569384

 4288586406

 4288567064

 4288588726

 4288565000

 4288590790

 4288563968

 4288592854

 4288595173

 4288597237

Harmonies

Analogous

The Analogous color harmony consists of three colors that are next to each other on the color wheel.



4289231986



4288577895



4287530852

Triad

The Triadic color harmony groups three colors that are evenly spaced from another and form a triangle on the color wheel.



4288577895



4284059787



4287594657

Complementary

The Complementary color scheme is a pair of colors which are on the opposite of each other on the color wheel.



4288577895



4284974238

Split Complementary

Split-complementary colors differ from the complementary color scheme. The scheme consists of three colors, the original color and two neighbors of the complement color.



4286088872



4288577895



4283862939

Square

The Square scheme is like the rectangle color scheme, but the four colors are evenly spaced on the color wheel.



4288577895



4285042553



4284648358



4288707731

Rectangle

The Rectangle color scheme consists of four colors that form a rectangle on the color wheel.



4288577895



4286745192



4284648358



4287136420

Sweetspot

The Sweet Spot groups the original color and five complimentary colors.



4288577895



4291806394



4288571268



4285096540



4293454056



4285098345

Same Dimension

The Same Dimension uses a secret algorithm to generate beautiful new colors.



4288577895



4291797368



4288584807



4283386695



4287579136



4279174912

Inverse Universe

The Inverse Universe completely reimagines the original color for something new.



4284974238



4286097103



4284967326



4282862415



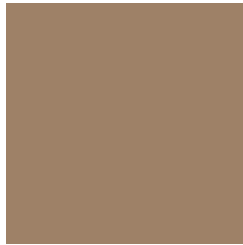
4278209423



4278192143

Previews

White Background



This preview shows how the Android color 4288577895 looks on a white background.

Color Contrast Check

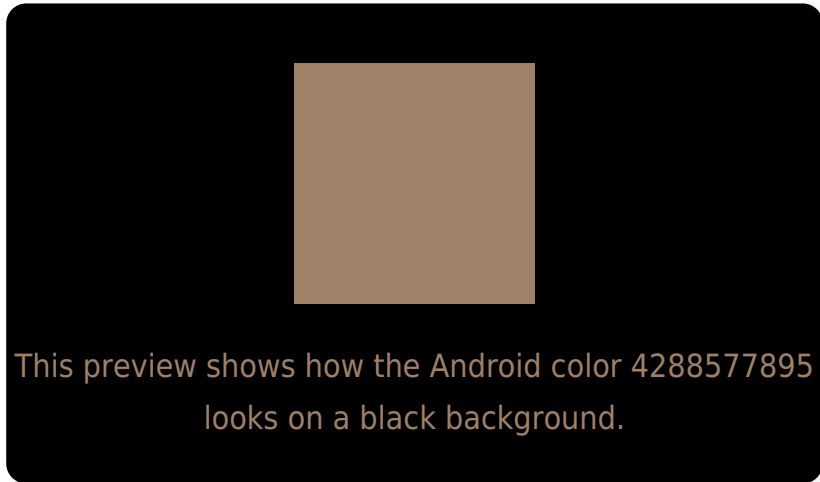
Large Text (above 18pt) WCAG AA ✓ Pass

Any Text WCAG AA ✗ Fail

Large Text (above 18pt) WCAG AAA ✗ Fail

Any Text WCAG AAA ✗ Fail

Black Background



Color Contrast Check

Large Text (above 18pt) WCAG AA ✓ Pass

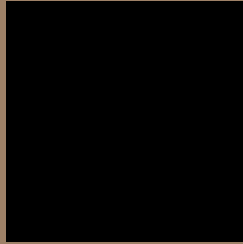
Any Text WCAG AA ✓ Pass

Large Text (above 18pt) WCAG AAA ✓ Pass

Any Text WCAG AAA × Fail

If you want to check with other color combinations, try the [Color Contrast Checker](#).

Android 428577895 Background



This preview shows how black text looks on a background with the Android color 428577895.



This preview shows how white text looks on a background with the Android color 428577895.

Color Blindness Simulation

Color vision deficiency is a very complex topic, and I could not describe the different causes any better than Wikipedia does, so if you want to learn more, you should check out their [article about color blindness](#).


Dichromacy



Original Color
4288577895

Protanopia
4287596137

Deuteranopia
4288577895



Tritanopia
4288773510

Trichromacy



Original Color
4288577895

Protanomaly
4287923304

Deuteranomaly
4288577895

Tritanomaly
4288708219

Monochromacy



Original Color
4288577895

Achromatopsia
4287072135

Achromatomaly
4287595899

CSS Examples

Text

The CSS property to change the color of the text to Android 4288577895 is called "color". The color property can be set on classes, ids or directly on the HTML element.

This example shows how text in the color `rgb(158, 129, 103)` looks like.

```
.text, #text, p{  
    color:rgb(158, 129, 103)  
}
```

If you want to add a text shadow in that color use the text-shadow property, you can generate a text shadow directly with our [CSS Text Shadow Generator](#).

Here you see how black text with a 4 pixel rgb(158, 129, 103) colored shadow looks like.

```
.shadow{ text-shadow: 4px 4px 2px rgb(158, 129, 103) }
```

Border

The CSS property to change the border of an element to Android 4288577895 is called "border". The border property can be set on classes, ids or directly on the HTML element.

This example shows the color as border, it can be applied via the CSS property "border" or "border-color".

```
.border, #border, table{ border:4px solid rgb(158, 129, 103) }
```

If only the border color should be changed use the property `border-color`.

```
.border{ border-color:rgb(158, 129, 103) }
```

If you want to add a box shadow in that color use:

Here you see how a box with a 4 pixel `rgb(158, 129, 103)` colored shadow looks like.

```
.boxshadow{ -moz-box-shadow:4px 4px 4px  
4px rgb(158, 129, 103); -webkit-box-  
shadow:4px 4px 4px 4px rgb(158, 129, 103);  
box-shadow:4px 4px 4px 4px rgb(158, 129,  
103) }
```

Background

The CSS property to change the background color of an element to Android 4288577895 is called "background". The background property can be set on classes, ids or directly on the HTML element.

```
.background, #background, body{  
background: rgb(158, 129, 103) }
```

If only the background color should be changed can be used:

```
.background{ background-color: rgb(158,  
129, 103) }
```

This example shows the color as background, it is applied via the CSS property "background".

To optimize and compress your CSS code, you can use our [online CSS compressor and optimizer](#) based on csstidy. If you want to create a linear or radial gradient as background or border, check our [CSS Gradient Generator](#).

Hey! You found this booklet interesting? Support Converting Colors with the new Membership Option!

The pro membership hides all ads, plus gives you double the colors in the color bucket, and more awesome pro features!

[Learn more, Memberships starting at \\$2.50/m!](#)

**Follow me
on Twitter!**

@ConvertingColor