

Converting Colors

Android(4288638019)

Have a look what the booklet for
Android(4288638019) contains.

Android(4288638019)	3
<i>Conversions</i>	4
<i>Details</i>	6
<i>Harmonies</i>	11
<i>Previews</i>	23
<i>Color Blindness Simulation</i>	26
<i>CSS Examples</i>	29

Color

Android(4288638019)

Conversions

Conversions Part 1

Format	Color
Hex	9F6C43
RGB	159, 108, 67
RGB Percent	62%, 42%, 26%
CMY	0.3765, 0.5765, 0.7373
CMYK	0.00, 0.32, 0.58, 0.38
HSL	27°, 41%, 44%
HSV	27°, 58%, 62%
XYZ	20.6738, 18.5013, 7.7917
YIQ	118.5750, 43.5570, -1.9390

Conversions

Conversions Part 2

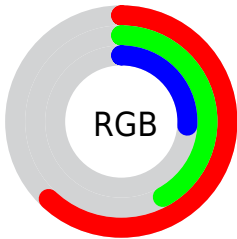
Format	Color
R_{YB}	159, 141, 67
Decimal	10447939
CIE _{Lab}	50.10, 15.79, 30.93
CIE _{LCh}	50, 34.727, 62.955
Yxy	18.5013, 0.4402, 0.3939
Android (android.graphics.Color)	4288638019 (0xFF9F6C43)
YUV	118.5750, -25.4265, 35.4527
Hunter-Lab	43.0131, 10.5209, 19.3690

Details

The Android color **4288638019** is a dark color, and the websafe version is hex **996633**. A complement of this color would be **4282611359**, and the grayscale version is **4286019447**.

A 20% lighter version of the original color is **4292386932**, and **4285021206** is the 20% darker color. If you saturate the color by 10%, you get **4288635699**, and if you desaturate by 10%, it is **4288640339**.

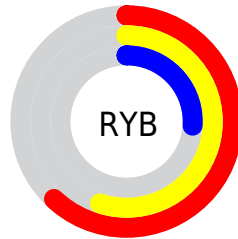
Distribution



Red (62%)

Green (42%)

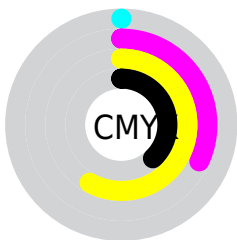
Blue (26%)



Red (62%)

Yellow (55%)

Blue (26%)

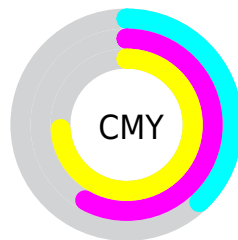


Cyan (0%)

Magenta (32%)

Yellow (58%)

Black (38%)



Cyan (38%)

Magenta (58%)

Yellow (74%)

Brightness & Saturation Gradients

These gradients show how the Android color 4288638019 changes by changing the brightness by 10 percent. The first figure shows a shift by +10% for each color and the second figure -10%.

Similar to the brightness gradients but the following saturation gradients show a change of the Android color 4288638019 by changing the saturation by 10% instead.



4288638019



4288638019

4294967295



4286796844



4292386932



4285021206



4294359950



4283311616



4294956712



4281602304



4294964164



4280156161



4294967264



4278190080

4294967293



4288638019



4288638019



4288635699



4288640339

■ 4288633379

■ 4288642659

■ 4288631315

■ 4288644723

■ 4288628995

■ 4288647043

■ 4288628480

■ 4288649363

■ 4288651682

■ 4288654002

■ 4288656322

■ 4288658386

Harmonies

Analogous

The Analogous color harmony consists of three colors that are next to each other on the color wheel.



4289553241



4288638019



4287067707

Triad

The Triadic color harmony groups three colors that are evenly spaced from another and form a triangle on the color wheel.



4288638019



4278224761



4286475945

Complementary

The Complementary color scheme is a pair of colors which are on the opposite of each other on the color wheel.



4288638019



4282611359

Split Complementary

Split-complementary colors differ from the complementary color scheme. The scheme consists of three colors, the original color and two neighbors of the complement color.



4283267506



4288638019



4278224534

Square

The Square scheme is like the rectangle color scheme, but the four colors are evenly spaced on the color wheel.



4288638019



4282549339



4278223275



4288570515

Rectangle

The Rectangle color scheme consists of four colors that form a rectangle on the color wheel.



4288638019



4285758527



4278223275



4285493934

Sweetspot

The Sweet Spot groups the original color and five complimentary colors.



4288638019



4291804075



4288627575



4285095252



4293454056



4285098345

Same Dimension

The Same Dimension uses a secret algorithm to generate beautiful new colors.



4288638019



4291788864



4288649539



4283386695



4287578112



4279174912

Inverse Universe

The Inverse Universe completely reimagines the original color for something new.



4282611359



4282421199



4282599839



4282862671



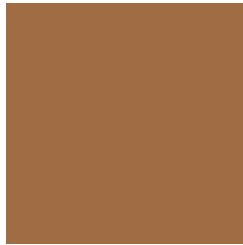
4278210447



4278192143

Previews

White Background



This preview shows how the Android color 4288638019 looks on a white background.

Color Contrast Check

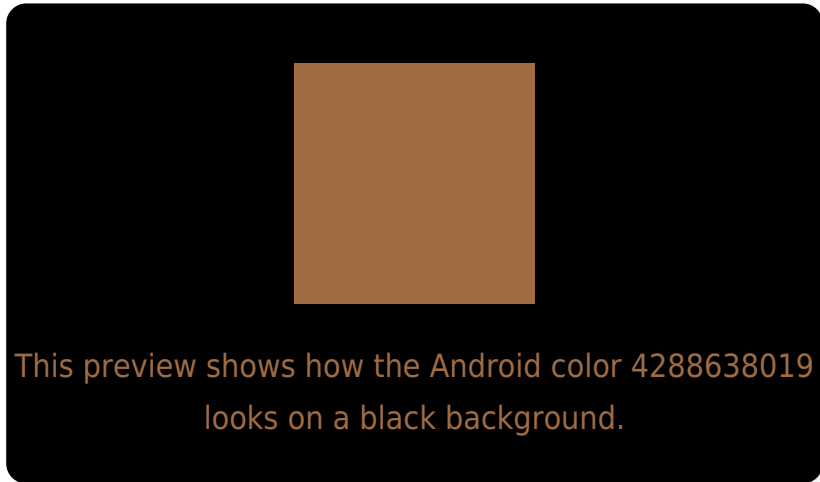
Large Text (above 18pt) WCAG AA ✓ Pass

Any Text WCAG AA ✗ Fail

Large Text (above 18pt) WCAG AAA ✗ Fail

Any Text WCAG AAA ✗ Fail

Black Background



Color Contrast Check

Large Text (above 18pt) WCAG AA ✓ Pass

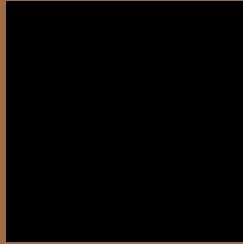
Any Text WCAG AA ✓ Pass

Large Text (above 18pt) WCAG AAA ✓ Pass

Any Text WCAG AAA × Fail

If you want to check with other color combinations, try the [Color Contrast Checker](#).

Android 4288638019 Background



This preview shows how black text looks on a background with the Android color 4288638019.



This preview shows how white text looks on a background with the Android color 4288638019.

Color Blindness Simulation

Color vision deficiency is a very complex topic, and I could not describe the different causes any better than Wikipedia does, so if you want to learn more, you should check out their [article about color blindness](#).

Dichromacy



Original Color

4288638019

Protanopia

4286806087

Deuteranopia

4287787586

Trichromacy



Original Color
4288638019

Protanomaly
4287460422

Deuteranomaly
4288114754

Tritanomaly
4288768350

Monochromacy



Original Color
4288638019

Achromatopsia
4286019447

Achromatomaly
4287001444

CSS Examples

Text

The CSS property to change the color of the text to Android 4288638019 is called "color". The color property can be set on classes, ids or directly on the HTML element.

This example shows how text in the color `rgb(159, 108, 67)` looks like.

```
.text, #text, p{  
    color:rgb(159, 108, 67)  
}
```

If you want to add a text shadow in that color use the text-shadow property, you can generate a text shadow directly with our [CSS Text Shadow Generator](#).

Here you see how black text with a 4 pixel rgb(159, 108, 67) colored shadow looks like.

```
.shadow{ text-shadow: 4px 4px 2px rgb(159, 108, 67) }
```

Border

The CSS property to change the border of an element to Android 4288638019 is called "border". The border property can be set on classes, ids or directly on the HTML element.

This example shows the color as border, it can be applied via the CSS property "border" or "border-color".

```
.border, #border, table{ border:4px solid rgb(159, 108, 67) }
```

If only the border color should be changed use the property `border-color`.

```
.border{ border-color:rgb(159, 108, 67) }
```

If you want to add a box shadow in that color use:

Here you see how a box with a 4 pixel `rgb(159, 108, 67)` colored shadow looks like.

```
.boxshadow{ -moz-box-shadow:4px 4px 4px  
4px rgb(159, 108, 67); -webkit-box-  
shadow:4px 4px 4px 4px rgb(159, 108, 67);  
box-shadow:4px 4px 4px 4px rgb(159, 108,  
67) }
```

Background

The CSS property to change the background color of an element to Android 4288638019 is called "background". The background property can be set on classes, ids or directly on the HTML element.

```
.background, #background, body{  
background: rgb(159, 108, 67) }
```

If only the background color should be changed can be used:

```
.background{ background-color: rgb(159,  
108, 67) }
```

This example shows the color as background, it is applied via the CSS property "background".

To optimize and compress your CSS code, you can use our [online CSS compressor and optimizer](#) based on csstidy. If you want to create a linear or radial gradient as background or border, check our [CSS Gradient Generator](#).

Hey! You found this booklet interesting? Support Converting Colors with the new Membership Option!

The pro membership hides all ads, plus gives you double the colors in the color bucket, and more awesome pro features!

[Learn more, Memberships starting at \\$2.50/m!](#)

**Follow me
on Twitter!**

@ConvertingColor