

Converting Colors

Android(4288641620)

Have a look what the booklet for
Android(4288641620) contains.

Android(4288641620)	3
<i>Conversions</i>	4
<i>Details</i>	6
<i>Harmonies</i>	11
<i>Previews</i>	23
<i>Color Blindness Simulation</i>	26
<i>CSS Examples</i>	29

Color

Android(4288641620)

Conversions

Conversions Part 1

Format	Color
Hex	9F7A54
RGB	159, 122, 84
RGB Percent	62%, 48%, 33%
CMY	0.3765, 0.5216, 0.6706
CMYK	0.00, 0.23, 0.47, 0.38
HSL	30°, 31%, 48%
HSV	30°, 47%, 62%
XYZ	22.8578, 21.9301, 11.4157
YIQ	128.7310, 34.2500, -3.9740

Conversions

Conversions Part 2

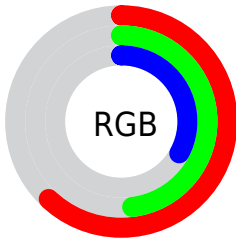
Format	Color
RYB	157, 159, 84
Decimal	10451540
CIELab	53.95, 9.41, 26.30
CIELCh	54, 27.935, 70.306
Yxy	21.9301, 0.4067, 0.3902
Android (android.graphics.Color)	4288641620 (0xFF9F7A54)
YUV	128.7310, -22.0524, 26.5459
Hunter-Lab	46.8296, 5.1753, 18.3275

Details

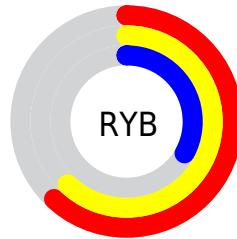
The Android color `4288641620` is a dark color, and the websafe version is hex `996633`. A complement of this color would be `4283726239`, and the grayscale version is `4286677377`.

A 20% lighter version of the original color is `4292324998`, and `4285090086` is the 20% darker color. If you saturate the color by 10%, you get `4288639556`, and if you desaturate by 10%, it is `4288643684`.

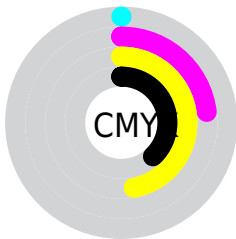
Distribution



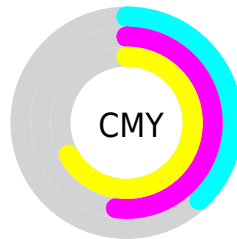
- Red (62%)
- Green (48%)
- Blue (33%)



- Red (62%)
- Yellow (62%)
- Blue (33%)



- Cyan (0%)
- Magenta (23%)
- Yellow (47%)
- Black (38%)



- Cyan (38%)
- Magenta (52%)
- Yellow (67%)

Brightness & Saturation Gradients

These gradients show how the Android color 4288641620 changes by changing the brightness by 10 percent. The first figure shows a shift by +10% for each color and the second figure -10%.

Similar to the brightness gradients but the following saturation gradients show a change of the Android color 4288641620 by changing the saturation by 10% instead.



4288641620



4288641620

4294967295



4286865724



4292324998



4285090086



4294232736



4283446032



4294960828



4281867776



4294967255



4280288768



4294967284



4278190080



4288641620



4288641620



4288639556



4288643684



4288637492



4288645748

 4288635428

 4288647812

 4288633620

 4288649620

 4288631556

 4288651683

 4288631040

 4288653747

 4288655811

 4288657875

 4288659939

Harmonies

Analogous

The Analogous color harmony consists of three colors that are next to each other on the color wheel.



4289557091



4288641620



4287201873

Triad

The Triadic color harmony groups three colors that are evenly spaced from another and form a triangle on the color wheel.



4288641620



4281699977



4287592614

Complementary

The Complementary color scheme is a pair of colors which are on the opposite of each other on the color wheel.



4288641620



4283726239

Split Complementary

Split-complementary colors differ from the complementary color scheme. The scheme consists of three colors, the original color and two neighbors of the complement color.



4285366448



4288641620



4281044383

Square

The Square scheme is like the rectangle color scheme, but the four colors are evenly spaced on the color wheel.



4288641620



4283534704



4282812590



4289098130

Rectangle

The Rectangle color scheme consists of four colors that form a rectangle on the color wheel.



4288641620



4286089047



4282812590



4286872491

Sweetspot

The Sweet Spot groups the original color and five complimentary colors.



4288641620



4291805362



4288631930



4285096023



4293454056



4285098345

Same Dimension

The Same Dimension uses a secret algorithm to generate beautiful new colors.



4288641620



4291794009



4288651092



4283386695



4287580160



4279175168

Inverse Universe

The Inverse Universe completely reimagines the original color for something new.



4283726239



4284060623



4283716767



4282862415



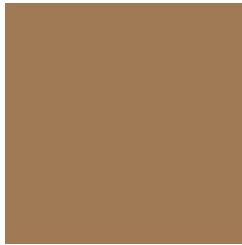
4278208143



4278192143

Previews

White Background



This preview shows how the Android color 4288641620 looks on a white background.

Color Contrast Check

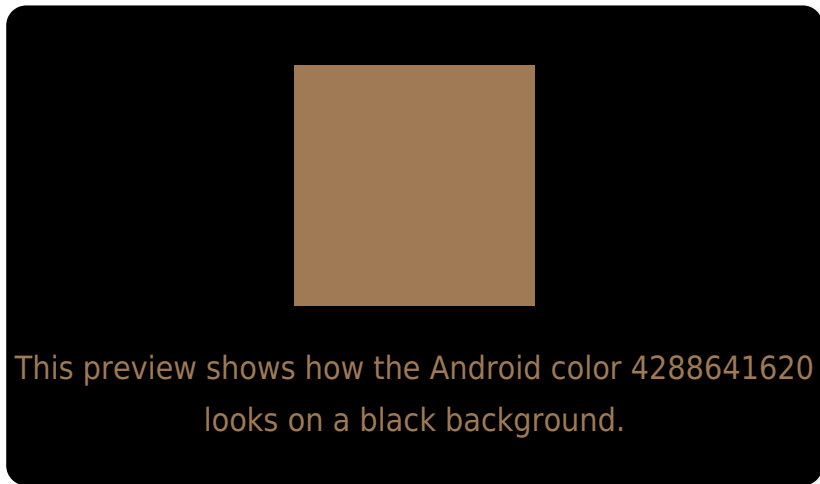
Large Text (above 18pt) WCAG AA ✓ Pass

Any Text WCAG AA ✗ Fail

Large Text (above 18pt) WCAG AAA ✗ Fail

Any Text WCAG AAA ✗ Fail

Black Background



Color Contrast Check

Large Text (above 18pt) WCAG AA ✓ Pass

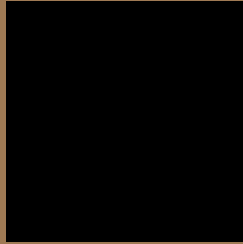
Any Text WCAG AA ✓ Pass

Large Text (above 18pt) WCAG AAA ✓ Pass

Any Text WCAG AAA × Fail

If you want to check with other color combinations, try the [Color Contrast Checker](#).

Android 4288641620 Background



This preview shows how black text looks on a background with the Android color 4288641620.



This preview shows how white text looks on a background with the Android color 4288641620.

Color Blindness Simulation

Color vision deficiency is a very complex topic, and I could not describe the different causes any better than Wikipedia does, so if you want to learn more, you should check out their [article about color blindness](#).

Dichromacy



Original Color
4288641620

Protanopia
4287398231

Deuteranopia
4288379988

Trichromacy



Original Color
4288641620

Protanomaly
4287856214

Deuteranomaly
4288445268

Tritanomaly
4288837487

Monochromacy



Original Color
4288641620

Achromatopsia
4286677377

Achromatomaly
4287397489

CSS Examples

Text

The CSS property to change the color of the text to Android 4288641620 is called "color". The color property can be set on classes, ids or directly on the HTML element.

This example shows how text in the color `rgb(159, 122, 84)` looks like.

```
.text, #text, p{  
    color:rgb(159, 122, 84)  
}
```

If you want to add a text shadow in that color use the text-shadow property, you can generate a text shadow directly with our [CSS Text Shadow Generator](#).

Here you see how black text with a 4 pixel rgb(159, 122, 84) colored shadow looks like.

```
.shadow{ text-shadow: 4px 4px 2px rgb(159, 122, 84) }
```

Border

The CSS property to change the border of an element to Android 4288641620 is called "border". The border property can be set on classes, ids or directly on the HTML element.

This example shows the color as border, it can be applied via the CSS property "border" or "border-color".

```
.border, #border, table{ border:4px solid rgb(159, 122, 84) }
```

If only the border color should be changed use the property border-color.

```
.border{ border-color:rgb(159, 122, 84) }
```

If you want to add a box shadow in that color use:

Here you see how a box with a 4 pixel rgb(159, 122, 84) colored shadow looks like.

```
.boxshadow{ -moz-box-shadow:4px 4px 4px  
4px rgb(159, 122, 84); -webkit-box-  
shadow:4px 4px 4px 4px rgb(159, 122, 84);  
box-shadow:4px 4px 4px 4px rgb(159, 122,  
84) }
```

Background

The CSS property to change the background color of an element to Android 4288641620 is called "background". The background property can be set on classes, ids or directly on the HTML element.

```
.background, #background, body{  
background: rgb(159, 122, 84) }
```

If only the background color should be changed can be used:

```
.background{ background-color: rgb(159,  
122, 84) }
```

This example shows the color as background, it is applied via the CSS property "background".

To optimize and compress your CSS code, you can use our [online CSS compressor and optimizer](#) based on csstidy. If you want to create a linear or radial gradient as background or border, check our [CSS Gradient Generator](#).

Hey! You found this booklet interesting? Support Converting Colors with the new Membership Option!

The pro membership hides all ads, plus gives you double the colors in the color bucket, and more awesome pro features!

[Learn more, Memberships starting at \\$2.50/m!](#)

**Follow me
on Twitter!**

@ConvertingColor