

# Converting Colors

Android(4288641879)

Have a look what the booklet for  
Android(4288641879) contains.

<b>Android(4288641879)</b> .....	3
<b><i>Conversions</i></b> .....	4
<b><i>Details</i></b> .....	6
<b><i>Harmonies</i></b> .....	11
<b><i>Previews</i></b> .....	23
<b><i>Color Blindness Simulation</i></b> .....	26
<b><i>CSS Examples</i></b> .....	29

# Color

**Android(4288641879)**

# Conversions

## Conversions Part 1

<b>Format</b>	<b>Color</b>
Hex	9F7B57
RGB	159, 123, 87
RGB Percent	62%, 48%, 34%
CMY	0.3765, 0.5176, 0.6588
CMYK	0.00, 0.23, 0.45, 0.38
HSL	30°, 29%, 48%
HSV	30°, 45%, 62%
XYZ	23.1013, 22.2250, 12.0891
YIQ	129.6600, 33.0120, -3.5640

# Conversions

## Conversions Part 2

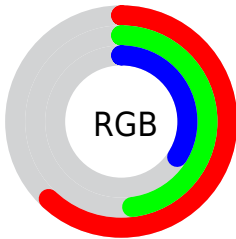
<b>Format</b>	<b>Color</b>
<b>R<sub>YB</sub></b>	159, 159, 87
Decimal	10451799
CIE <sub>Lab</sub>	54.26, 9.17, 25.02
CIE <sub>LCh</sub>	54, 26.647, 69.874
Yxy	22.2250, 0.4024, 0.3871
Android (android.graphics.Color)	4288641879 (0xFF9F7B57)
YUV	129.6600, -21.0314, 25.7312
Hunter-Lab	47.1434, 4.9682, 17.7965

# Details

The Android color `4288641879` is a dark color, and the websafe version is hex `996633`. A complement of this color would be `4283923359`, and the grayscale version is `4286743170`.

A 20% lighter version of the original color is `4292325257`, and `4285155881` is the 20% darker color. If you saturate the color by 10%, you get `4288639815`, and if you desaturate by 10%, it is `4288643943`.

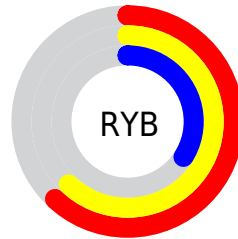
# Distribution



Red (62%)

Green (48%)

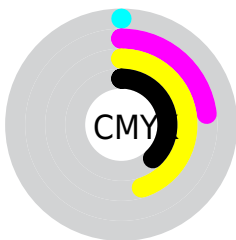
Blue (34%)



Red (62%)

Yellow (62%)

Blue (34%)

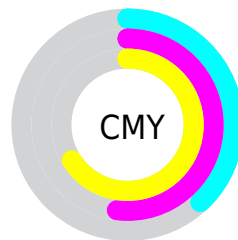


Cyan (0%)

Magenta (23%)

Yellow (45%)

Black (38%)



Cyan (38%)

Magenta (52%)

Yellow (66%)

# Brightness & Saturation Gradients

These gradients show how the Android color 4288641879 changes by changing the brightness by 10 percent. The first figure shows a shift by +10% for each color and the second figure -10%.

Similar to the brightness gradients but the following saturation gradients show a change of the Android color 4288641879 by changing the saturation by 10% instead.





4288641879



4288641879

4294967295



4286865983



4292325257



4285155881



4294232996



4283446291



4294961087



4281867776



4294967259



4280289280



4294967287



4278190080



4288641879



4288641879



4288639815



4288643943



4288637751



4288646007

■ 4288635687

■ 4288648071

■ 4288633623

■ 4288650135

■ 4288631559

■ 4288652198

■ 4288630784

■ 4288654262

■ 4288656326

■ 4288658390

■ 4288660454

# Harmonies

## Analogous

The Analogous color harmony consists of three colors that are next to each other on the color wheel.



4289492069



4288641879



4287267668

# Triad

The Triadic color harmony groups three colors that are evenly spaced from another and form a triangle on the color wheel.



4288641879



4282158729



4287592869

# Complementary

The Complementary color scheme is a pair of colors which are on the opposite of each other on the color wheel.



4288641879



4283923359

# Split Complementary

Split-complementary colors differ from the complementary color scheme. The scheme consists of three colors, the original color and two neighbors of the complement color.



4285432239



4288641879



4281634206

# Square

The Square scheme is like the rectangle color scheme, but the four colors are evenly spaced on the color wheel.



4288641879



4283796849



4283140268



4289032850

# Rectangle

The Rectangle color scheme consists of four colors that form a rectangle on the color wheel.



4288641879



4286154585



4283140268



4286938282



# Sweetspot

The Sweet Spot groups the original color and five complimentary colors.



4288641879



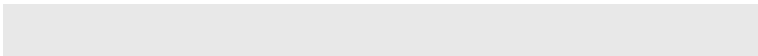
4291805362



4288632699



4285096023



4293454056



4285098345



# Same Dimension

The Same Dimension uses a secret algorithm to generate beautiful new colors.



4288641879



4291794783



4288651095



4283386695



4287579904



4279175168



# Inverse Universe

The Inverse Universe completely reimagines the original color for something new.



4283923359



4284454863



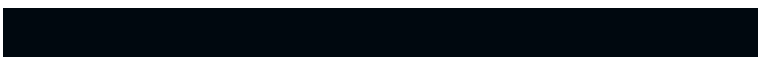
4283914143



4282862415



4278208399

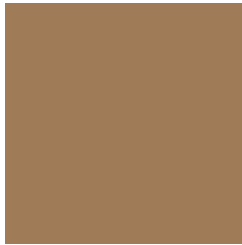


4278192143



# Previews

## White Background



This preview shows how the Android color 4288641879 looks on a white background.

## Color Contrast Check

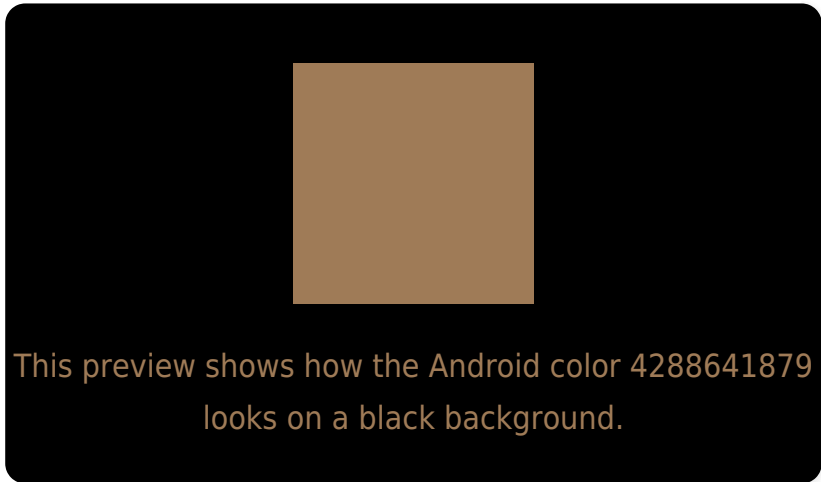
Large Text (above 18pt) WCAG AA ✓ Pass

Any Text WCAG AA ✗ Fail

Large Text (above 18pt) WCAG AAA ✗ Fail

Any Text WCAG AAA ✗ Fail

# Black Background



## Color Contrast Check

Large Text (above 18pt) WCAG AA ✓ Pass

Any Text WCAG AA ✓ Pass

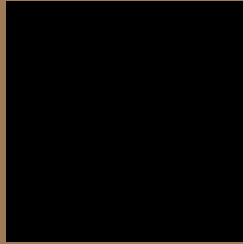
Large Text (above 18pt) WCAG AAA ✓ Pass

Any Text WCAG AAA × Fail

If you want to check with other color combinations, try the [Color Contrast Checker](#).



# Android 4288641879 Background



This preview shows how black text looks on a background with the Android color 4288641879.



This preview shows how white text looks on a background with the Android color 4288641879.

# Color Blindness Simulation

Color vision deficiency is a very complex topic, and I could not describe the different causes any better than Wikipedia does, so if you want to learn more, you should check out their [article about color blindness](#).

## Dichromacy



**Original Color**

4288641879

**Protanopia**

4287464026

**Deuteranopia**

4288445527



# Trichromacy



**Original Color**  
4288641879

**Protanomaly**  
4287922009

**Deuteranomaly**  
4288511063

**Tritanomaly**  
4288837744

# Monochromacy



**Original Color**  
4288641879

**Achromatopsia**  
4286743170

**Achromatomaly**  
4287463282

# CSS Examples

## Text

The CSS property to change the color of the text to Android 4288641879 is called "color". The color property can be set on classes, ids or directly on the HTML element.

This example shows how text in the color `rgb(159, 123, 87)` looks like.

```
.text, #text, p{  
    color:rgb(159, 123, 87)  
}
```

If you want to add a text shadow in that color use the text-shadow property, you can generate a text shadow directly with our [CSS Text Shadow Generator](#).

Here you see how black text with a 4 pixel rgb(159, 123, 87) colored shadow looks like.

```
.shadow{ text-shadow: 4px 4px 2px rgb(159, 123, 87) }
```

## Border

The CSS property to change the border of an element to Android 4288641879 is called "border". The border property can be set on classes, ids or directly on the HTML element.

This example shows the color as border, it can be applied via the CSS property "border" or "border-color".

```
.border, #border, table{ border:4px solid rgb(159, 123, 87) }
```

If only the border color should be changed use the property `border-color`.

```
.border{ border-color:rgb(159, 123, 87) }
```

If you want to add a box shadow in that color use:

Here you see how a box with a 4 pixel `rgb(159, 123, 87)` colored shadow looks like.

```
.boxshadow{ -moz-box-shadow:4px 4px 4px  
4px rgb(159, 123, 87); -webkit-box-  
shadow:4px 4px 4px 4px rgb(159, 123, 87);  
box-shadow:4px 4px 4px 4px rgb(159, 123,  
87) }
```

# Background

The CSS property to change the background color of an element to Android 4288641879 is called "background". The background property can be set on classes, ids or directly on the HTML element.

```
.background, #background, body{  
background: rgb(159, 123, 87) }
```

If only the background color should be changed can be used:

```
.background{ background-color: rgb(159,  
123, 87) }
```

This example shows the color as background, it is applied via the CSS property "background".

To optimize and compress your CSS code, you can use our [online CSS compressor and optimizer](#) based on csstidy. If you want to create a linear or radial gradient as background or border, check our [CSS Gradient Generator](#).



Hey! You found this booklet interesting? Support Converting Colors with the new Membership Option!

The pro membership hides all ads, plus gives you double the colors in the color bucket, and more awesome pro features!

**[Learn more, Memberships starting at \\$2.50/m!](#)**

**Follow me  
on Twitter!**

@ConvertingColor