

Converting Colors

Android(4288706650)

Have a look what the booklet for
Android(4288706650) contains.

Android(4288706650)	3
<i>Conversions</i>	4
<i>Details</i>	6
<i>Harmonies</i>	11
<i>Previews</i>	23
<i>Color Blindness Simulation</i>	26
<i>CSS Examples</i>	29

Color

Android(4288706650)

Conversions

Conversions Part 1

Format	Color
Hex	A0785A
RGB	160, 120, 90
RGB Percent	63%, 47%, 35%
CMY	0.3725, 0.5294, 0.6471
CMYK	0.00, 0.25, 0.44, 0.37
HSL	26°, 28%, 49%
HSV	26°, 44%, 63%
XYZ	23.0591, 21.6447, 12.6354
YIQ	128.5400, 33.4700, -0.8500

Conversions

Conversions Part 2

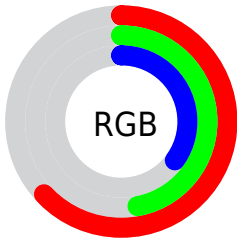
Format	Color
RYB	160, 143, 90
Decimal	10516570
CIELab	53.65, 11.64, 22.53
CIElCh	54, 25.358, 62.682
Yxy	21.6447, 0.4022, 0.3775
Android (android.graphics.Color)	4288706650 (0xFFA0785A)
YUV	128.5400, -19.0002, 27.5904
Hunter-Lab	46.5239, 7.0551, 16.4642

Details

The Android color `4288706650` is a dark color, and the websafe version is hex `996633`, and the color name is `chamoisee`. A complement of this color would be `4284121760`, and the grayscale version is `4286677377`.

A 20% lighter version of the original color is `4292390028`, and `4285155116` is the 20% darker color. If you saturate the color by 10%, you get `4288704330`, and if you desaturate by 10%, it is `4288708970`.

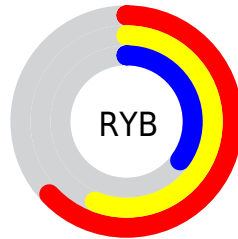
Distribution



Red (63%)

Green (47%)

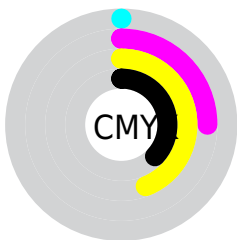
Blue (35%)



Red (63%)

Yellow (56%)

Blue (35%)

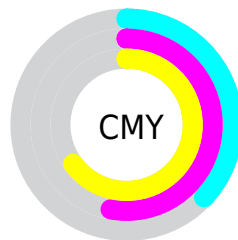


Cyan (0%)

Magenta (25%)

Yellow (44%)

Black (37%)



Cyan (37%)

Magenta (53%)

Yellow (65%)

Brightness & Saturation Gradients

These gradients show how the Android color 4288706650 changes by changing the brightness by 10 percent. The first figure shows a shift by +10% for each color and the second figure -10%.

Similar to the brightness gradients but the following saturation gradients show a change of the Android color 4288706650 by changing the saturation by 10% instead.



4288706650



4288706650

4294967295



4286930754



4292390028



4285155116



4294297767



4283511062



4294960322



4281932800



4294967262



4280353792



4294967291



4278190080



4288706650



4288706650



4288704330



4288708970



4288702010



4288711290

■ 4288699690

■ 4288713610

■ 4288697114

■ 4288716186

■ 4288694794

■ 4288718506

■ 4288693504

■ 4288720826

■ 4288723146

■ 4288725466

■ 4288727786

Harmonies

Analogous

The Analogous color harmony consists of three colors that are next to each other on the color wheel.



4289426026



4288706650



4287463252

Triad

The Triadic color harmony groups three colors that are evenly spaced from another and form a triangle on the color wheel.



4288706650



4282682497



4287003301

Complementary

The Complementary color scheme is a pair of colors which are on the opposite of each other on the color wheel.



4288706650



4284121760

Split Complementary

Split-complementary colors differ from the complementary color scheme. The scheme consists of three colors, the original color and two neighbors of the complement color.



4284908203



4288706650



4281895831

Square

The Square scheme is like the rectangle color scheme, but the four colors are evenly spaced on the color wheel.



4288706650



4284320363



4282878118



4288574357

Rectangle

The Rectangle color scheme consists of four colors that form a rectangle on the color wheel.



4288706650



4286481495



4282878118



4286348456

Sweetspot

The Sweet Spot groups the original color and five complimentary colors.



4288706650



4291936950



4288699011



4285095768



4293454056



4285098345

Same Dimension

The Same Dimension uses a secret algorithm to generate beautiful new colors.



4288706650



4291924578



4288715354



4283386695



4287577344



4279174912

Inverse Universe

The Inverse Universe completely reimagines the original color for something new.



4284121760



4284654289



4284113056



4282862671



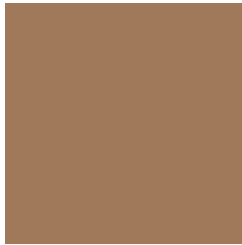
4278211215



4278192399

Previews

White Background



This preview shows how the Android color 4288706650 looks on a white background.

Color Contrast Check

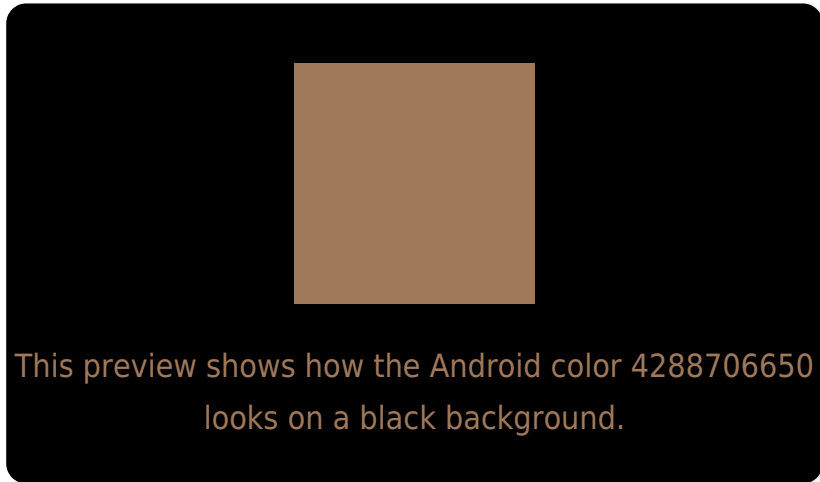
Large Text (above 18pt) WCAG AA ✓ Pass

Any Text WCAG AA ✗ Fail

Large Text (above 18pt) WCAG AAA ✗ Fail

Any Text WCAG AAA ✗ Fail

Black Background



Color Contrast Check

Large Text (above 18pt) WCAG AA ✓ Pass

Any Text WCAG AA ✓ Pass

Large Text (above 18pt) WCAG AAA ✓ Pass

Any Text WCAG AAA × Fail

If you want to check with other color combinations, try the [Color Contrast Checker](#).

Android 4288706650 Background



This preview shows how black text looks on a background with the Android color 4288706650.



This preview shows how white text looks on a background with the Android color 4288706650.

Color Blindness Simulation

Color vision deficiency is a very complex topic, and I could not describe the different causes any better than Wikipedia does, so if you want to learn more, you should check out their [article about color blindness](#).

Dichromacy



Original Color
4288706650

Protanopia
4287266910

Deuteranopia
4288248665

Trichromacy



Original Color
4288706650

Protanomaly
4287790429

Deuteranomaly
4288445017

Tritanomaly
4288836976

Monochromacy



Original Color
4288706650

Achromatopsia
4286677377

Achromatomaly
4287397491

CSS Examples

Text

The CSS property to change the color of the text to Android 4288706650 is called "color". The color property can be set on classes, ids or directly on the HTML element.

This example shows how text in the color `rgb(160, 120, 90)` looks like.

```
.text, #text, p{  
    color:rgb(160, 120, 90)  
}
```

If you want to add a text shadow in that color use the text-shadow property, you can generate a text shadow directly with our [CSS Text Shadow Generator](#).

Here you see how black text with a 4 pixel rgb(160, 120, 90) colored shadow looks like.

```
.shadow{ text-shadow: 4px 4px 2px rgb(160, 120, 90) }
```

Border

The CSS property to change the border of an element to Android 4288706650 is called "border". The border property can be set on classes, ids or directly on the HTML element.

This example shows the color as border, it can be applied via the CSS property "border" or "border-color".

```
.border, #border, table{ border:4px solid rgb(160, 120, 90) }
```

If only the border color should be changed use the property `border-color`.

```
.border{ border-color:rgb(160, 120, 90) }
```

If you want to add a box shadow in that color use:

Here you see how a box with a 4 pixel `rgb(160, 120, 90)` colored shadow looks like.

```
.boxshadow{ -moz-box-shadow:4px 4px 4px  
4px rgb(160, 120, 90); -webkit-box-  
shadow:4px 4px 4px 4px rgb(160, 120, 90);  
box-shadow:4px 4px 4px 4px rgb(160, 120,  
90) }
```

Background

The CSS property to change the background color of an element to Android 4288706650 is called "background". The background property can be set on classes, ids or directly on the HTML element.

```
.background, #background, body{  
background: rgb(160, 120, 90) }
```

If only the background color should be changed can be used:

```
.background{ background-color: rgb(160,  
120, 90) }
```

This example shows the color as background, it is applied via the CSS property "background".

To optimize and compress your CSS code, you can use our [online CSS compressor and optimizer](#) based on csstidy. If you want to create a linear or radial gradient as background or border, check our [CSS Gradient Generator](#).

Hey! You found this booklet interesting? Support Converting Colors with the new Membership Option!

The pro membership hides all ads, plus gives you double the colors in the color bucket, and more awesome pro features!

[Learn more, Memberships starting at \\$2.50/m!](#)

**Follow me
on Twitter!**

@ConvertingColor