

Converting Colors

Android(4288706659)

Have a look what the booklet for
Android(4288706659) contains.

Android(4288706659)	3
<i>Conversions</i>	4
<i>Details</i>	6
<i>Harmonies</i>	11
<i>Previews</i>	23
<i>Color Blindness Simulation</i>	26
<i>CSS Examples</i>	29

Color

Android(4288706659)

Conversions

Conversions Part 1

Format	Color
Hex	A07863
RGB	160, 120, 99
RGB Percent	63%, 47%, 39%
CMY	0.3725, 0.5294, 0.6118
CMYK	0.00, 0.25, 0.38, 0.37
HSL	21°, 24%, 51%
HSV	21°, 38%, 63%
XYZ	23.4658, 21.8074, 14.7768
YIQ	129.5660, 30.5810, 1.9490

Conversions

Conversions Part 2

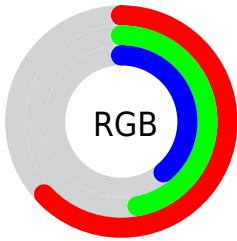
Format	Color
R_{YB}	160, 131, 99
Decimal	10516579
CIE _{Lab}	53.82, 12.71, 17.60
CIE _{LCh}	54, 21.713, 54.171
Yxy	21.8074, 0.3908, 0.3632
Android (android.graphics.Color)	4288706659 (0xFFA07863)
YUV	129.5660, -15.0690, 26.6906
Hunter-Lab	46.6984, 7.9736, 13.9276

Details

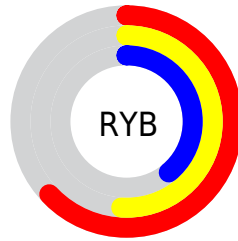
The Android color `4288706659` is a dark color, and the websafe version is hex `996666`. A complement of this color would be `4284713888`, and the grayscale version is `4286743170`.

A 20% lighter version of the original color is `4292390038`, and `4285220660` is the 20% darker color. If you saturate the color by 10%, you get `4288704083`, and if you desaturate by 10%, it is `4288709235`.

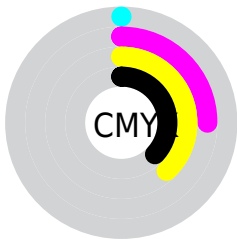
Distribution



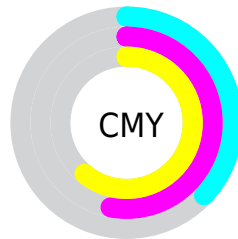
- Red (63%)
- Green (47%)
- Blue (39%)



- Red (63%)
- Yellow (51%)
- Blue (39%)



- Cyan (0%)
- Magenta (25%)
- Yellow (38%)
- Black (37%)



- Cyan (37%)
- Magenta (53%)
- Yellow (61%)

Brightness & Saturation Gradients

These gradients show how the Android color 4288706659 changes by changing the brightness by 10 percent. The first figure shows a shift by +10% for each color and the second figure -10%.

Similar to the brightness gradients but the following saturation gradients show a change of the Android color 4288706659 by changing the saturation by 10% instead.



4288706659



4288706659

4294967295



4286930763



4292390038



4285220660



4294297777



4283511071



4294960332



4281932808



4294967272



4280484608



4278190080



4288706659



4288706659



4288704083



4288709235



4288701251



4288712067

 4288698675

 4288714643

 4288695843

 4288717475

 4288693267

 4288720051

 4288690435

 4288722883

 4288689920

 4288725459

 4288728291

 4288730867

Harmonies

Analogous

The Analogous color harmony consists of three colors that are next to each other on the color wheel.



4289164402



4288706659



4287790684

Triad

The Triadic color harmony groups three colors that are evenly spaced from another and form a triangle on the color wheel.



4288706659



4283796348



4286545315

Complementary

The Complementary color scheme is a pair of colors which are on the opposite of each other on the color wheel.



4288706659



4284713888

Split Complementary

Split-complementary colors differ from the complementary color scheme. The scheme consists of three colors, the original color and two neighbors of the complement color.



4284777381



4288706659



4283009935

Square

The Square scheme is like the rectangle color scheme, but the four colors are evenly spaced on the color wheel.



4288706659



4285106538



4283336862



4287985559

Rectangle

The Rectangle color scheme consists of four colors that form a rectangle on the color wheel.



4288706659



4286939740



4283336862



4285956005

Sweetspot

The Sweet Spot groups the original color and five complimentary colors.



4288706659



4291936954



4288701324



4285096027



4293454056



4285098345

Same Dimension

The Same Dimension uses a secret algorithm to generate beautiful new colors.



4288706659



4291924593



4288714339



4283386439



4287574272



4279174400

Inverse Universe

The Inverse Universe completely reimagines the original color for something new.



4284713888



4285640913



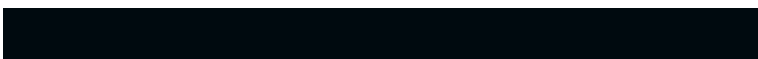
4284706208



4282862671



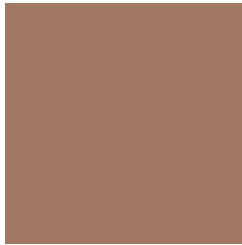
4278214287



4278192655

Previews

White Background



This preview shows how the Android color 4288706659 looks on a white background.

Color Contrast Check

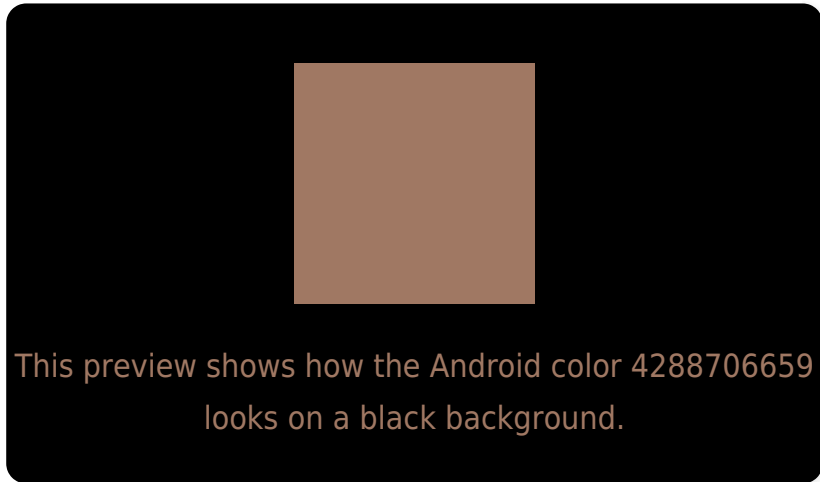
Large Text (above 18pt) WCAG AA ✓ Pass

Any Text WCAG AA ✗ Fail

Large Text (above 18pt) WCAG AAA ✗ Fail

Any Text WCAG AAA ✗ Fail

Black Background



Color Contrast Check

Large Text (above 18pt) WCAG AA ✓ Pass

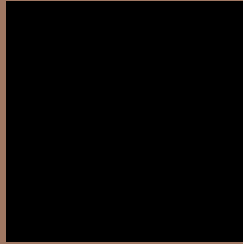
Any Text WCAG AA ✓ Pass

Large Text (above 18pt) WCAG AAA ✓ Pass

Any Text WCAG AAA × Fail

If you want to check with other color combinations, try the [Color Contrast Checker](#).

Android 4288706659 Background



This preview shows how black text looks on a background with the Android color 4288706659.



This preview shows how white text looks on a background with the Android color 4288706659.

Color Blindness Simulation

Color vision deficiency is a very complex topic, and I could not describe the different causes any better than Wikipedia does, so if you want to learn more, you should check out their [article about color blindness](#).

Dichromacy



Original Color
4288706659

Protanopia
4287201639

Deuteranopia
4288183394

Trichromacy



Original Color
4288706659

Protanomaly
4287725158

Deuteranomaly
4288379746

Tritanomaly
4288836980

Monochromacy



Original Color
4288706659

Achromatopsia
4286743170

Achromatomaly
4287463031

CSS Examples

Text

The CSS property to change the color of the text to Android 4288706659 is called "color". The color property can be set on classes, ids or directly on the HTML element.

This example shows how text in the color `rgb(160, 120, 99)` looks like.

```
.text, #text, p{  
    color:rgb(160, 120, 99)  
}
```

If you want to add a text shadow in that color use the text-shadow property, you can generate a text shadow directly with our [CSS Text Shadow Generator](#).

Here you see how black text with a 4 pixel rgb(160, 120, 99) colored shadow looks like.

```
.shadow{ text-shadow: 4px 4px 2px rgb(160, 120, 99) }
```

Border

The CSS property to change the border of an element to Android 4288706659 is called "border". The border property can be set on classes, ids or directly on the HTML element.

This example shows the color as border, it can be applied via the CSS property "border" or "border-color".

```
.border, #border, table{ border:4px solid rgb(160, 120, 99) }
```

If only the border color should be changed use the property `border-color`.

```
.border{ border-color:rgb(160, 120, 99) }
```

If you want to add a box shadow in that color use:

Here you see how a box with a 4 pixel `rgb(160, 120, 99)` colored shadow looks like.

```
.boxshadow{ -moz-box-shadow:4px 4px 4px  
4px rgb(160, 120, 99); -webkit-box-  
shadow:4px 4px 4px 4px rgb(160, 120, 99);  
box-shadow:4px 4px 4px 4px rgb(160, 120,  
99) }
```

Background

The CSS property to change the background color of an element to Android 4288706659 is called "background". The background property can be set on classes, ids or directly on the HTML element.

```
.background, #background, body{  
background: rgb(160, 120, 99) }
```

If only the background color should be changed can be used:

```
.background{ background-color: rgb(160,  
120, 99) }
```

This example shows the color as background, it is applied via the CSS property "background".

To optimize and compress your CSS code, you can use our [online CSS compressor and optimizer](#) based on csstidy. If you want to create a linear or radial gradient as background or border, check our [CSS Gradient Generator](#).

Hey! You found this booklet interesting? Support Converting Colors with the new Membership Option!

The pro membership hides all ads, plus gives you double the colors in the color bucket, and more awesome pro features!

[Learn more, Memberships starting at \\$2.50/m!](#)

**Follow me
on Twitter!**

@ConvertingColor