

Converting Colors

Android(4288707928)

Have a look what the booklet for
Android(4288707928) contains.

Android(4288707928)	3
<i>Conversions</i>	4
<i>Details</i>	6
<i>Harmonies</i>	11
<i>Previews</i>	23
<i>Color Blindness Simulation</i>	26
<i>CSS Examples</i>	29

Color

Android(4288707928)

Conversions

Conversions Part 1

Format	Color
Hex	A07D58
RGB	160, 125, 88
RGB Percent	63%, 49%, 35%
CMY	0.3725, 0.5098, 0.6549
CMYK	0.00, 0.22, 0.45, 0.37
HSL	31°, 29%, 49%
HSV	31°, 45%, 63%
XYZ	23.5923, 22.8454, 12.3987
YIQ	131.2470, 32.7370, -4.0870

Conversions

Conversions Part 2

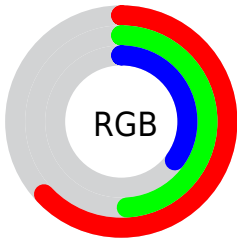
Format	Color
RYB	156, 160, 88
Decimal	10517848
CIELab	54.91, 8.57, 25.32
CIElCh	55, 26.735, 71.301
Yxy	22.8454, 0.4010, 0.3883
Android (android.graphics.Color)	4288707928 (0xFFA07D58)
YUV	131.2470, -21.3208, 25.2164
Hunter-Lab	47.7969, 4.4621, 18.0778

Details

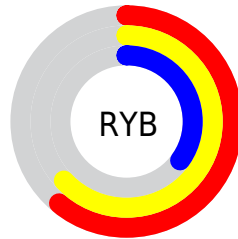
The Android color `4288707928` is a dark color, and the websafe version is hex `996633`. A complement of this color would be `4283988896`, and the grayscale version is `4286808963`.

A 20% lighter version of the original color is `4292391562`, and `4285221930` is the 20% darker color. If you saturate the color by 10%, you get `4288705864`, and if you desaturate by 10%, it is `4288709992`.

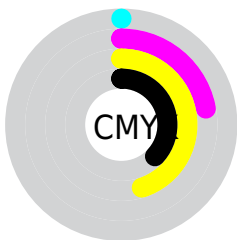
Distribution



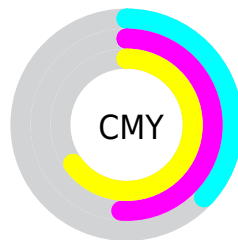
- Red (63%)
- Green (49%)
- Blue (35%)



- Red (61%)
- Yellow (63%)
- Blue (35%)



- Cyan (0%)
- Magenta (22%)
- Yellow (45%)
- Black (37%)



- Cyan (37%)
- Magenta (51%)
- Yellow (65%)

Brightness & Saturation Gradients

These gradients show how the Android color 4288707928 changes by changing the brightness by 10 percent. The first figure shows a shift by +10% for each color and the second figure -10%.

Similar to the brightness gradients but the following saturation gradients show a change of the Android color 4288707928 by changing the saturation by 10% instead.



4288707928



4288707928

4294967295



4286932032



4292391562



4285221930



4294299045



4283512084



4294961600



4281933824



4294967260



4280355328



4294967289



4278190080



4288707928



4288707928



4288705864



4288709992



4288703800



4288712056

■ 4288701992

■ 4288713864

■ 4288699928

■ 4288715928

■ 4288697864

■ 4288717992

■ 4288696832

■ 4288720056

■ 4288721864

■ 4288723928

■ 4288725992

Harmonies

Analogous

The Analogous color harmony consists of three colors that are next to each other on the color wheel.



4289623654



4288707928



4287333718

Triad

The Triadic color harmony groups three colors that are evenly spaced from another and form a triangle on the color wheel.



4288707928



4282159244



4287789734

Complementary

The Complementary color scheme is a pair of colors which are on the opposite of each other on the color wheel.



4288707928



4283988896

Split Complementary

Split-complementary colors differ from the complementary color scheme. The scheme consists of three colors, the original color and two neighbors of the complement color.



4285694897



4288707928



4281765537

Square

The Square scheme is like the rectangle color scheme, but the four colors are evenly spaced on the color wheel.



4288707928



4283862900



4283337391



4289229971

Rectangle

The Rectangle color scheme consists of four colors that form a rectangle on the color wheel.



4288707928



4286220635



4283337391



4287135147

Sweetspot

The Sweet Spot groups the original color and five complimentary colors.



4288707928



4291937204



4288698492



4285096023



4293454056



4285098345

Same Dimension

The Same Dimension uses a secret algorithm to generate beautiful new colors.



4288707928



4291926624



4288716888



4283386695



4287580416



4279175168

Inverse Universe

The Inverse Universe completely reimagines the original color for something new.



4283988896



4284520401



4283979936



4282862415



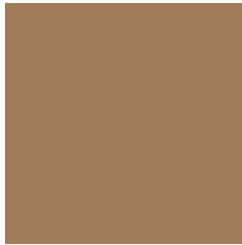
4278207887



4278191887

Previews

White Background



This preview shows how the Android color 4288707928 looks on a white background.

Color Contrast Check

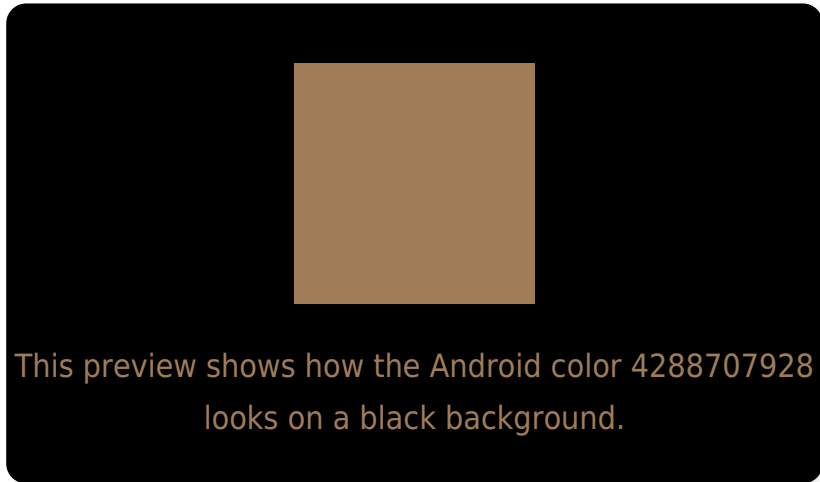
Large Text (above 18pt) WCAG AA ✓ Pass

Any Text WCAG AA ✗ Fail

Large Text (above 18pt) WCAG AAA ✗ Fail

Any Text WCAG AAA ✗ Fail

Black Background



Color Contrast Check

Large Text (above 18pt) WCAG AA ✓ Pass

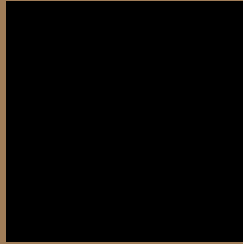
Any Text WCAG AA ✓ Pass

Large Text (above 18pt) WCAG AAA ✓ Pass

Any Text WCAG AAA × Fail

If you want to check with other color combinations, try the [Color Contrast Checker](#).

Android 4288707928 Background



This preview shows how black text looks on a background with the Android color 4288707928.



This preview shows how white text looks on a background with the Android color 4288707928.

Color Blindness Simulation

Color vision deficiency is a very complex topic, and I could not describe the different causes any better than Wikipedia does, so if you want to learn more, you should check out their [article about color blindness](#).

Dichromacy



Original Color
4288707928

Protanopia
4287530075

Deuteranopia
4288577112

Trichromacy



Original Color
4288707928

Protanomaly
4287988058

Deuteranomaly
4288642648

Tritanomaly
4288903794

Monochromacy



Original Color
4288707928

Achromatopsia
4286808963

Achromatomaly
4287529331

CSS Examples

Text

The CSS property to change the color of the text to Android 4288707928 is called "color". The color property can be set on classes, ids or directly on the HTML element.

This example shows how text in the color `rgb(160, 125, 88)` looks like.

```
.text, #text, p{  
    color:rgb(160, 125, 88)  
}
```

If you want to add a text shadow in that color use the text-shadow property, you can generate a text shadow directly with our [CSS Text Shadow Generator](#).

Here you see how black text with a 4 pixel rgb(160, 125, 88) colored shadow looks like.

```
.shadow{ text-shadow: 4px 4px 2px rgb(160, 125, 88) }
```

Border

The CSS property to change the border of an element to Android 4288707928 is called "border". The border property can be set on classes, ids or directly on the HTML element.

This example shows the color as border, it can be applied via the CSS property "border" or "border-color".

```
.border, #border, table{ border:4px solid rgb(160, 125, 88) }
```

If only the border color should be changed use the property `border-color`.

```
.border{ border-color:rgb(160, 125, 88) }
```

If you want to add a box shadow in that color use:

Here you see how a box with a 4 pixel `rgb(160, 125, 88)` colored shadow looks like.

```
.boxshadow{ -moz-box-shadow:4px 4px 4px  
4px rgb(160, 125, 88); -webkit-box-  
shadow:4px 4px 4px 4px rgb(160, 125, 88);  
box-shadow:4px 4px 4px 4px rgb(160, 125,  
88) }
```

Background

The CSS property to change the background color of an element to Android 4288707928 is called "background". The background property can be set on classes, ids or directly on the HTML element.

```
.background, #background, body{  
background: rgb(160, 125, 88) }
```

If only the background color should be changed can be used:

```
.background{ background-color: rgb(160,  
125, 88) }
```

This example shows the color as background, it is applied via the CSS property "background".

To optimize and compress your CSS code, you can use our [online CSS compressor and optimizer](#) based on csstidy. If you want to create a linear or radial gradient as background or border, check our [CSS Gradient Generator](#).

Hey! You found this booklet interesting? Support Converting Colors with the new Membership Option!

The pro membership hides all ads, plus gives you double the colors in the color bucket, and more awesome pro features!

[Learn more, Memberships starting at \\$2.50/m!](#)

**Follow me
on Twitter!**

@ConvertingColor