

Converting Colors

Android(4288709743)

Have a look what the booklet for
Android(4288709743) contains.

Android(4288709743)	3
<i>Conversions</i>	4
<i>Details</i>	6
<i>Harmonies</i>	11
<i>Previews</i>	23
<i>Color Blindness Simulation</i>	26
<i>CSS Examples</i>	29

Color

Android(4288709743)

Conversions

Conversions Part 1

Format	Color
Hex	A0846F
RGB	160, 132, 111
RGB Percent	63%, 52%, 44%
CMY	0.3725, 0.4824, 0.5647
CMYK	0.00, 0.17, 0.31, 0.37
HSL	26°, 21%, 53%
HSV	26°, 31%, 63%
XYZ	25.6177, 25.1238, 18.5381
YIQ	137.9780, 23.4290, -0.5950

Conversions

Conversions Part 2

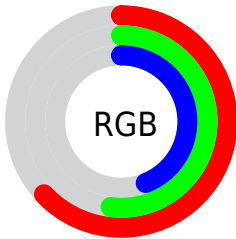
Format	Color
R_{YB}	160, 148, 111
Decimal	10519663
CIE _{Lab}	57.20, 7.48, 15.35
CIE _{LCh}	57, 17.075, 64.031
Yxy	25.1238, 0.3698, 0.3626
Android (android.graphics.Color)	4288709743 (0xFFA0846F)
YUV	137.9780, -13.3002, 19.3133
Hunter-Lab	50.1237, 3.5132, 13.1583

Details

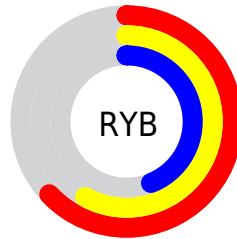
The Android color `4288709743` is a dark color, and the websafe version is hex `996666`. A complement of this color would be `4285500320`, and the grayscale version is `4287269514`.

A 20% lighter version of the original color is `4292327843`, and `4285289279` is the 20% darker color. If you saturate the color by 10%, you get `4288707423`, and if you desaturate by 10%, it is `4288712063`.

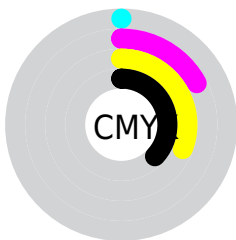
Distribution



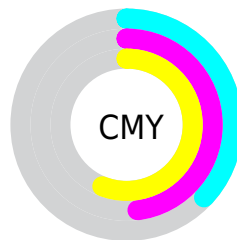
- Red (63%)
- Green (52%)
- Blue (44%)



- Red (63%)
- Yellow (58%)
- Blue (44%)



- Cyan (0%)
- Magenta (17%)
- Yellow (31%)
- Black (37%)



- Cyan (37%)
- Magenta (48%)
- Yellow (56%)

Brightness & Saturation Gradients

These gradients show how the Android color 4288709743 changes by changing the brightness by 10 percent. The first figure shows a shift by +10% for each color and the second figure -10%.

Similar to the brightness gradients but the following saturation gradients show a change of the Android color 4288709743 by changing the saturation by 10% instead.



4288709743



4288709743

4294967295



4286933847



4292327843



4285289279



4294235582



4283644969



4294963674



4282066452



4294967286



4280619264



4278190080



4288709743



4288709743



4288707423



4288712063



4288705103



4288714383

 4288702783

 4288716703

 4288700207

 4288719279

 4288697887

 4288721599

 4288695567

 4288723919

 4288693504

 4288726239

 4288728559

 4288730879

Harmonies

Analogous

The Analogous color harmony consists of three colors that are next to each other on the color wheel.



4289167481



4288709743



4287859052

Triad

The Triadic color harmony groups three colors that are evenly spaced from another and form a triangle on the color wheel.



4288709743



4284781195



4287530402

Complementary

The Complementary color scheme is a pair of colors which are on the opposite of each other on the color wheel.



4288709743



4285500320

Split Complementary

Split-complementary colors differ from the complementary color scheme. The scheme consists of three colors, the original color and two neighbors of the complement color.



4286286503



4288709743



4284584345

Square

The Square scheme is like the rectangle color scheme, but the four colors are evenly spaced on the color wheel.



4288709743



4285632892



4285107876



4288577943

Rectangle

The Rectangle color scheme consists of four colors that form a rectangle on the color wheel.



4288709743



4287138926



4285107876



4287137700

Sweetspot

The Sweet Spot groups the original color and five complimentary colors.



4288709743



4291937982



4288704396



4285096541



4293454056



4285098345

Same Dimension

The Same Dimension uses a secret algorithm to generate beautiful new colors.



4288709743



4291929476



4288715887



4283386695



4287577344



4279174912

Inverse Universe

The Inverse Universe completely reimagines the original color for something new.



4285500320



4286886097



4285494176



4282862671



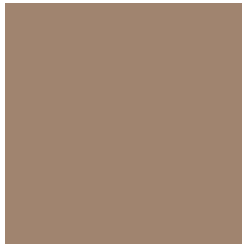
4278211215



4278192399

Previews

White Background



This preview shows how the Android color 4288709743 looks on a white background.

Color Contrast Check

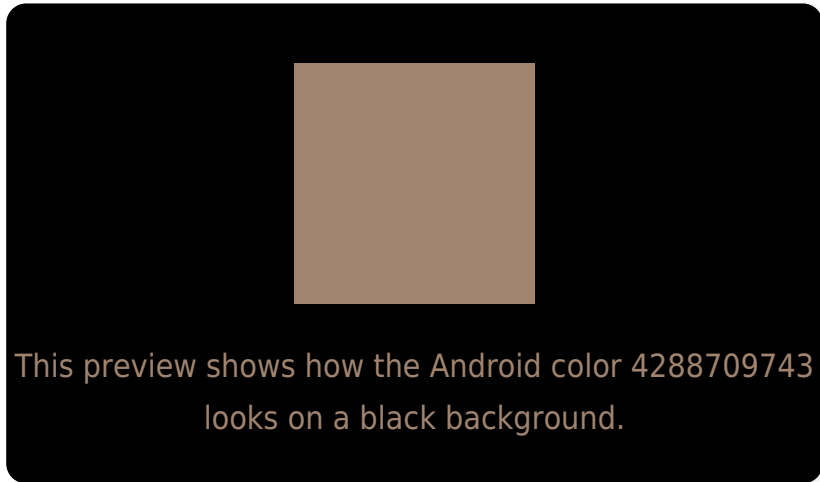
Large Text (above 18pt) WCAG AA ✓ Pass

Any Text WCAG AA ✗ Fail

Large Text (above 18pt) WCAG AAA ✗ Fail

Any Text WCAG AAA ✗ Fail

Black Background



Color Contrast Check

Large Text (above 18pt) WCAG AA ✓ Pass

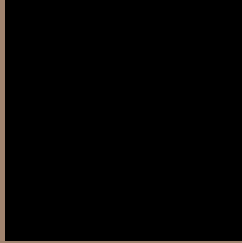
Any Text WCAG AA ✓ Pass

Large Text (above 18pt) WCAG AAA ✓ Pass

Any Text WCAG AAA × Fail

If you want to check with other color combinations, try the [Color Contrast Checker](#).

Android 4288709743 Background



This preview shows how black text looks on a background with the Android color 4288709743.



This preview shows how white text looks on a background with the Android color 4288709743.

Color Blindness Simulation

Color vision deficiency is a very complex topic, and I could not describe the different causes any better than Wikipedia does, so if you want to learn more, you should check out their [article about color blindness](#).

Dichromacy



Original Color

4288709743

Protanopia

4287727985

Deuteranopia

4288709743

Trichromacy



Original Color
4288709743

Protanomaly
4288055152

Deuteranomaly
4288709743

Tritanomaly
4288840064

Monochromacy



Original Color
4288709743

Achromatopsia
4287269514

Achromatomaly
4287793280

CSS Examples

Text

The CSS property to change the color of the text to Android 4288709743 is called "color". The color property can be set on classes, ids or directly on the HTML element.

This example shows how text in the color `rgb(160, 132, 111)` looks like.

```
.text, #text, p{  
    color:rgb(160, 132, 111)  
}
```

If you want to add a text shadow in that color use the text-shadow property, you can generate a text shadow directly with our [CSS Text Shadow Generator](#).

Here you see how black text with a 4 pixel rgb(160, 132, 111) colored shadow looks like.

```
.shadow{ text-shadow: 4px 4px 2px rgb(160, 132, 111) }
```

Border

The CSS property to change the border of an element to Android 4288709743 is called "border". The border property can be set on classes, ids or directly on the HTML element.

This example shows the color as border, it can be applied via the CSS property "border" or "border-color".

```
.border, #border, table{ border:4px solid rgb(160, 132, 111) }
```

If only the border color should be changed use the property border-color.

```
.border{ border-color:rgb(160, 132, 111) }
```

If you want to add a box shadow in that color use:

Here you see how a box with a 4 pixel rgb(160, 132, 111) colored shadow looks like.

```
.boxshadow{ -moz-box-shadow:4px 4px 4px  
4px rgb(160, 132, 111); -webkit-box-  
shadow:4px 4px 4px 4px rgb(160, 132, 111);  
box-shadow:4px 4px 4px 4px rgb(160, 132,  
111) }
```

Background

The CSS property to change the background color of an element to Android 4288709743 is called "background". The background property can be set on classes, ids or directly on the HTML element.

```
.background, #background, body{  
background: rgb(160, 132, 111) }
```

If only the background color should be changed can be used:

```
.background{ background-color: rgb(160,  
132, 111) }
```

This example shows the color as background, it is applied via the CSS property "background".

To optimize and compress your CSS code, you can use our [online CSS compressor and optimizer](#) based on csstidy. If you want to create a linear or radial gradient as background or border, check our [CSS Gradient Generator](#).

Hey! You found this booklet interesting? Support Converting Colors with the new Membership Option!

The pro membership hides all ads, plus gives you double the colors in the color bucket, and more awesome pro features!

[Learn more, Memberships starting at \\$2.50/m!](#)

**Follow me
on Twitter!**

@ConvertingColor