

Converting Colors

Android(4288837473)

Have a look what the booklet for
Android(4288837473) contains.

Android(4288837473)	3
<i>Conversions</i>	4
<i>Details</i>	6
<i>Harmonies</i>	11
<i>Previews</i>	23
<i>Color Blindness Simulation</i>	26
<i>CSS Examples</i>	29

Color

Android(4288837473)

Conversions

Conversions Part 1

Format	Color
Hex	A27761
RGB	162, 119, 97
RGB Percent	64%, 47%, 38%
CMY	0.3647, 0.5333, 0.6196
CMYK	0.00, 0.27, 0.40, 0.36
HSL	20°, 26%, 51%
HSV	20°, 40%, 64%
XYZ	23.6548, 21.7381, 14.2584
YIQ	129.3490, 32.6900, 2.2740

Conversions

Conversions Part 2

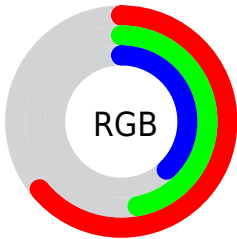
Format	Color
RYB	162, 130, 97
Decimal	10647393
CIELab	53.75, 13.87, 18.69
CIELCh	54, 23.276, 53.427
Yxy	21.7381, 0.3966, 0.3644
Android (android.graphics.Color)	4288837473 (0xFFA27761)
YUV	129.3490, -15.9481, 28.6349
Hunter-Lab	46.6241, 8.9699, 14.5051

Details

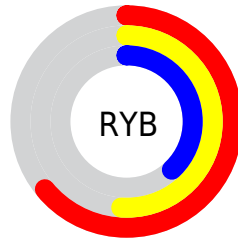
The Android color `4288837473` is a dark color, and the websafe version is hex `996666`. A complement of this color would be `4284583074`, and the grayscale version is `4286677377`.

A 20% lighter version of the original color is `4292520852`, and `4285351474` is the 20% darker color. If you saturate the color by 10%, you get `4288834641`, and if you desaturate by 10%, it is `4288840305`.

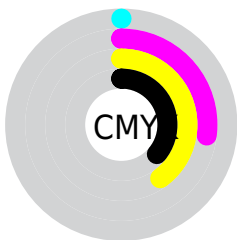
Distribution



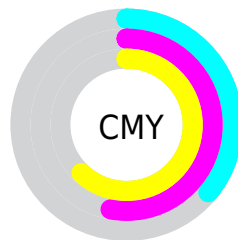
- Red (64%)
- Green (47%)
- Blue (38%)



- Red (64%)
- Yellow (51%)
- Blue (38%)



- Cyan (0%)
- Magenta (27%)
- Yellow (40%)
- Black (36%)



- Cyan (36%)
- Magenta (53%)
- Yellow (62%)

Brightness & Saturation Gradients

These gradients show how the Android color 4288837473 changes by changing the brightness by 10 percent. The first figure shows a shift by +10% for each color and the second figure -10%.

Similar to the brightness gradients but the following saturation gradients show a change of the Android color 4288837473 by changing the saturation by 10% instead.



4288837473



4288837473

4294967295



4287061577



4292520852



4285351474



4294428590



4283641885



4294960074



4282063621



4294967270



4280549888



4278190080



4288837473



4288837473



4288834641



4288840305



4288832065



4288842881

 4288829232

 4288845714

 4288826400

 4288848546

 4288823568

 4288851378

 4288820992

 4288853954

 4288856786

 4288859619

 4288862195

Harmonies

Analogous

The Analogous color harmony consists of three colors that are next to each other on the color wheel.



4289294961



4288837473



4287856217

Triad

The Triadic color harmony groups three colors that are evenly spaced from another and form a triangle on the color wheel.



4288837473



4283534203



4286414245

Complementary

The Complementary color scheme is a pair of colors which are on the opposite of each other on the color wheel.



4288837473



4284583074

Split Complementary

Split-complementary colors differ from the complementary color scheme. The scheme consists of three colors, the original color and two neighbors of the complement color.



4284515496



4288837473



4282551184

Square

The Square scheme is like the rectangle color scheme, but the four colors are evenly spaced on the color wheel.



4288837473



4284975464



4282943904



4288050841

Rectangle

The Rectangle color scheme consists of four colors that form a rectangle on the color wheel.



4288837473



4287005273



4282943904



4285824935

Sweetspot

The Sweet Spot groups the original color and five complimentary colors.



4288837473



4292133818



4288831884



4285227356



4293651435



4285229931

Same Dimension

The Same Dimension uses a secret algorithm to generate beautiful new colors.



4288837473



4292120686



4288845665



4283583561



4287705344



4279371264

Inverse Universe

The Inverse Universe completely reimagines the original color for something new.



4284583074



4285444564



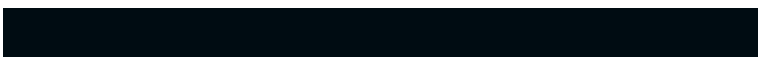
4284574882



4282994514



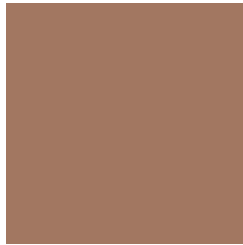
4278214801



4278193170

Previews

White Background



This preview shows how the Android color 4288837473 looks on a white background.

Color Contrast Check

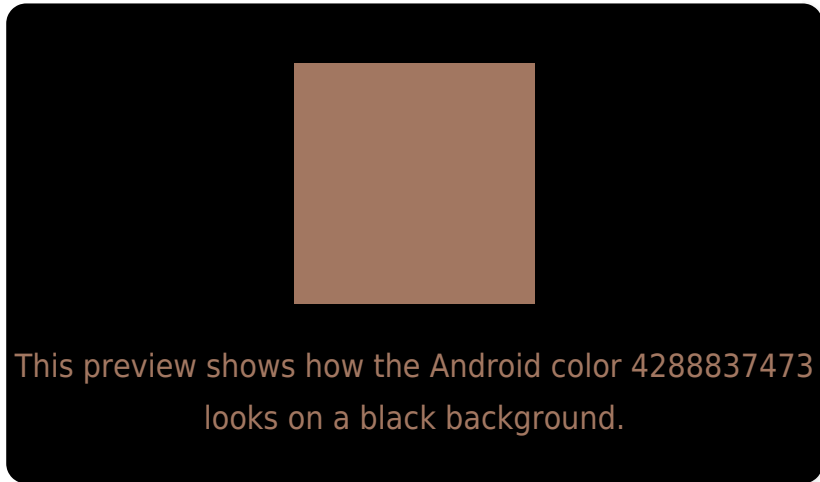
Large Text (above 18pt) WCAG AA ✓ Pass

Any Text WCAG AA ✗ Fail

Large Text (above 18pt) WCAG AAA ✗ Fail

Any Text WCAG AAA ✗ Fail

Black Background



Color Contrast Check

Large Text (above 18pt) WCAG AA ✓ Pass

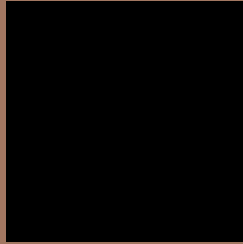
Any Text WCAG AA ✓ Pass

Large Text (above 18pt) WCAG AAA ✓ Pass

Any Text WCAG AAA × Fail

If you want to check with other color combinations, try the [Color Contrast Checker](#).

Android 4288837473 Background



This preview shows how black text looks on a background with the Android color 4288837473.



This preview shows how white text looks on a background with the Android color 4288837473.

Color Blindness Simulation

Color vision deficiency is a very complex topic, and I could not describe the different causes any better than Wikipedia does, so if you want to learn more, you should check out their [article about color blindness](#).

Dichromacy



Original Color

4288837473

Protanopia

4287201637

Deuteranopia

4288183136

Trichromacy



Original Color
4288837473

Protanomaly
4287790436

Deuteranomaly
4288445024

Tritanomaly
4288967794

Monochromacy



Original Color
4288837473

Achromatopsia
4286677377

Achromatomaly
4287462773

CSS Examples

Text

The CSS property to change the color of the text to Android 4288837473 is called "color". The color property can be set on classes, ids or directly on the HTML element.

This example shows how text in the color `rgb(162, 119, 97)` looks like.

```
.text, #text, p{  
    color:rgb(162, 119, 97)  
}
```

If you want to add a text shadow in that color use the text-shadow property, you can generate a text shadow directly with our [CSS Text Shadow Generator](#).

Here you see how black text with a 4 pixel rgb(162, 119, 97) colored shadow looks like.

```
.shadow{ text-shadow: 4px 4px 2px rgb(162, 119, 97) }
```

Border

The CSS property to change the border of an element to Android 4288837473 is called "border". The border property can be set on classes, ids or directly on the HTML element.

This example shows the color as border, it can be applied via the CSS property "border" or "border-color".

```
.border, #border, table{ border:4px solid rgb(162, 119, 97) }
```

If only the border color should be changed use the property `border-color`.

```
.border{ border-color:rgb(162, 119, 97) }
```

If you want to add a box shadow in that color use:

Here you see how a box with a 4 pixel `rgb(162, 119, 97)` colored shadow looks like.

```
.boxshadow{ -moz-box-shadow:4px 4px 4px  
4px rgb(162, 119, 97); -webkit-box-  
shadow:4px 4px 4px 4px rgb(162, 119, 97);  
box-shadow:4px 4px 4px 4px rgb(162, 119,  
97) }
```

Background

The CSS property to change the background color of an element to Android 4288837473 is called "background". The background property can be set on classes, ids or directly on the HTML element.

```
.background, #background, body{  
background: rgb(162, 119, 97) }
```

If only the background color should be changed can be used:

```
.background{ background-color: rgb(162,  
119, 97) }
```

This example shows the color as background, it is applied via the CSS property "background".

To optimize and compress your CSS code, you can use our [online CSS compressor and optimizer](#) based on csstidy. If you want to create a linear or radial gradient as background or border, check our [CSS Gradient Generator](#).

Hey! You found this booklet interesting? Support Converting Colors with the new Membership Option!

The pro membership hides all ads, plus gives you double the colors in the color bucket, and more awesome pro features!

[Learn more, Memberships starting at \\$2.50/m!](#)

**Follow me
on Twitter!**

@ConvertingColor