

# Converting Colors

Android(4288898627)

Have a look what the booklet for  
Android(4288898627) contains.

<b>Android(4288898627)</b> .....	3
<b><i>Conversions</i></b> .....	4
<b><i>Details</i></b> .....	6
<b><i>Harmonies</i></b> .....	11
<b><i>Previews</i></b> .....	23
<b><i>Color Blindness Simulation</i></b> .....	26
<b><i>CSS Examples</i></b> .....	29

**Color**

**Android(4288898627)**

# Conversions

## Conversions Part 1

<b>Format</b>	<b>Color</b>
Hex	A36643
RGB	163, 102, 67
RGB Percent	64%, 40%, 26%
CMY	0.3608, 0.6000, 0.7373
CMYK	0.00, 0.37, 0.59, 0.36
HSL	22°, 42%, 45%
HSV	22°, 59%, 64%
XYZ	20.8687, 17.6945, 7.6257
YIQ	116.2490, 47.5910, 2.0470

# Conversions

## Conversions Part 2

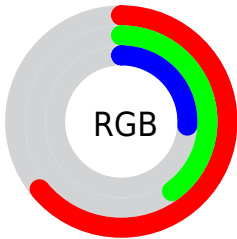
<b>Format</b>	<b>Color</b>
<b>R<sub>YB</sub></b>	163, 122, 67
Decimal	10708547
CIE <sub>Lab</sub>	49.12, 20.94, 29.84
CIE <sub>LCh</sub>	49, 36.454, 54.949
Yxy	17.6945, 0.4518, 0.3831
Android (android.graphics.Color)	4288898627 (0xFFA36643)
YUV	116.2490, -24.2798, 41.0006
Hunter-Lab	42.0649, 14.9419, 18.6971

# Details

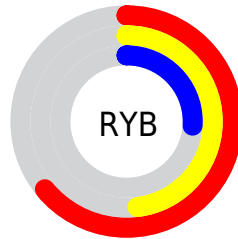
The Android color `4288898627` is a dark color, and the websafe version is hex `996633`. A complement of this color would be `4282613923`, and the grayscale version is `4285822068`.

A 20% lighter version of the original color is `4292712820`, and `4285216278` is the 20% darker color. If you saturate the color by 10%, you get `4288896051`, and if you desaturate by 10%, it is `4288901203`.

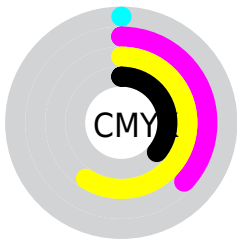
# Distribution



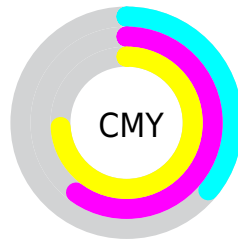
- Red (64%)
- Green (40%)
- Blue (26%)



- Red (64%)
- Yellow (48%)
- Blue (26%)



- Cyan (0%)
- Magenta (37%)
- Yellow (59%)
- Black (36%)



- Cyan (36%)
- Magenta (60%)
- Yellow (74%)

# Brightness & Saturation Gradients

These gradients show how the Android color 4288898627 changes by changing the brightness by 10 percent. The first figure shows a shift by +10% for each color and the second figure -10%.

Similar to the brightness gradients but the following saturation gradients show a change of the Android color 4288898627 by changing the saturation by 10% instead.





4288898627



4288898627

4294967295



4287057452



4292712820



4285216278



4294685838



4283506688



4294955176



4281797120



4294962372



4280221697



4294967264



4278190080

4294967292



4288898627



4288898627



4288896051



4288901203

■ 4288893218

■ 4288904036

■ 4288890642

■ 4288906612

■ 4288888066

■ 4288909188

■ 4288887552

■ 4288912021

■ 4288914597

■ 4288917429

■ 4288920005

■ 4288922582

# Harmonies

## Analogous

The Analogous color harmony consists of three colors that are next to each other on the color wheel.



4289682780



4288898627



4287394102

# Triad

The Triadic color harmony groups three colors that are evenly spaced from another and form a triangle on the color wheel.



4288898627



4278223982



4285493165

# Complementary

The Complementary color scheme is a pair of colors which are on the opposite of each other on the color wheel.



4288898627



4282613923

# Split Complementary

Split-complementary colors differ from the complementary color scheme. The scheme consists of three colors, the original color and two neighbors of the complement color.



4281498290



4288898627



4278224014

# Square

The Square scheme is like the rectangle color scheme, but the four colors are evenly spaced on the color wheel.



4288898627



4282941776



4278223271



4288045977

# Rectangle

The Rectangle color scheme consists of four colors that form a rectangle on the color wheel.



4288898627



4286085175



4278223271



4284380080



# Sweetspot

The Sweet Spot groups the original color and five complimentary colors.



4288898627



4292131758



4288889729



4285226068



4293651435



4285229931



# Same Dimension

The Same Dimension uses a secret algorithm to generate beautiful new colors.



4288898627



4292113469



4288910659



4283583561



4287706368



4279371520



# Inverse Universe

The Inverse Universe completely reimagines the original color for something new.



4282613923



4282228180



4282601891



4282994514



4278213777

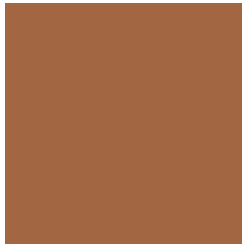


4278192914



# Previews

## White Background



This preview shows how the Android color 4288898627 looks on a white background.

## Color Contrast Check

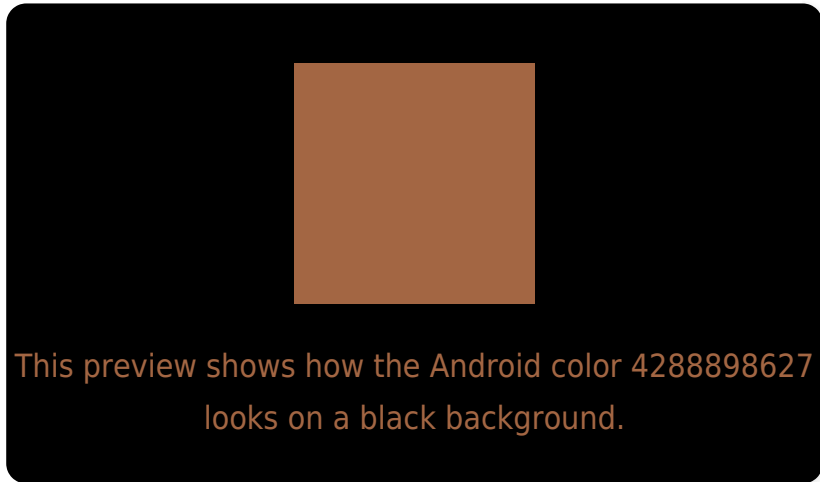
Large Text (above 18pt) WCAG AA ✓ Pass

Any Text WCAG AA ✓ Pass

Large Text (above 18pt) WCAG AAA ✓ Pass

Any Text WCAG AAA × Fail

# Black Background



## Color Contrast Check

Large Text (above 18pt) WCAG AA ✓ Pass

Any Text WCAG AA ✓ Pass

Large Text (above 18pt) WCAG AAA ✓ Pass

Any Text WCAG AAA × Fail

If you want to check with other color combinations, try the [Color Contrast Checker](#).



# Android 4288898627 Background



This preview shows how black text looks on a background with the Android color 4288898627.



This preview shows how white text looks on a background with the Android color 4288898627.

# Color Blindness Simulation

Color vision deficiency is a very complex topic, and I could not describe the different causes any better than Wikipedia does, so if you want to learn more, you should check out their [article about color blindness](#).

## Dichromacy



**Original Color**  
4288898627

**Protanopia**  
4286608713

**Deuteranopia**  
4287590465



# Trichromacy



**Original Color**  
4288898627

**Protanomaly**  
4287459399

**Deuteranomaly**  
4288048194

**Tritanomaly**  
4289028955

# Monochromacy



**Original Color**  
4288898627

**Achromatopsia**  
4285822068

**Achromatomaly**  
4286934882

# CSS Examples

## Text

The CSS property to change the color of the text to Android 4288898627 is called "color". The color property can be set on classes, ids or directly on the HTML element.

This example shows how text in the color `rgb(163, 102, 67)` looks like.

```
.text, #text, p{  
    color:rgb(163, 102, 67)  
}
```

If you want to add a text shadow in that color use the text-shadow property, you can generate a text shadow directly with our [CSS Text Shadow Generator](#).

Here you see how black text with a 4 pixel rgb(163, 102, 67) colored shadow looks like.

```
.shadow{ text-shadow: 4px 4px 2px rgb(163, 102, 67) }
```

## Border

The CSS property to change the border of an element to Android 4288898627 is called "border". The border property can be set on classes, ids or directly on the HTML element.

This example shows the color as border, it can be applied via the CSS property "border" or "border-color".

```
.border, #border, table{ border:4px solid rgb(163, 102, 67) }
```

If only the border color should be changed use the property border-color.

```
.border{ border-color:rgb(163, 102, 67) }
```

If you want to add a box shadow in that color use:

Here you see how a box with a 4 pixel rgb(163, 102, 67) colored shadow looks like.

```
.boxshadow{ -moz-box-shadow:4px 4px 4px  
4px rgb(163, 102, 67); -webkit-box-  
shadow:4px 4px 4px 4px rgb(163, 102, 67);  
box-shadow:4px 4px 4px 4px rgb(163, 102,  
67) }
```

# Background

The CSS property to change the background color of an element to Android 4288898627 is called "background". The background property can be set on classes, ids or directly on the HTML element.

```
.background, #background, body{  
background: rgb(163, 102, 67) }
```

If only the background color should be changed can be used:

```
.background{ background-color: rgb(163,  
102, 67) }
```

This example shows the color as background, it is applied via the CSS property "background".

To optimize and compress your CSS code, you can use our [online CSS compressor and optimizer](#) based on csstidy. If you want to create a linear or radial gradient as background or border, check our [CSS Gradient Generator](#).



Hey! You found this booklet interesting? Support Converting Colors with the new Membership Option!

The pro membership hides all ads, plus gives you double the colors in the color bucket, and more awesome pro features!

**[Learn more, Memberships starting at \\$2.50/m!](#)**

**Follow me  
on Twitter!**

@ConvertingColor