

# Converting Colors

Android(4288900695)

Have a look what the booklet for  
Android(4288900695) contains.

<b>Android(4288900695)</b> .....	3
<b><i>Conversions</i></b> .....	4
<b><i>Details</i></b> .....	6
<b><i>Harmonies</i></b> .....	11
<b><i>Previews</i></b> .....	23
<b><i>Color Blindness Simulation</i></b> .....	26
<b><i>CSS Examples</i></b> .....	29

# Color

**Android(4288900695)**

# Conversions

## Conversions Part 1

<b>Format</b>	<b>Color</b>
Hex	A36E57
RGB	163, 110, 87
RGB Percent	64%, 43%, 34%
CMY	0.3608, 0.5686, 0.6588
CMYK	0.00, 0.33, 0.47, 0.36
HSL	18°, 30%, 49%
HSV	18°, 47%, 64%
XYZ	22.4005, 19.6265, 11.6245
YIQ	123.2250, 38.9710, 4.0830

# Conversions

## Conversions Part 2

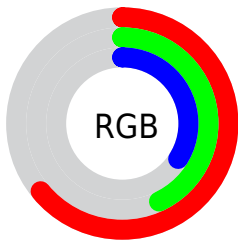
<b>Format</b>	<b>Color</b>
<b>R<sub>YB</sub></b>	163, 120, 87
Decimal	10710615
CIE Lab	51.41, 18.28, 21.35
CIE LCh	51, 28.104, 49.434
Yxy	19.6265, 0.4175, 0.3658
Android (android.graphics.Color)	4288900695 (0xFFA36E57)
YUV	123.2250, -17.8589, 34.8827
Hunter-Lab	44.3018, 12.7274, 15.4540

# Details

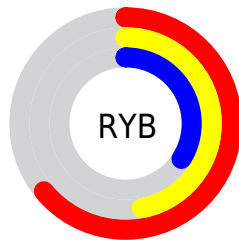
The Android color **4288900695** is a dark color, and the websafe version is hex **996666**. A complement of this color would be **4283927715**, and the grayscale version is **4286282619**.

A 20% lighter version of the original color is **4292649609**, and **4285349417** is the 20% darker color. If you saturate the color by 10%, you get **4288897863**, and if you desaturate by 10%, it is **4288903527**.

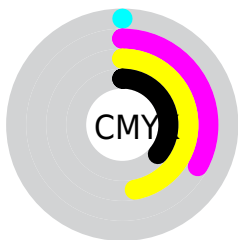
# Distribution



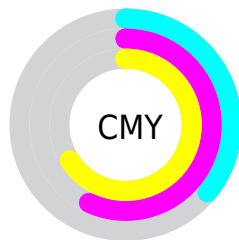
- Red (64%)
- Green (43%)
- Blue (34%)



- Red (64%)
- Yellow (47%)
- Blue (34%)



- Cyan (0%)
- Magenta (33%)
- Yellow (47%)
- Black (36%)



- Cyan (36%)
- Magenta (57%)
- Yellow (66%)

# Brightness & Saturation Gradients

These gradients show how the Android color 4288900695 changes by changing the brightness by 10 percent. The first figure shows a shift by +10% for each color and the second figure -10%.

Similar to the brightness gradients but the following saturation gradients show a change of the Android color 4288900695 by changing the saturation by 10% instead.





4288900695



4288900695

4294967295



4287124800



4292649609



4285349417



4294557091



4283639572



4294957503



4281995776



4294964698



4280483840



4294967287



4278190080



4288900695



4288900695



4288897863



4288903527



4288894774



4288906616

 4288891942

 4288909448

 4288889110

 4288912280

 4288886022

 4288915369

 4288884992

 4288918201

 4288921289

 4288924121

 4288926954

# Harmonies

## Analogous

The Analogous color harmony consists of three colors that are next to each other on the color wheel.



4289358188



4288900695



4287788619

# Triad

The Triadic color harmony groups three colors that are evenly spaced from another and form a triangle on the color wheel.



4288900695



4282484593



4285626280

# Complementary

The Complementary color scheme is a pair of colors which are on the opposite of each other on the color wheel.



4288900695



4283927715

# Split Complementary

Split-complementary colors differ from the complementary color scheme. The scheme consists of three colors, the original color and two neighbors of the complement color.



4283072425



4288900695



4280584074

# Square

The Square scheme is like the rectangle color scheme, but the four colors are evenly spaced on the color wheel.



4288900695



4284449883



4280714654



4287655834

# Rectangle

The Rectangle color scheme consists of four colors that form a rectangle on the color wheel.



4288900695



4286806859



4280714654



4284840618



# Sweetspot

The Sweet Spot groups the original color and five complimentary colors.



4288900695



4292132790



4288894860



4285226585



4293651435



4285229931



# Same Dimension

The Same Dimension uses a secret algorithm to generate beautiful new colors.



4288900695



4292116829



4288910423



4283583561



4287704064



4279371008



# Inverse Universe

The Inverse Universe completely reimagines the original color for something new.



4283927715



4284330196



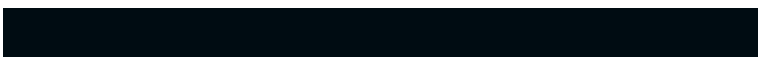
4283917987



4282994514



4278216081

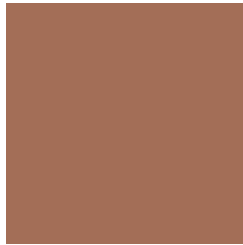


4278193170



# Previews

## White Background



This preview shows how the Android color 4288900695 looks on a white background.

## Color Contrast Check

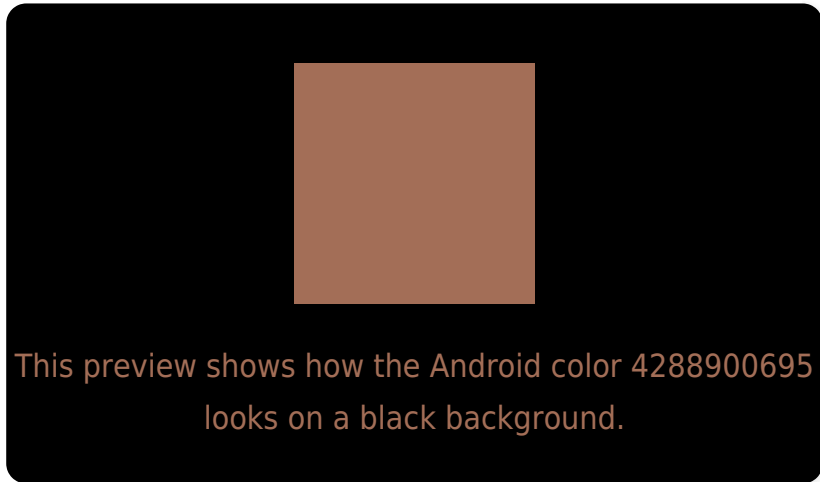
Large Text (above 18pt) WCAG AA ✓ Pass

Any Text WCAG AA ✗ Fail

Large Text (above 18pt) WCAG AAA ✗ Fail

Any Text WCAG AAA ✗ Fail

# Black Background



## Color Contrast Check

Large Text (above 18pt) WCAG AA ✓ Pass

Any Text WCAG AA ✓ Pass

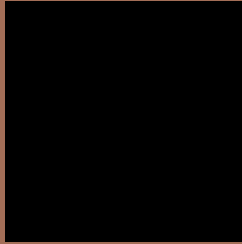
Large Text (above 18pt) WCAG AAA ✓ Pass

Any Text WCAG AAA × Fail

If you want to check with other color combinations, try the [Color Contrast Checker](#).



# Android 4288900695 Background



This preview shows how black text looks on a background with the Android color 4288900695.



This preview shows how white text looks on a background with the Android color 4288900695.

# Color Blindness Simulation

Color vision deficiency is a very complex topic, and I could not describe the different causes any better than Wikipedia does, so if you want to learn more, you should check out their [article about color blindness](#).

## Dichromacy



**Original Color**  
4288900695

**Protanopia**  
4286872413

**Deuteranopia**  
4287788630



# Trichromacy



**Original Color**  
4288900695

**Protanomaly**  
4287592027

**Deuteranomaly**  
4288181078

**Tritanomaly**  
4288965480

# Monochromacy



**Original Color**  
4288900695

**Achromatopsia**  
4286282619

**Achromatomaly**  
4287264366

# CSS Examples

## Text

The CSS property to change the color of the text to Android 4288900695 is called "color". The color property can be set on classes, ids or directly on the HTML element.

This example shows how text in the color `rgb(163, 110, 87)` looks like.

```
.text, #text, p{  
    color:rgb(163, 110, 87)  
}
```

If you want to add a text shadow in that color use the text-shadow property, you can generate a text shadow directly with our [CSS Text Shadow Generator](#).

Here you see how black text with a 4 pixel rgb(163, 110, 87) colored shadow looks like.

```
.shadow{ text-shadow: 4px 4px 2px rgb(163, 110, 87) }
```

## Border

The CSS property to change the border of an element to Android 4288900695 is called "border". The border property can be set on classes, ids or directly on the HTML element.

This example shows the color as border, it can be applied via the CSS property "border" or "border-color".

```
.border, #border, table{ border:4px solid rgb(163, 110, 87) }
```

If only the border color should be changed use the property `border-color`.

```
.border{ border-color:rgb(163, 110, 87) }
```

If you want to add a box shadow in that color use:

Here you see how a box with a 4 pixel `rgb(163, 110, 87)` colored shadow looks like.

```
.boxshadow{ -moz-box-shadow:4px 4px 4px 4px rgb(163, 110, 87); -webkit-box-shadow:4px 4px 4px 4px rgb(163, 110, 87); box-shadow:4px 4px 4px 4px rgb(163, 110, 87) }
```

# Background

The CSS property to change the background color of an element to Android 4288900695 is called "background". The background property can be set on classes, ids or directly on the HTML element.

```
.background, #background, body{  
background: rgb(163, 110, 87) }
```

If only the background color should be changed can be used:

```
.background{ background-color: rgb(163,  
110, 87) }
```

This example shows the color as background, it is applied via the CSS property "background".

To optimize and compress your CSS code, you can use our [online CSS compressor and optimizer](#) based on csstidy. If you want to create a linear or radial gradient as background or border, check our [CSS Gradient Generator](#).



Hey! You found this booklet interesting? Support Converting Colors with the new Membership Option!

The pro membership hides all ads, plus gives you double the colors in the color bucket, and more awesome pro features!

**[Learn more, Memberships starting at \\$2.50/m!](#)**

**Follow me  
on Twitter!**

@ConvertingColor