

# Converting Colors

Android(4288901194)

Have a look what the booklet for  
Android(4288901194) contains.

<b>Android(4288901194)</b> .....	3
<i><b>Conversions</b></i> .....	4
<i><b>Details</b></i> .....	6
<i><b>Harmonies</b></i> .....	11
<i><b>Previews</b></i> .....	23
<i><b>Color Blindness Simulation</b></i> .....	26
<i><b>CSS Examples</b></i> .....	29

**Color**

**Android(4288901194)**

# Conversions

## Conversions Part 1

<b>Format</b>	<b>Color</b>
Hex	A3704A
RGB	163, 112, 74
RGB Percent	64%, 44%, 29%
CMY	0.3608, 0.5608, 0.7098
CMYK	0.00, 0.31, 0.55, 0.36
HSL	26°, 38%, 46%
HSV	26°, 55%, 64%
XYZ	22.1345, 19.8693, 9.1471
YIQ	122.9170, 42.5940, -1.0060

# Conversions

## Conversions Part 2

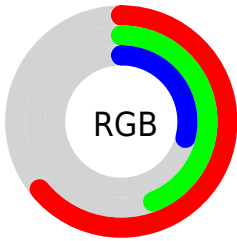
<b>Format</b>	<b>Color</b>
<b>R<sub>YB</sub></b>	163, 140, 74
Decimal	10711114
CIE <sub>Lab</sub>	51.69, 15.86, 29.11
CIE <sub>LCh</sub>	52, 33.150, 61.425
Yxy	19.8693, 0.4327, 0.3884
Android (android.graphics.Color)	4288901194 (0xFFA3704A)
YUV	122.9170, -24.1161, 35.1528
Hunter-Lab	44.5750, 10.6310, 19.0357

# Details

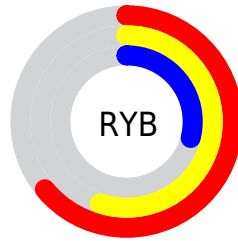
The Android color **4288901194** is a dark color, and the websafe version is hex **996633**. A complement of this color would be **4283071907**, and the grayscale version is **4286282619**.

A 20% lighter version of the original color is **4292650107**, and **4285284381** is the 20% darker color. If you saturate the color by 10%, you get **4288898874**, and if you desaturate by 10%, it is **4288903514**.

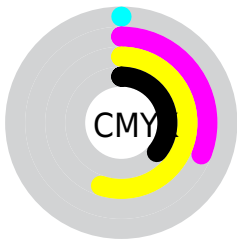
# Distribution



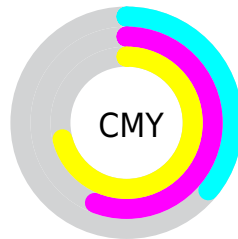
- Red (64%)
- Green (44%)
- Blue (29%)



- Red (64%)
- Yellow (55%)
- Blue (29%)



- Cyan (0%)
- Magenta (31%)
- Yellow (55%)
- Black (36%)



- Cyan (36%)
- Magenta (56%)
- Yellow (71%)

# Brightness & Saturation Gradients

These gradients show how the Android color 4288901194 changes by changing the brightness by 10 percent. The first figure shows a shift by +10% for each color and the second figure -10%.

Similar to the brightness gradients but the following saturation gradients show a change of the Android color 4288901194 by changing the saturation by 10% instead.





4288901194



4288901194

4294967295



4287059763



4292650107



4285284381



4294623125



4283574789



4294958000



4281865472



4294965196



4280352768



4294967272



4278190080



4288901194



4288901194



4288898874



4288903514



4288896297



4288906091

■ 4288893977

■ 4288908411

■ 4288891657

■ 4288910731

■ 4288890368

■ 4288913307

■ 4288915628

■ 4288917948

■ 4288920524

■ 4288922845

# Harmonies

## Analogous

The Analogous color harmony consists of three colors that are next to each other on the color wheel.



4289750879



4288901194



4287396418

# Triad

The Triadic color harmony groups three colors that are evenly spaced from another and form a triangle on the color wheel.



4288901194



4279995004



4286608300

# Complementary

The Complementary color scheme is a pair of colors which are on the opposite of each other on the color wheel.



4288901194



4283071907

# Split Complementary

Split-complementary colors differ from the complementary color scheme. The scheme consists of three colors, the original color and two neighbors of the complement color.



4283596468



4288901194



4278225304

# Square

The Square scheme is like the rectangle color scheme, but the four colors are evenly spaced on the color wheel.



4288901194



4283205727



4278617516



4288702871

# Rectangle

The Rectangle color scheme consists of four colors that form a rectangle on the color wheel.



4288901194



4286152773



4278617516



4285691824



# Sweetspot

The Sweet Spot groups the original color and five complimentary colors.



4288901194



4292133042



4288891518



4285226839



4293651435



4285229931



# Same Dimension

The Same Dimension uses a secret algorithm to generate beautiful new colors.



4288901194



4292117576



4288912458



4283583817



4287708672



4279371776



# Inverse Universe

The Inverse Universe completely reimagines the original color for something new.



4283071907



4282947796



4283060643



4282994258



4278211473

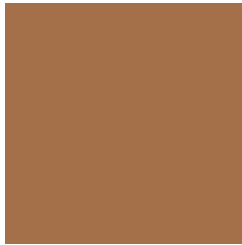


4278192658



# Previews

## White Background



This preview shows how the Android color 4288901194 looks on a white background.

## Color Contrast Check

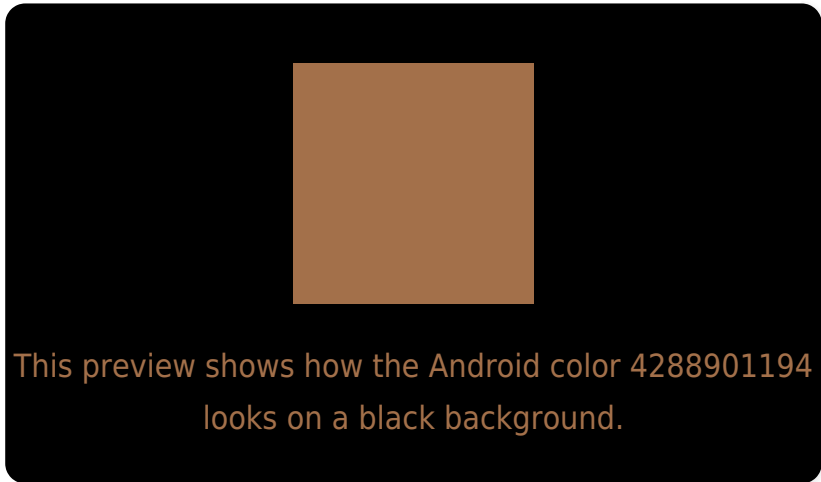
Large Text (above 18pt) WCAG AA ✓ Pass

Any Text WCAG AA ✗ Fail

Large Text (above 18pt) WCAG AAA ✗ Fail

Any Text WCAG AAA ✗ Fail

# Black Background



## Color Contrast Check

Large Text (above 18pt) WCAG AA ✓ Pass

Any Text WCAG AA ✓ Pass

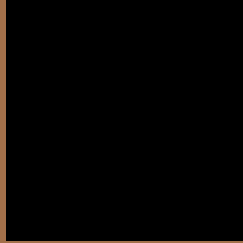
Large Text (above 18pt) WCAG AAA ✓ Pass

Any Text WCAG AAA × Fail

If you want to check with other color combinations, try the [Color Contrast Checker](#).



# Android 4288901194 Background



This preview shows how black text looks on a background with the Android color 4288901194.



This preview shows how white text looks on a background with the Android color 4288901194.

# Color Blindness Simulation

Color vision deficiency is a very complex topic, and I could not describe the different causes any better than Wikipedia does, so if you want to learn more, you should check out their [article about color blindness](#).

## Dichromacy



**Original Color**  
4288901194

**Protanopia**  
4287069262

**Deuteranopia**  
4288050761



# Trichromacy



**Original Color**  
4288901194

**Protanomaly**  
4287723597

**Deuteranomaly**  
4288377929

**Tritanomaly**  
4289031524

# Monochromacy



**Original Color**  
4288901194

**Achromatopsia**  
4286282619

**Achromatomaly**  
4287264617

# CSS Examples

## Text

The CSS property to change the color of the text to Android 4288901194 is called "color". The color property can be set on classes, ids or directly on the HTML element.

This example shows how text in the color `rgb(163, 112, 74)` looks like.

```
.text, #text, p{  
    color:rgb(163, 112, 74)  
}
```

If you want to add a text shadow in that color use the text-shadow property, you can generate a text shadow directly with our [CSS Text Shadow Generator](#).

Here you see how black text with a 4 pixel rgb(163, 112, 74) colored shadow looks like.

```
.shadow{ text-shadow: 4px 4px 2px rgb(163, 112, 74) }
```

## Border

The CSS property to change the border of an element to Android 4288901194 is called "border". The border property can be set on classes, ids or directly on the HTML element.

This example shows the color as border, it can be applied via the CSS property "border" or "border-color".

```
.border, #border, table{ border:4px solid rgb(163, 112, 74) }
```

If only the border color should be changed use the property `border-color`.

```
.border{ border-color:rgb(163, 112, 74) }
```

If you want to add a box shadow in that color use:

Here you see how a box with a 4 pixel `rgb(163, 112, 74)` colored shadow looks like.

```
.boxshadow{ -moz-box-shadow:4px 4px 4px  
4px rgb(163, 112, 74); -webkit-box-  
shadow:4px 4px 4px 4px rgb(163, 112, 74);  
box-shadow:4px 4px 4px 4px rgb(163, 112,  
74) }
```

# Background

The CSS property to change the background color of an element to Android 4288901194 is called "background". The background property can be set on classes, ids or directly on the HTML element.

```
.background, #background, body{  
background: rgb(163, 112, 74) }
```

If only the background color should be changed can be used:

```
.background{ background-color: rgb(163,  
112, 74) }
```

This example shows the color as background, it is applied via the CSS property "background".

To optimize and compress your CSS code, you can use our [online CSS compressor and optimizer](#) based on csstidy. If you want to create a linear or radial gradient as background or border, check our [CSS Gradient Generator](#).



Hey! You found this booklet interesting? Support Converting Colors with the new Membership Option!

The pro membership hides all ads, plus gives you double the colors in the color bucket, and more awesome pro features!

**[Learn more, Memberships starting at \\$2.50/m!](#)**

**Follow me  
on Twitter!**

@ConvertingColor