

Converting Colors

Android(4288906604)

Have a look what the booklet for
Android(4288906604) contains.

Android(4288906604)	3
<i>Conversions</i>	4
<i>Details</i>	6
<i>Harmonies</i>	11
<i>Previews</i>	23
<i>Color Blindness Simulation</i>	26
<i>CSS Examples</i>	29

Color

Android(4288906604)

Conversions

Conversions Part 1

Format	Color
Hex	A3856C
RGB	163, 133, 108
RGB Percent	64%, 52%, 42%
CMY	0.3608, 0.4784, 0.5765
CMYK	0.00, 0.18, 0.34, 0.36
HSL	27°, 23%, 53%
HSV	27°, 34%, 64%
XYZ	26.1986, 25.6443, 17.7564
YIQ	139.1200, 25.9050, -1.4150

Conversions

Conversions Part 2

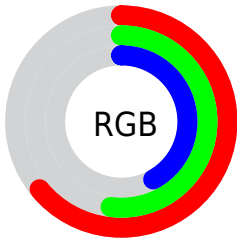
Format	Color
R_{YB}	163, 154, 108
Decimal	10716524
CIE _{Lab}	57.70, 7.74, 17.80
CIE _{LCh}	58, 19.405, 66.507
Yxy	25.6443, 0.3764, 0.3685
Android (android.graphics.Color)	4288906604 (0xFFA3856C)
YUV	139.1200, -15.3422, 20.9428
Hunter-Lab	50.6402, 3.7261, 14.6588

Details

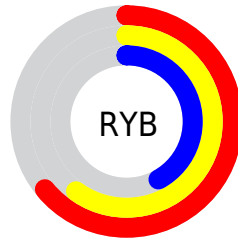
The Android color `4288906604` is a dark color, and the websafe version is hex `996666`. A complement of this color would be `4285303459`, and the grayscale version is `4287335307`.

A 20% lighter version of the original color is `4292590240`, and `4285420604` is the 20% darker color. If you saturate the color by 10%, you get `4288904284`, and if you desaturate by 10%, it is `4288908924`.

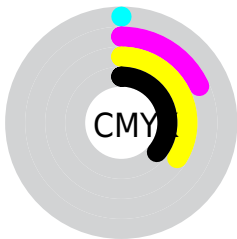
Distribution



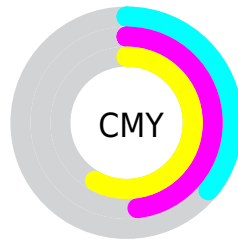
- Red (64%)
- Green (52%)
- Blue (42%)



- Red (64%)
- Yellow (60%)
- Blue (42%)



- Cyan (0%)
- Magenta (18%)
- Yellow (34%)
- Black (36%)



- Cyan (36%)
- Magenta (48%)
- Yellow (58%)

Brightness & Saturation Gradients

These gradients show how the Android color 4288906604 changes by changing the brightness by 10 percent. The first figure shows a shift by +10% for each color and the second figure -10%.

Similar to the brightness gradients but the following saturation gradients show a change of the Android color 4288906604 by changing the saturation by 10% instead.



4288906604



4288906604

4294967295



4287130708



4292590240



4285420604



4294497979



4283776038



4294963926



4282197778



4294967283



4280685056



4278190080



4288906604



4288906604



4288904284



4288908924



4288901963



4288911245

■ 4288899643

■ 4288913565

■ 4288897323

■ 4288915885

■ 4288895259

■ 4288917950

■ 4288892938

■ 4288920270

■ 4288891392

■ 4288922590

■ 4288924910

■ 4288927231

Harmonies

Analogous

The Analogous color harmony consists of three colors that are next to each other on the color wheel.



4289495159



4288906604



4287925097

Triad

The Triadic color harmony groups three colors that are evenly spaced from another and form a triangle on the color wheel.



4288906604



4284454030



4287792550

Complementary

The Complementary color scheme is a pair of colors which are on the opposite of each other on the color wheel.



4288906604



4285303459

Split Complementary

Split-complementary colors differ from the complementary color scheme. The scheme consists of three colors, the original color and two neighbors of the complement color.



4286286764



4288906604



4284191646

Square

The Square scheme is like the rectangle color scheme, but the four colors are evenly spaced on the color wheel.



4288906604



4285436797



4284911785



4288970904

Rectangle

The Rectangle color scheme consists of four colors that form a rectangle on the color wheel.



4288906604



4287073900



4284911785



4287334313

Sweetspot

The Sweet Spot groups the original color and five complimentary colors.



4288906604



4292135102



4288900234



4285228126



4293651435



4285229931

Same Dimension

The Same Dimension uses a secret algorithm to generate beautiful new colors.



4288906604



4292126079



4288913516



4283583817



4287709696



4279371776

Inverse Universe

The Inverse Universe completely reimagines the original color for something new.



4285303459



4286557652



4285296547



4282994258



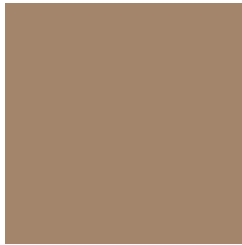
4278210449



4278192658

Previews

White Background



This preview shows how the Android color 4288906604 looks on a white background.

Color Contrast Check

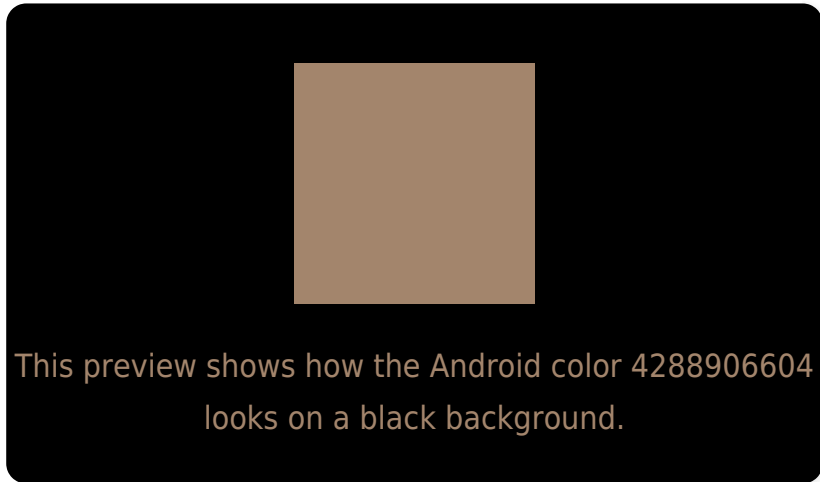
Large Text (above 18pt) WCAG AA ✓ Pass

Any Text WCAG AA ✗ Fail

Large Text (above 18pt) WCAG AAA ✗ Fail

Any Text WCAG AAA ✗ Fail

Black Background



Color Contrast Check

Large Text (above 18pt) WCAG AA ✓ Pass

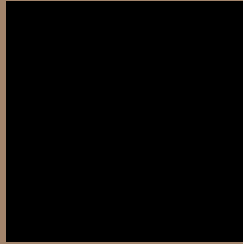
Any Text WCAG AA ✓ Pass

Large Text (above 18pt) WCAG AAA ✓ Pass

Any Text WCAG AAA × Fail

If you want to check with other color combinations, try the [Color Contrast Checker](#).

Android 4288906604 Background



This preview shows how black text looks on a background with the Android color 4288906604.



This preview shows how white text looks on a background with the Android color 4288906604.

Color Blindness Simulation

Color vision deficiency is a very complex topic, and I could not describe the different causes any better than Wikipedia does, so if you want to learn more, you should check out their [article about color blindness](#).


Dichromacy



Original Color
4288906604

Protanopia
4287859567

Deuteranopia
4288906604



Tritanopia
4289102219

Trichromacy



Original Color

4288906604

Protanomaly

4288252270

Deuteranomaly

4288906604

Tritanomaly

4289036928

Monochromacy



Original Color

4288906604

Achromatopsia

4287335307

Achromatomaly

4287924608

CSS Examples

Text

The CSS property to change the color of the text to Android 4288906604 is called "color". The color property can be set on classes, ids or directly on the HTML element.

This example shows how text in the color `rgb(163, 133, 108)` looks like.

```
.text, #text, p{  
    color:rgb(163, 133, 108)  
}
```

If you want to add a text shadow in that color use the text-shadow property, you can generate a text shadow directly with our [CSS Text Shadow Generator](#).

Here you see how black text with a 4 pixel rgb(163, 133, 108) colored shadow looks like.

```
.shadow{ text-shadow: 4px 4px 2px rgb(163, 133, 108) }
```

Border

The CSS property to change the border of an element to Android 4288906604 is called "border". The border property can be set on classes, ids or directly on the HTML element.

This example shows the color as border, it can be applied via the CSS property "border" or "border-color".

```
.border, #border, table{ border:4px solid rgb(163, 133, 108) }
```

If only the border color should be changed use the property `border-color`.

```
.border{ border-color:rgb(163, 133, 108) }
```

If you want to add a box shadow in that color use:

Here you see how a box with a 4 pixel `rgb(163, 133, 108)` colored shadow looks like.

```
.boxshadow{ -moz-box-shadow:4px 4px 4px  
4px rgb(163, 133, 108); -webkit-box-  
shadow:4px 4px 4px 4px rgb(163, 133, 108);  
box-shadow:4px 4px 4px 4px rgb(163, 133,  
108) }
```

Background

The CSS property to change the background color of an element to Android 4288906604 is called "background". The background property can be set on classes, ids or directly on the HTML element.

```
.background, #background, body{  
background: rgb(163, 133, 108) }
```

If only the background color should be changed can be used:

```
.background{ background-color: rgb(163,  
133, 108) }
```

This example shows the color as background, it is applied via the CSS property "background".

To optimize and compress your CSS code, you can use our [online CSS compressor and optimizer](#) based on csstidy. If you want to create a linear or radial gradient as background or border, check our [CSS Gradient Generator](#).

Hey! You found this booklet interesting? Support Converting Colors with the new Membership Option!

The pro membership hides all ads, plus gives you double the colors in the color bucket, and more awesome pro features!

[Learn more, Memberships starting at \\$2.50/m!](#)

**Follow me
on Twitter!**

@ConvertingColor