

Converting Colors

Android(4288970345)

Have a look what the booklet for
Android(4288970345) contains.

Android(4288970345)	3
<i>Conversions</i>	4
<i>Details</i>	6
<i>Harmonies</i>	11
<i>Previews</i>	23
<i>Color Blindness Simulation</i>	26
<i>CSS Examples</i>	29

Color

Android(4288970345)

Conversions

Conversions Part 1

Format	Color
Hex	A47E69
RGB	164, 126, 105
RGB Percent	64%, 49%, 41%
CMY	0.3569, 0.5059, 0.5882
CMYK	0.00, 0.23, 0.36, 0.36
HSL	21°, 24%, 53%
HSV	21°, 36%, 64%
XYZ	25.3205, 23.8341, 16.6305
YIQ	134.9680, 29.3890, 1.5250

Conversions

Conversions Part 2

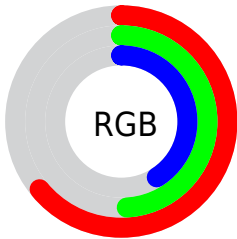
Format	Color
RYB	164, 138, 105
Decimal	10780265
CIELab	55.92, 11.72, 17.09
CIElCh	56, 20.724, 55.572
Yxy	23.8341, 0.3849, 0.3623
Android (android.graphics.Color)	4288970345 (0xFFA47E69)
YUV	134.9680, -14.7742, 25.4611
Hunter-Lab	48.8202, 7.1432, 13.9771

Details

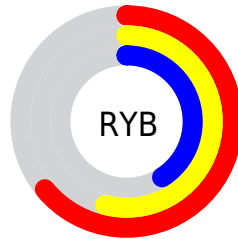
The Android color `4288970345` is a dark color, and the websafe version is hex `996666`. A complement of this color would be `4285108132`, and the grayscale version is `4287072135`.

A 20% lighter version of the original color is `4292653980`, and `4285484346` is the 20% darker color. If you saturate the color by 10%, you get `4288967513`, and if you desaturate by 10%, it is `4288973177`.

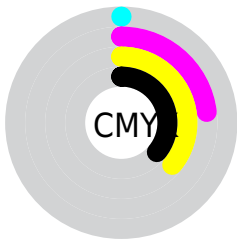
Distribution



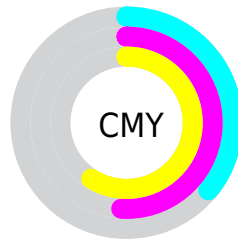
- Red (64%)
- Green (49%)
- Blue (41%)



- Red (64%)
- Yellow (54%)
- Blue (41%)



- Cyan (0%)
- Magenta (23%)
- Yellow (36%)
- Black (36%)



- Cyan (36%)
- Magenta (51%)
- Yellow (59%)

Brightness & Saturation Gradients

These gradients show how the Android color 4288970345 changes by changing the brightness by 10 percent. The first figure shows a shift by +10% for each color and the second figure -10%.

Similar to the brightness gradients but the following saturation gradients show a change of the Android color 4288970345 by changing the saturation by 10% instead.



4288970345



4288970345

4294967295



4287194449



4292653980



4285484346



4294561463



4283774500



4294961875



4282196239



4294967279



4280683264



4278190080



4288970345



4288970345



4288967513



4288973177



4288964936



4288975754

 4288962104

 4288978586

 4288959527

 4288981163

 4288956695

 4288983995

 4288954119

 4288986571

 4288952832

 4288989404

 4288992236

 4288994813

Harmonies

Analogous

The Analogous color harmony consists of three colors that are next to each other on the color wheel.



4289428087



4288970345



4288054370

Triad

The Triadic color harmony groups three colors that are evenly spaced from another and form a triangle on the color wheel.



4288970345



4284256387



4286939814

Complementary

The Complementary color scheme is a pair of colors which are on the opposite of each other on the color wheel.



4288970345



4285108132

Split Complementary

Split-complementary colors differ from the complementary color scheme. The scheme consists of three colors, the original color and two neighbors of the complement color.



4285302953



4288970345



4283535509

Square

The Square scheme is like the rectangle color scheme, but the four colors are evenly spaced on the color wheel.



4288970345



4285435505



4283993507



4288380315

Rectangle

The Rectangle color scheme consists of four colors that form a rectangle on the color wheel.



4288970345



4287268963



4283993507



4286416040

Sweetspot

The Sweet Spot groups the original color and five complimentary colors.



4288970345



4292265919



4288965007



4285227613



4293651435



4285229931

Same Dimension

The Same Dimension uses a secret algorithm to generate beautiful new colors.



4288970345



4292254586



4288977769



4283583561



4287706112



4279371264

Inverse Universe

The Inverse Universe completely reimagines the original color for something new.



4285108132



4286232022



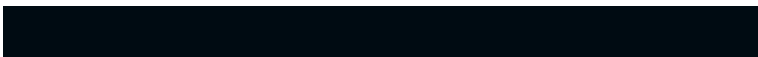
4285100708



4282994514



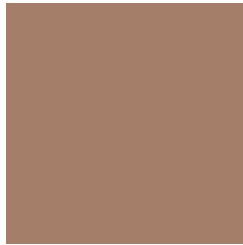
4278214289



4278192914

Previews

White Background



This preview shows how the Android color 4288970345 looks on a white background.

Color Contrast Check

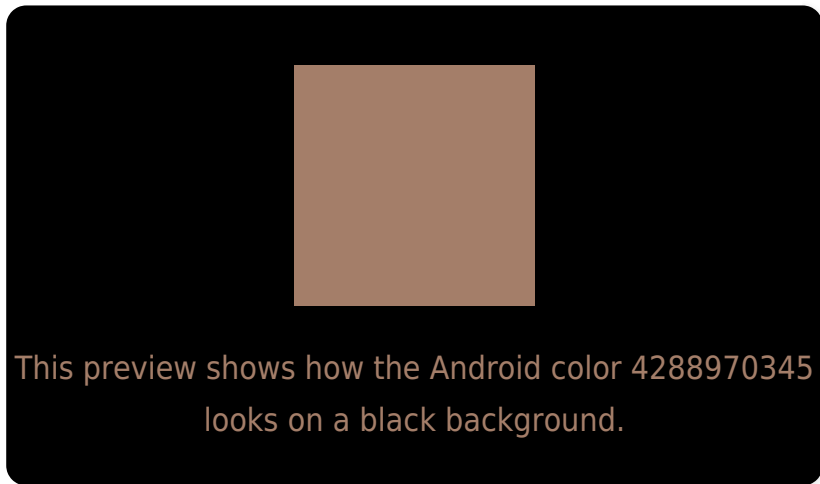
Large Text (above 18pt) WCAG AA ✓ Pass

Any Text WCAG AA ✗ Fail

Large Text (above 18pt) WCAG AAA ✗ Fail

Any Text WCAG AAA ✗ Fail

Black Background



Color Contrast Check

Large Text (above 18pt) WCAG AA ✓ Pass

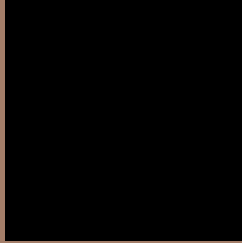
Any Text WCAG AA ✓ Pass

Large Text (above 18pt) WCAG AAA ✓ Pass

Any Text WCAG AAA × Fail

If you want to check with other color combinations, try the [Color Contrast Checker](#).

Android 4288970345 Background



This preview shows how black text looks on a background with the Android color 4288970345.



This preview shows how white text looks on a background with the Android color 4288970345.

Color Blindness Simulation

Color vision deficiency is a very complex topic, and I could not describe the different causes any better than Wikipedia does, so if you want to learn more, you should check out their [article about color blindness](#).

Dichromacy



Original Color


4288970345

Protanopia

4287530605

Deuteranopia

4288512360



Tritanopia
4289165956

Trichromacy



Original Color
4288970345

Protanomaly
4288054124

Deuteranomaly
4288708712

Tritanomaly
4289100666

Monochromacy



Original Color
4288970345

Achromatopsia
4287072135

Achromatomaly
4287792252

CSS Examples

Text

The CSS property to change the color of the text to Android 4288970345 is called "color". The color property can be set on classes, ids or directly on the HTML element.

This example shows how text in the color `rgb(164, 126, 105)` looks like.

```
.text, #text, p{  
    color:rgb(164, 126, 105)  
}
```

If you want to add a text shadow in that color use the text-shadow property, you can generate a text shadow directly with our [CSS Text Shadow Generator](#).

Here you see how black text with a 4 pixel rgb(164, 126, 105) colored shadow looks like.

```
.shadow{ text-shadow: 4px 4px 2px rgb(164, 126, 105) }
```

Border

The CSS property to change the border of an element to Android 4288970345 is called "border". The border property can be set on classes, ids or directly on the HTML element.

This example shows the color as border, it can be applied via the CSS property "border" or "border-color".

```
.border, #border, table{ border:4px solid rgb(164, 126, 105) }
```

If only the border color should be changed use the property `border-color`.

```
.border{ border-color:rgb(164, 126, 105) }
```

If you want to add a box shadow in that color use:

Here you see how a box with a 4 pixel `rgb(164, 126, 105)` colored shadow looks like.

```
.boxshadow{ -moz-box-shadow:4px 4px 4px 4px rgb(164, 126, 105); -webkit-box-shadow:4px 4px 4px 4px rgb(164, 126, 105); box-shadow:4px 4px 4px 4px rgb(164, 126, 105) }
```

Background

The CSS property to change the background color of an element to Android 4288970345 is called "background". The background property can be set on classes, ids or directly on the HTML element.

```
.background, #background, body{  
background: rgb(164, 126, 105) }
```

If only the background color should be changed can be used:

```
.background{ background-color: rgb(164,  
126, 105) }
```

This example shows the color as background, it is applied via the CSS property "background".

To optimize and compress your CSS code, you can use our [online CSS compressor and optimizer](#) based on csstidy. If you want to create a linear or radial gradient as background or border, check our [CSS Gradient Generator](#).

Hey! You found this booklet interesting? Support Converting Colors with the new Membership Option!

The pro membership hides all ads, plus gives you double the colors in the color bucket, and more awesome pro features!

[Learn more, Memberships starting at \\$2.50/m!](#)

**Follow me
on Twitter!**

@ConvertingColor