

Converting Colors

Android(4288971366)

Have a look what the booklet for
Android(4288971366) contains.

Android(4288971366)	3
<i>Conversions</i>	4
<i>Details</i>	6
<i>Harmonies</i>	11
<i>Previews</i>	23
<i>Color Blindness Simulation</i>	26
<i>CSS Examples</i>	29

Color

Android(4288971366)

Conversions

Conversions Part 1

Format	Color
Hex	A48266
RGB	164, 130, 102
RGB Percent	64%, 51%, 40%
CMY	0.3569, 0.4902, 0.6000
CMYK	0.00, 0.21, 0.38, 0.36
HSL	27°, 25%, 52%
HSV	27°, 38%, 64%
XYZ	25.6907, 24.8171, 16.0065
YIQ	136.9740, 29.2520, -1.5000

Conversions

Conversions Part 2

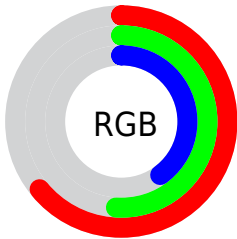
Format	Color
R_{YB}	164, 153, 102
Decimal	10781286
CIE _{Lab}	56.90, 9.07, 20.13
CIE _{LCh}	57, 22.080, 65.738
Yxy	24.8171, 0.3862, 0.3731
Android (android.graphics.Color)	4288971366 (0xFFA48266)
YUV	136.9740, -17.2422, 23.7018
Hunter-Lab	49.8168, 4.8740, 15.8214

Details

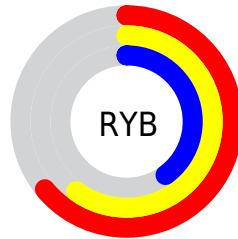
The Android color `4288971366` is a dark color, and the websafe version is hex `CC9966`. A complement of this color would be `4284909732`, and the grayscale version is `4287203721`.

A 20% lighter version of the original color is `4292655001`, and `4285485367` is the 20% darker color. If you saturate the color by 10%, you get `4288969046`, and if you desaturate by 10%, it is `4288973686`.

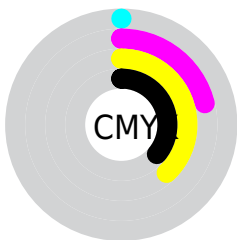
Distribution



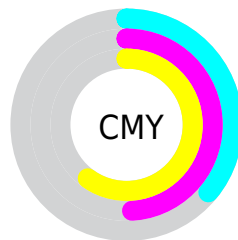
- Red (64%)
- Green (51%)
- Blue (40%)



- Red (64%)
- Yellow (60%)
- Blue (40%)



- Cyan (0%)
- Magenta (21%)
- Yellow (38%)
- Black (36%)



- Cyan (36%)
- Magenta (49%)
- Yellow (60%)

Brightness & Saturation Gradients

These gradients show how the Android color 4288971366 changes by changing the brightness by 10 percent. The first figure shows a shift by +10% for each color and the second figure -10%.

Similar to the brightness gradients but the following saturation gradients show a change of the Android color 4288971366 by changing the saturation by 10% instead.



4288971366



4288971366

4294967295



4287195470



4292655001



4285485367



4294562740



4283775521



4294963152



4282197003



4294967276



4280684544



4278190080



4288971366



4288971366



4288969046



4288973686



4288966725



4288976007

 4288964405

 4288978327

 4288962084

 4288980648

 4288959764

 4288982968

 4288957444

 4288985288

 4288956928

 4288987609

 4288989929

 4288992250

Harmonies

Analogous

The Analogous color harmony consists of three colors that are next to each other on the color wheel.



4289625459



4288971366



4287858786

Triad

The Triadic color harmony groups three colors that are evenly spaced from another and form a triangle on the color wheel.



4288971366



4283798412



4287660712

Complementary

The Complementary color scheme is a pair of colors which are on the opposite of each other on the color wheel.



4288971366



4284909732

Split Complementary

Split-complementary colors differ from the complementary color scheme. The scheme consists of three colors, the original color and two neighbors of the complement color.



4285958574



4288971366



4283404958

Square

The Square scheme is like the rectangle color scheme, but the four colors are evenly spaced on the color wheel.



4288971366



4285043320



4284256171



4288970137

Rectangle

The Rectangle color scheme consists of four colors that form a rectangle on the color wheel.



4288971366



4286942310



4284256171



4287137195

Sweetspot

The Sweet Spot groups the original color and five complimentary colors.



4288971366



4292266431



4288964232



4285227869



4293651435



4285229931

Same Dimension

The Same Dimension uses a secret algorithm to generate beautiful new colors.



4288971366



4292256118



4288979302



4283583817



4287709696



4279371776

Inverse Universe

The Inverse Universe completely reimagines the original color for something new.



4284909732



4285967318



4284901796



4282994258



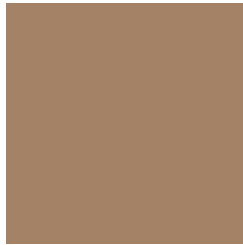
4278210705



4278192658

Previews

White Background



This preview shows how the Android color 4288971366 looks on a white background.

Color Contrast Check

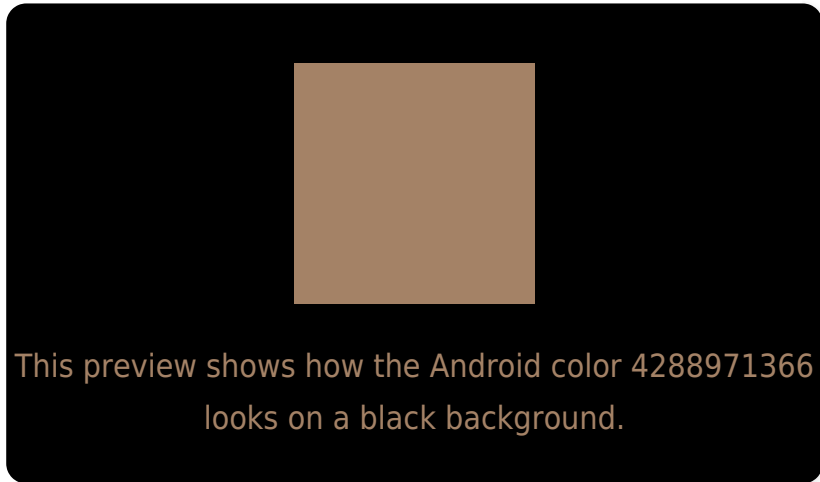
Large Text (above 18pt) WCAG AA ✓ Pass

Any Text WCAG AA ✗ Fail

Large Text (above 18pt) WCAG AAA ✗ Fail

Any Text WCAG AAA ✗ Fail

Black Background



Color Contrast Check

Large Text (above 18pt) WCAG AA ✓ Pass

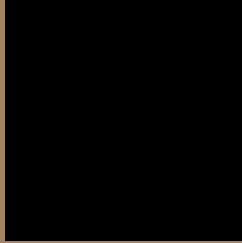
Any Text WCAG AA ✓ Pass

Large Text (above 18pt) WCAG AAA ✓ Pass

Any Text WCAG AAA × Fail

If you want to check with other color combinations, try the [Color Contrast Checker](#).

Android 4288971366 Background



This preview shows how black text looks on a background with the Android color 4288971366.



This preview shows how white text looks on a background with the Android color 4288971366.

Color Blindness Simulation

Color vision deficiency is a very complex topic, and I could not describe the different causes any better than Wikipedia does, so if you want to learn more, you should check out their [article about color blindness](#).


Dichromacy



Original Color
4288971366

Protanopia
4287793513

Deuteranopia
4288775014



Tritanopia
4289166727

Trichromacy



Original Color

4288971366

Protanomaly

4288251496

Deuteranomaly

4288840550

Tritanomaly

4289101691

Monochromacy



Original Color

4288971366

Achromatopsia

4287203721

Achromatomaly

4287858300

CSS Examples

Text

The CSS property to change the color of the text to Android 4288971366 is called "color". The color property can be set on classes, ids or directly on the HTML element.

This example shows how text in the color `rgb(164, 130, 102)` looks like.

```
.text, #text, p{  
    color:rgb(164, 130, 102)  
}
```

If you want to add a text shadow in that color use the text-shadow property, you can generate a text shadow directly with our [CSS Text Shadow Generator](#).

Here you see how black text with a 4 pixel rgb(164, 130, 102) colored shadow looks like.

```
.shadow{ text-shadow: 4px 4px 2px rgb(164, 130, 102) }
```

Border

The CSS property to change the border of an element to Android 4288971366 is called "border". The border property can be set on classes, ids or directly on the HTML element.

This example shows the color as border, it can be applied via the CSS property "border" or "border-color".

```
.border, #border, table{ border:4px solid rgb(164, 130, 102) }
```

If only the border color should be changed use the property `border-color`.

```
.border{ border-color:rgb(164, 130, 102) }
```

If you want to add a box shadow in that color use:

Here you see how a box with a 4 pixel `rgb(164, 130, 102)` colored shadow looks like.

```
.boxshadow{ -moz-box-shadow:4px 4px 4px  
4px rgb(164, 130, 102); -webkit-box-  
shadow:4px 4px 4px 4px rgb(164, 130, 102);  
box-shadow:4px 4px 4px 4px rgb(164, 130,  
102) }
```

Background

The CSS property to change the background color of an element to Android 4288971366 is called "background". The background property can be set on classes, ids or directly on the HTML element.

```
.background, #background, body{  
background: rgb(164, 130, 102) }
```

If only the background color should be changed can be used:

```
.background{ background-color: rgb(164,  
130, 102) }
```

This example shows the color as background, it is applied via the CSS property "background".

To optimize and compress your CSS code, you can use our [online CSS compressor and optimizer](#) based on csstidy. If you want to create a linear or radial gradient as background or border, check our [CSS Gradient Generator](#).

Hey! You found this booklet interesting? Support Converting Colors with the new Membership Option!

The pro membership hides all ads, plus gives you double the colors in the color bucket, and more awesome pro features!

[Learn more, Memberships starting at \\$2.50/m!](#)

**Follow me
on Twitter!**

@ConvertingColor