

Converting Colors

Android(4288973447)

Have a look what the booklet for
Android(4288973447) contains.

Android(4288973447)	3
<i>Conversions</i>	4
<i>Details</i>	6
<i>Harmonies</i>	11
<i>Previews</i>	23
<i>Color Blindness Simulation</i>	26
<i>CSS Examples</i>	29

Color

Android(4288973447)

Conversions

Conversions Part 1

Format	Color
Hex	A48A87
RGB	164, 138, 135
RGB Percent	64%, 54%, 53%
CMY	0.3569, 0.4588, 0.4706
CMYK	0.00, 0.16, 0.18, 0.36
HSL	6°, 14%, 59%
HSV	6°, 18%, 64%
XYZ	28.7715, 27.8187, 26.7748
YIQ	145.4320, 16.4590, 4.5790

Conversions

Conversions Part 2

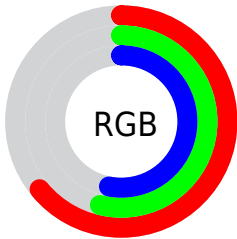
Format	Color
RYB	164, 138, 135
Decimal	10783367
CIELab	59.72, 9.32, 5.26
CIElCh	60, 10.703, 29.433
Yxy	27.8187, 0.3451, 0.3337
Android (android.graphics.Color)	4288973447 (0xFFA48A87)
YUV	145.4320, -5.1430, 16.2841
Hunter-Lab	52.7435, 5.0704, 6.8223

Details

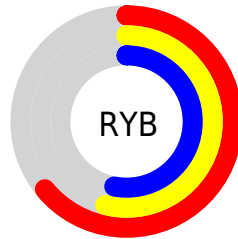
The Android color `4288973447` is a dark color, and the websafe version is hex `999999`. A complement of this color would be `4287078820`, and the grayscale version is `4287730065`.

A 20% lighter version of the original color is `4292591548`, and `4285552725` is the 20% darker color. If you saturate the color by 10%, you get `4288969591`, and if you desaturate by 10%, it is `4288977303`.

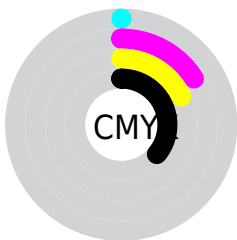
Distribution



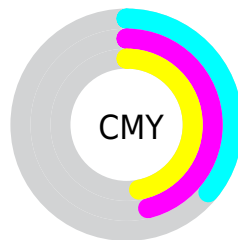
- Red (64%)
- Green (54%)
- Blue (53%)



- Red (64%)
- Yellow (54%)
- Blue (53%)



- Cyan (0%)
- Magenta (16%)
- Yellow (18%)
- Black (36%)



- Cyan (36%)
- Magenta (46%)
- Yellow (47%)

Brightness & Saturation Gradients

These gradients show how the Android color 4288973447 changes by changing the brightness by 10 percent. The first figure shows a shift by +10% for each color and the second figure -10%.

Similar to the brightness gradients but the following saturation gradients show a change of the Android color 4288973447 by changing the saturation by 10% instead.



4288973447



4288973447

4294967295



4287263086



4292591548



4285552725



4294499288



4283908414



4294965492



4282329896



4280882708



4279435264



4278190080



4288973447



4288973447



4288969591




4288977303

 4288965990

 4288980904

 4288962134


 4288984760

 4288958277

 4288988617

 4288954421

 4288992473

 4288950821

 4288996073

 4288946964

 4288999930

 4288943108

 4289003519

 4288942336

Harmonies

Analogous

The Analogous color harmony consists of three colors that are next to each other on the color wheel.



4288907920



4288973447



4288711808

Triad

The Triadic color harmony groups three colors that are evenly spaced from another and form a triangle on the color wheel.



4288973447



4286813318



4287009186

Complementary

The Complementary color scheme is a pair of colors which are on the opposite of each other on the color wheel.



4288973447



4287078820

Split Complementary

Split-complementary colors differ from the complementary color scheme. The scheme consists of three colors, the original color and two neighbors of the complement color.



4286354336



4288973447



4286289295

Square

The Square scheme is like the rectangle color scheme, but the four colors are evenly spaced on the color wheel.



4288973447



4287468159



4286092697



4287794848

Rectangle

The Rectangle color scheme consists of four colors that form a rectangle on the color wheel.



4288973447



4288384638



4286092697



4286747298

Sweetspot

The Sweet Spot groups the original color and five complimentary colors.



4288973447



4292267467



4288972705



4285228389



4293651435



4285229931

Same Dimension

The Same Dimension uses a secret algorithm to generate beautiful new colors.



4288973447



4292259497



4288977031



4283583049



4287696640



4279370240

Inverse Universe

The Inverse Universe completely reimagines the original color for something new.



4287078820



4289319638



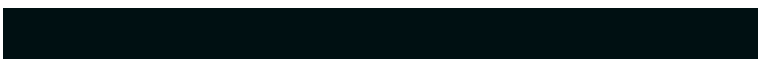
4287075236



4282995026



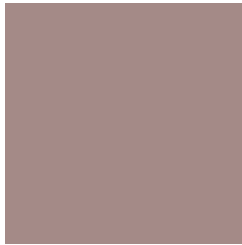
4278223505



4278194194

Previews

White Background



This preview shows how the Android color 4288973447 looks on a white background.

Color Contrast Check

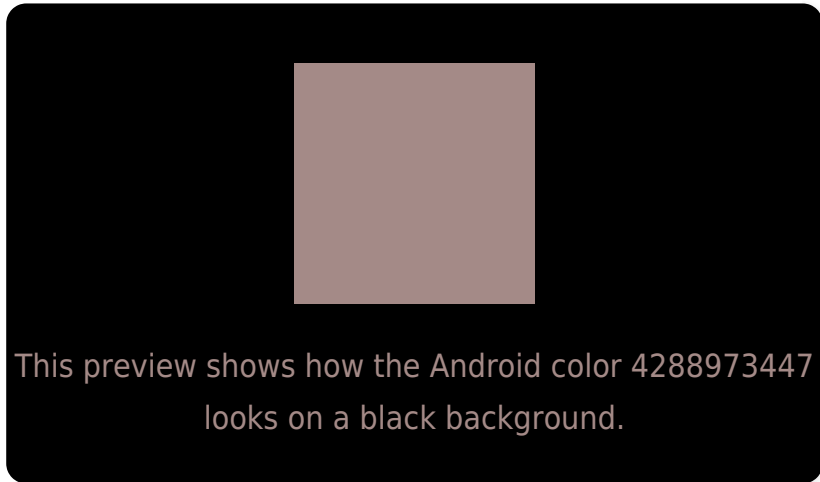
Large Text (above 18pt) WCAG AA ✓ Pass

Any Text WCAG AA ✗ Fail

Large Text (above 18pt) WCAG AAA ✗ Fail

Any Text WCAG AAA ✗ Fail

Black Background



Color Contrast Check

Large Text (above 18pt) WCAG AA ✓ Pass

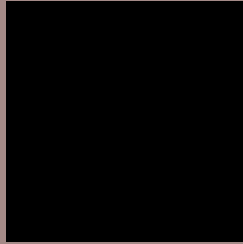
Any Text WCAG AA ✓ Pass

Large Text (above 18pt) WCAG AAA ✓ Pass

Any Text WCAG AAA × Fail

If you want to check with other color combinations, try the [Color Contrast Checker](#).

Android 4288973447 Background



This preview shows how black text looks on a background with the Android color 4288973447.



This preview shows how white text looks on a background with the Android color 4288973447.

Color Blindness Simulation

Color vision deficiency is a very complex topic, and I could not describe the different causes any better than Wikipedia does, so if you want to learn more, you should check out their [article about color blindness](#).

Dichromacy



Original Color

4288973447

Protanopia

4287926154

Deuteranopia

4288777095



Tritanopia
4289038483

Trichromacy



Original Color
4288973447

Protanomaly
4288318857

Deuteranomaly
4288842631

Tritanomaly
4289038735

Monochromacy



Original Color
4288973447

Achromatopsia
4287730065

Achromatomaly
4288188045

CSS Examples

Text

The CSS property to change the color of the text to Android 4288973447 is called "color". The color property can be set on classes, ids or directly on the HTML element.

This example shows how text in the color `rgb(164, 138, 135)` looks like.

```
.text, #text, p{  
    color:rgb(164, 138, 135)  
}
```

If you want to add a text shadow in that color use the text-shadow property, you can generate a text shadow directly with our [CSS Text Shadow Generator](#).

Here you see how black text with a 4 pixel rgb(164, 138, 135) colored shadow looks like.

```
.shadow{ text-shadow: 4px 4px 2px rgb(164, 138, 135) }
```

Border

The CSS property to change the border of an element to Android 4288973447 is called "border". The border property can be set on classes, ids or directly on the HTML element.

This example shows the color as border, it can be applied via the CSS property "border" or "border-color".

```
.border, #border, table{ border:4px solid rgb(164, 138, 135) }
```

If only the border color should be changed use the property `border-color`.

```
.border{ border-color:rgb(164, 138, 135) }
```

If you want to add a box shadow in that color use:

Here you see how a box with a 4 pixel `rgb(164, 138, 135)` colored shadow looks like.

```
.boxshadow{ -moz-box-shadow:4px 4px 4px  
4px rgb(164, 138, 135); -webkit-box-  
shadow:4px 4px 4px 4px rgb(164, 138, 135);  
box-shadow:4px 4px 4px 4px rgb(164, 138,  
135) }
```

Background

The CSS property to change the background color of an element to Android 4288973447 is called "background". The background property can be set on classes, ids or directly on the HTML element.

```
.background, #background, body{  
background: rgb(164, 138, 135) }
```

If only the background color should be changed can be used:

```
.background{ background-color: rgb(164,  
138, 135) }
```

This example shows the color as background, it is applied via the CSS property "background".

To optimize and compress your CSS code, you can use our [online CSS compressor and optimizer](#) based on csstidy. If you want to create a linear or radial gradient as background or border, check our [CSS Gradient Generator](#).

Hey! You found this booklet interesting? Support Converting Colors with the new Membership Option!

The pro membership hides all ads, plus gives you double the colors in the color bucket, and more awesome pro features!

[Learn more, Memberships starting at \\$2.50/m!](#)

**Follow me
on Twitter!**

@ConvertingColor