

Converting Colors

Android(4288973937)

Have a look what the booklet for
Android(4288973937) contains.

| | |
|--|----|
| Android(4288973937) | 3 |
| <i>Conversions</i> | 4 |
| <i>Details</i> | 6 |
| <i>Harmonies</i> | 11 |
| <i>Previews</i> | 23 |
| <i>Color Blindness Simulation</i> | 26 |
| <i>CSS Examples</i> | 29 |

Color

Android(4288973937)

Conversions

Conversions Part 1

| Format | Color |
|---------------|----------------------------|
| Hex | A48C71 |
| RGB | 164, 140, 113 |
| RGB Percent | 64%, 55%, 44% |
| CMY | 0.3569, 0.4510, 0.5569 |
| CMYK | 0.00, 0.15, 0.31, 0.36 |
| HSL | 32°, 22%, 54% |
| HSV | 32°, 31%, 64% |
| XYZ | 27.6686, 27.8409, 19.5383 |
| YIQ | 144.0980, 22.9710, -3.3090 |

Conversions

Conversions Part 2

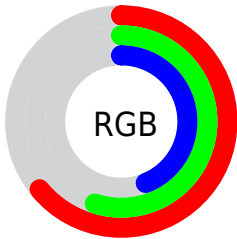
| Format | Color |
|-------------------------------------|--------------------------------|
| R_{YB} | 158, 164, 113 |
| Decimal | 10783857 |
| CIE Lab | 59.74, 4.89, 17.79 |
| CIE LCh | 60, 18.446, 74.632 |
| Yxy | 27.8409, 0.3687, 0.3710 |
| Android (android.graphics.Color) | 4288973937 (0xFFA48C71) |
| YUV | 144.0980, -15.3313, 17.4541 |
| Hunter-Lab | 52.7645, 1.2636, 14.9805 |

Details

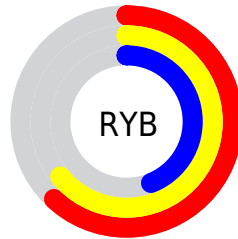
The Android color `4288973937` is a dark color, and the websafe version is hex `999966`. A complement of this color would be `4285630884`, and the grayscale version is `4287664272`.

A 20% lighter version of the original color is `4292657573`, and `4285487681` is the 20% darker color. If you saturate the color by 10%, you get `4288971873`, and if you desaturate by 10%, it is `4288976001`.

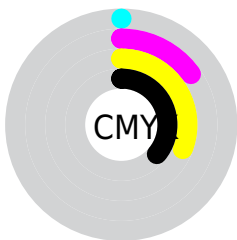
Distribution



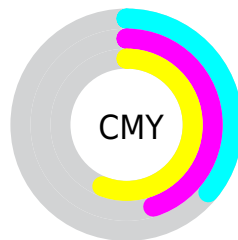
- Red (64%)
- Green (55%)
- Blue (44%)



- Red (62%)
- Yellow (64%)
- Blue (44%)



- Cyan (0%)
- Magenta (15%)
- Yellow (31%)
- Black (36%)



- Cyan (36%)
- Magenta (45%)
- Yellow (56%)

Brightness & Saturation Gradients

These gradients show how the Android color 4288973937 changes by changing the brightness by 10 percent. The first figure shows a shift by +10% for each color and the second figure -10%.

Similar to the brightness gradients but the following saturation gradients show a change of the Android color 4288973937 by changing the saturation by 10% instead.



4288973937



4288973937

4294967295



4287198040



4292657573



4285487681



4294499776



4283843371



4294965980



4282264854



4294967289



4280817664



4278845440



4278190080



4288973937



4288973937



4288971873



4288976001

■ 4288970064

■ 4288977810

■ 4288968000

■ 4288979874

■ 4288965935

■ 4288981939

■ 4288963871

■ 4288984003

■ 4288962063

■ 4288985811

■ 4288960256

■ 4288987876

■ 4288989940

■ 4288991743

Harmonies

Analogous

The Analogous color harmony consists of three colors that are next to each other on the color wheel.



4289693562



4288973937



4287926640

Triad

The Triadic color harmony groups three colors that are evenly spaced from another and form a triangle on the color wheel.



4288973937



4284782999



4288448935

Complementary

The Complementary color scheme is a pair of colors which are on the opposite of each other on the color wheel.



4288973937



4285630884

Split Complementary

Split-complementary colors differ from the complementary color scheme. The scheme consists of three colors, the original color and two neighbors of the complement color.



4287139759



4288973937



4284848294

Square

The Square scheme is like the rectangle color scheme, but the four colors are evenly spaced on the color wheel.



4288973937



4285569415



4285764783



4289430937

Rectangle

The Rectangle color scheme consists of four colors that form a rectangle on the color wheel.



4288973937



4287141237



4285764783



4288056235

Sweetspot

The Sweet Spot groups the original color and five complimentary colors.



4288973937



4292267459



4288967050



4285228639



4293651435



4285229931

Same Dimension

The Same Dimension uses a secret algorithm to generate beautiful new colors.



4288973937



4292260231



4288914545



4283584073



4287712512



4279372032

Inverse Universe

The Inverse Universe completely reimagines the original color for something new.



4285630884



4287081686



4285690276



4282994002



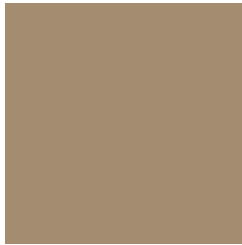
4278207633



4278192146

Previews

White Background



This preview shows how the Android color 4288973937 looks on a white background.

Color Contrast Check

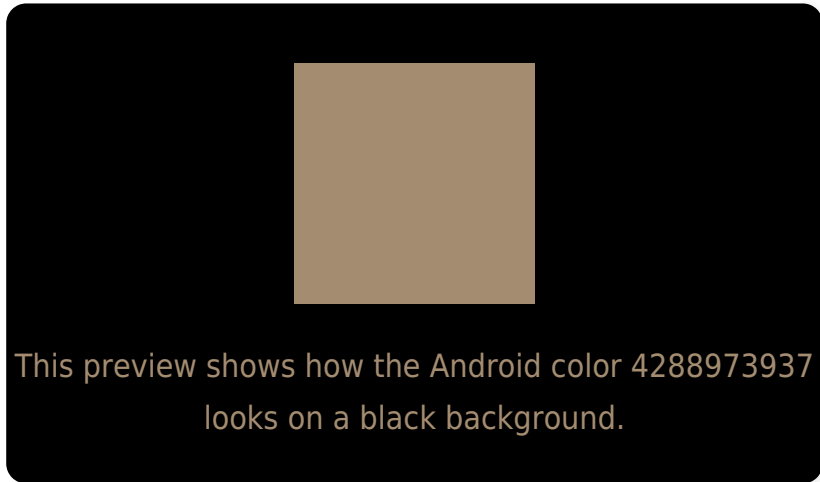
Large Text (above 18pt) WCAG AA ✓ Pass

Any Text WCAG AA ✗ Fail

Large Text (above 18pt) WCAG AAA ✗ Fail

Any Text WCAG AAA ✗ Fail

Black Background



Color Contrast Check

Large Text (above 18pt) WCAG AA ✓ Pass

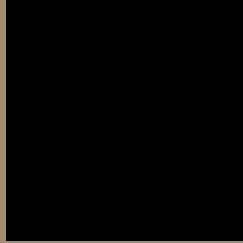
Any Text WCAG AA ✓ Pass

Large Text (above 18pt) WCAG AAA ✓ Pass

Any Text WCAG AAA × Fail

If you want to check with other color combinations, try the [Color Contrast Checker](#).

Android 4288973937 Background



This preview shows how black text looks on a background with the Android color 4288973937.



This preview shows how white text looks on a background with the Android color 4288973937.

Color Blindness Simulation

Color vision deficiency is a very complex topic, and I could not describe the different causes any better than Wikipedia does, so if you want to learn more, you should check out their [article about color blindness](#).

Dichromacy



Original Color


4288973937

Protanopia

4288254067

Deuteranopia

4289235569



Tritanopia
4289234834

Trichromacy



Original Color

4288973937

Protanomaly

4288515954

Deuteranomaly

4289170289

Tritanomaly

4289169798

Monochromacy



Original Color

4288973937

Achromatopsia

4287664272

Achromatomaly

4288122757

CSS Examples

Text

The CSS property to change the color of the text to Android 4288973937 is called "color". The color property can be set on classes, ids or directly on the HTML element.

This example shows how text in the color `rgb(164, 140, 113)` looks like.

```
.text, #text, p{  
    color:rgb(164, 140, 113)  
}
```

If you want to add a text shadow in that color use the text-shadow property, you can generate a text shadow directly with our [CSS Text Shadow Generator](#).

Here you see how black text with a 4 pixel rgb(164, 140, 113) colored shadow looks like.

```
.shadow{ text-shadow: 4px 4px 2px rgb(164, 140, 113) }
```

Border

The CSS property to change the border of an element to Android 4288973937 is called "border". The border property can be set on classes, ids or directly on the HTML element.

This example shows the color as border, it can be applied via the CSS property "border" or "border-color".

```
.border, #border, table{ border:4px solid rgb(164, 140, 113) }
```

If only the border color should be changed use the property `border-color`.

```
.border{ border-color:rgb(164, 140, 113) }
```

If you want to add a box shadow in that color use:

Here you see how a box with a 4 pixel `rgb(164, 140, 113)` colored shadow looks like.

```
.boxshadow{ -moz-box-shadow:4px 4px 4px  
4px rgb(164, 140, 113); -webkit-box-  
shadow:4px 4px 4px 4px rgb(164, 140, 113);  
box-shadow:4px 4px 4px 4px rgb(164, 140,  
113) }
```

Background

The CSS property to change the background color of an element to Android 4288973937 is called "background". The background property can be set on classes, ids or directly on the HTML element.

```
.background, #background, body{  
background: rgb(164, 140, 113) }
```

If only the background color should be changed can be used:

```
.background{ background-color: rgb(164,  
140, 113) }
```

This example shows the color as background, it is applied via the CSS property "background".

To optimize and compress your CSS code, you can use our [online CSS compressor and optimizer](#) based on csstidy. If you want to create a linear or radial gradient as background or border, check our [CSS Gradient Generator](#).

Hey! You found this booklet interesting? Support Converting Colors with the new Membership Option!

The pro membership hides all ads, plus gives you double the colors in the color bucket, and more awesome pro features!

[Learn more, Memberships starting at \\$2.50/m!](#)

**Follow me
on Twitter!**

@ConvertingColor