

# Converting Colors

Android(4289037936)

Have a look what the booklet for  
Android(4289037936) contains.

|  |    |
|--|----|
| <b>Android(4289037936)</b> .....               | 3  |
| <b><i>Conversions</i></b> .....                | 4  |
| <b><i>Details</i></b> .....                    | 6  |
| <b><i>Harmonies</i></b> .....                  | 11 |
| <b><i>Previews</i></b> .....                   | 23 |
| <b><i>Color Blindness Simulation</i></b> ..... | 26 |
| <b><i>CSS Examples</i></b> .....               | 29 |

# Color

**Android(4289037936)**

# Conversions

## Conversions Part 1

| <b>Format</b> | <b>Color</b>               |
|---------------|----------------------------|
| Hex           | A58670                     |
| RGB           | 165, 134, 112              |
| RGB Percent   | 65%, 53%, 44%              |
| CMY           | 0.3529, 0.4745, 0.5608     |
| CMYK          | 0.00, 0.19, 0.32, 0.35     |
| HSL           | 25°, 23%, 54%              |
| HSV           | 25°, 32%, 65%              |
| XYZ           | 26.9668, 26.2194, 18.9688  |
| YIQ           | 140.7610, 25.5380, -0.2700 |

# Conversions

## Conversions Part 2

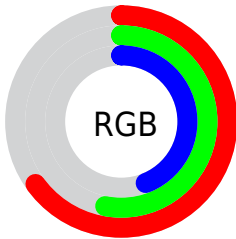
| <b>Format</b>                       | <b>Color</b>                   |
|-------------------------------------|--------------------------------|
| <b>R<sub>YB</sub></b>               | 165, 150, 112                  |
| Decimal                             | 10847856                       |
| CIE Lab                             | 58.24, 8.53, 16.31             |
| CIE LCh                             | 58, 18.403, 62.390             |
| Yxy                                 | 26.2194, 0.3737,<br>0.3634     |
| Android<br>(android.graphics.Color) | 4289037936<br>(0xFFA58670)     |
| YUV                                 | 140.7610, -14.1792,<br>21.2576 |
| Hunter-Lab                          | 51.2049, 4.3976,<br>13.8795    |

# Details

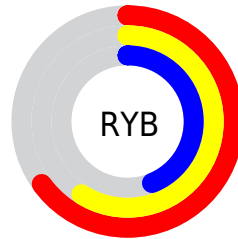
The Android color `4289037936` is a dark color, and the websafe version is hex `CC9999`. A complement of this color would be `4285566885`, and the grayscale version is `4287466893`.

A 20% lighter version of the original color is `4292721572`, and `4285551680` is the 20% darker color. If you saturate the color by 10%, you get `4289035359`, and if you desaturate by 10%, it is `4289040513`.

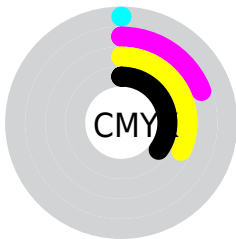
# Distribution



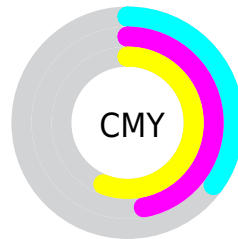
- Red (65%)
- Green (53%)
- Blue (44%)



- Red (65%)
- Yellow (59%)
- Blue (44%)



- Cyan (0%)
- Magenta (19%)
- Yellow (32%)
- Black (35%)



- Cyan (35%)
- Magenta (47%)
- Yellow (56%)

# Brightness & Saturation Gradients

These gradients show how the Android color 4289037936 changes by changing the brightness by 10 percent. The first figure shows a shift by +10% for each color and the second figure -10%.

Similar to the brightness gradients but the following saturation gradients show a change of the Android color 4289037936 by changing the saturation by 10% instead.





4289037936



4289037936

4294967295



4287262040



4292721572



4285551680



4294629311



4283907370



4294964187



4282328853



4294967287



4280816384



4278386688



4278190080



4289037936



4289037936



4289035359



4289040513

 4289033039

 4289042833

 4289030462

 4289045409

 4289027886

 4289047986

 4289025565

 4289050306

 4289022989

 4289052883

 4289020928

 4289055459

 4289057780

 4289060351

# Harmonies

## Analogous

The Analogous color harmony consists of three colors that are next to each other on the color wheel.



4289561211



4289037936



4288121708

# Triad

The Triadic color harmony groups three colors that are evenly spaced from another and form a triangle on the color wheel.



4289037936



4284781965



4287661991

# Complementary

The Complementary color scheme is a pair of colors which are on the opposite of each other on the color wheel.



4289037936



4285566885

# Split Complementary

Split-complementary colors differ from the complementary color scheme. The scheme consists of three colors, the original color and two neighbors of the complement color.



4286287276



4289037936



4284454301

# Square

The Square scheme is like the rectangle color scheme, but the four colors are evenly spaced on the color wheel.



4289037936



4285764733



4285043368



4288840603

# Rectangle

The Rectangle color scheme consists of four colors that form a rectangle on the color wheel.



4289037936



4287336302



4285043368



4287203754



# Sweetspot

The Sweet Spot groups the original color and five complimentary colors.



4289037936



4292266689



4289032336



4285228126



4293651435



4285229931



# Same Dimension

The Same Dimension uses a secret algorithm to generate beautiful new colors.



4289037936



4292257155



4289044592



4283583817



4287708160



4279371520



# Inverse Universe

The Inverse Universe completely reimagines the original color for something new.



4285566885



4286821590



4285560229



4282994258



4278211985

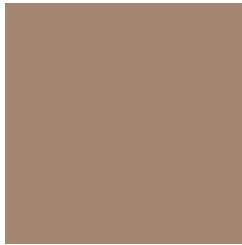


4278192658



# Previews

## White Background



This preview shows how the Android color 4289037936 looks on a white background.

## Color Contrast Check

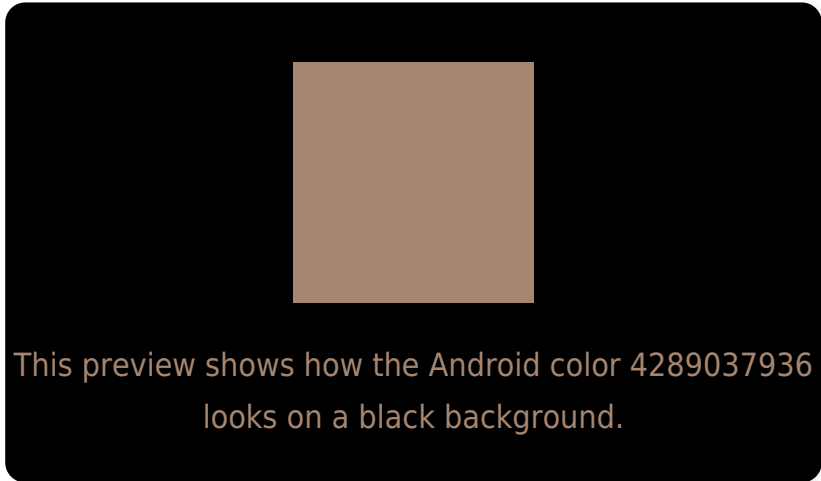
Large Text (above 18pt) WCAG AA ✓ Pass

Any Text WCAG AA ✗ Fail

Large Text (above 18pt) WCAG AAA ✗ Fail

Any Text WCAG AAA ✗ Fail

# Black Background



## Color Contrast Check

Large Text (above 18pt) WCAG AA ✓ Pass

Any Text WCAG AA ✓ Pass

Large Text (above 18pt) WCAG AAA ✓ Pass

Any Text WCAG AAA × Fail

If you want to check with other color combinations, try the [Color Contrast Checker](#).



# Android 4289037936 Background



This preview shows how black text looks on a background with the Android color 4289037936.



This preview shows how white text looks on a background with the Android color 4289037936.

# Color Blindness Simulation

Color vision deficiency is a very complex topic, and I could not describe the different causes any better than Wikipedia does, so if you want to learn more, you should check out their [article about color blindness](#).

## Dichromacy



**Original Color**  
4289037936

**Protanopia**  
4287925363

**Deuteranopia**  
4288907120



# Trichromacy



**Original Color**  
4289037936

**Protanomaly**  
4288318066

**Deuteranomaly**  
4288972656

**Tritanomaly**  
4289168258

# Monochromacy



**Original Color**  
4289037936

**Achromatopsia**  
4287466893

**Achromatomaly**  
4288055938

# CSS Examples

## Text

The CSS property to change the color of the text to Android 4289037936 is called "color". The color property can be set on classes, ids or directly on the HTML element.

This example shows how text in the color `rgb(165, 134, 112)` looks like.

```
.text, #text, p{  
    color:rgb(165, 134, 112)  
}
```

If you want to add a text shadow in that color use the text-shadow property, you can generate a text shadow directly with our [CSS Text Shadow Generator](#).

Here you see how black text with a 4 pixel rgb(165, 134, 112) colored shadow looks like.

```
.shadow{ text-shadow: 4px 4px 2px rgb(165, 134, 112) }
```

## Border

The CSS property to change the border of an element to Android 4289037936 is called "border". The border property can be set on classes, ids or directly on the HTML element.

This example shows the color as border, it can be applied via the CSS property "border" or "border-color".

```
.border, #border, table{ border:4px solid rgb(165, 134, 112) }
```

If only the border color should be changed use the property `border-color`.

```
.border{ border-color:rgb(165, 134, 112) }
```

If you want to add a box shadow in that color use:

Here you see how a box with a 4 pixel `rgb(165, 134, 112)` colored shadow looks like.

```
.boxshadow{ -moz-box-shadow:4px 4px 4px  
4px rgb(165, 134, 112); -webkit-box-  
shadow:4px 4px 4px 4px rgb(165, 134, 112);  
box-shadow:4px 4px 4px 4px rgb(165, 134,  
112) }
```

# Background

The CSS property to change the background color of an element to Android 4289037936 is called "background". The background property can be set on classes, ids or directly on the HTML element.

```
.background, #background, body{  
background: rgb(165, 134, 112) }
```

If only the background color should be changed can be used:

```
.background{ background-color: rgb(165,  
134, 112) }
```

This example shows the color as background, it is applied via the CSS property "background".

To optimize and compress your CSS code, you can use our [online CSS compressor and optimizer](#) based on csstidy. If you want to create a linear or radial gradient as background or border, check our [CSS Gradient Generator](#).



Hey! You found this booklet interesting? Support Converting Colors with the new Membership Option!

The pro membership hides all ads, plus gives you double the colors in the color bucket, and more awesome pro features!

**[Learn more, Memberships starting at \\$2.50/m!](#)**

**Follow me  
on Twitter!**

@ConvertingColor