

# Converting Colors

Android(4289039483)

Have a look what the booklet for  
Android(4289039483) contains.

<b>Android(4289039483)</b> .....	3
<b><i>Conversions</i></b> .....	4
<b><i>Details</i></b> .....	6
<b><i>Harmonies</i></b> .....	11
<b><i>Previews</i></b> .....	23
<b><i>Color Blindness Simulation</i></b> .....	26
<b><i>CSS Examples</i></b> .....	29

# Color

**Android(4289039483)**

# Conversions

## Conversions Part 1

<b>Format</b>	<b>Color</b>
Hex	A58C7B
RGB	165, 140, 123
RGB Percent	65%, 55%, 48%
CMY	0.3529, 0.4510, 0.5176
CMYK	0.00, 0.15, 0.25, 0.35
HSL	24°, 19%, 56%
HSV	24°, 25%, 65%
XYZ	28.4703, 28.1856, 22.6787
YIQ	145.5370, 20.3570, 0.0130

# Conversions

## Conversions Part 2

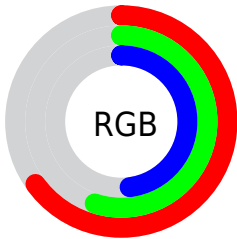
<b>Format</b>	<b>Color</b>
<b>R<sub>YB</sub></b>	165, 152, 123
Decimal	10849403
CIE <sub>Lab</sub>	60.06, 6.72, 12.58
CIE <sub>LCh</sub>	60, 14.259, 61.894
Yxy	28.1856, 0.3589, 0.3553
Android (android.graphics.Color)	4289039483 (0xFFA58C7B)
YUV	145.5370, -11.1107, 17.0691
Hunter-Lab	53.0901, 2.8155, 11.8359

# Details

The Android color `4289039483` is a dark color, and the websafe version is hex `999999`. A complement of this color would be `4286289061`, and the grayscale version is `4287795858`.

A 20% lighter version of the original color is `4292657839`, and `4285618762` is the 20% darker color. If you saturate the color by 10%, you get `4289036906`, and if you desaturate by 10%, it is `4289042059`.

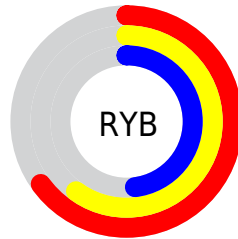
# Distribution



Red (65%)

Green (55%)

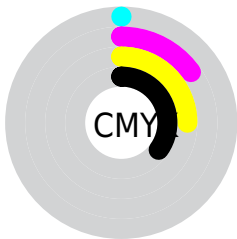
Blue (48%)



Red (65%)

Yellow (60%)

Blue (48%)

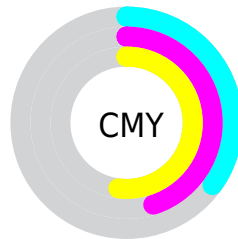


Cyan (0%)

Magenta (15%)

Yellow (25%)

Black (35%)



Cyan (35%)

Magenta (45%)

Yellow (52%)

# Brightness & Saturation Gradients

These gradients show how the Android color 4289039483 changes by changing the brightness by 10 percent. The first figure shows a shift by +10% for each color and the second figure -10%.

Similar to the brightness gradients but the following saturation gradients show a change of the Android color 4289039483 by changing the saturation by 10% instead.





4289039483



4289039483

4294967295



4287263586



4292657839



4285618762



4294565323



4283974452



4294965991



4282395678



4280883206



4279304192



4278190080



4289039483



4289039483



4289036906



4289042059

 4289034330

 4289044636

 4289032010

 4289046956

 4289029433

 4289049533

 4289026857

 4289052109

 4289024280

 4289054686

 4289021703

 4289057262

 4289020672

 4289059839

 4289062143

# Harmonies

## Analogous

The Analogous color harmony consists of three colors that are next to each other on the color wheel.



4289431940



4289039483



4288319608

# Triad

The Triadic color harmony groups three colors that are evenly spaced from another and form a triangle on the color wheel.



4289039483



4285765777



4287925670

# Complementary

The Complementary color scheme is a pair of colors which are on the opposite of each other on the color wheel.



4289039483



4286289061

# Split Complementary

Split-complementary colors differ from the complementary color scheme. The scheme consists of three colors, the original color and two neighbors of the complement color.



4286878378



4289039483



4285569181

# Square

The Square scheme is like the rectangle color scheme, but the four colors are evenly spaced on the color wheel.



4289039483



4286486405



4285961638



4288842397

# Rectangle

The Rectangle color scheme consists of four colors that form a rectangle on the color wheel.



4289039483



4287730553



4285961638



4287598504



# Sweetspot

The Sweet Spot groups the original color and five complimentary colors.



4289039483



4292267205



4289035156



4285228384



4293651435



4285229931



# Same Dimension

The Same Dimension uses a secret algorithm to generate beautiful new colors.



4289039483



4292259732



4289044859



4283583817



4287707904



4279371520



# Inverse Universe

The Inverse Universe completely reimagines the original color for something new.



4286289061



4287937494



4286283685



4282994258



4278212497

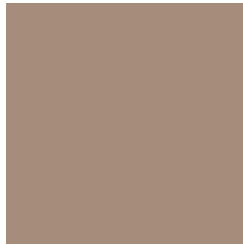


4278192914



# Previews

## White Background



This preview shows how the Android color 4289039483 looks on a white background.

## Color Contrast Check

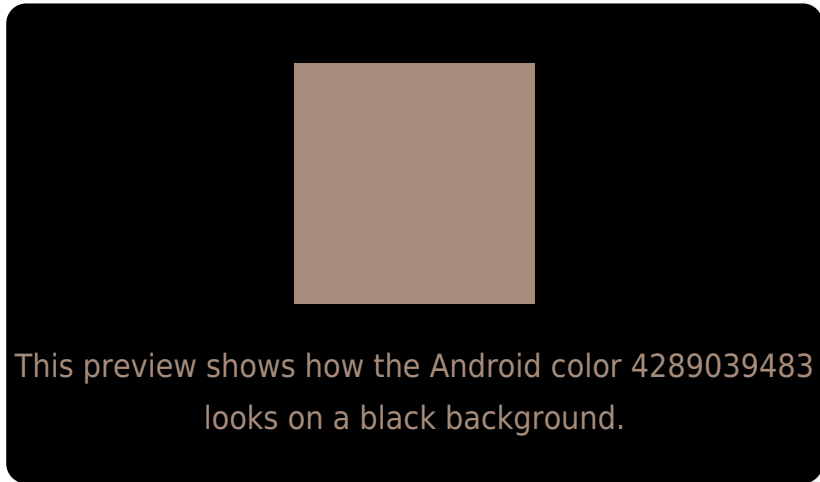
Large Text (above 18pt) WCAG AA ✓ Pass

Any Text WCAG AA ✗ Fail

Large Text (above 18pt) WCAG AAA ✗ Fail

Any Text WCAG AAA ✗ Fail

# Black Background



## Color Contrast Check

Large Text (above 18pt) WCAG AA ✓ Pass

Any Text WCAG AA ✓ Pass

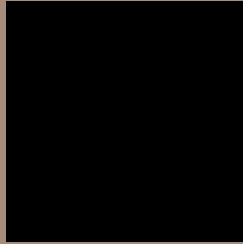
Large Text (above 18pt) WCAG AAA ✓ Pass

Any Text WCAG AAA × Fail

If you want to check with other color combinations, try the [Color Contrast Checker](#).



# Android 4289039483 Background



This preview shows how black text looks on a background with the Android color 4289039483.



This preview shows how white text looks on a background with the Android color 4289039483.

# Color Blindness Simulation

Color vision deficiency is a very complex topic, and I could not describe the different causes any better than Wikipedia does, so if you want to learn more, you should check out their [article about color blindness](#).

## Dichromacy



**Original Color**


4289039483

**Protanopia**

4288188541

**Deuteranopia**

4289170299



**Tritanopia**  
4289235347

# Trichromacy



**Original Color**  
4289039483

**Protanomaly**  
4288515964

**Deuteranomaly**  
4289104763

**Tritanomaly**  
4289170058

# Monochromacy



**Original Color**  
4289039483

**Achromatopsia**  
4287795858

**Achromatomaly**  
4288254090

# CSS Examples

## Text

The CSS property to change the color of the text to Android 4289039483 is called "color". The color property can be set on classes, ids or directly on the HTML element.

This example shows how text in the color `rgb(165, 140, 123)` looks like.

```
.text, #text, p{  
    color:rgb(165, 140, 123)  
}
```

If you want to add a text shadow in that color use the text-shadow property, you can generate a text shadow directly with our [CSS Text Shadow Generator](#).

Here you see how black text with a 4 pixel rgb(165, 140, 123) colored shadow looks like.

```
.shadow{ text-shadow: 4px 4px 2px rgb(165, 140, 123) }
```

## Border

The CSS property to change the border of an element to Android 4289039483 is called "border". The border property can be set on classes, ids or directly on the HTML element.

This example shows the color as border, it can be applied via the CSS property "border" or "border-color".

```
.border, #border, table{ border:4px solid rgb(165, 140, 123) }
```

If only the border color should be changed use the property `border-color`.

```
.border{ border-color:rgb(165, 140, 123) }
```

If you want to add a box shadow in that color use:

Here you see how a box with a 4 pixel `rgb(165, 140, 123)` colored shadow looks like.

```
.boxshadow{ -moz-box-shadow:4px 4px 4px  
4px rgb(165, 140, 123); -webkit-box-  
shadow:4px 4px 4px 4px rgb(165, 140, 123);  
box-shadow:4px 4px 4px 4px rgb(165, 140,  
123) }
```

# Background

The CSS property to change the background color of an element to Android 4289039483 is called "background". The background property can be set on classes, ids or directly on the HTML element.

```
.background, #background, body{  
background: rgb(165, 140, 123) }
```

If only the background color should be changed can be used:

```
.background{ background-color: rgb(165,  
140, 123) }
```

This example shows the color as background, it is applied via the CSS property "background".

To optimize and compress your CSS code, you can use our [online CSS compressor and optimizer](#) based on csstidy. If you want to create a linear or radial gradient as background or border, check our [CSS Gradient Generator](#).



Hey! You found this booklet interesting? Support Converting Colors with the new Membership Option!

The pro membership hides all ads, plus gives you double the colors in the color bucket, and more awesome pro features!

**[Learn more, Memberships starting at \\$2.50/m!](#)**

**Follow me  
on Twitter!**

@ConvertingColor