

Converting Colors

Android(4289103474)

Have a look what the booklet for
Android(4289103474) contains.

Android(4289103474)	3
<i>Conversions</i>	4
<i>Details</i>	6
<i>Harmonies</i>	11
<i>Previews</i>	23
<i>Color Blindness Simulation</i>	26
<i>CSS Examples</i>	29

Color

Android(4289103474)

Conversions

Conversions Part 1

Format	Color
Hex	A68672
RGB	166, 134, 114
RGB Percent	65%, 53%, 45%
CMY	0.3490, 0.4745, 0.5529
CMYK	0.00, 0.19, 0.31, 0.35
HSL	23°, 23%, 55%
HSV	23°, 31%, 65%
XYZ	27.2882, 26.3721, 19.5717
YIQ	141.2880, 25.4920, 0.5640

Conversions

Conversions Part 2

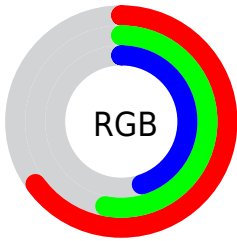
Format	Color
R_{YB}	166, 147, 114
Decimal	10913394
CIE _{Lab}	58.39, 9.21, 15.38
CIE _{LCh}	58, 17.930, 59.095
Yxy	26.3721, 0.3726, 0.3601
Android (android.graphics.Color)	4289103474 (0xFFFA68672)
YUV	141.2880, -13.4530, 21.6724
Hunter-Lab	51.3538, 4.9818, 13.3514

Details

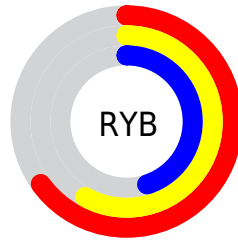
The Android color `4289103474` is a dark color, and the websafe version is hex `CC9999`. A complement of this color would be `4285698726`, and the grayscale version is `4287466893`.

A 20% lighter version of the original color is `4292787110`, and `4285617218` is the 20% darker color. If you saturate the color by 10%, you get `4289100897`, and if you desaturate by 10%, it is `4289106051`.

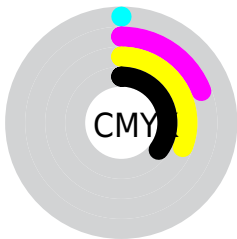
Distribution



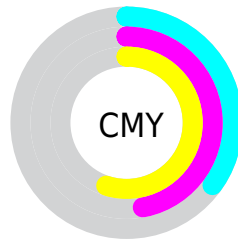
- Red (65%)
- Green (53%)
- Blue (45%)



- Red (65%)
- Yellow (58%)
- Blue (45%)



- Cyan (0%)
- Magenta (19%)
- Yellow (31%)
- Black (35%)



- Cyan (35%)
- Magenta (47%)
- Yellow (55%)

Brightness & Saturation Gradients

These gradients show how the Android color 4289103474 changes by changing the brightness by 10 percent. The first figure shows a shift by +10% for each color and the second figure -10%.

Similar to the brightness gradients but the following saturation gradients show a change of the Android color 4289103474 by changing the saturation by 10% instead.

 4289103474

 4289103474

4294967295

 4287327577

 4292787110

 4285617218

 4294694849

 4283972908

 4294964189

 4282328855

 4294967290

 4280881920

 4278583296

 4278190080

 4289103474

 4289103474

 4289100897

 4289106051

4289098321

4289108627

4289095488

4289111460

4289092912

4289114036

4289090335

4289116613

4289087758

4289119190

4289085440

4289122022

4289124599

4289127167

Harmonies

Analogous

The Analogous color harmony consists of three colors that are next to each other on the color wheel.



4289561214



4289103474



4288252781

Triad

The Triadic color harmony groups three colors that are evenly spaced from another and form a triangle on the color wheel.



4289103474



4284978571



4287596968

Complementary

The Complementary color scheme is a pair of colors which are on the opposite of each other on the color wheel.



4289103474



4285698726

Split Complementary

Split-complementary colors differ from the complementary color scheme. The scheme consists of three colors, the original color and two neighbors of the complement color.



4286156459



4289103474



4284585371

Square

The Square scheme is like the rectangle color scheme, but the four colors are evenly spaced on the color wheel.



4289103474



4285961340



4285043367



4288709789

Rectangle

The Rectangle color scheme consists of four colors that form a rectangle on the color wheel.



4289103474



4287532911



4285043367



4287138474

Sweetspot

The Sweet Spot groups the original color and five complimentary colors.



4289103474



4292464069



4289098386



4285425250



4293783021



4285427310

Same Dimension

The Same Dimension uses a secret algorithm to generate beautiful new colors.



4289103474



4292454022



4289110130



4283715404



4287904000



4279502848

Inverse Universe

The Inverse Universe completely reimagines the original color for something new.



4285698726



4287019481



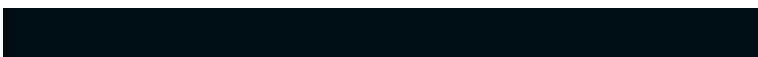
4285692070



4283191636



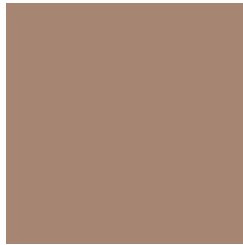
4278213524



4278193428

Previews

White Background



This preview shows how the Android color 4289103474 looks on a white background.

Color Contrast Check

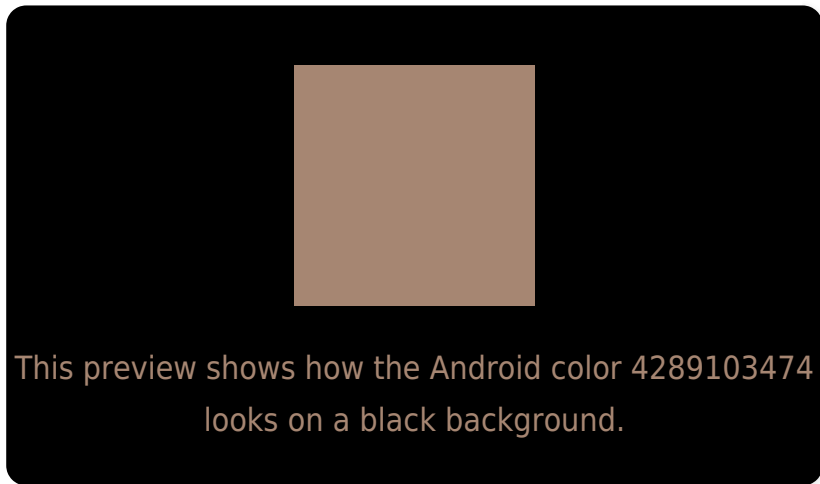
Large Text (above 18pt) WCAG AA ✓ Pass

Any Text WCAG AA ✗ Fail

Large Text (above 18pt) WCAG AAA ✗ Fail

Any Text WCAG AAA ✗ Fail

Black Background



Color Contrast Check

Large Text (above 18pt) WCAG AA ✓ Pass

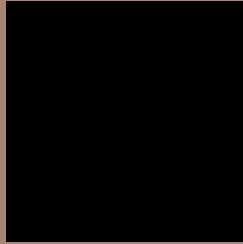
Any Text WCAG AA ✓ Pass

Large Text (above 18pt) WCAG AAA ✓ Pass

Any Text WCAG AAA × Fail

If you want to check with other color combinations, try the [Color Contrast Checker](#).

Android 4289103474 Background



This preview shows how black text looks on a background with the Android color 4289103474.



This preview shows how white text looks on a background with the Android color 4289103474.

Color Blindness Simulation

Color vision deficiency is a very complex topic, and I could not describe the different causes any better than Wikipedia does, so if you want to learn more, you should check out their [article about color blindness](#).

Dichromacy



Original Color


4289103474

Protanopia

4287925365

Deuteranopia

4288907122



Tritanopia
4289299084

Trichromacy



Original Color

4289103474

Protanomaly

4288383604

Deuteranomaly

4288972658

Tritanomaly

4289233795

Monochromacy



Original Color

4289103474

Achromatopsia

4287466893

Achromatomaly

4288055939

CSS Examples

Text

The CSS property to change the color of the text to Android 4289103474 is called "color". The color property can be set on classes, ids or directly on the HTML element.

This example shows how text in the color `rgb(166, 134, 114)` looks like.

```
.text, #text, p{  
    color:rgb(166, 134, 114)  
}
```

If you want to add a text shadow in that color use the text-shadow property, you can generate a text shadow directly with our [CSS Text Shadow Generator](#).

Here you see how black text with a 4 pixel rgb(166, 134, 114) colored shadow looks like.

```
.shadow{ text-shadow: 4px 4px 2px rgb(166, 134, 114) }
```

Border

The CSS property to change the border of an element to Android 4289103474 is called "border". The border property can be set on classes, ids or directly on the HTML element.

This example shows the color as border, it can be applied via the CSS property "border" or "border-color".

```
.border, #border, table{ border:4px solid rgb(166, 134, 114) }
```

If only the border color should be changed use the property `border-color`.

```
.border{ border-color:rgb(166, 134, 114) }
```

If you want to add a box shadow in that color use:

Here you see how a box with a 4 pixel `rgb(166, 134, 114)` colored shadow looks like.

```
.boxshadow{ -moz-box-shadow:4px 4px 4px  
4px rgb(166, 134, 114); -webkit-box-  
shadow:4px 4px 4px 4px rgb(166, 134, 114);  
box-shadow:4px 4px 4px 4px rgb(166, 134,  
114) }
```

Background

The CSS property to change the background color of an element to Android 4289103474 is called "background". The background property can be set on classes, ids or directly on the HTML element.

```
.background, #background, body{  
background: rgb(166, 134, 114) }
```

If only the background color should be changed can be used:

```
.background{ background-color: rgb(166,  
134, 114) }
```

This example shows the color as background, it is applied via the CSS property "background".

To optimize and compress your CSS code, you can use our [online CSS compressor and optimizer](#) based on csstidy. If you want to create a linear or radial gradient as background or border, check our [CSS Gradient Generator](#).

Hey! You found this booklet interesting? Support Converting Colors with the new Membership Option!

The pro membership hides all ads, plus gives you double the colors in the color bucket, and more awesome pro features!

[Learn more, Memberships starting at \\$2.50/m!](#)

**Follow me
on Twitter!**

@ConvertingColor