

Converting Colors

Android(4289105787)

Have a look what the booklet for
Android(4289105787) contains.

Android(4289105787)	3
<i>Conversions</i>	4
<i>Details</i>	6
<i>Harmonies</i>	11
<i>Previews</i>	23
<i>Color Blindness Simulation</i>	26
<i>CSS Examples</i>	29

Color

Android(4289105787)

Conversions

Conversions Part 1

Format	Color
Hex	A68F7B
RGB	166, 143, 123
RGB Percent	65%, 56%, 48%
CMY	0.3490, 0.4392, 0.5176
CMYK	0.00, 0.14, 0.26, 0.35
HSL	28°, 19%, 57%
HSV	28°, 26%, 65%
XYZ	29.1235, 29.1820, 22.8366
YIQ	147.5970, 20.1280, -1.3440

Conversions

Conversions Part 2

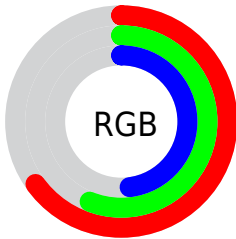
Format	Color
RYB	166, 160, 123
Decimal	10915707
CIELab	60.94, 5.44, 13.83
CIELCh	61, 14.861, 68.535
Yxy	29.1820, 0.3589, 0.3596
Android (android.graphics.Color)	4289105787 (0xFFA68F7B)
YUV	147.5970, -12.1263, 16.1394
Hunter-Lab	54.0203, 1.6975, 12.7499

Details

The Android color `4289105787` is a dark color, and the websafe version is hex `999999`. A complement of this color would be `4286288550`, and the grayscale version is `4287927444`.

A 20% lighter version of the original color is `4292789680`, and `4285619530` is the 20% darker color. If you saturate the color by 10%, you get `4289103466`, and if you desaturate by 10%, it is `4289108108`.

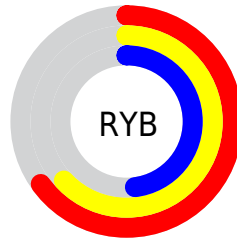
Distribution



Red (65%)

Green (56%)

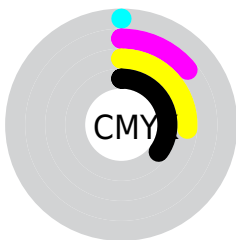
Blue (48%)



Red (65%)

Yellow (63%)

Blue (48%)

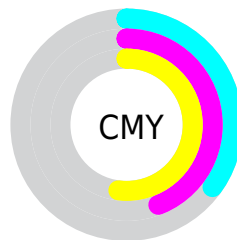


Cyan (0%)

Magenta (14%)

Yellow (26%)

Black (35%)



Cyan (35%)

Magenta (44%)

Yellow (52%)

Brightness & Saturation Gradients

These gradients show how the Android color 4289105787 changes by changing the brightness by 10 percent. The first figure shows a shift by +10% for each color and the second figure -10%.

Similar to the brightness gradients but the following saturation gradients show a change of the Android color 4289105787 by changing the saturation by 10% instead.



4289105787



4289105787

4294967295



4287329634



4292789680



4285619530



4294631883



4283974964



4294966759



4282396446



4280949254



4279369728



4278190080



4289105787



4289105787



4289103466



4289108108

■ 4289101146

■ 4289110428

■ 4289098825

■ 4289112749

■ 4289096505

■ 4289115069

■ 4289094440

■ 4289117134

■ 4289092119

■ 4289119455

■ 4289089799

■ 4289121775

■ 4289088768

■ 4289124095

■ 4289126399

Harmonies

Analogous

The Analogous color harmony consists of three colors that are next to each other on the color wheel.



4289629059



4289105787



4288320377

Triad

The Triadic color harmony groups three colors that are evenly spaced from another and form a triangle on the color wheel.



4289105787



4285701014



4288319144

Complementary

The Complementary color scheme is a pair of colors which are on the opposite of each other on the color wheel.



4289105787



4286288550

Split Complementary

Split-complementary colors differ from the complementary color scheme. The scheme consists of three colors, the original color and two neighbors of the complement color.



4287206317



4289105787



4285635235

Square

The Square scheme is like the rectangle color scheme, but the four colors are evenly spaced on the color wheel.



4289105787



4286356105



4286224299



4289170333

Rectangle

The Rectangle color scheme consists of four colors that form a rectangle on the color wheel.



4289105787



4287665788



4286224299



4287991978

Sweetspot

The Sweet Spot groups the original color and five complimentary colors.



4289105787



4292464583



4289100691



4285425763



4293783021



4285427310

Same Dimension

The Same Dimension uses a secret algorithm to generate beautiful new colors.



4289105787



4292457878



4289111163



4283715660



4287907072



4279503104

Inverse Universe

The Inverse Universe completely reimagines the original color for something new.



4286288550



4288068057



4286283174



4283191380



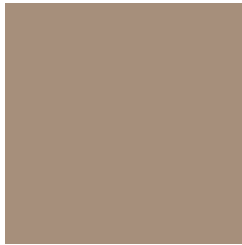
4278210452



4278192916

Previews

White Background



This preview shows how the Android color 4289105787 looks on a white background.

Color Contrast Check

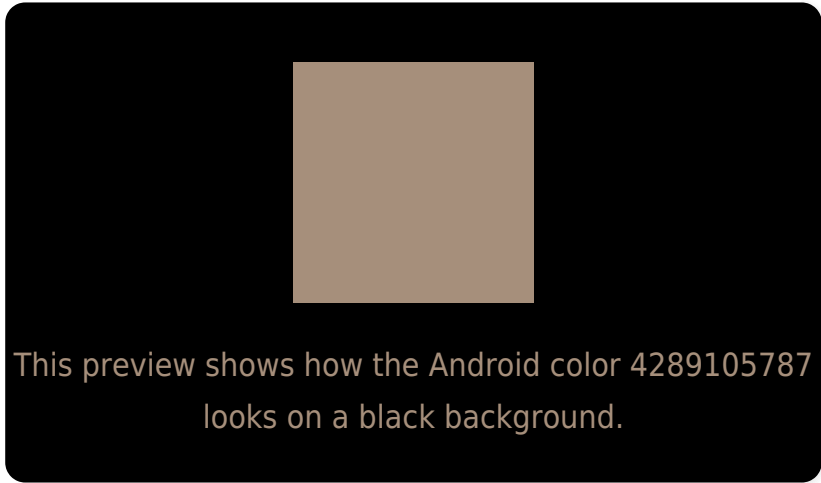
Large Text (above 18pt) WCAG AA ✓ Pass

Any Text WCAG AA ✗ Fail

Large Text (above 18pt) WCAG AAA ✗ Fail

Any Text WCAG AAA ✗ Fail

Black Background



Color Contrast Check

Large Text (above 18pt) WCAG AA ✓ Pass

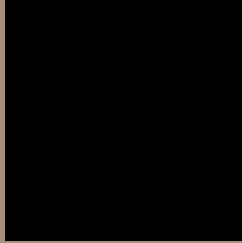
Any Text WCAG AA ✓ Pass

Large Text (above 18pt) WCAG AAA ✓ Pass

Any Text WCAG AAA × Fail

If you want to check with other color combinations, try the [Color Contrast Checker](#).

Android 4289105787 Background



This preview shows how black text looks on a background with the Android color 4289105787.



This preview shows how white text looks on a background with the Android color 4289105787.

Color Blindness Simulation

Color vision deficiency is a very complex topic, and I could not describe the different causes any better than Wikipedia does, so if you want to learn more, you should check out their [article about color blindness](#).

Dichromacy



Original Color


4289105787

Protanopia

4288385917

Deuteranopia

4289367675



Tritanopia
4289301398

Trichromacy



Original Color
4289105787

Protanomaly
4288647804

Deuteranomaly
4289302139

Tritanomaly
4289236108

Monochromacy



Original Color
4289105787

Achromatopsia
4287927444

Achromatomaly
4288385675

CSS Examples

Text

The CSS property to change the color of the text to Android 4289105787 is called "color". The color property can be set on classes, ids or directly on the HTML element.

This example shows how text in the color `rgb(166, 143, 123)` looks like.

```
.text, #text, p{  
    color:rgb(166, 143, 123)  
}
```

If you want to add a text shadow in that color use the text-shadow property, you can generate a text shadow directly with our [CSS Text Shadow Generator](#).

Here you see how black text with a 4 pixel rgb(166, 143, 123) colored shadow looks like.

```
.shadow{ text-shadow: 4px 4px 2px rgb(166, 143, 123) }
```

Border

The CSS property to change the border of an element to Android 4289105787 is called "border". The border property can be set on classes, ids or directly on the HTML element.

This example shows the color as border, it can be applied via the CSS property "border" or "border-color".

```
.border, #border, table{ border:4px solid rgb(166, 143, 123) }
```

If only the border color should be changed use the property `border-color`.

```
.border{ border-color:rgb(166, 143, 123) }
```

If you want to add a box shadow in that color use:

Here you see how a box with a 4 pixel `rgb(166, 143, 123)` colored shadow looks like.

```
.boxshadow{ -moz-box-shadow:4px 4px 4px  
4px rgb(166, 143, 123); -webkit-box-  
shadow:4px 4px 4px 4px rgb(166, 143, 123);  
box-shadow:4px 4px 4px 4px rgb(166, 143,  
123) }
```

Background

The CSS property to change the background color of an element to Android 4289105787 is called "background". The background property can be set on classes, ids or directly on the HTML element.

```
.background, #background, body{  
background: rgb(166, 143, 123) }
```

If only the background color should be changed can be used:

```
.background{ background-color: rgb(166,  
143, 123) }
```

This example shows the color as background, it is applied via the CSS property "background".

To optimize and compress your CSS code, you can use our [online CSS compressor and optimizer](#) based on csstidy. If you want to create a linear or radial gradient as background or border, check our [CSS Gradient Generator](#).

Hey! You found this booklet interesting? Support Converting Colors with the new Membership Option!

The pro membership hides all ads, plus gives you double the colors in the color bucket, and more awesome pro features!

[Learn more, Memberships starting at \\$2.50/m!](#)

**Follow me
on Twitter!**

@ConvertingColor