

# Converting Colors

Android(4289152851)

Have a look what the booklet for  
Android(4289152851) contains.

|  |    |
|--|----|
| <b>Android(4289152851)</b> .....               | 3  |
| <i><b>Conversions</b></i> .....                | 4  |
| <i><b>Details</b></i> .....                    | 6  |
| <i><b>Harmonies</b></i> .....                  | 11 |
| <i><b>Previews</b></i> .....                   | 23 |
| <i><b>Color Blindness Simulation</b></i> ..... | 26 |
| <i><b>CSS Examples</b></i> .....               | 29 |

# Color

**Android(4289152851)**

# Conversions

## Conversions Part 1

| <b>Format</b> | <b>Color</b>               |
|---------------|----------------------------|
| Hex           | A74753                     |
| RGB           | 167, 71, 83                |
| RGB Percent   | 65%, 28%, 33%              |
| CMY           | 0.3451, 0.7216, 0.6745     |
| CMYK          | 0.00, 0.57, 0.50, 0.35     |
| HSL           | 352°, 40%, 47%             |
| HSV           | 352°, 57%, 65%             |
| XYZ           | 19.7509, 13.3465, 9.7188   |
| YIQ           | 101.0720, 53.3640, 24.0840 |

# Conversions

## Conversions Part 2

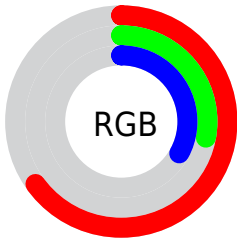
| <b>Format</b>                       | <b>Color</b>                  |
|-------------------------------------|-------------------------------|
| <b>R<sub>YB</sub></b>               | 167, 71, 83                   |
| Decimal                             | 10962771                      |
| CIE <sub>Lab</sub>                  | 43.28, 40.63, 12.83           |
| CIE <sub>LCh</sub>                  | 43, 42.611, 17.519            |
| Yxy                                 | 13.3465, 0.4613,<br>0.3117    |
| Android<br>(android.graphics.Color) | 4289152851<br>(0xFFA74753)    |
| YUV                                 | 101.0720, -8.9095,<br>57.8189 |
| Hunter-Lab                          | 36.5329, 32.5707,<br>9.8002   |

# Details

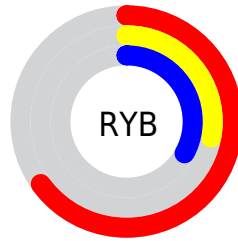
The Android color **4289152851** is a dark color, and the websafe version is hex **993333**. A complement of this color would be **4282886043**, and the grayscale version is **4284835173**.

A 20% lighter version of the original color is **4293032836**, and **4285403430** is the 20% darker color. If you saturate the color by 10%, you get **4289148484**, and if you desaturate by 10%, it is **4289157218**.

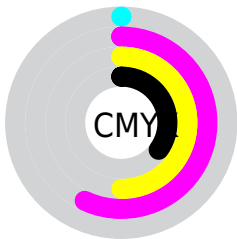
# Distribution



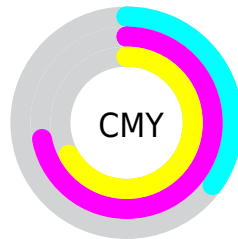
- Red (65%)
- Green (28%)
- Blue (33%)



- Red (65%)
- Yellow (28%)
- Blue (33%)



- Cyan (0%)
- Magenta (57%)
- Yellow (50%)
- Black (35%)



- Cyan (35%)
- Magenta (72%)
- Yellow (67%)

# Brightness & Saturation Gradients

These gradients show how the Android color 4289152851 changes by changing the brightness by 10 percent. The first figure shows a shift by +10% for each color and the second figure -10%.

Similar to the brightness gradients but the following saturation gradients show a change of the Android color 4289152851 by changing the saturation by 10% instead.





4289152851



4289152851

4294967295



4287245628



4293032836



4285403430



4294940318



4283629586



4294947257



4281925632



4294954453



4279762945



4294961905



4278190080



4289152851



4289152851



4289148484



4289157218



4289144374



4289161328

 4289140007

 4289165695

 4289135641

 4289170061

 4289134613

 4289174428

 4289178539

 4289182905

 4289187272

 4289191383

# Harmonies

## Analogous

The Analogous color harmony consists of three colors that are next to each other on the color wheel.



4288628855



4289152851



4288500019

# Triad

The Triadic color harmony groups three colors that are evenly spaced from another and form a triangle on the color wheel.



4289152851



4282151476



4278218411

# Complementary

The Complementary color scheme is a pair of colors which are on the opposite of each other on the color wheel.



4289152851



4282886043

# Split Complementary

Split-complementary colors differ from the complementary color scheme. The scheme consists of three colors, the original color and two neighbors of the complement color.



4278220186



4289152851



4278220374

# Square

The Square scheme is like the rectangle color scheme, but the four colors are evenly spaced on the color wheel.



4289152851



4284836637



4278220666



4283196330

# Rectangle

The Rectangle color scheme consists of four colors that form a rectangle on the color wheel.



4289152851



4287585059



4278220666



4278219175



# Sweetspot

The Sweet Spot groups the original color and five complimentary colors.



4289152851



4292457657



4288300967



4285421658



4293783021



4285427310



# Same Dimension

The Same Dimension uses a secret algorithm to generate beautiful new colors.



4289152851



4292428630



4289161799



4283714637



4287889426



4279500803



# Inverse Universe

The Inverse Universe completely reimagines the original color for something new.



4289152851



4292428630



4282877095



4283714637



4287889426

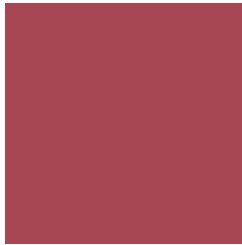


4279500803



# Previews

## White Background



This preview shows how the Android color 4289152851 looks on a white background.

## Color Contrast Check

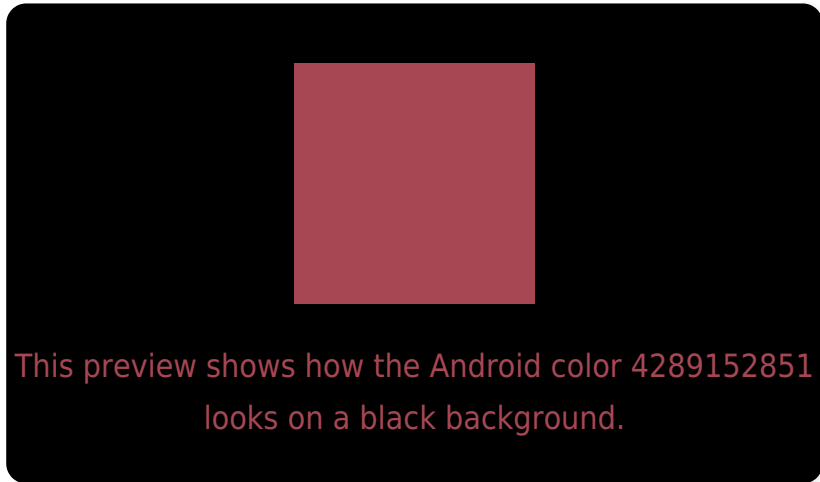
Large Text (above 18pt) WCAG AA ✓ Pass

Any Text WCAG AA ✓ Pass

Large Text (above 18pt) WCAG AAA ✓ Pass

Any Text WCAG AAA × Fail

# Black Background



## Color Contrast Check

Large Text (above 18pt) WCAG AA ✓ Pass

Any Text WCAG AA × Fail

Large Text (above 18pt) WCAG AAA × Fail

Any Text WCAG AAA × Fail

If you want to check with other color combinations, try the [Color Contrast Checker](#).



# Android 4289152851 Background



This preview shows how black text looks on a background with the Android color 4289152851.



This preview shows how white text looks on a background with the Android color 4289152851.

# Color Blindness Simulation

Color vision deficiency is a very complex topic, and I could not describe the different causes any better than Wikipedia does, so if you want to learn more, you should check out their [article about color blindness](#).

## Dichromacy



**Original Color**  
4289152851

**Protanopia**  
4285163107

**Deuteranopia**  
4286145359



# Trichromacy



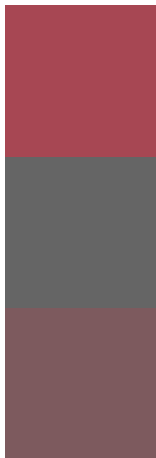
**Original Color**  
4289152851

**Protanomaly**  
4286602077

**Deuteranomaly**  
4287256912

**Tritanomaly**  
4289153103

# Monochromacy



**Original Color**  
4289152851

**Achromatopsia**  
4284835173

**Achromatomaly**  
4286405214

# CSS Examples

## Text

The CSS property to change the color of the text to Android 4289152851 is called "color". The color property can be set on classes, ids or directly on the HTML element.

This example shows how text in the color `rgb(167, 71, 83)` looks like.

```
.text, #text, p{  
    color:rgb(167, 71, 83)  
}
```

If you want to add a text shadow in that color use the text-shadow property, you can generate a text shadow directly with our [CSS Text Shadow Generator](#).

Here you see how black text with a 4 pixel rgb(167, 71, 83) colored shadow looks like.

```
.shadow{ text-shadow: 4px 4px 2px rgb(167, 71, 83) }
```

## Border

The CSS property to change the border of an element to Android 4289152851 is called "border". The border property can be set on classes, ids or directly on the HTML element.

This example shows the color as border, it can be applied via the CSS property "border" or "border-color".

```
.border, #border, table{ border:4px solid rgb(167, 71, 83) }
```

If only the border color should be changed use the property border-color.

```
.border{ border-color:rgb(167, 71, 83) }
```

If you want to add a box shadow in that color use:

Here you see how a box with a 4 pixel rgb(167, 71, 83) colored shadow looks like.

```
.boxshadow{ -moz-box-shadow:4px 4px 4px  
4px rgb(167, 71, 83); -webkit-box-  
shadow:4px 4px 4px 4px rgb(167, 71, 83);  
box-shadow:4px 4px 4px 4px rgb(167, 71,  
83) }
```

# Background

The CSS property to change the background color of an element to Android 4289152851 is called "background". The background property can be set on classes, ids or directly on the HTML element.

```
.background, #background, body{  
background: rgb(167, 71, 83) }
```

If only the background color should be changed can be used:

```
.background{ background-color: rgb(167, 71,  
83) }
```

This example shows the color as background, it is applied via the CSS property "background".

To optimize and compress your CSS code, you can use our [online CSS compressor and optimizer](#) based on csstidy. If you want to create a linear or radial gradient as background or border, check our [CSS Gradient Generator](#).



Hey! You found this booklet interesting? Support Converting Colors with the new Membership Option!

The pro membership hides all ads, plus gives you double the colors in the color bucket, and more awesome pro features!

**[Learn more, Memberships starting at \\$2.50/m!](#)**

**Follow me  
on Twitter!**

@ConvertingColor